



Free 8'x8' Office Shed Plan

Free vs. Premium Plan: What's the Difference?

We offer both free and premium versions of our detailed shed plans, designed to fit your needs and budget. Check out the table below to see the key differences and choose the plan that's right for you:

Features	Free Plan	Premium Plan
Steps Count	14	35
Illustrations per Step	Limited	Every Step
Print Ready Format	X	✓
Step-by-Step Instructions	Basic	Comprehensive
Full Materials & Cutting List	X	✓
Additional Illustrations	X	✓
Additional Blueprints	X	✓
Tools List	X	✓
Fastening Elements List	X	✓
Technical Support	X	✓

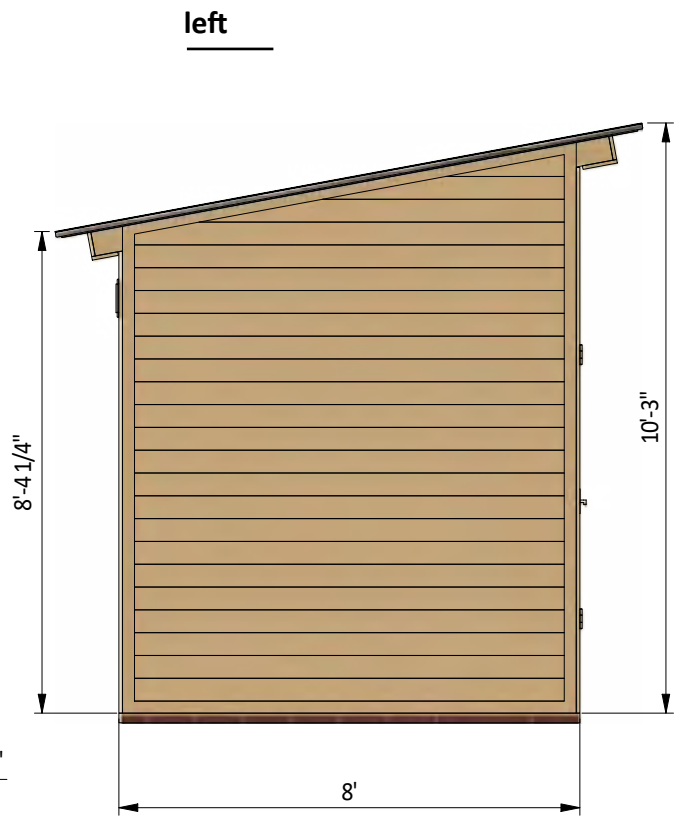
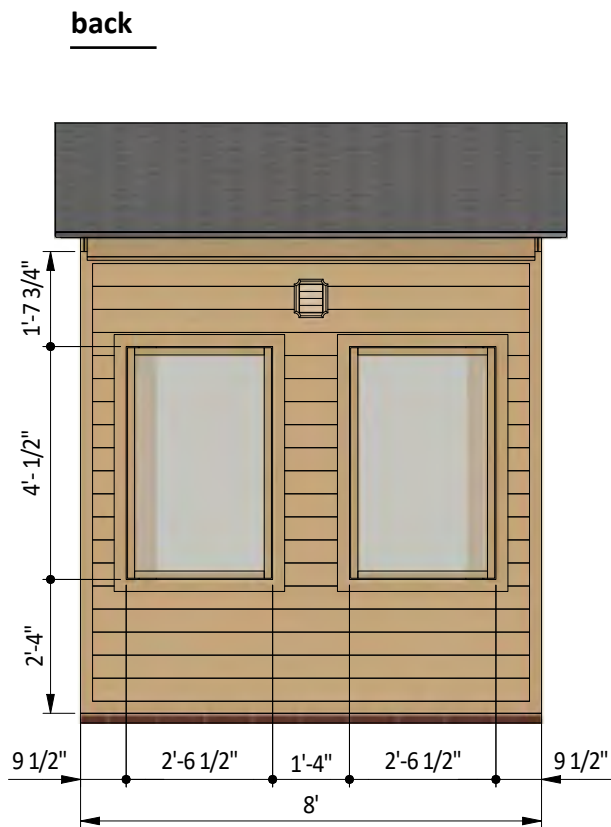
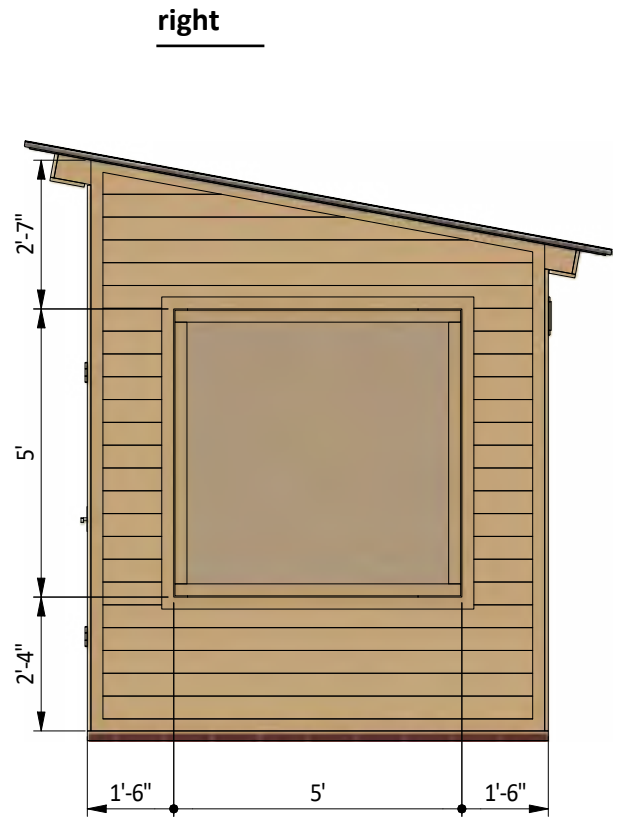
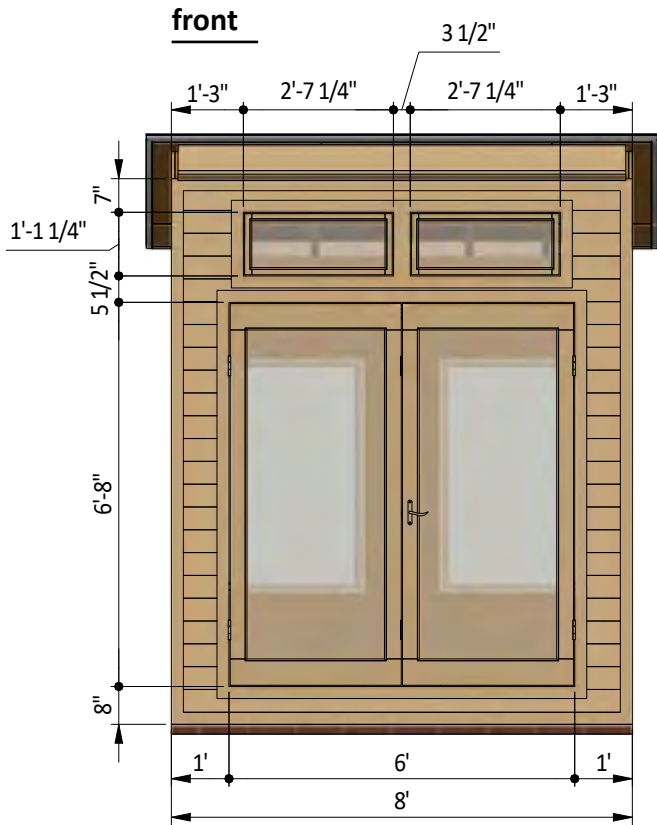
[Try Premium Risk-Free](#)

60-day refund policy with no questions asked.

8'x8' office shed shopping list

Material	Unit	Qty	Size
Pressure-Treated Lumber (1 x 3)	pcs	22	8'
Pressure-Treated Lumber (1 x 3)	pcs	8	10'
Pressure-Treated Lumber (1 x 4)	pcs	1	6'
Pressure-Treated Lumber (1 x 6)	pcs	3	8'
Pressure-Treated Lumber (1 x 8)	pcs	1	8'
Pressure-Treated Lumber (2 x 2)	pcs	6	8'
Pressure-Treated Lumber (2 x 3)	pcs	4	6'
Pressure-Treated Lumber (2 x 4)	pcs	6	6'
Pressure-Treated Lumber (2 x 4)	pcs	38	8'
Pressure-Treated Lumber (2 x 4)	pcs	2	10'
Pressure-Treated Lumber (2 x 6)	pcs	9	8'
Pressure-Treated Lumber (2 x 6)	pcs	7	10'
Pressure-Treated Lumber (2 x 8)	pcs	9	8'
Pressure-Treated Lumber (4 x 4)	pcs	2	8'
Pressure-Treated Lumber (4 x 4)	pcs	2	10'

Size & Dimensions

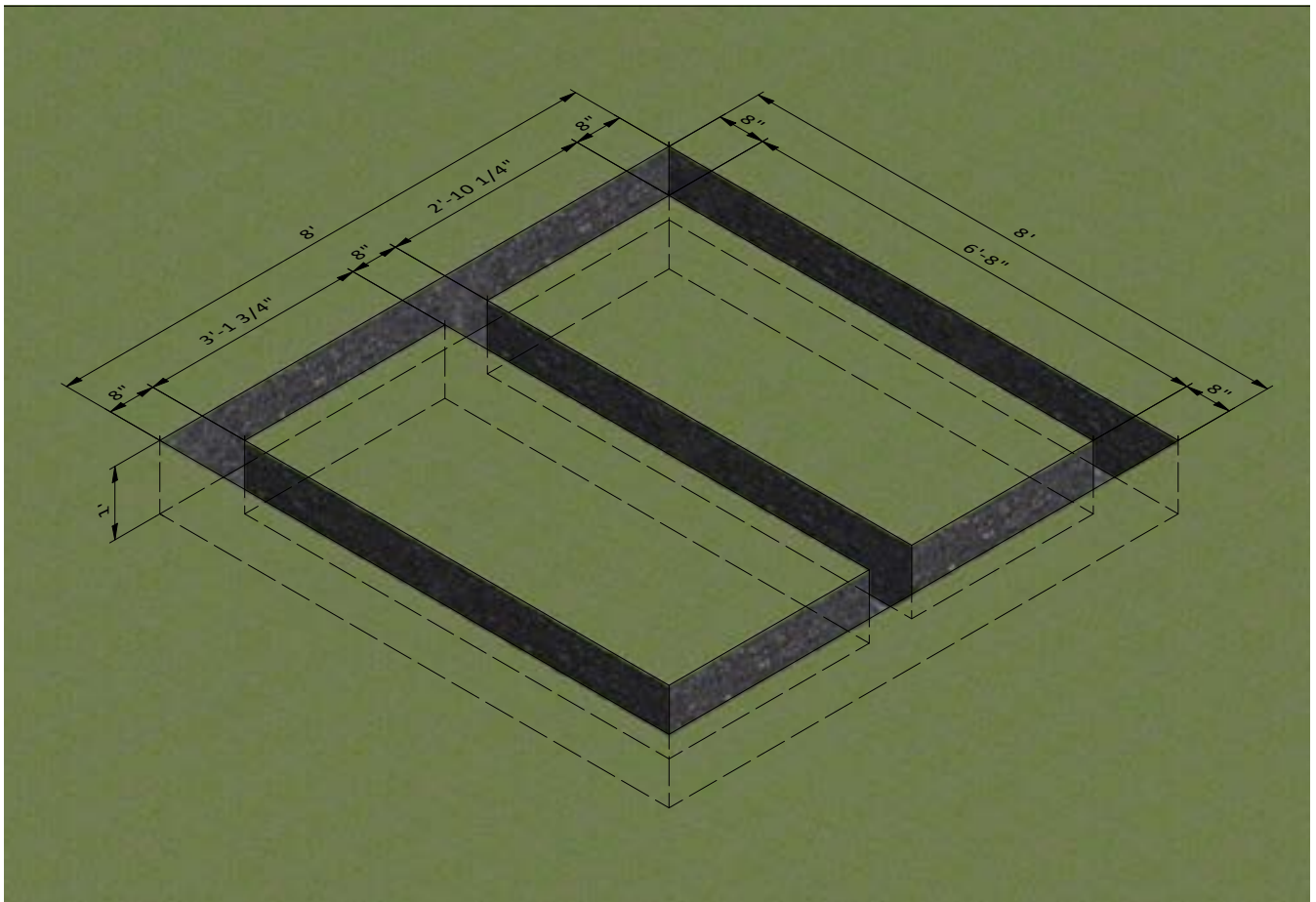


STEP 1

Ground Works

1.1 Clear the area where you want to build the shed and layout for the foundation. Use the below illustration as a guide.

1.2 For the foundation, dig the trenches at least 1' wide and 1' deep.

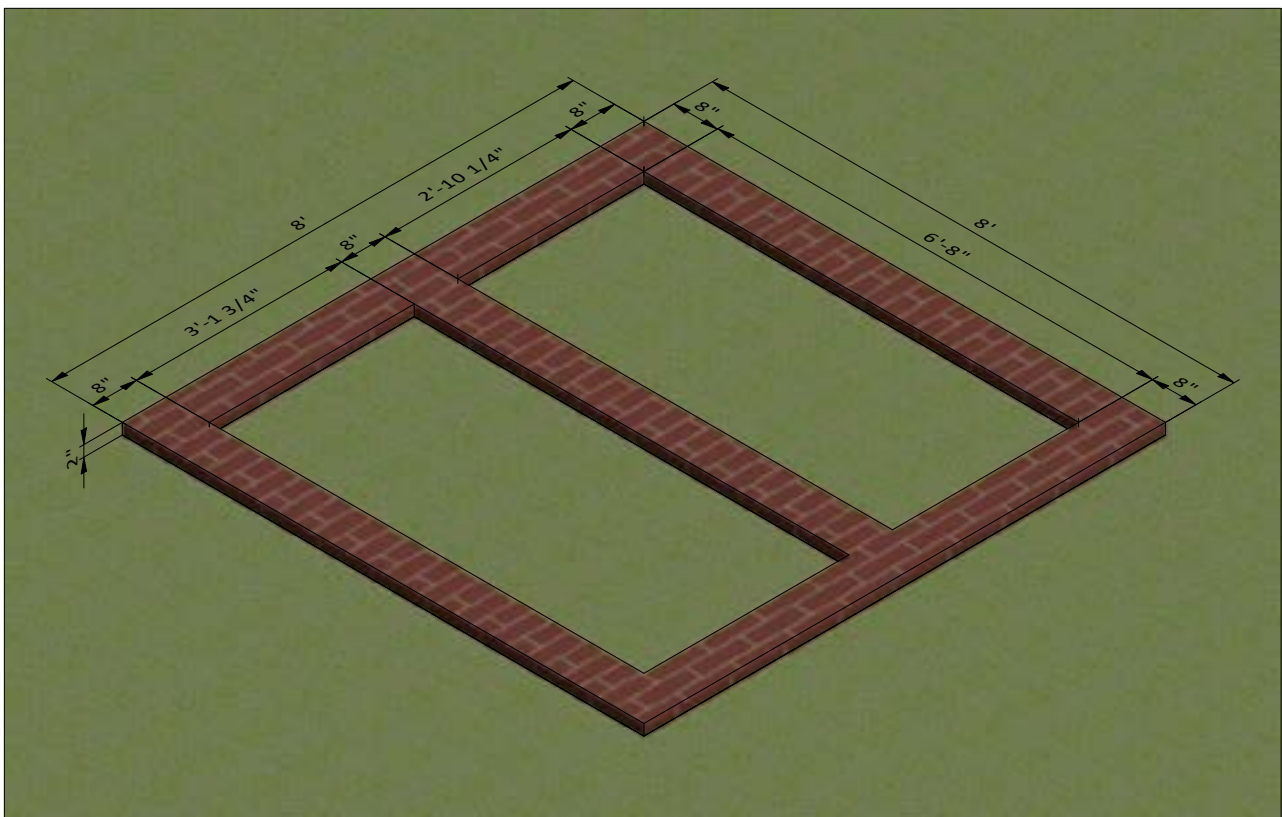
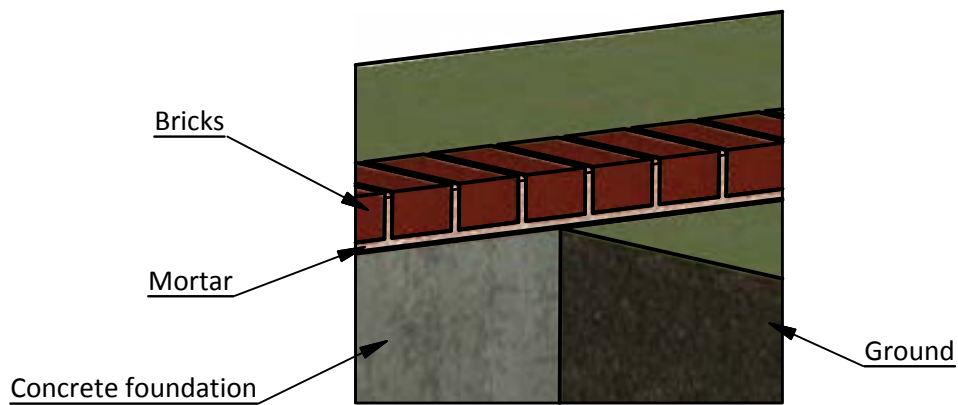


STEP 2

Foundation Preparation

2.1 Fill the trenches to ground level with concrete and let cure, or harden. Since curing times vary between brands, read the packaging for recommended curing times.

2.2 Once the concrete has cured, use standard-sized bricks and lay them across the foundation. You will need roughly 100 bricks for this step.



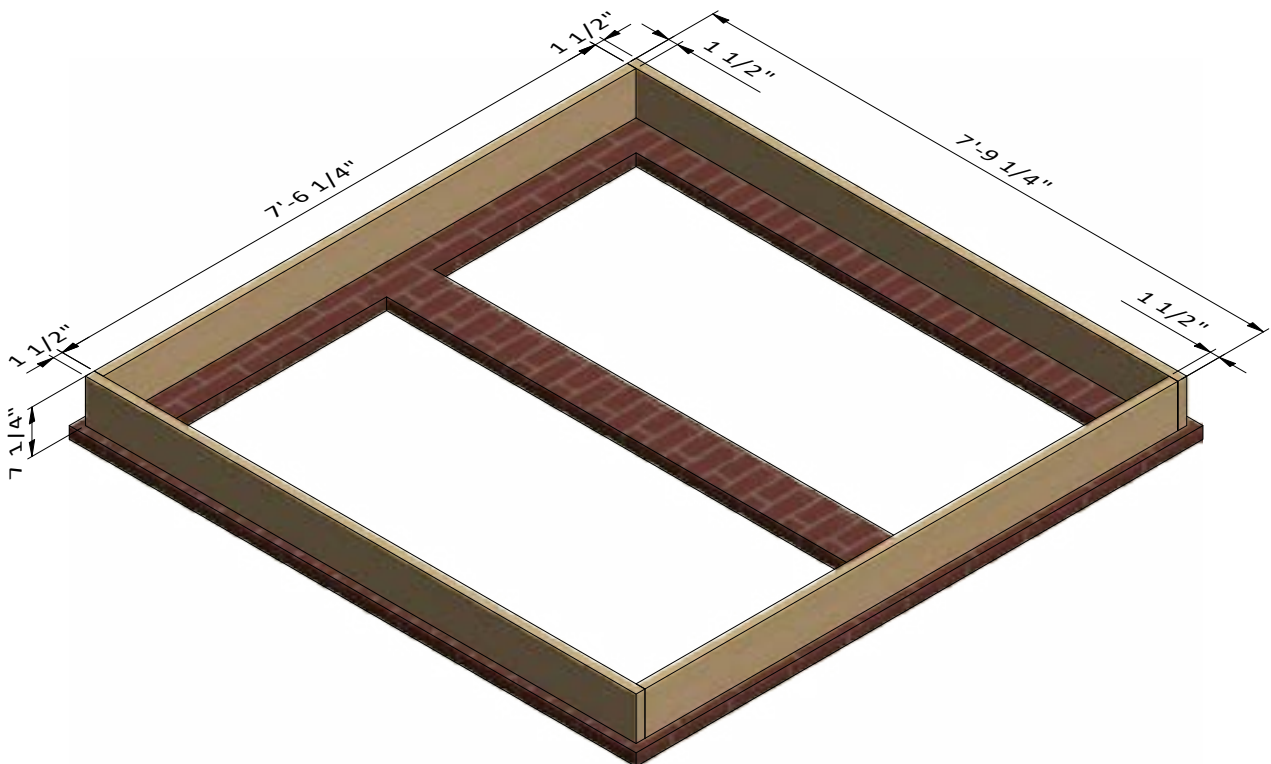
STEP 3

Framing the Floor

3.1 Assemble the frame using 1 1/2" x 7 1/4" pressure-treated lumber. You will need two boards cut to 7'-9 1/4" that will be the rim joist and two boards cut to 7'-6 1/4" that will be the joist.

3.2 Secure the beams with 8x5" wood screws.

3.3 Using a speed square or carpenter's square, check the corners to make sure they are 90°.



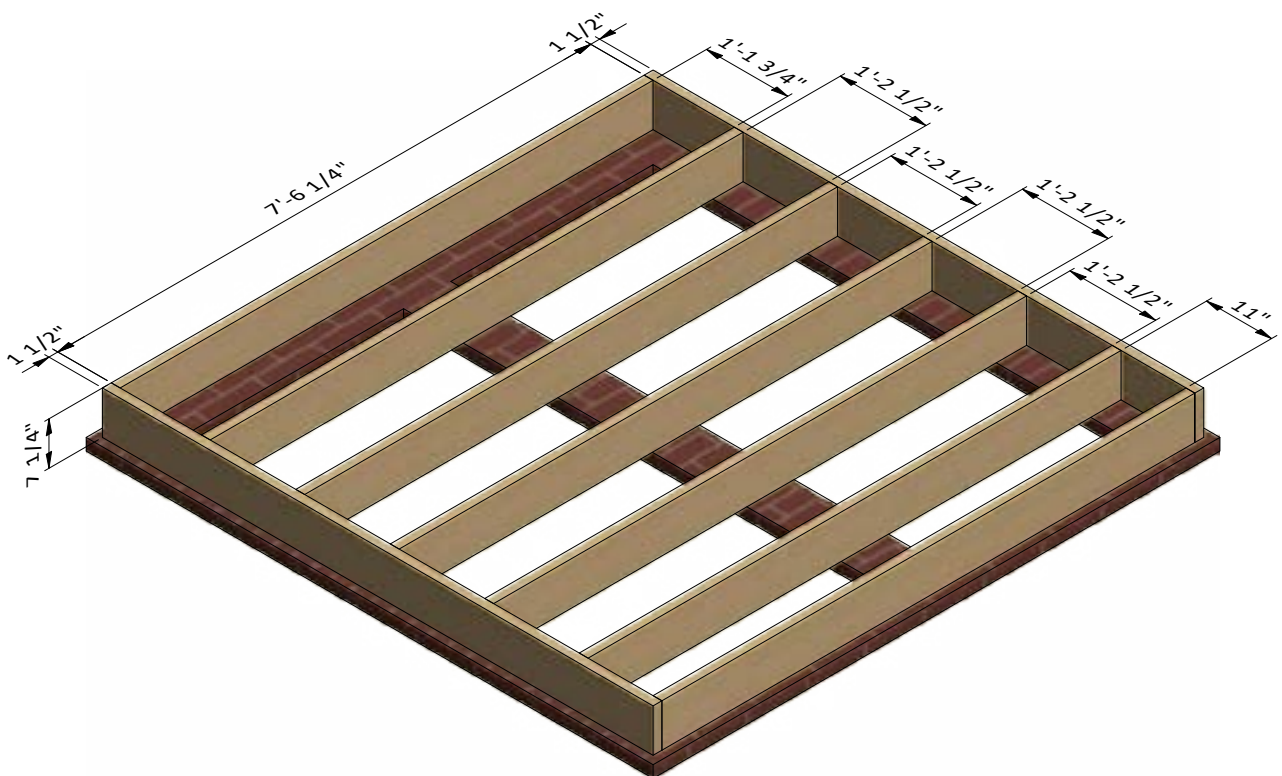
STEP 4

Framing the Floor

4.1 Assemble the frame using 1 1/2" x 7 1/4" pressure-treated lumber. You will need five boards cut to 7'-6 1/4" that will be the joist.

4.2 Secure the beams with 8x5" wood screws.

4.3 Using a speed square or carpenter's square, check the corners to make sure they are 90°.



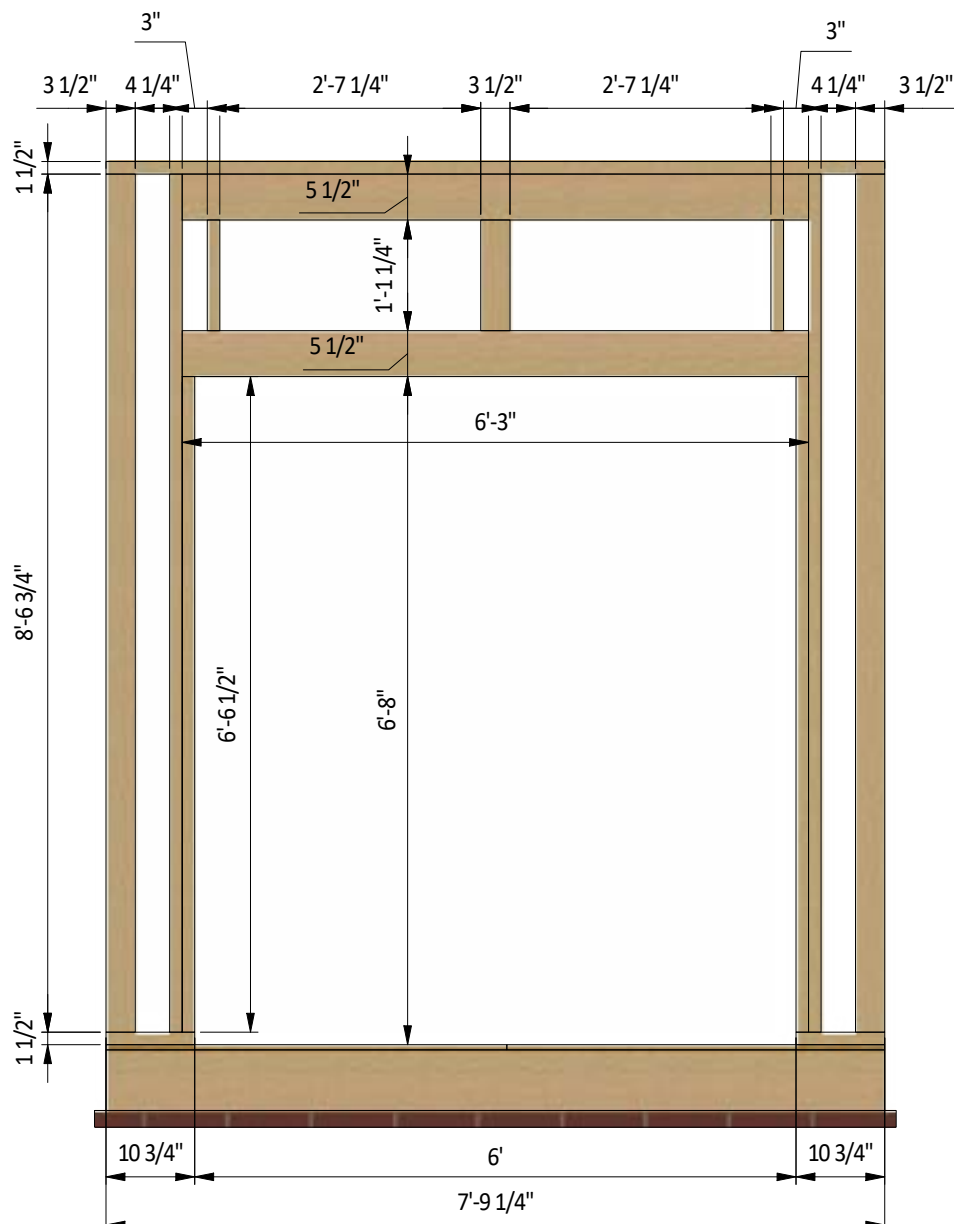
STEP 5

Assemble Front Wall Frame

5.1 Using 1 1/2" x 3 1/2", 1 1/2" x 5 1/2" and 3 1/2" x 3 1/2" pressure-treated lumber, construct front wall frame using the drawing below as a reference. You will need four boards cut to 8'-6 3/4" and two boards cut to 6'-6 1/2" that will be studs, two boards cut to 10 3/4" that will be the bottom beams, one board cut to 7'-9 1/4" that will be the top beam, four boards cut to 6'-3" and two sheets of 5/8" plywood cut to 5 1/2" x 6'-3" that will be the door and window headers and three boards cut to 1'-1 1/4" that will be cripple studs.

5.2 Connect the beams with 2x3" wood screws.

5.3 Using a speed square or carpenter's square, check the corners to make sure they are 90°.



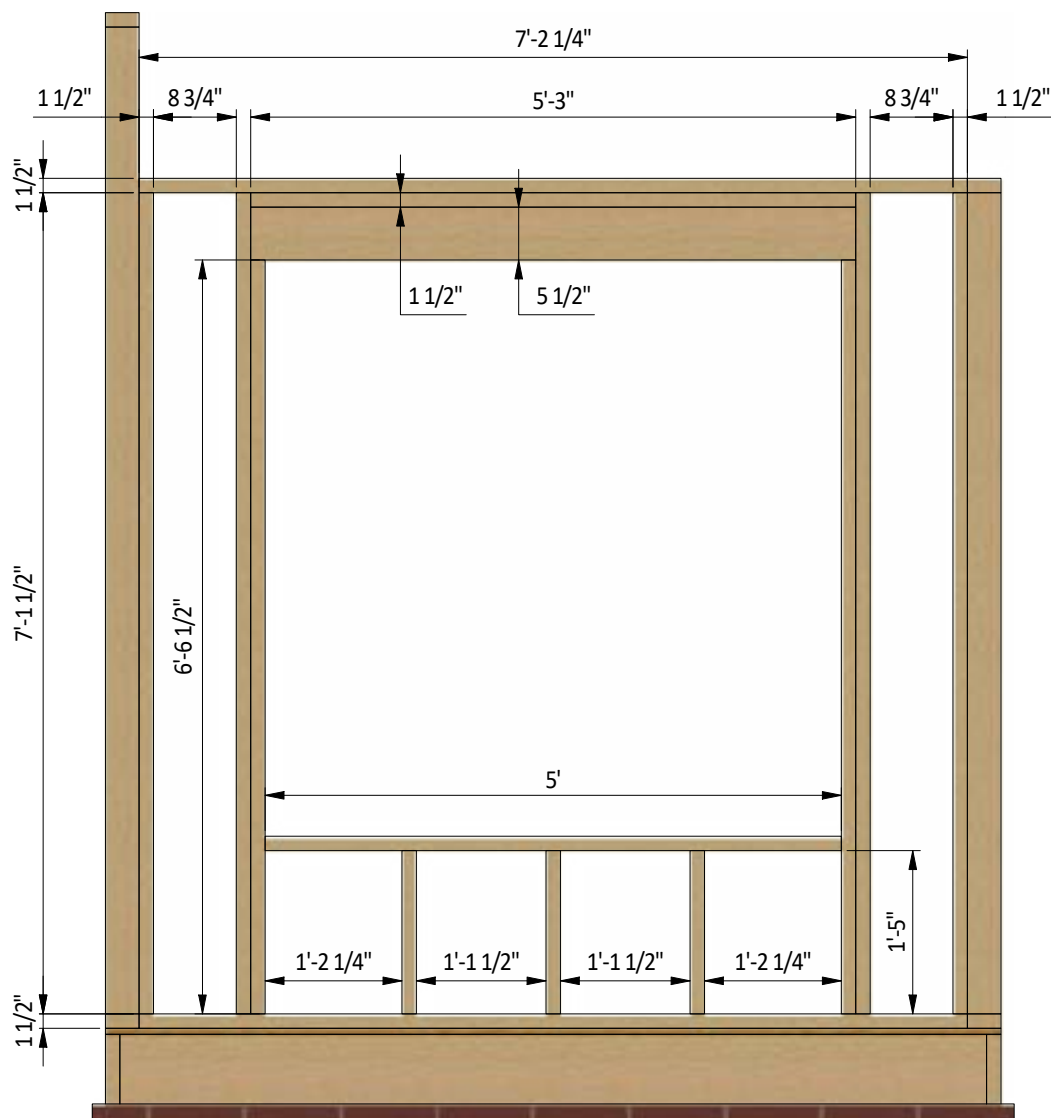
STEP 7

Assemble Right Wall Frame

7.1 Using 1 1/2" x 3 1/2" and 1 1/2" x 5 1/2" pressure-treated lumber, construct right wall frame using the drawing below as a reference. You will need four boards cut to 7'-1 1/2", two boards cut to 6'-6 1/2" and three boards cut to 1'-5" that will be the studs, three boards cut to 5'-3" and one sheet of 5/8" plywood cut to 5 1/2" x 5'-3" that will be the window header, one board cut to 5' that will be rough sill, and two boards cut to 7'-2 1/4" that will be the top and bottom plates.

7.2 Connect the beams with 2x3" wood screws.

7.3 Using a speed square or carpenter's square, check the corners to make sure they are 90°.



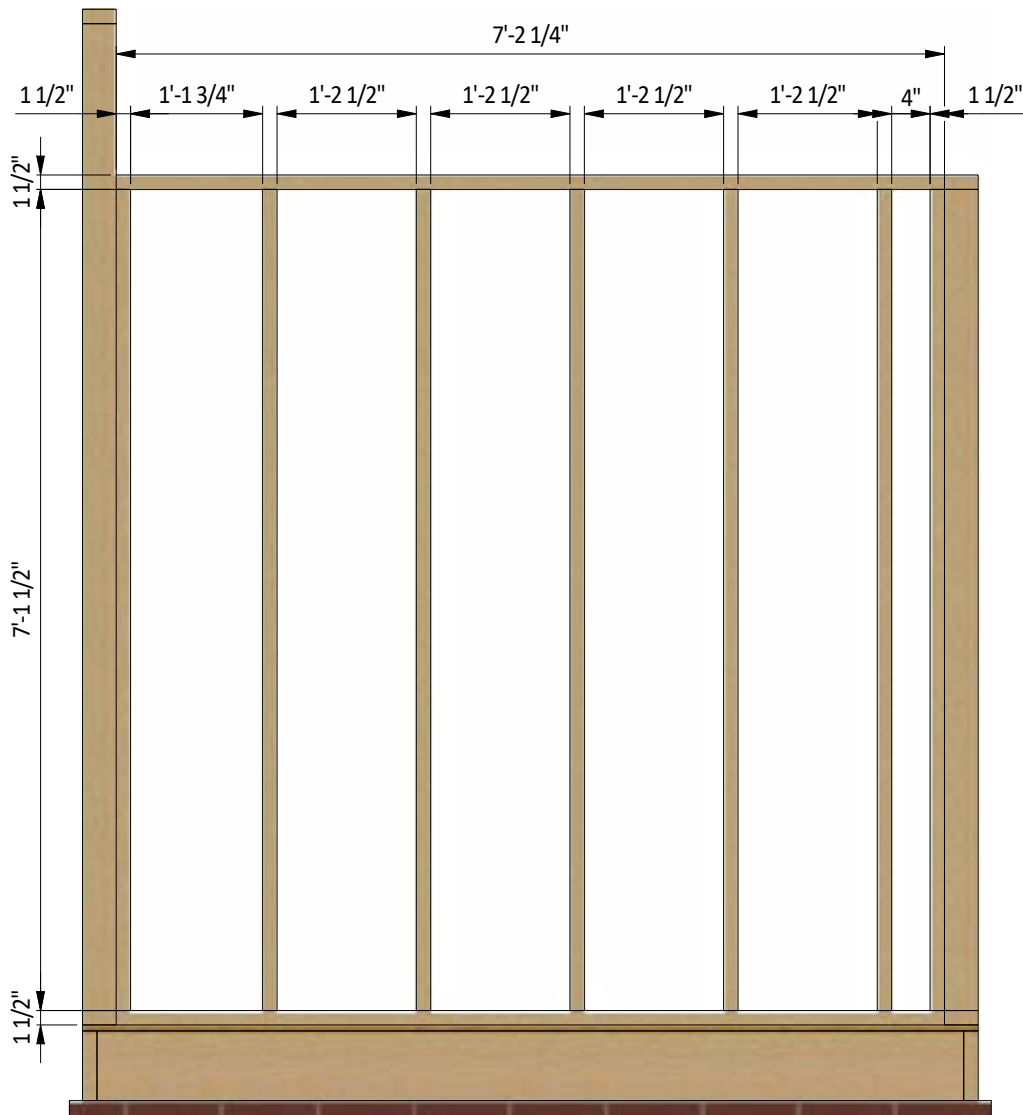
STEP 8

Assemble Left Wall Frame

8.1 Using 1 1/2" x 3 1/2" pressure-treated lumber, construct left wall frame using the drawing below as a reference. You will need seven boards cut to 7'-1 1/2" that will be the studs and two boards cut to 7'-2 1/4" that will be the top and bottom plates.

8.2 Connect the beams with 2x3" wood screws.

8.3 Using a speed square or carpenter's square, check the corners to make sure they are 90°.



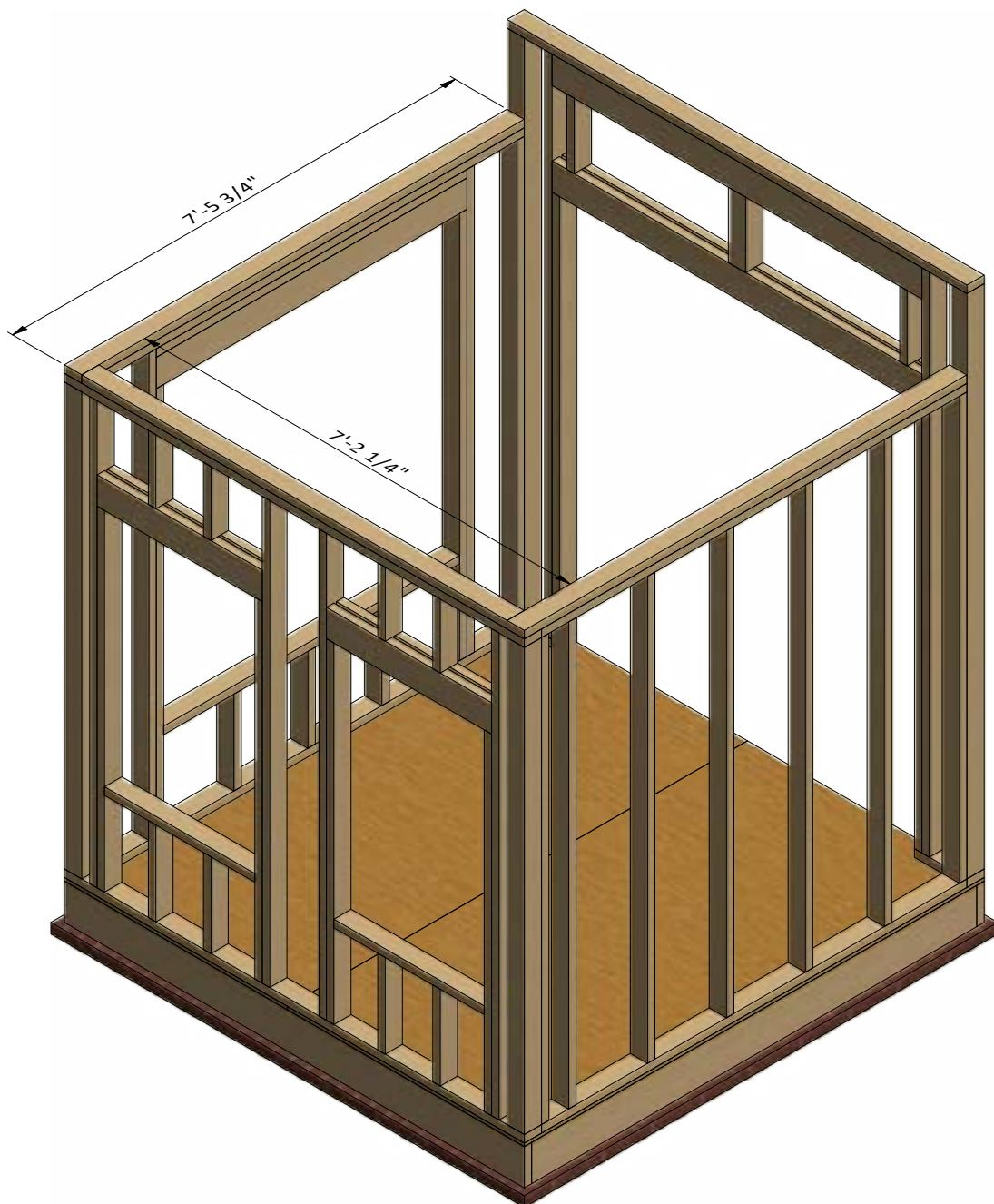
STEP 9

Assemble the Top Beams

9.1 Assemble the beams using 1 1/2" x 3 1/2" pressure-treated lumber. You will need one board cut to 7'-2 1/4" and two boards cut to 7'-5 3/4".

9.2 Connect the beams with 3" wood screws.

9.3 Using a speed square or carpenter's square, check the corners to make sure they are 90°.

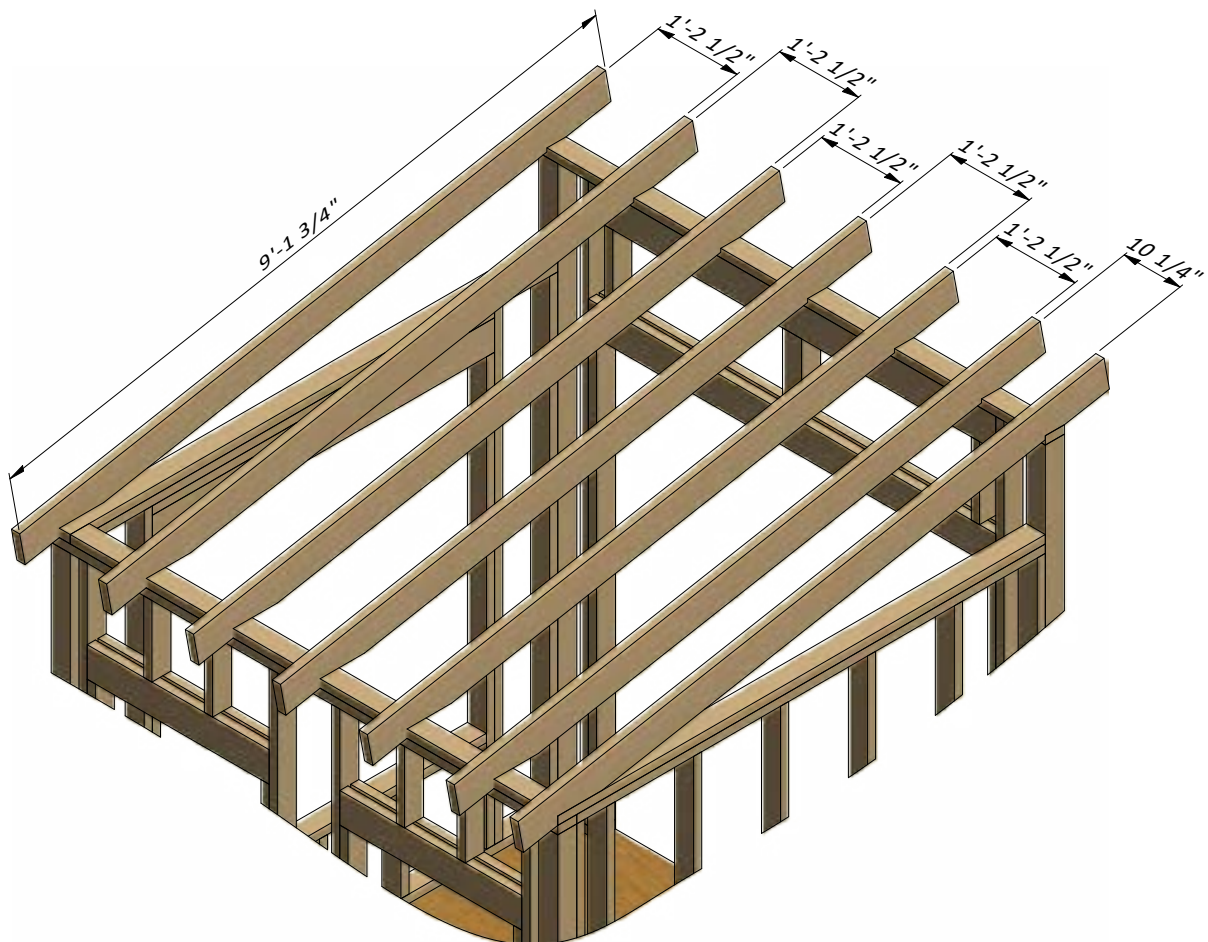
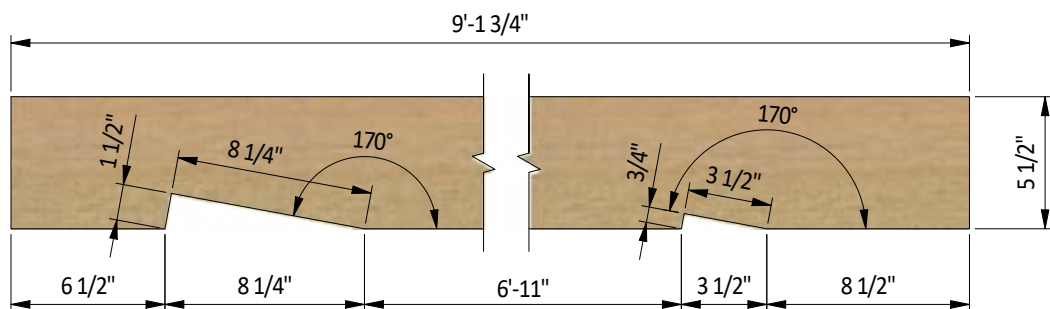


STEP 10

Assemble the Roof Frame

10.1 Using 1 1/2" x 5 1/2" pressure-treated lumber, cut seven rafters 9'-1 3/4" long according to the dimensions in drawing below. Cut the recesses in each beam for splicing connection with wall frames.

10.2 Connect the beams with a top frame with the help of 5" wood screws.



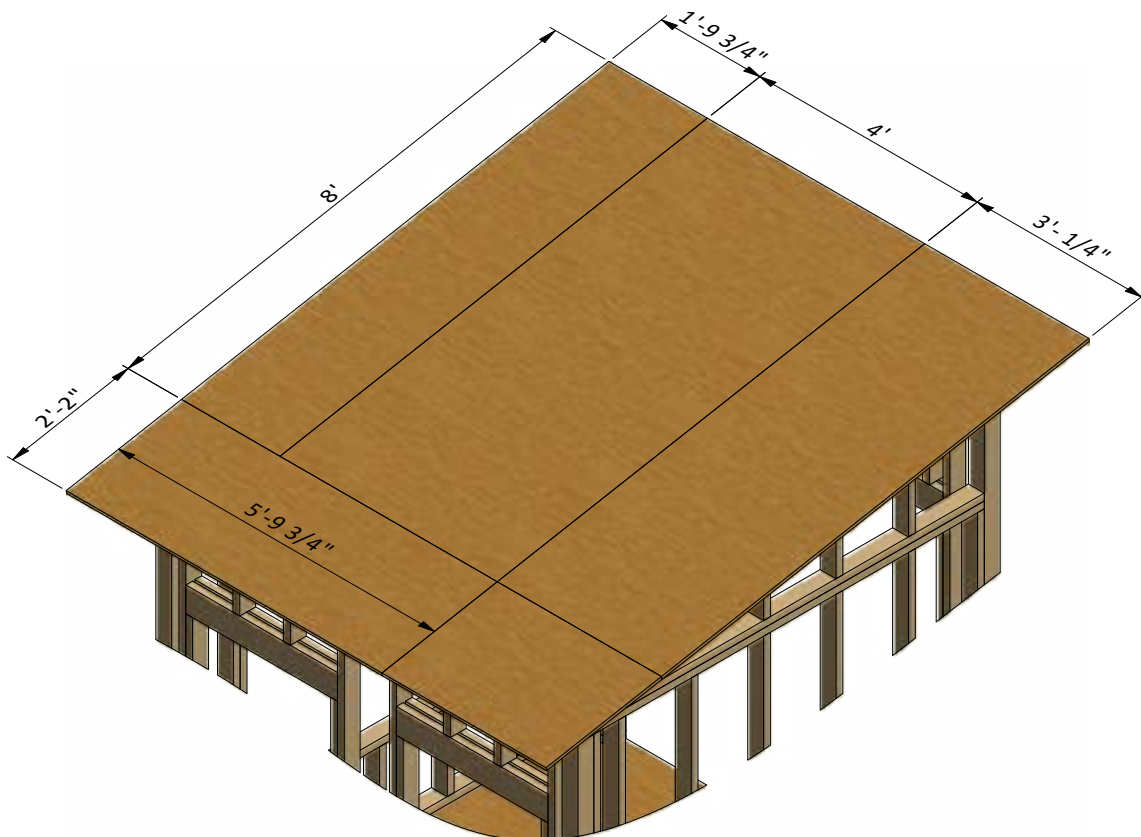
STEP 11

Install Plywood for the Roof

11.1 Cut sheets of 5/8" plywood for the roof sheathing using the drawing below as a guide.

You will need one 1'-9 3/4" x 8' sheet, one 4' x 8' sheet, one 3'-1/4" x 8', one 2'-2" x 5'-9 3/4" sheet and one 3'-1/4" x 2'-2" sheet.

11.2 Secure the plywood with 2" wood screws.



STEP 12

Assemble and Install Shed Doors

12.1 Using 1 1/2" x 3 1/2"" and 1 1/2" x 5 1/2" pressure-treated lumber, assemble the frame for the door as shown in the drawings below. You will need two boards cut to 6'-7 1/2" that will be the vertical girts and two boards cut to 2'-11 3/4" that will be the horizontal girts. Cut the recesses for splicing connection.

12.2 Connect the beams with 1" wood screws.

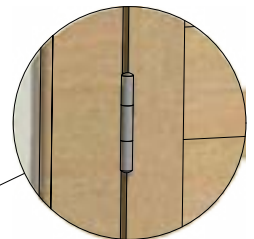
12.3 Cut the recesses for the 4" x 1" hinges.

12.4 Mill the recess for the locking clamp and for the lock with handles in vertical girt and recess according to the door lock set documentation that you have buy.

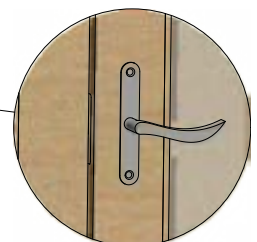
12.5 Install two hinges (4") with 1" wood screws and assemble the doors. Install door lock set.

12.6 Prepare and install glass and fasten it by window beading from four sides. Use 1/2" galvanized nails.

H (1:8)



J (1:8)



STEP 13

Window Installation for the Right Wall

13.1 Using 1 1/2" x 2 1/2" pressure-treated lumber, assemble the outer frame for the window as shown in the drawing below. You will need two boards cut to 4'-11 1/2" that will be the vertical girts and two boards cut to 4'-11 1/2" that will be the horizontal girts. Cut the recesses in each beam for splicing connection and mill a recess for the glass.

13.2 Prepare and install glass into inner frame groove and fasten it by window beading from four sides. Use 1/2" galvanized nails.

13.3 Insert window into side wall openings and connect them with 8x2" wood screws to the wall beams.



STEP 14

Final Touches

Now that your shed is all done, you are ready to decorate it any way you want using your favorite paint, stain, or preservative.



Free vs. Premium Plan: What's the Difference?

We offer both free and premium versions of our detailed shed plans, designed to fit your needs and budget. Check out the table below to see the key differences and choose the plan that's right for you:

Features	Free Plan	Premium Plan
Steps Count	14	35
Illustrations per Step	Limited	Every Step
Print Ready Format	X	✓
Step-by-Step Instructions	Basic	Comprehensive
Full Materials & Cutting List	X	✓
Additional Illustrations	X	✓
Additional Blueprints	X	✓
Tools List	X	✓
Fastening Elements List	X	✓
Technical Support	X	✓

[Try Premium Risk-Free](#)

60-day refund policy with no questions asked.



For more great **HOW-TO** plans please visit: <https://craft.camp>

Copyright

The text and illustrations that appear here are the exclusive property of craft.camp and are protected by federal copyright laws. The duplication, sale or distribution of any portion of these plans without prior written consent from the original designer will be subject to the appropriate penalties for copyright infringement. Sharing this plan on the web is only permitted with an indicated original source: <https://craft.camp>