



Free 8' x 7' Entertainment Shed Plan

Free vs. Premium Plan: What's the Difference?

We offer both free and premium versions of our detailed shed plans, designed to fit your needs and budget. Check out the table below to see the key differences and choose the plan that's right for you:

Features	Free Plan	Premium Plan
Metric measurements	X	✓
Illustrations per Step	Limited	Every Step
Print Ready Format	X	✓
Step-by-Step Instructions	Basic	Comprehensive
Full Materials & Cutting List	X	✓
Additional Illustrations	X	✓
Additional Blueprints	X	✓
Tools List	X	✓
Fastening Elements List	X	✓
Technical Support	X	✓

[Try Premium Risk-Free](#)

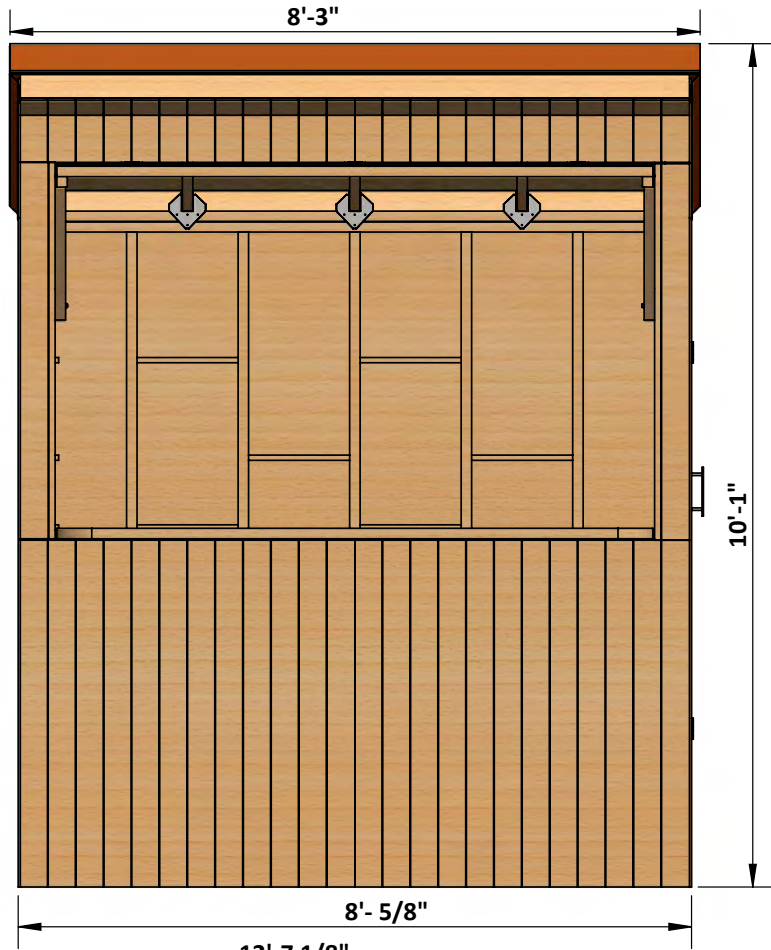
30-day refund policy with no questions asked.

8' x 7' Shed Shopping List

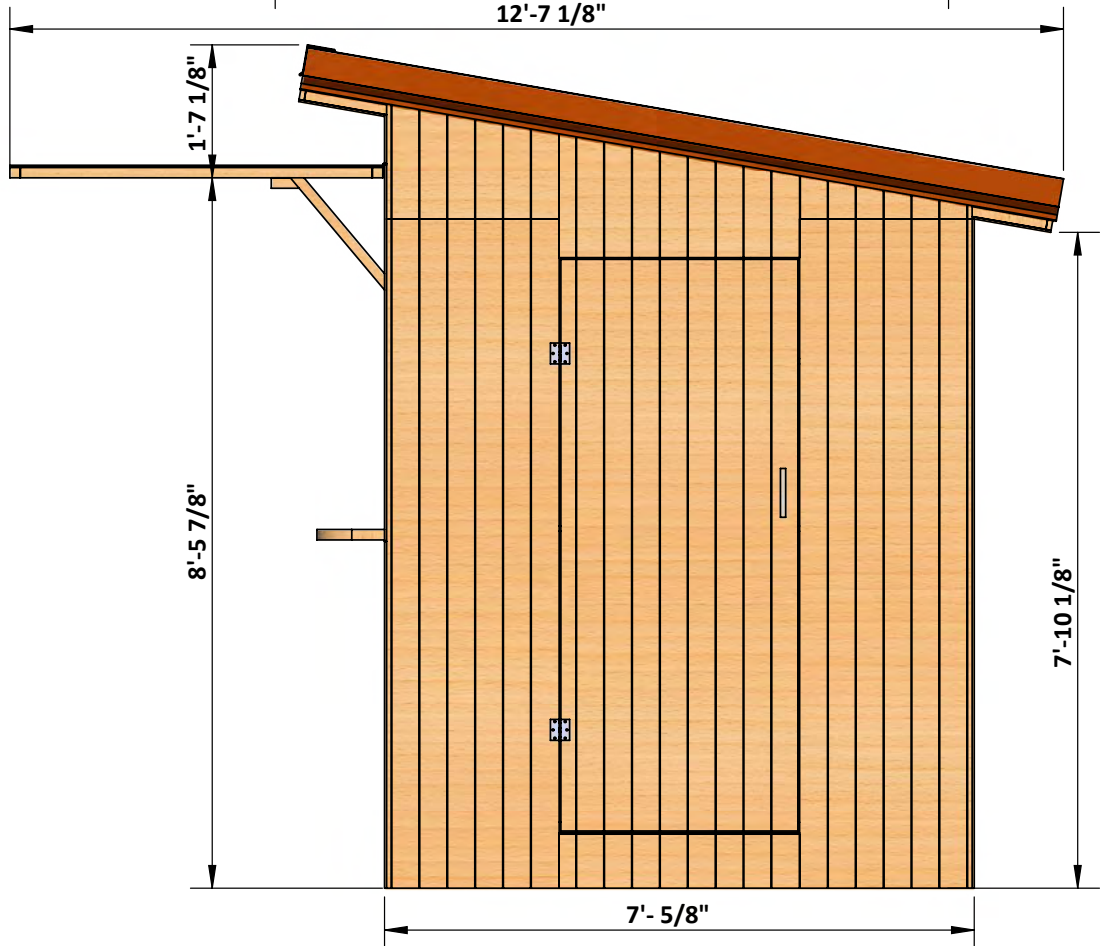
Materials	Unit	Qty	Size
Lumber (4 x 4)	Pcs	2	10'
Lumber (4 x 4)	Pcs	2	8'
Lumber (2 x 8)	Pcs	9	8'
Lumber (2 x 6)	Pcs	5	10'
Lumber (2 x 6)	Pcs	2	8'
Lumber (2 x 4)	Pcs	40	8'
Lumber (2 x 2)	Pcs	3	8'
Lumber (2 x 2)	Pcs	8	6'
Lumber (1 x 6)	Pcs	3	8'
Lumber (1 x 6)	Pcs	2	6'
Butcher block 1 1/2	Pcs	1	8' x 2'-1"
Plywood 3/4	Pcs	3	8' x 4'
OSB 1/2	Pcs	3	8' x 4'

Size & Dimensions

Front

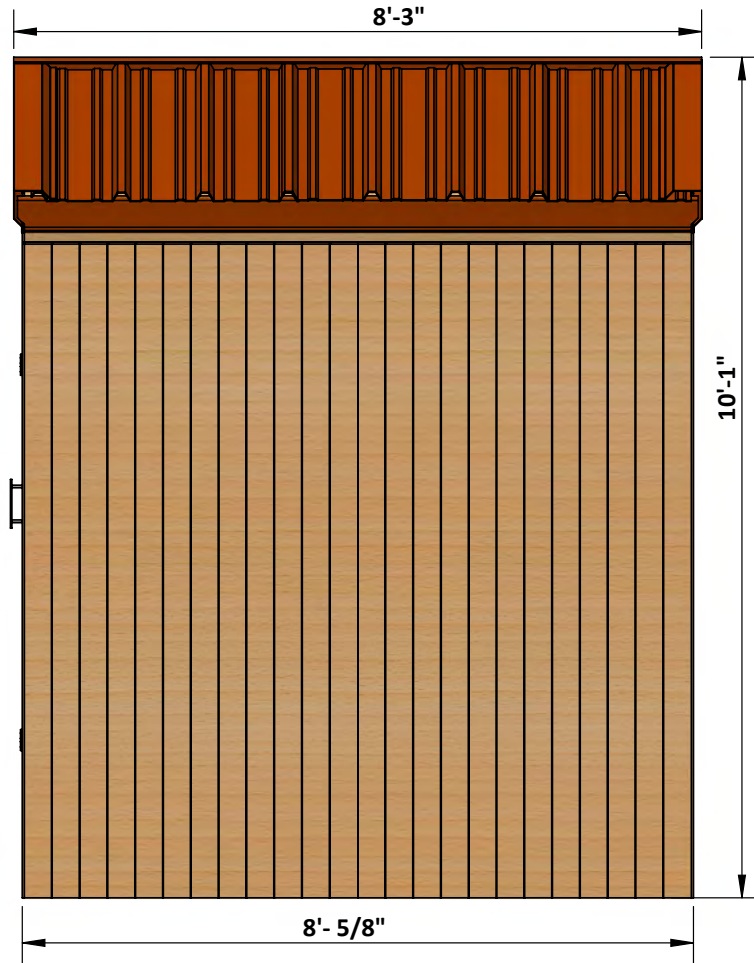


Right

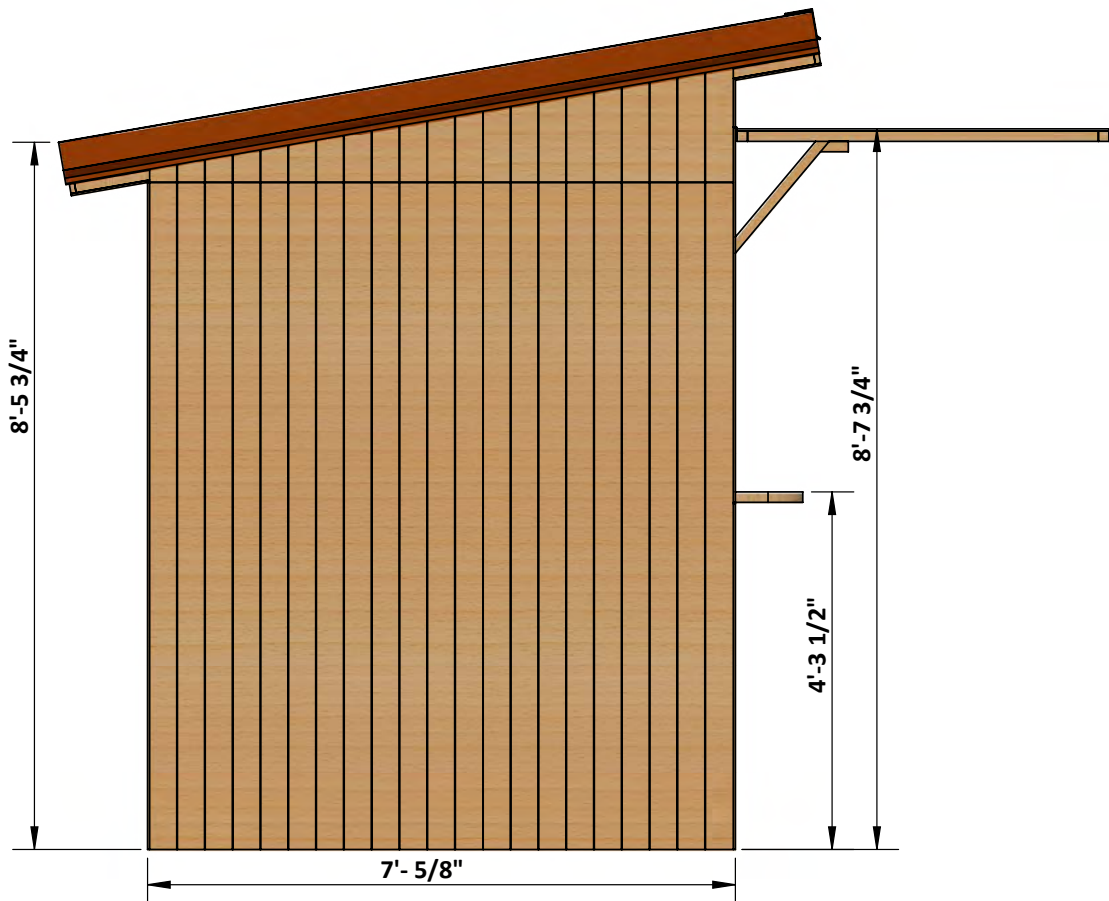


Size & Dimensions

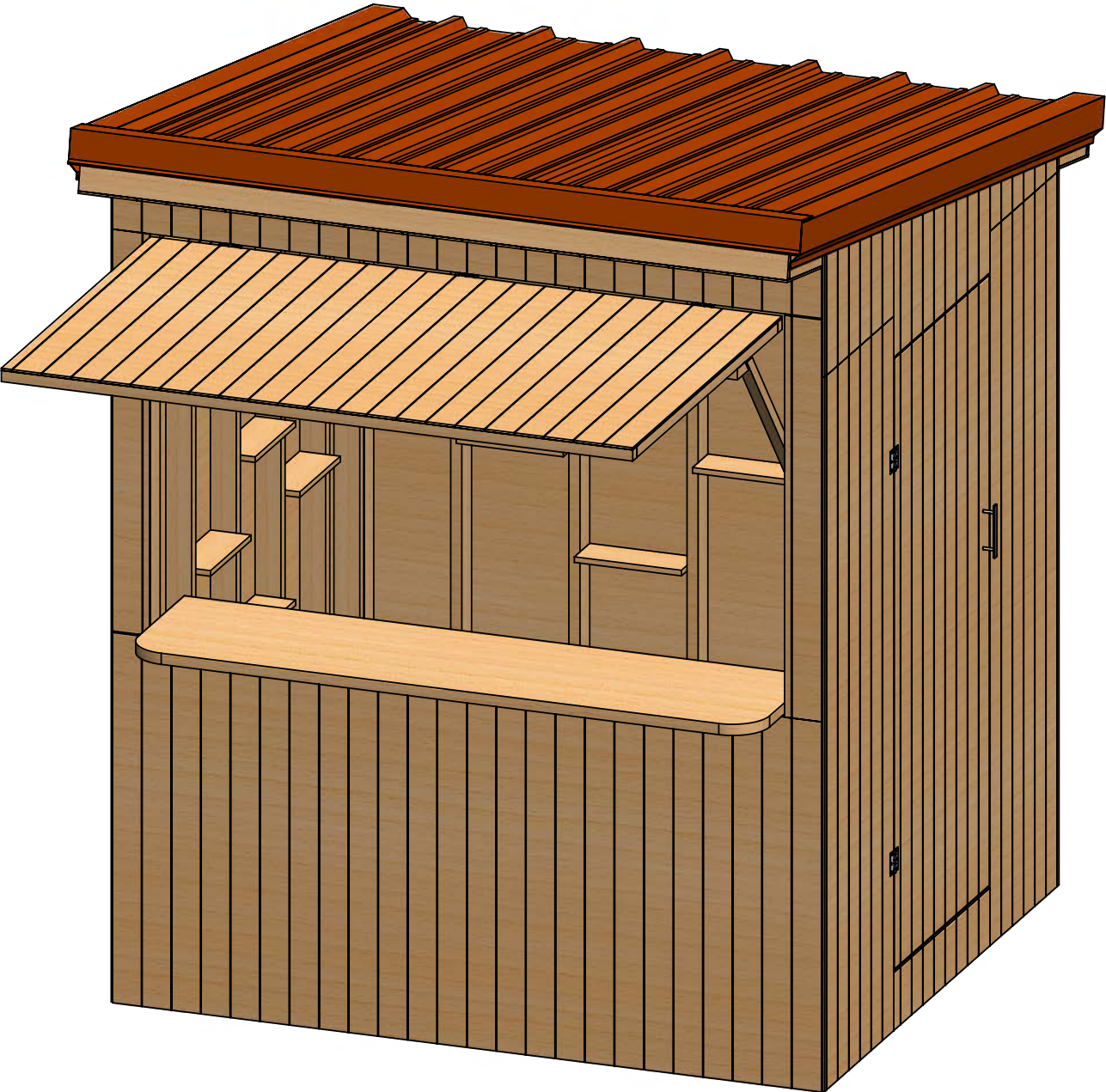
Rear



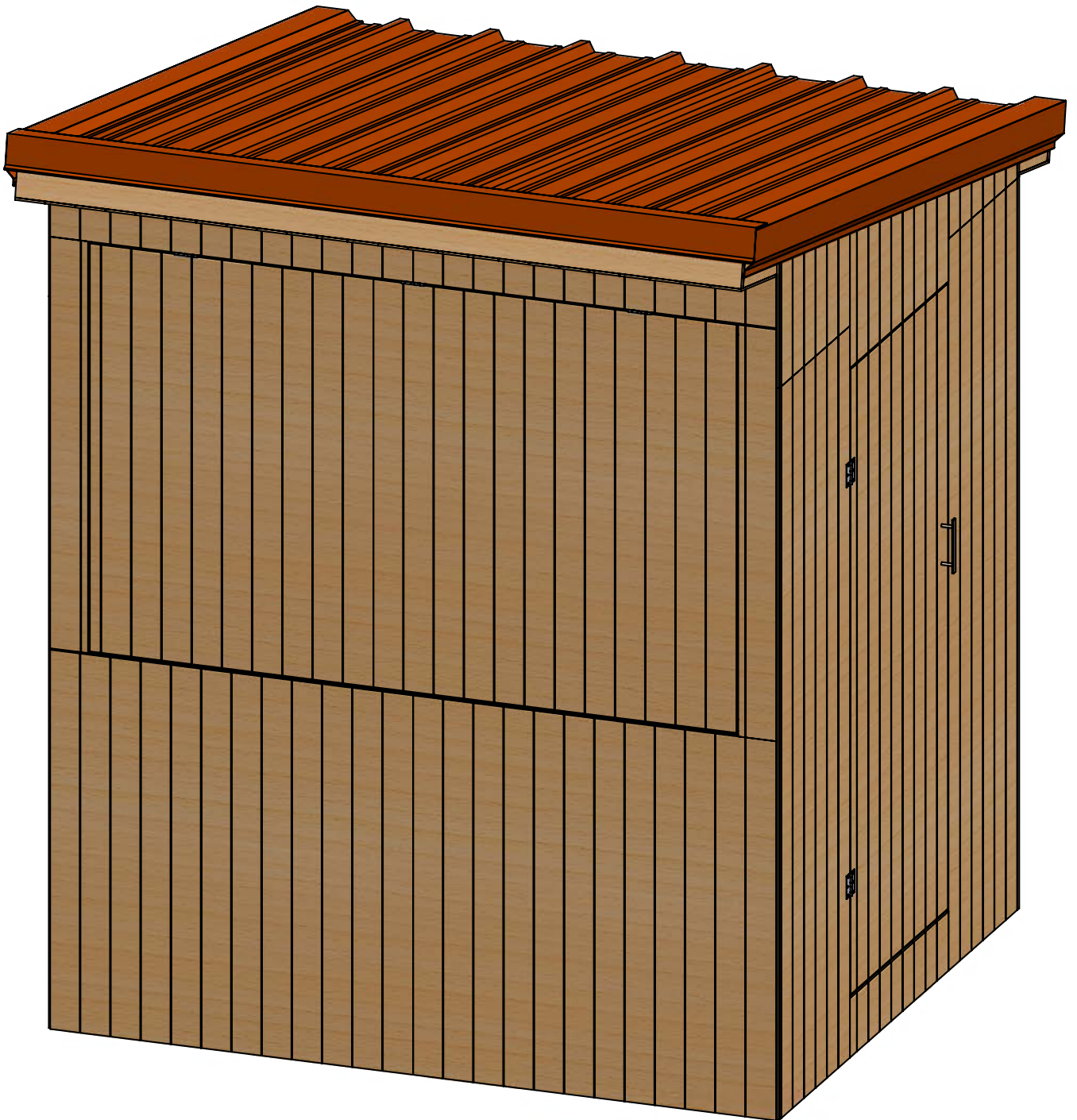
Left



Model View



Model View Folded Position



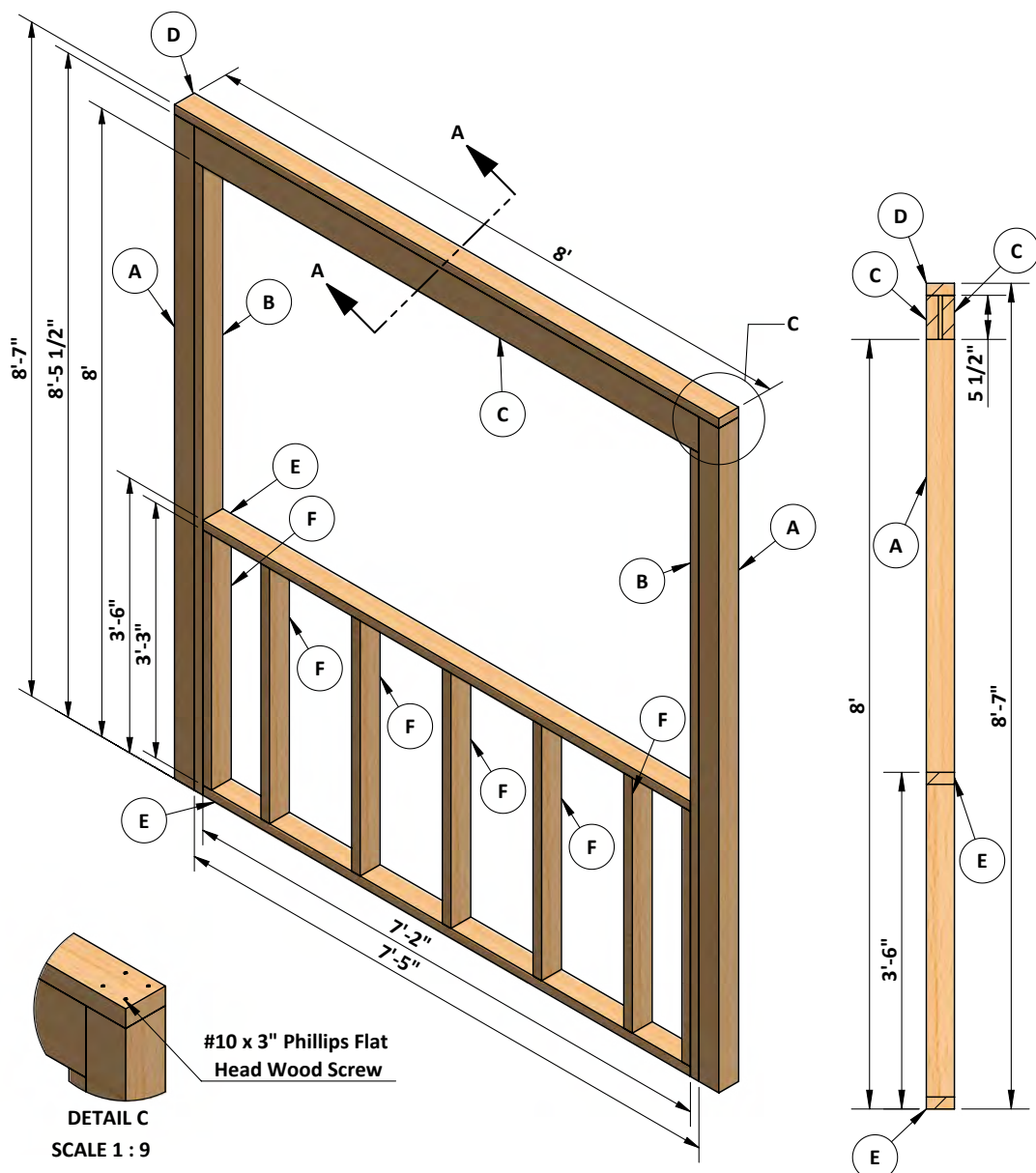
STEP 1

Shed Front Wall Frame Assembly

1.1 Assemble front wall frame using 2 x 4 , 2 x 6 and 4 x 4 lumbers according to the illustration below.

1.2 Secure the frame with #10 x 3" phillips flat head wood screws and the window header with #10 x 5" phillips flat head wood screws.

Pos	Description	Material	Dimension	Qty
A	Studs	Lumber (4 x 4)	8'-5 1/2"	2
B	Studs	Lumber (2 x 4)	8'	2
C	Window header	Lumber (2 x 6)	7'-5"	2
D	Top beam	Lumber (2 x 4)	8'	1
E	Top/bottom beam	Lumber (2 x 4)	7'-2"	2
F	Studs	Lumber (2 x 4)	3'-3"	7



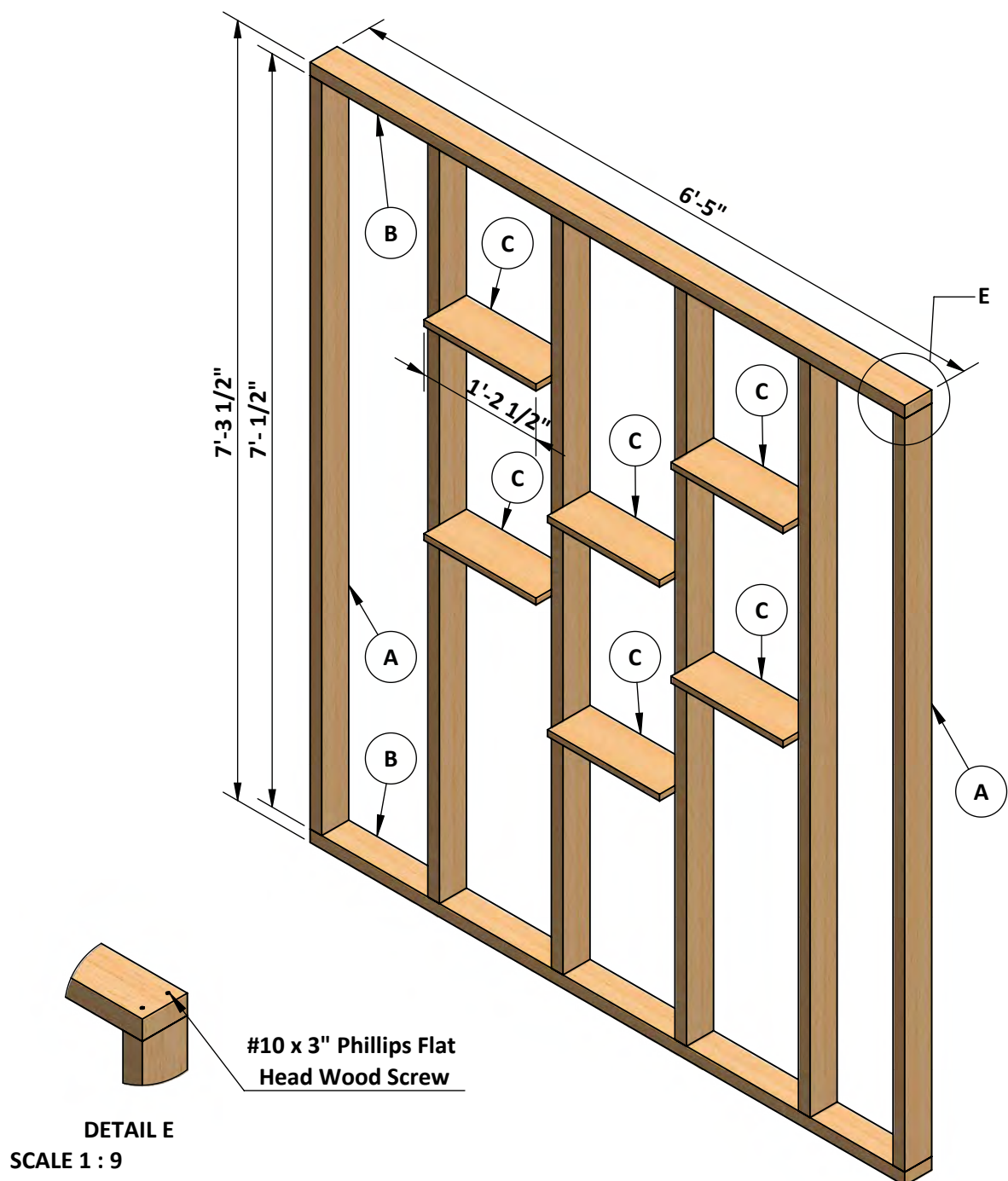
STEP 2

Shed Left Wall Frame Assembly

2.1 Assemble the left wall frame using 1 x 6 and 2 x 4 lumbers according to the illustration below.

2.2 Secure all the lumbers with #10 x 3" phillips flat head wood screws.

Pos	Description	Material	Dimension	Qty
A	Studs	Lumber (2 x 4)	7'-1/2"	6
B	Top/bottom beam	Lumber (2 x 4)	6'-5"	2
C	Shelves	Lumber (1 x 6)	1'-2 1/2"	6



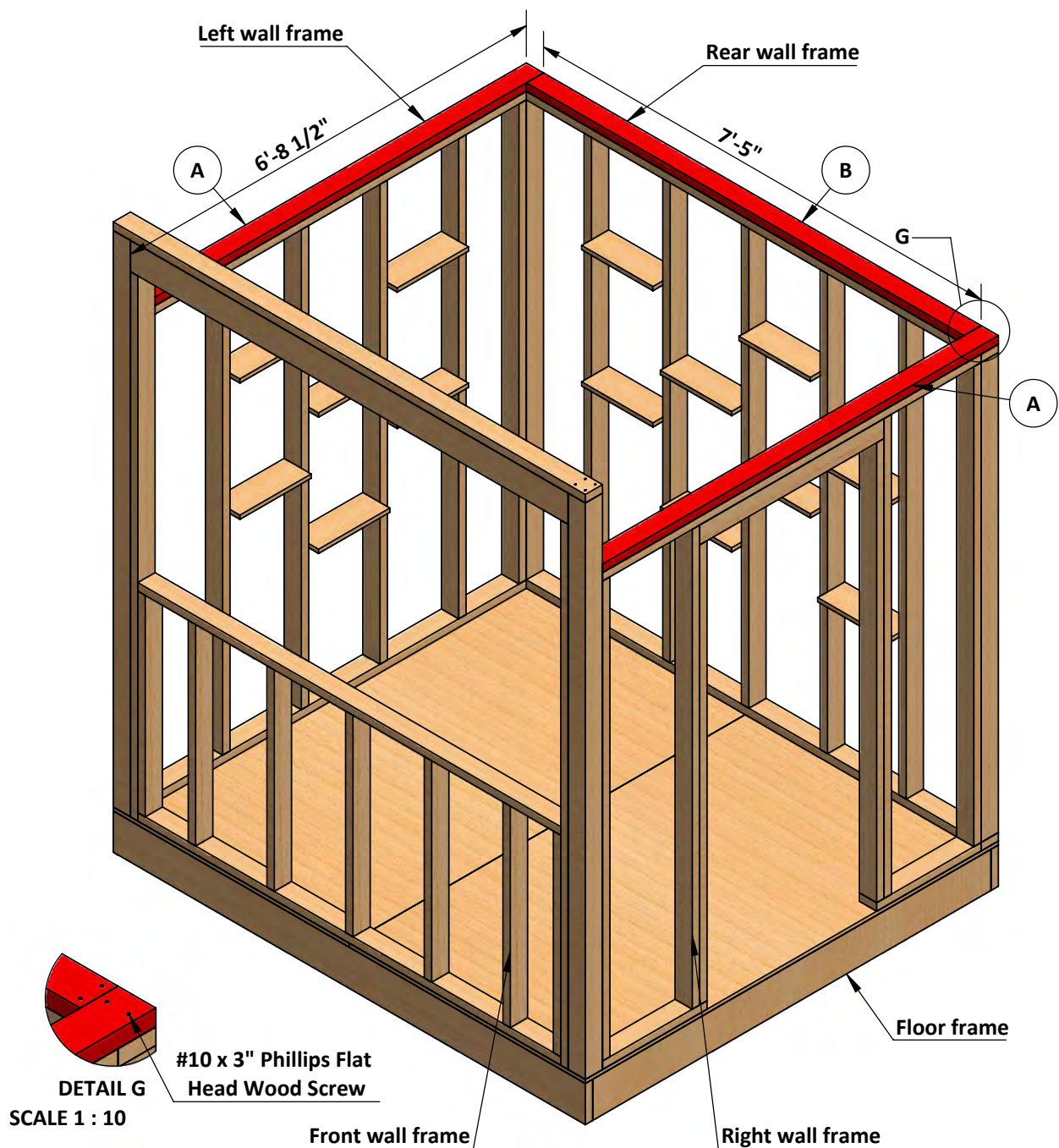
STEP 3

Shed Walls And Top Beam Assembly

3.1 Assemble the front, rear, left and right wall frame with the floor frame and secure them with #10 x 3" phillips flat head wood screws according to the illustration below.

3.2 Assemble the top beams using 2 x 4 lumber and secure them with #10 x 3" phillips flat head wood screws.

Pos	Description	Material	Dimension	Qty
A	Top beams	Lumber (2 x 4)	6'-8 1/2"	2
B	Top beams	Lumber (2 x 4)	7'-5"	1



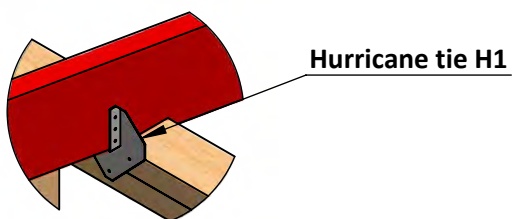
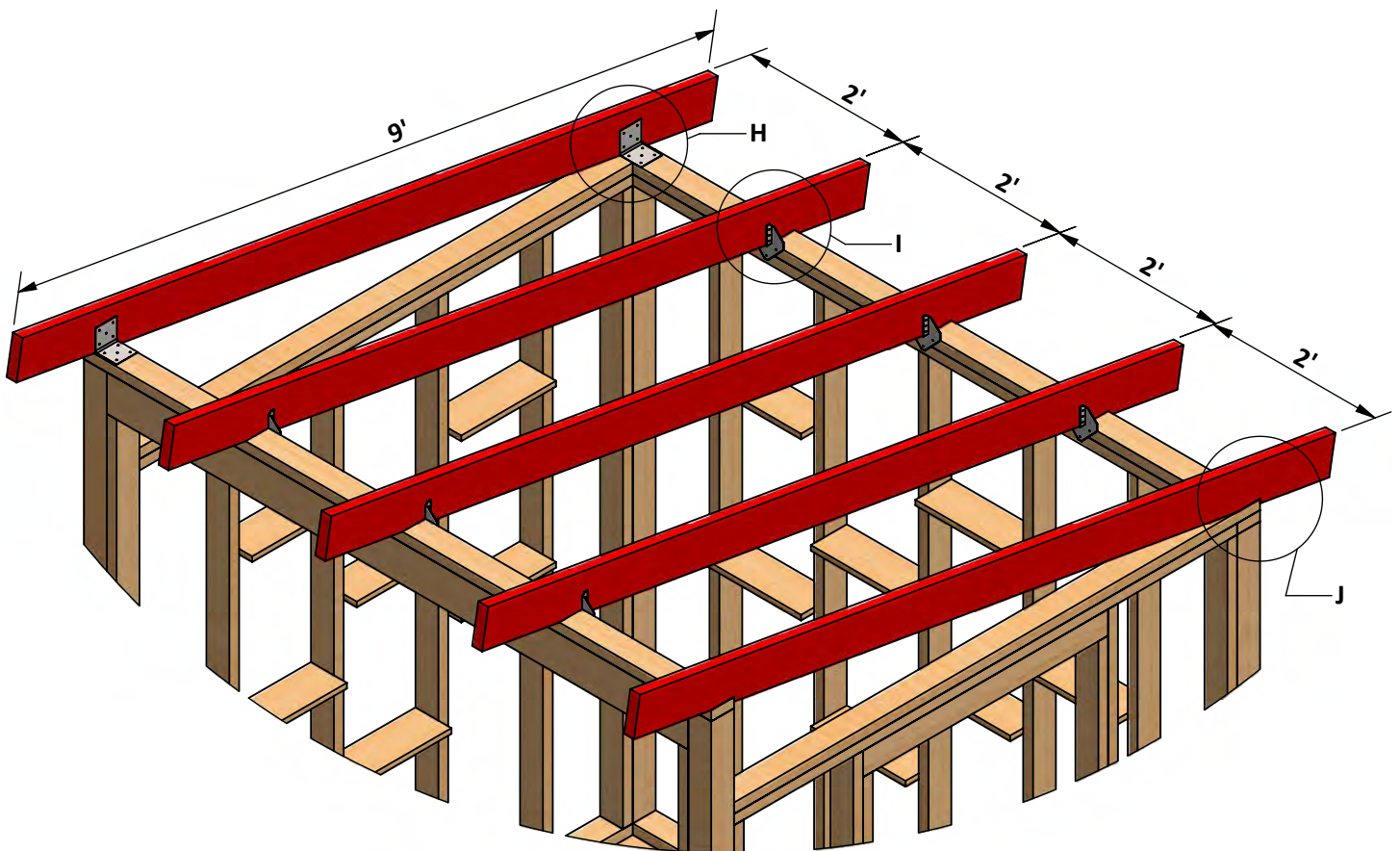
STEP 4

Shed Roof Frame Assembly

4.1 Assemble the rafter using 2 x 6 lumber according to the illustration below.

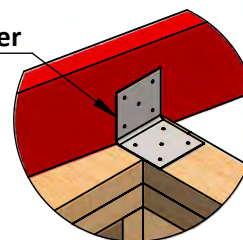
4.2 Secure rafters with hurricane H1 tie and corner bracer with #10 x 1" phillips flat head wood screws.

Pos	Description	Material	Dimension	Qty
A	Rafters	Lumber (2 x 6)	9'	5



DETAIL I
SCALE 1 : 10

3" x 3" Corner Bracer



DETAIL H and J
SCALE 1 : 10

STEP 5

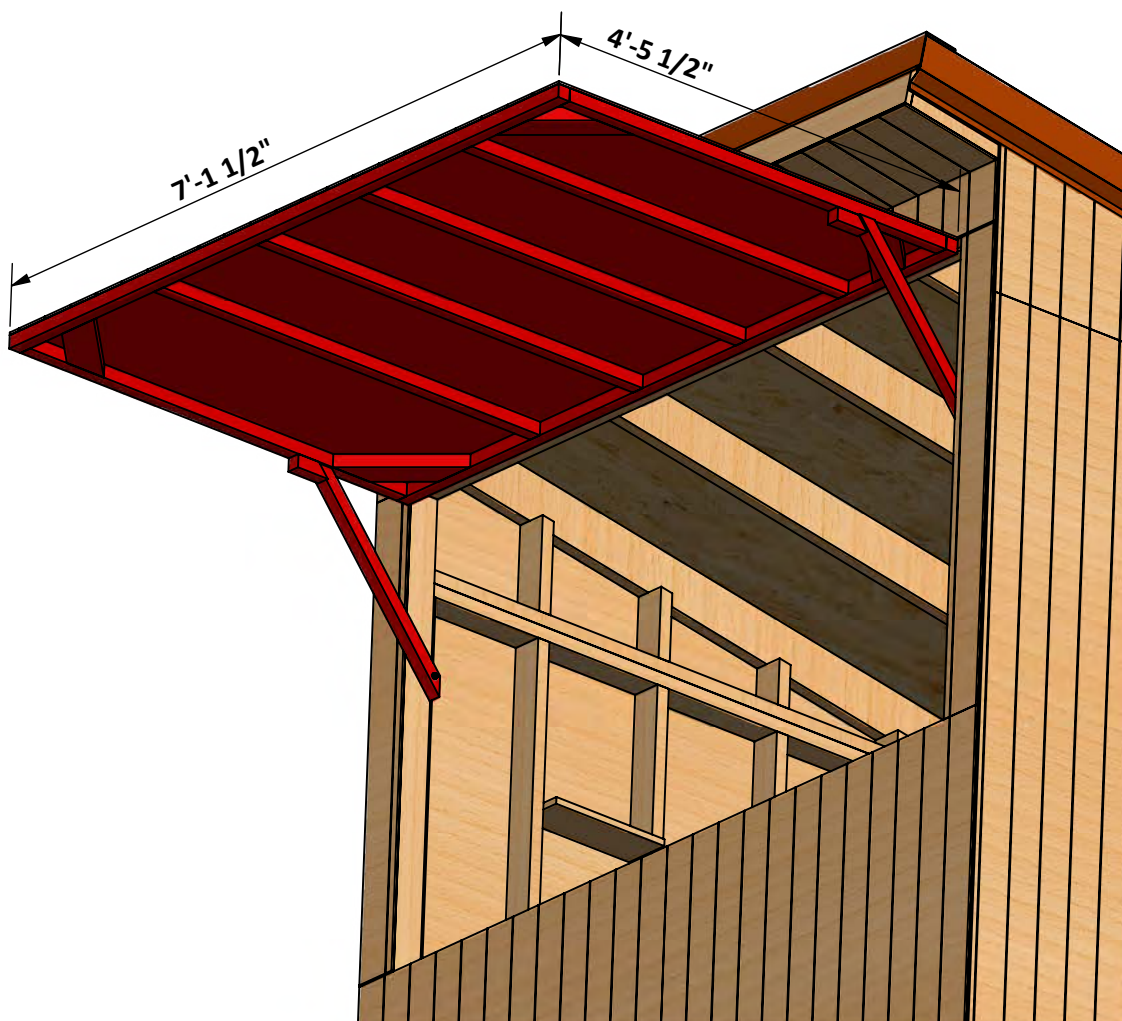
Shed Front Window Lid Assembly

5.1 Assemble the front window lid frame using 2 x 2, 2 x 4 lumbers and the window lid sheathing using plywood siding plybead 11/32 according to the illustration below.

5.2 Secure the front window lid with 3" hinge with #10 x 1" phillips flat head wood screws and hold the window in open position with support beam.

5.3 Hang the window lid support beam with the front wall frame with 1/4 x 3 1/2 connector screws.

Pos	Description	Material	Dimension	Qty
A	Top/bottom beams	Lumber (2 x 2)	7'-1 1/2"	2
B	Studs	Lumber (2 x 2)	4'-2 1/2"	6
C	Cross braces	Lumber (2 x 4)	1'-2"	4
D	Beam	Lumber (2 x 4)	4"	2
E	Window lid sheathing	Plywood Siding Plybead 11/32	4'-5 1/2"x 4'	1
F	Window lid sheathing	Plywood Siding Plybead 11/32	4'-5 1/2"x 3'-1 1/2"	1
G	Support beams	Lumber (2 x 2)	2'-2 7/8"	2



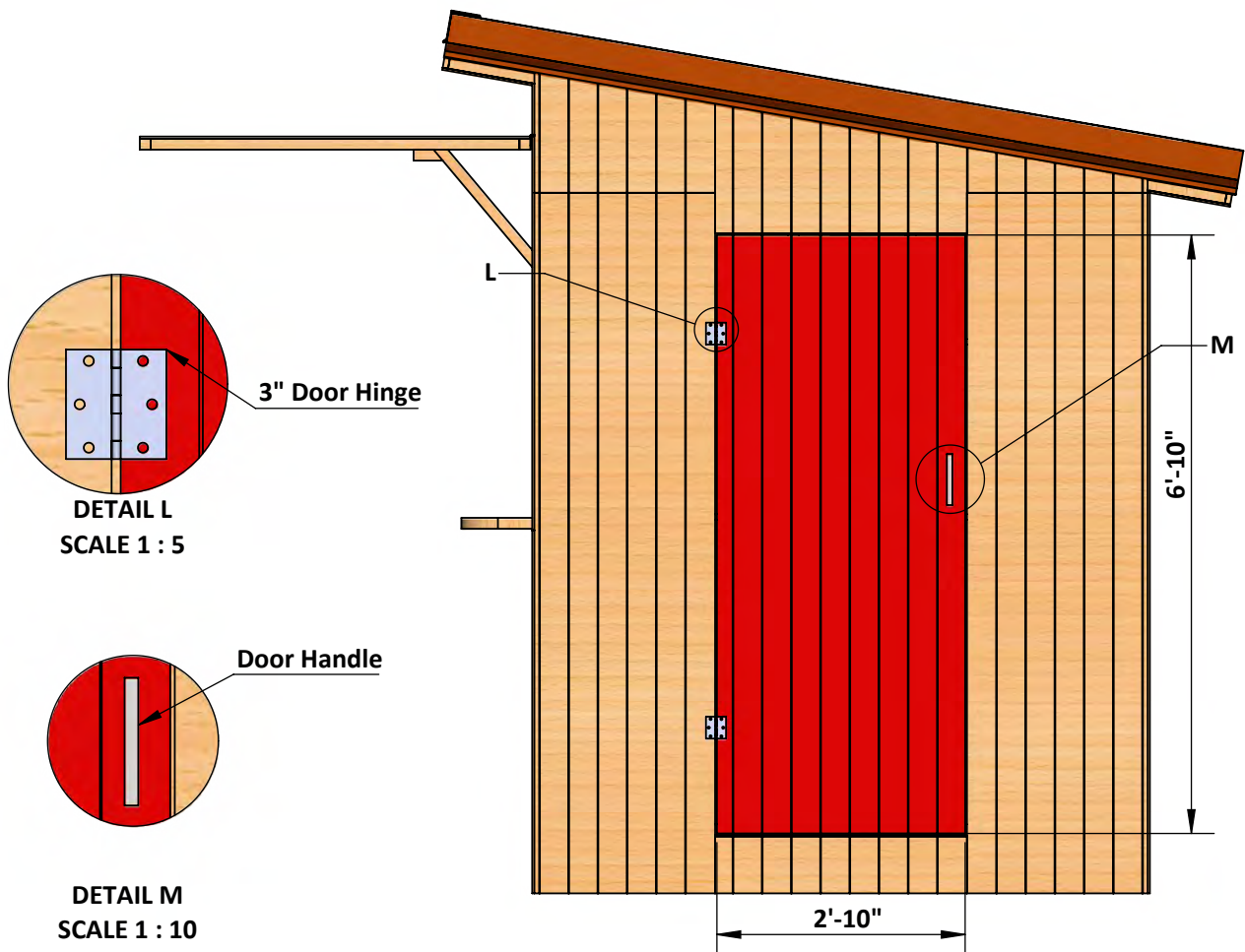
STEP 6

Shed Door Assembly

6.1 Assemble the door frame using 2 x 4 lumbers and door sheathing with plywood siding plybead 11/32 according to the illustration below.

6.2 Secure the door with 3" hinge with #10 x 1" phillips flat head wood screws and the door frame with #10 x 5" phillips flat head wood screws.

Pos	Description	Material	Dimension	Qty
A	Girt	Lumber (2 x 4)	6'-10"	2
B	Girt	Lumber (2 x 4)	2'-10"	2
C	Girt	Lumber (2 x 4)	2'-3"	1
D	Cross brace	Lumber (2 x 4)	3'-8 5/8"	2
E	Door sheathing	Plywood Siding Plybead 11/32	6'-10" x 2'-10"	1



STEP 7

Thank You

Now that your entertainment shed is all done, you can enjoy your shed.



Free vs. Premium Plan: What's the Difference?

We offer both free and premium versions of our detailed shed plans, designed to fit your needs and budget. Check out the table below to see the key differences and choose the plan that's right for you:

Features	Free Plan	Premium Plan
Metric measurements	X	✓
Illustrations per Step	Limited	Every Step
Print Ready Format	X	✓
Step-by-Step Instructions	Basic	Comprehensive
Full Materials & Cutting List	X	✓
Additional Illustrations	X	✓
Additional Blueprints	X	✓
Tools List	X	✓
Fastening Elements List	X	✓
Technical Support	X	✓

[Try Premium Risk-Free](#)

30-day refund policy with no questions asked.



For more great **HOW-TO** plans please visit: <https://craft.camp>

Copyright

The text and illustrations that appear here are the exclusive property of craft.camp and are protected by federal copyright laws. The duplication, sale or distribution of any portion of these plans without prior written consent from the original designer will be subject to the appropriate penalties for copyright infringement. Sharing this plan on the web is only permitted with an indicated original source: <https://craft.camp>