



Free 32' x 32' Garden Bed Plan



Free vs. Premium Plan: What's the Difference?

We offer both free and premium versions of our detailed shed plans, designed to fit your needs and budget. Check out the table below to see the key differences and choose the plan that's right for you:

Features	Free Plan	Premium Plan
Metric measurements	X	✓
Illustrations per Step	Limited	Every Step
Print Ready Format	X	✓
Step-by-Step Instructions	Basic	Comprehensive
Full Materials & Cutting List	X	✓
Additional Illustrations	X	✓
Additional Blueprints	X	✓
Tools List	X	✓
Fastening Elements List	X	✓
Technical Support	X	✓

[Try Premium Risk-Free](#)

30-day refund policy with no questions asked.

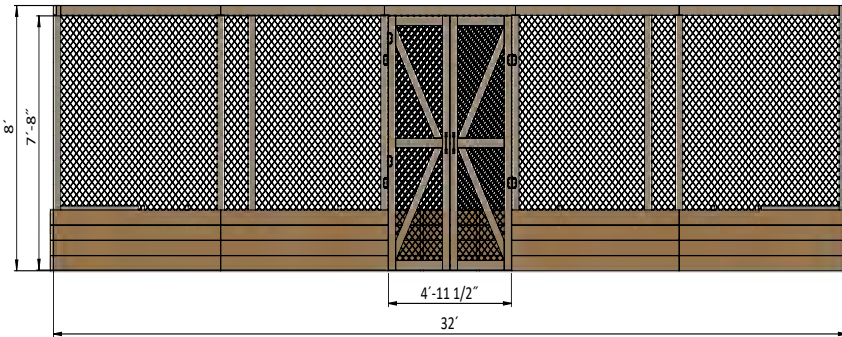
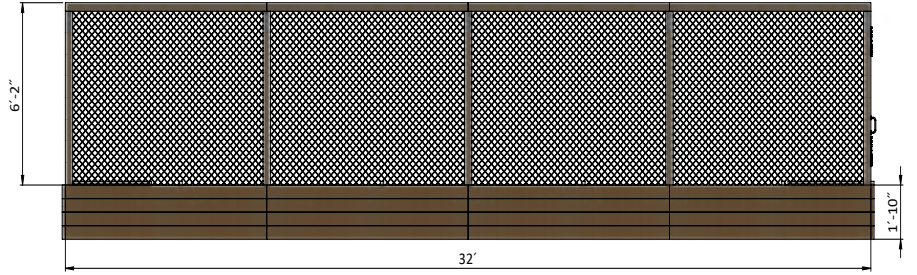
32' x 32' garden bed shopping list

	Unit	Qty	Size	Note
Lumber (2x2)	pcs	22	8'	Studs, Reinforcements
Lumber (2x4)	pcs	39	8'	Joists, Girts, Cross braces
Lumber (2x6)	pcs	188	8'	Wall joists
Lumber (2x6)	pcs	20	10'	Wall joists
Lumber (4x4)	pcs	17	10'	Studs

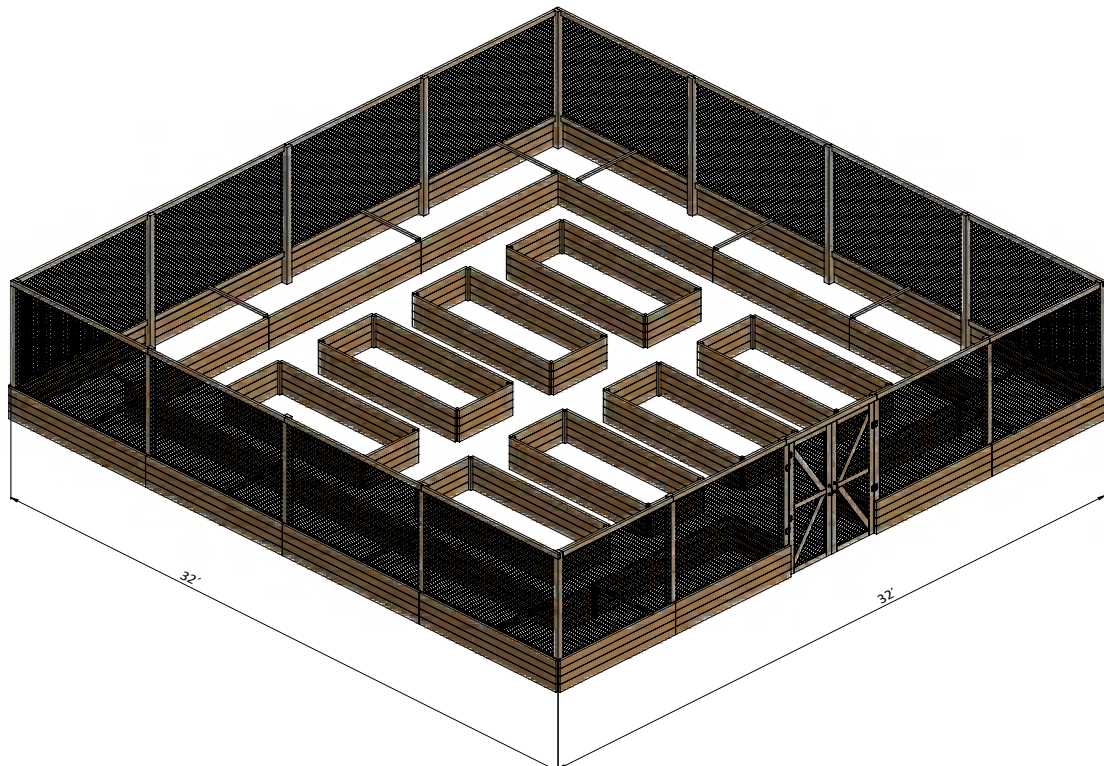
Size & Dimensions

front

side



3D



STEP 1

Foundation Preparation

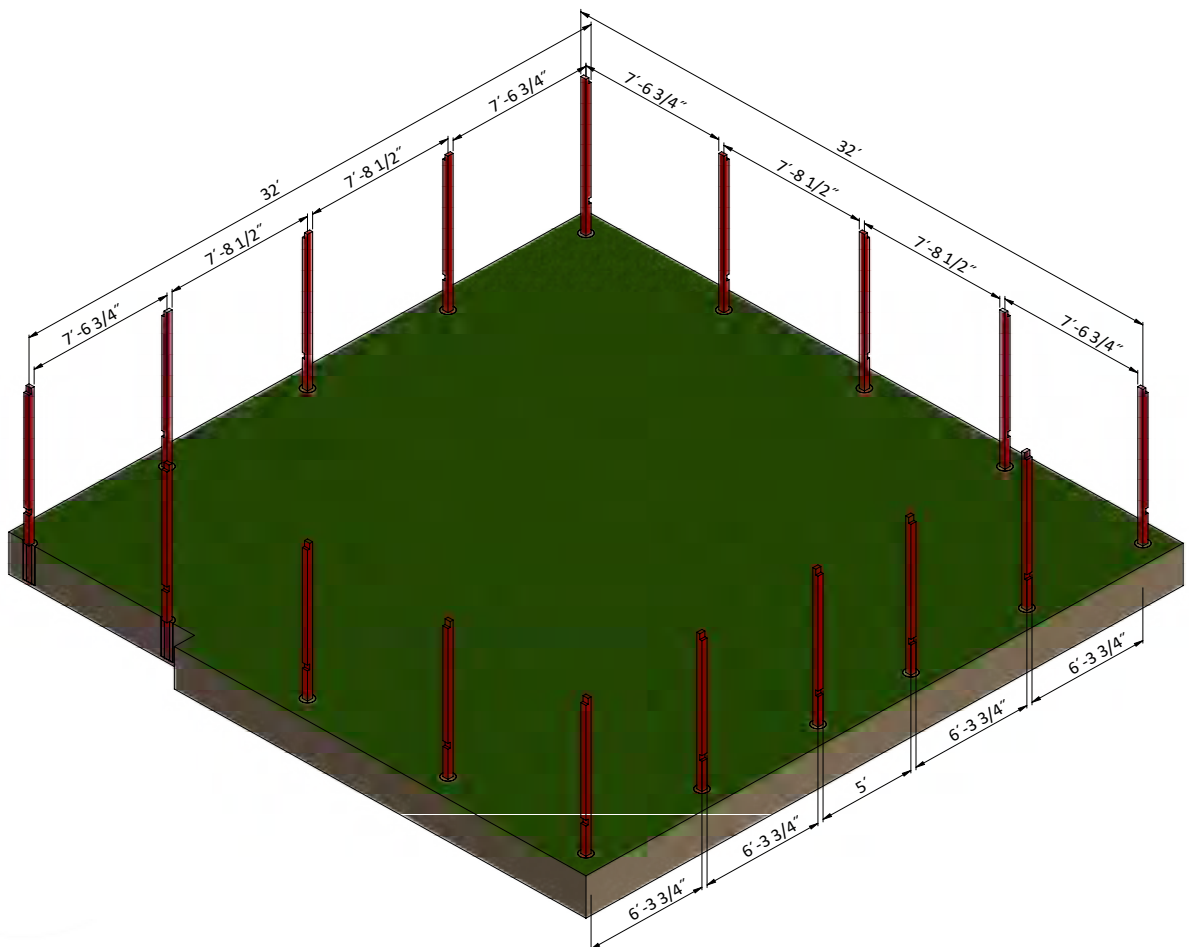
1.1 Fill the pits to ground level with concrete and let cure, or harden.

Since curing times vary between brands, read the packaging for recommended curing times.

1.2 Use 4x4 lumber for the studs. Put the studs in the pits according to the drawing below.

You will need seventeen boards cut to 10' that will be the studs. Prepare cuttings on the studs according to the drawing.

1.3 Using a speed square or carpenter's square, check the corners to make sure they are 90°.



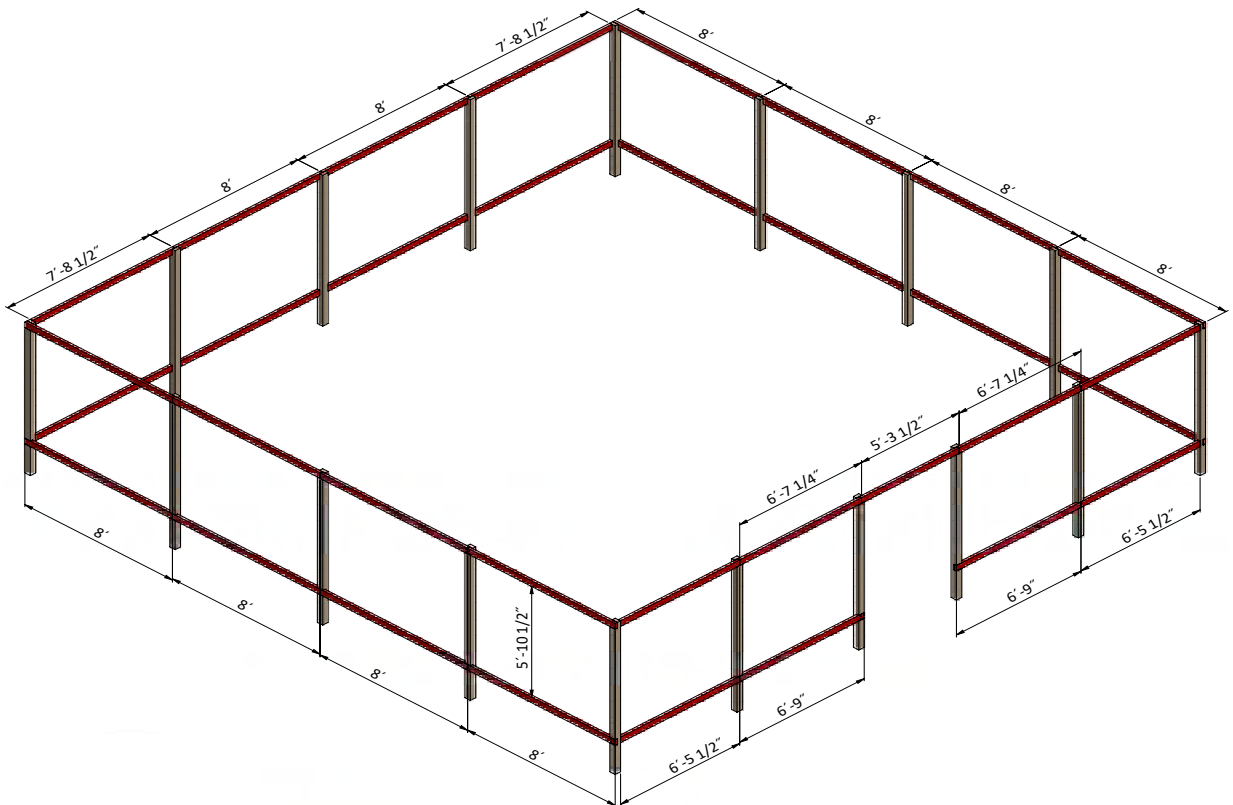
STEP 2

Assemble the Main Frame

2.1 Use 2x4 lumber for the main frame. You will need twenty boards cut to 8', four boards cut to 7'-8 1/2", four boards cut to 6'-5 1/2", two boards cut to 6'-7 1/4", two boards cut to 6'-9" and one board cut to 5'-3 1/2" that will be the joists.

2.2 Use 3" screws for fasten it to the main frame.

2.3 Using a speed square or carpenter's square, check the corners to make sure they are 90°.



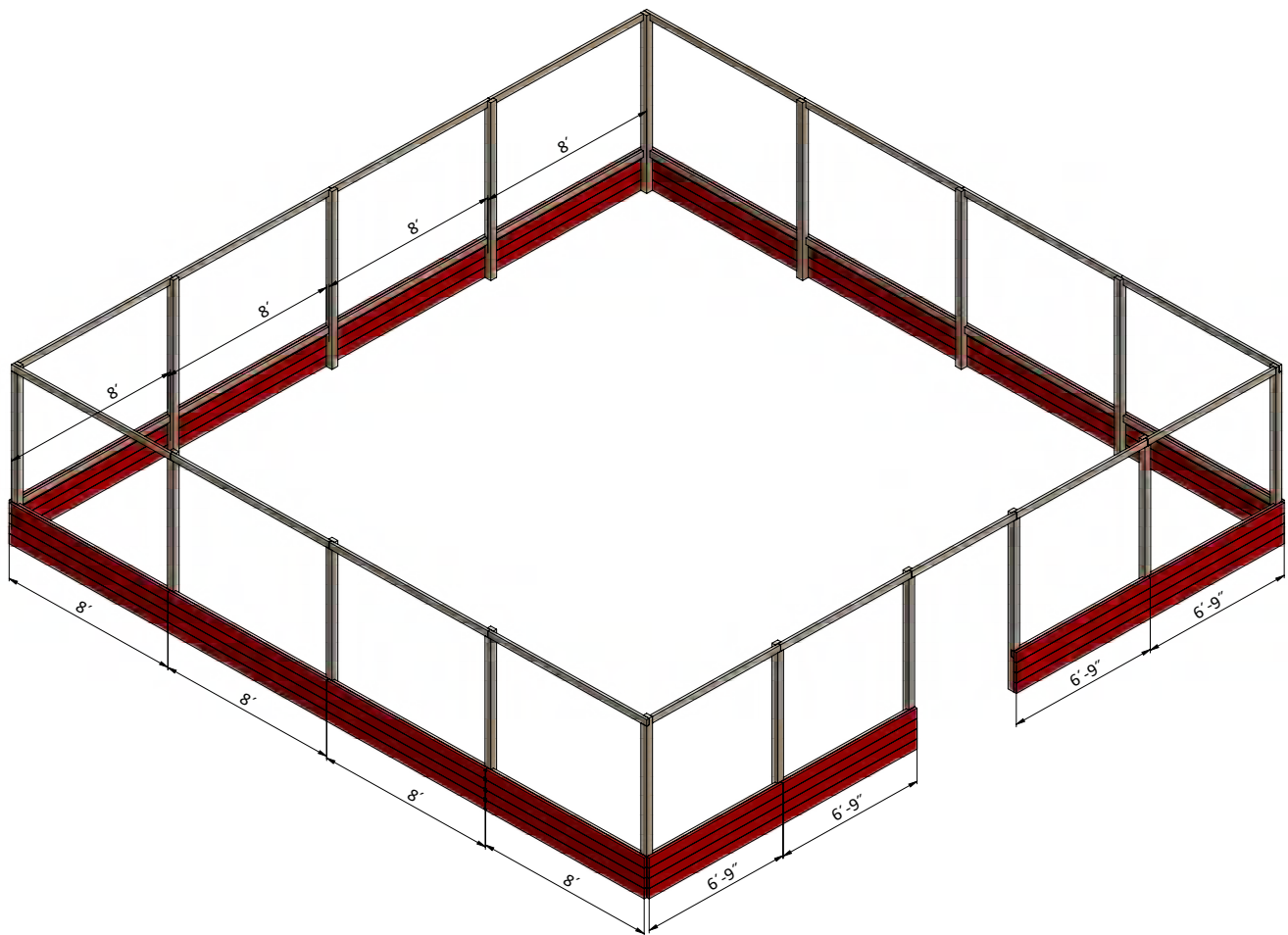
STEP 3

Assemble the Outer Walls

3.1 Use 2x6 lumber for the outer walls. You will need forty eight boards cut to 8' and sixteen boards cut to 6'-9" that will be the wall joists.

3.2 Use 3" screws for fasten it to the main frame.

3.3 Using a speed square or carpenter's square, check the corners to make sure they are 90°.



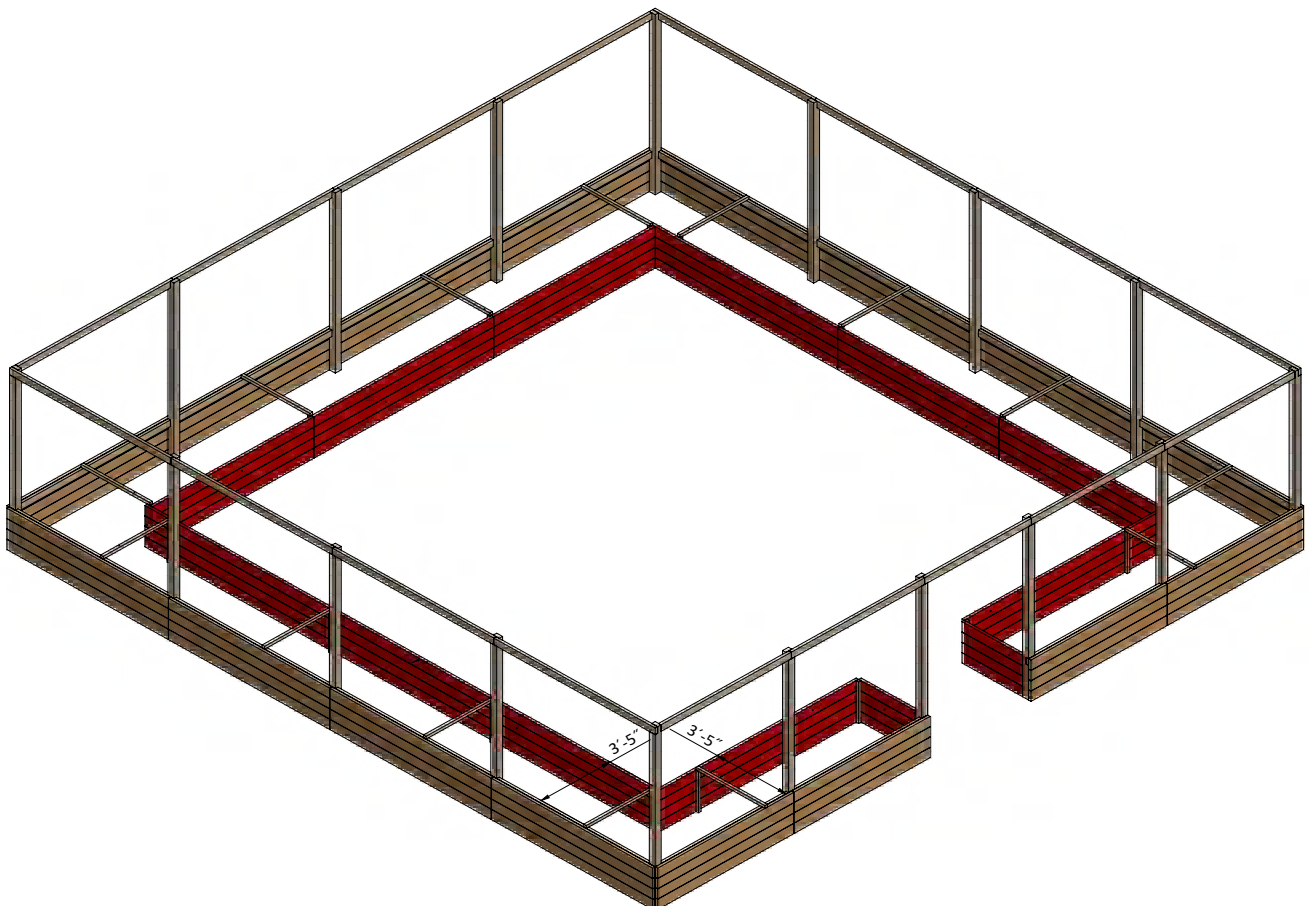
STEP 4

Assemble the Outer Bed's Walls

4.1 Use 2x2 and 2x6 lumber for the outer bed's walls. You will need twenty four boards cut to 8', eight boards cut to 10', eight boards cut to 9'-3 1/2", four boards cut to 8'-11" and eight boards cut to 3' that will be the wall joists. You will need fourteen boards cut to 3'-5" that will be the reinforcements.

4.2 Use 3" screws for fasten it to the main frame.

4.3 Using a speed square or carpenter's square, check the corners to make sure they are 90°.



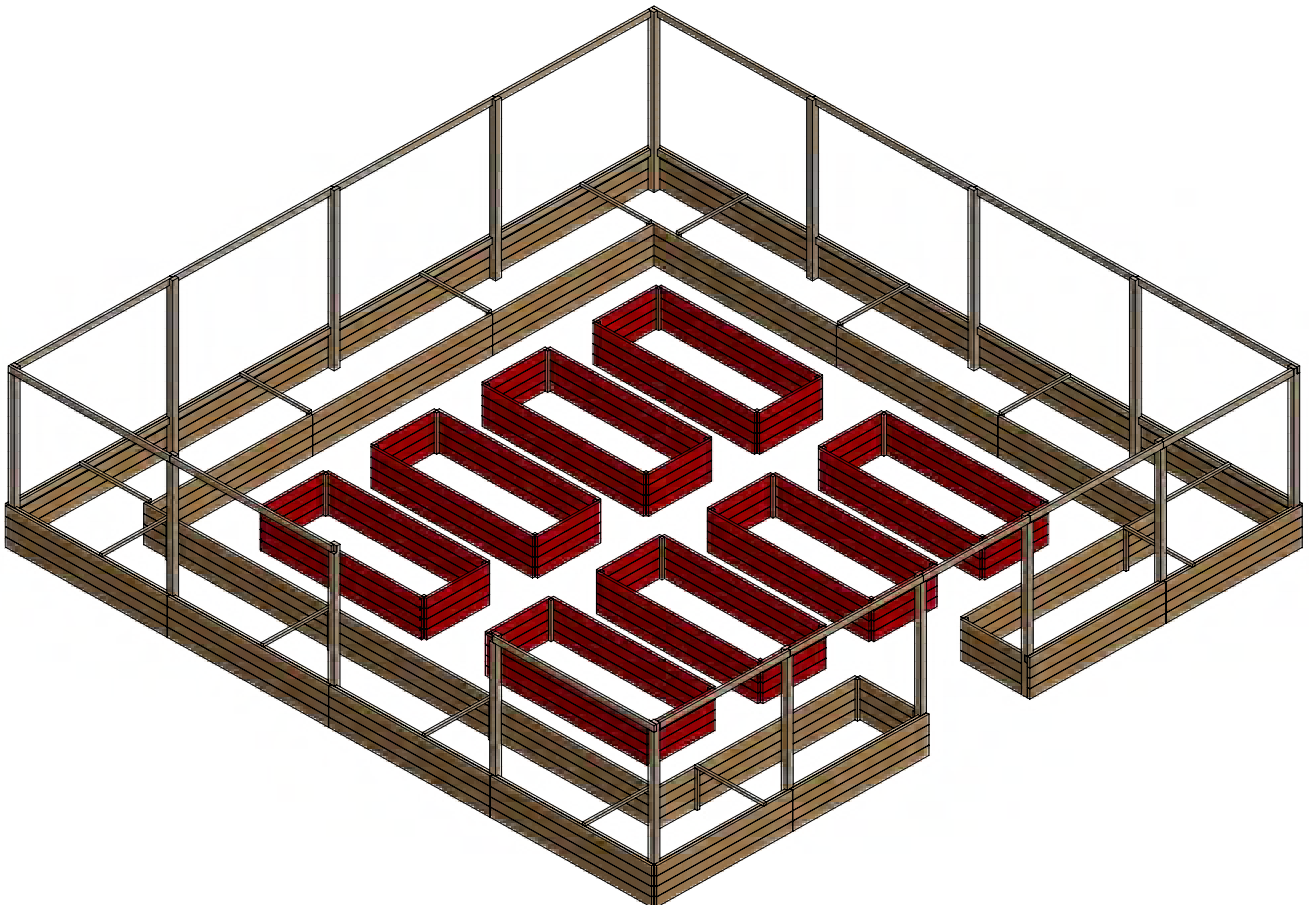
STEP 5

Assemble the Inside Bed's Walls

5.1 Use 2x6 lumber for the outer bed's walls. You will need sixty four boards cut to 8' and sixty four boards cut to 3'-1 1/2" that will be the wall joists.

5.2 Use 3" screws for fasten it to the main frame.

5.3 Using a speed square or carpenter's square, check the corners to make sure they are 90°.



STEP 6

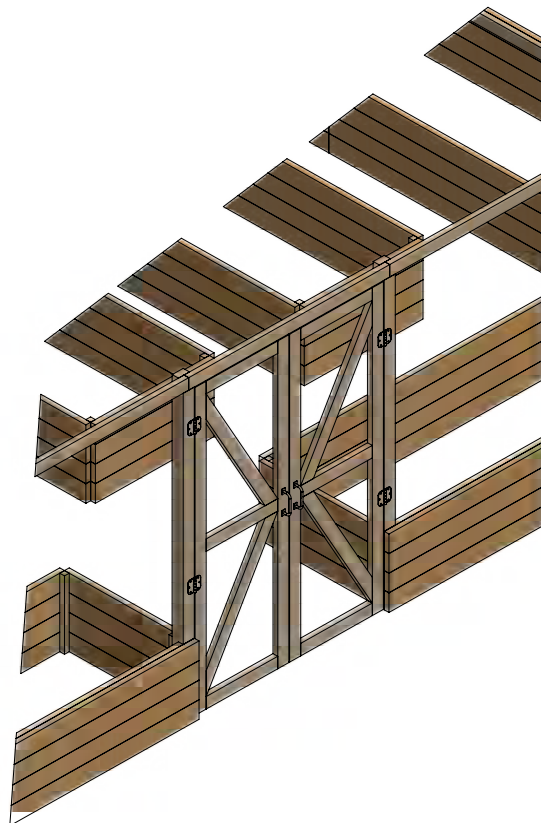
Assemble the Front Doors

You will need two door frames.

6.1 Build the door frame using 2x4 lumber and secure with 5" wood screws. For each door frame you will need three boards cut to 1'-10 3/4" that will be the horizontal girts, two boards cut to 7'-8" that will be vertical girts and two boards cut to 3'-10 1/2" that will be the crossbraces.

6.2 You will need two door hinges and one handle for each door frame.

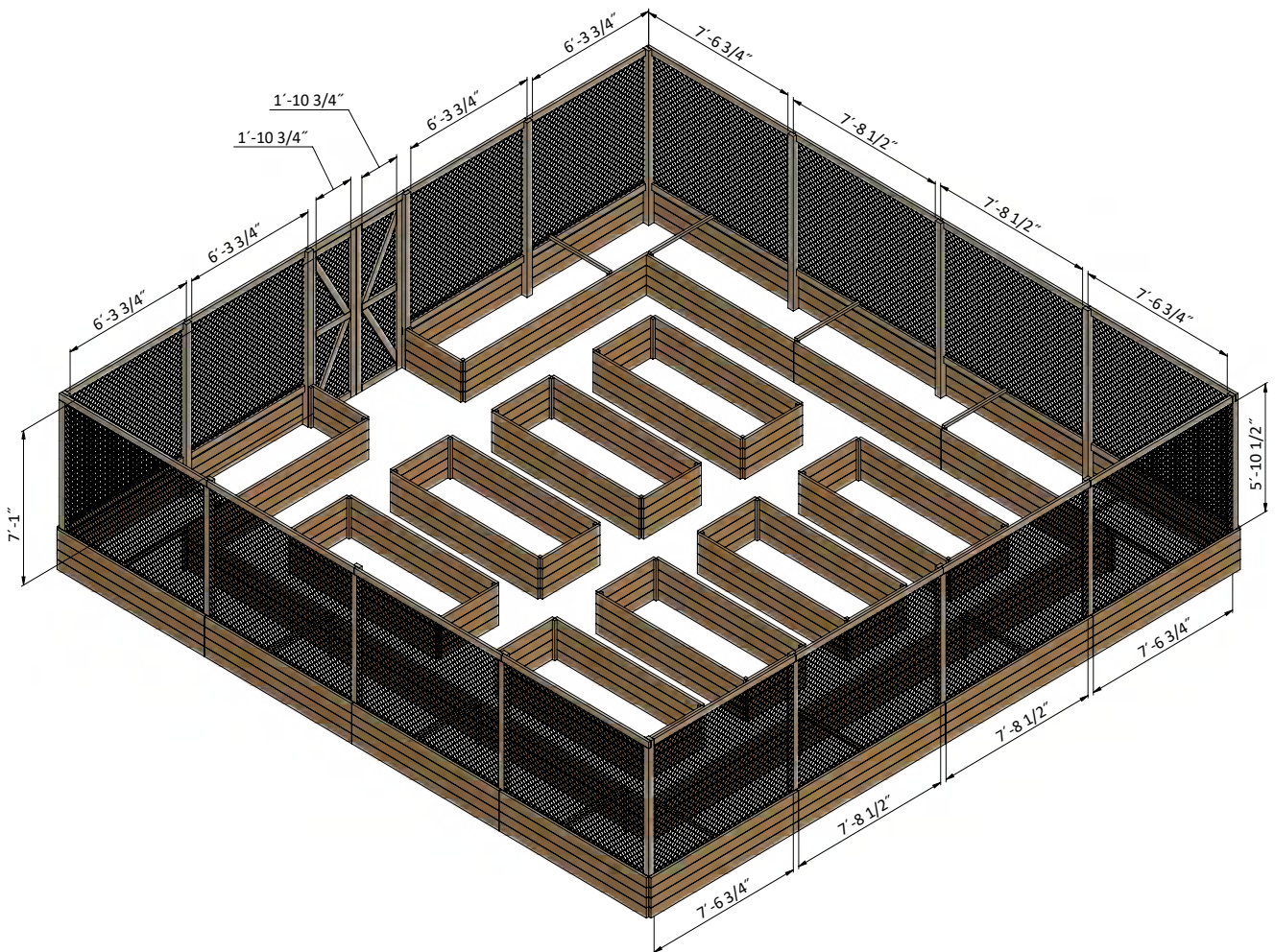
6.3 Using a speed square or carpenter's square, check the corners to make sure they are 90°.



STEP 7

Mesh Wall Installation

7.1. Cover the walls with 1/4" wire mesh with the help of industrial stapler. You will need 780 sq ft.



STEP 8

Final Touches

Now that your garden bed is all done, you are ready to decorate it any way you want using your favorite paint, stain, or preservative.



Free vs. Premium Plan: What's the Difference?

We offer both free and premium versions of our detailed shed plans, designed to fit your needs and budget. Check out the table below to see the key differences and choose the plan that's right for you:

Features	Free Plan	Premium Plan
Metric measurements	X	✓
Illustrations per Step	Limited	Every Step
Print Ready Format	X	✓
Step-by-Step Instructions	Basic	Comprehensive
Full Materials & Cutting List	X	✓
Additional Illustrations	X	✓
Additional Blueprints	X	✓
Tools List	X	✓
Fastening Elements List	X	✓
Technical Support	X	✓

[Try Premium Risk-Free](#)

30-day refund policy with no questions asked.



For more great **HOW-TO** plans please visit: <https://craft.camp>

Copyright

The text and illustrations that appear here are the exclusive property of craft.camp and are protected by federal copyright laws. The duplication, sale or distribution of any portion of these plans without prior written consent from the original designer will be subject to the appropriate penalties for copyright infringement. Sharing this plan on the web is only permitted with an indicated original source: <https://craft.camp>