



20' x 20' Attach Gable Carport Plan

Free vs. Premium Plan: What's the Difference?

We offer both free and premium versions of our detailed shed plans, designed to fit your needs and budget. Check out the table below to see the key differences and choose the plan that's right for you:

Features	Free Plan	Premium Plan
Steps Count	10	20
Illustrations per Step	Limited	Every Step
Print Ready Format	X	✓
Step-by-Step Instructions	Basic	Comprehensive
Full Materials & Cutting List	X	✓
Additional Illustrations	X	✓
Additional Blueprints	X	✓
Tools List	X	✓
Fastening Elements List	X	✓
Technical Support	X	✓

Try Premium Risk-Free

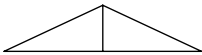
30-day refund policy with no questions asked.

a Gable a Shopping List

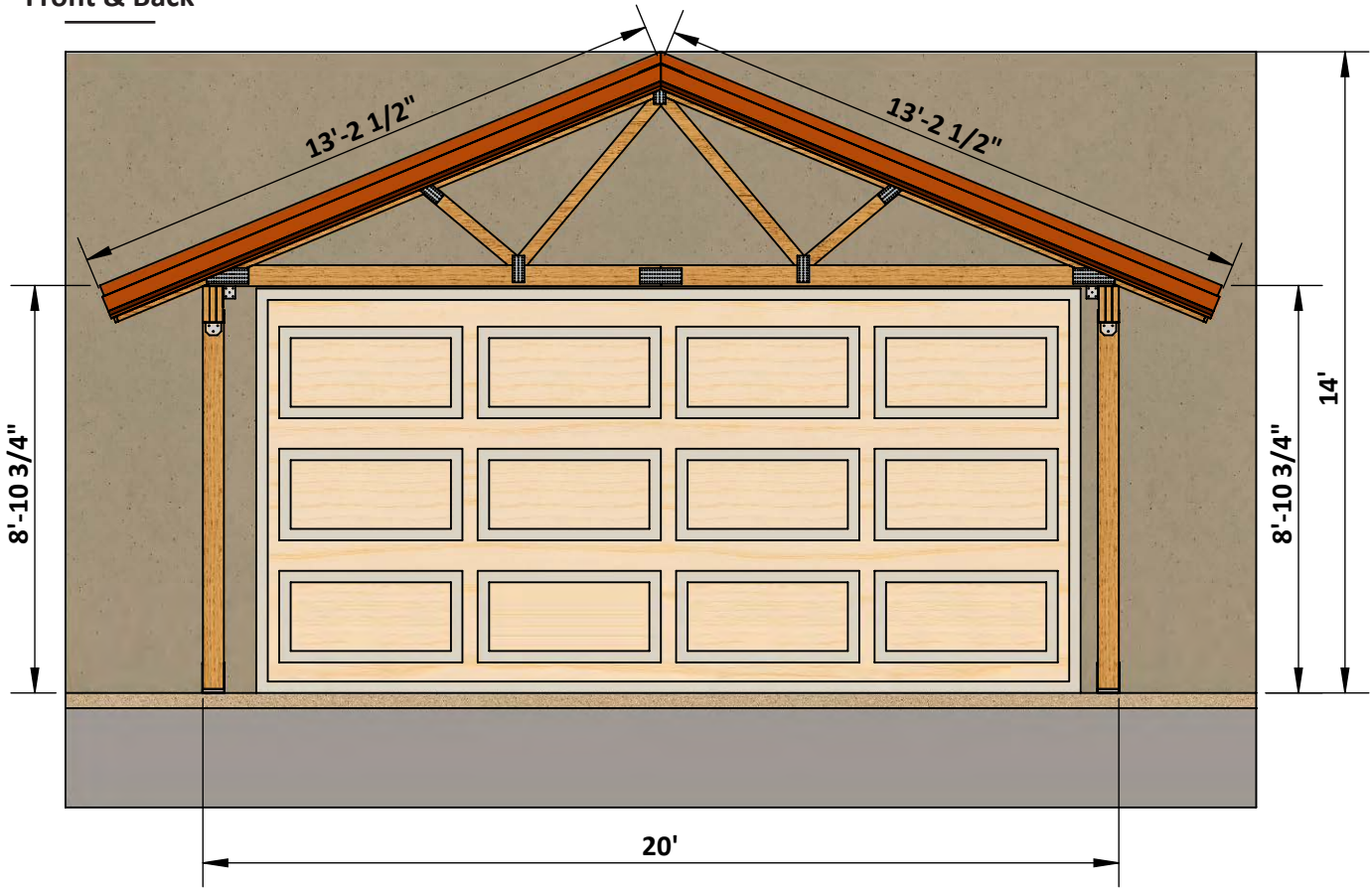
Lumber (6 x 6)	Pcs	8	8'
Lumber (2 x 6)	Pcs	10	10'
Lumber (1 x 6)	Pcs	4	10'
LVL (2 x10)	Pcs	6	20'
20'Residential common truss 5/12 pitch	Pcs	11	20'
OSB 1/2"	Pcs	20	8' x 4'
Corrugated Metal Roof Panel	Square ft	520	26'-1/2" x 19'-11"

Size & Dimensions

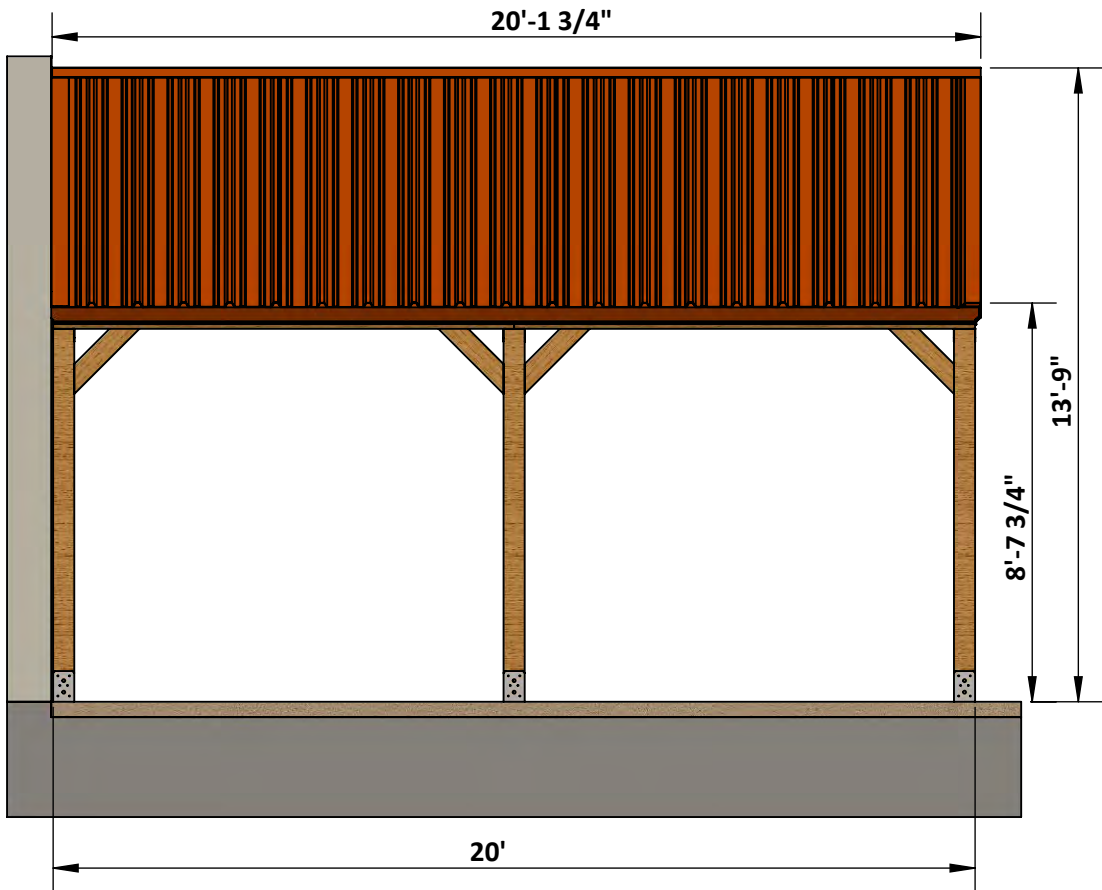
Roof Pitch 5/12



Front & Back



Right & Left



Model View

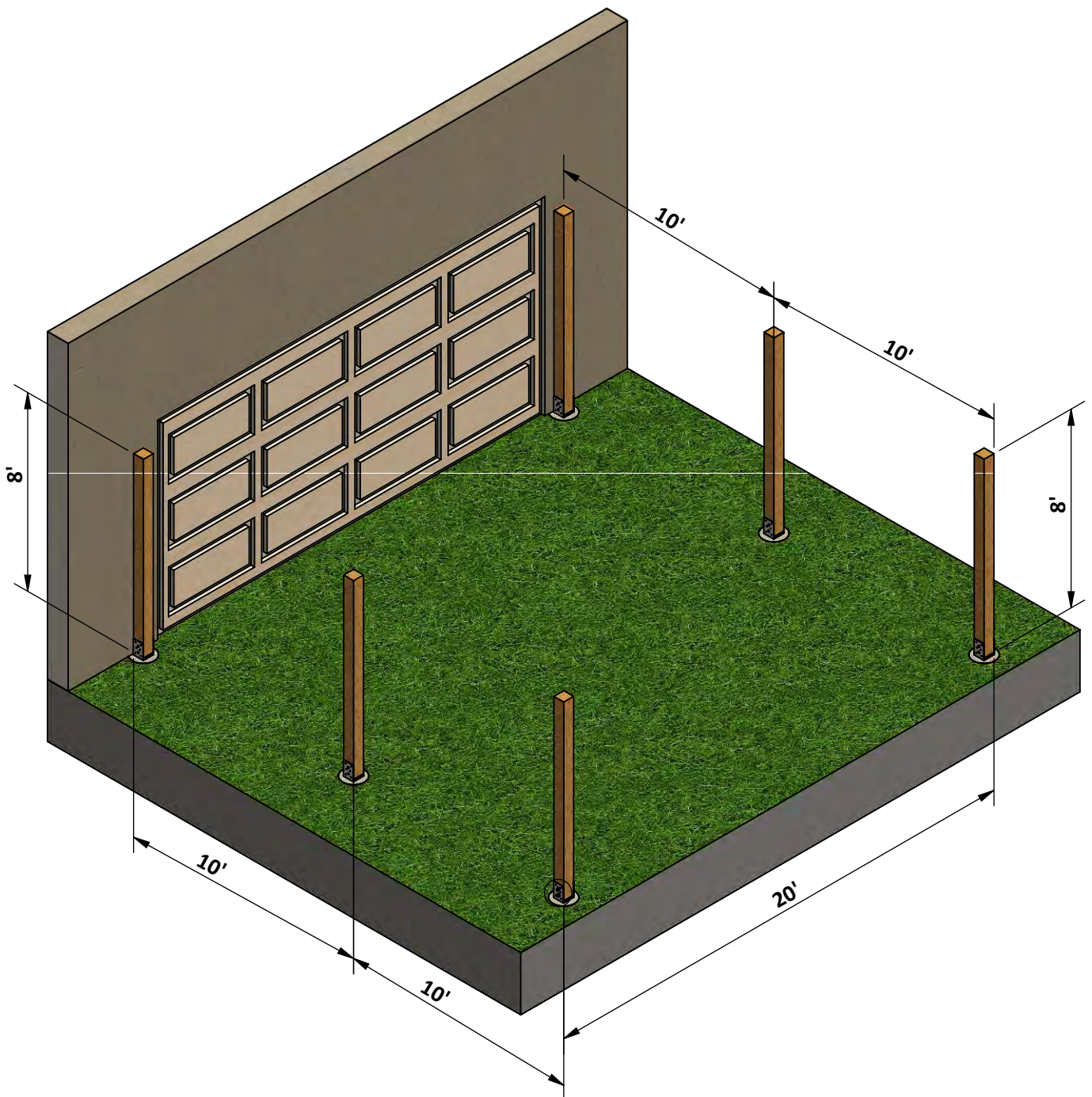


STEP 1

Post Installation

1.1 Install the right side and left side posts using 6 x 6 lumber.

1.2 Secure the post with metal post base with 3" wood screws and Hexabolt 5/8-18x6.5x1.75, hexanut 5/8, washer.

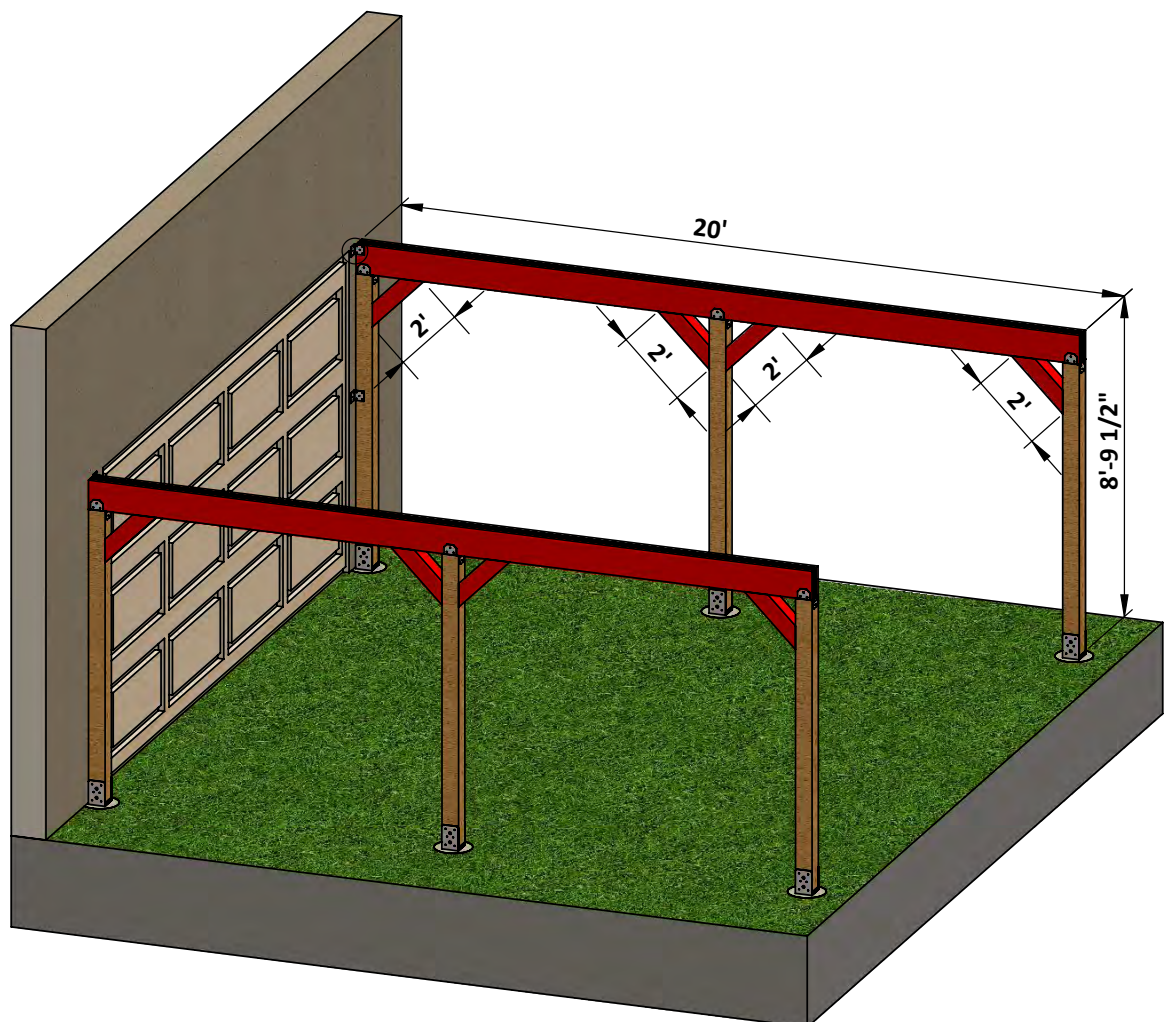


STEP 2

Headers and Cross braces assembly

2.1 Assemble the headers using 3 x 2 x 10 LVL secure with 4" screws and cross braces using 6 x 6 lumber

2.2 Secure all headers with post cap using 3" wood screws and cross braces with 5" wood screws and the header end to the wall with corner bracer with concrete anchor and plastic dowels.

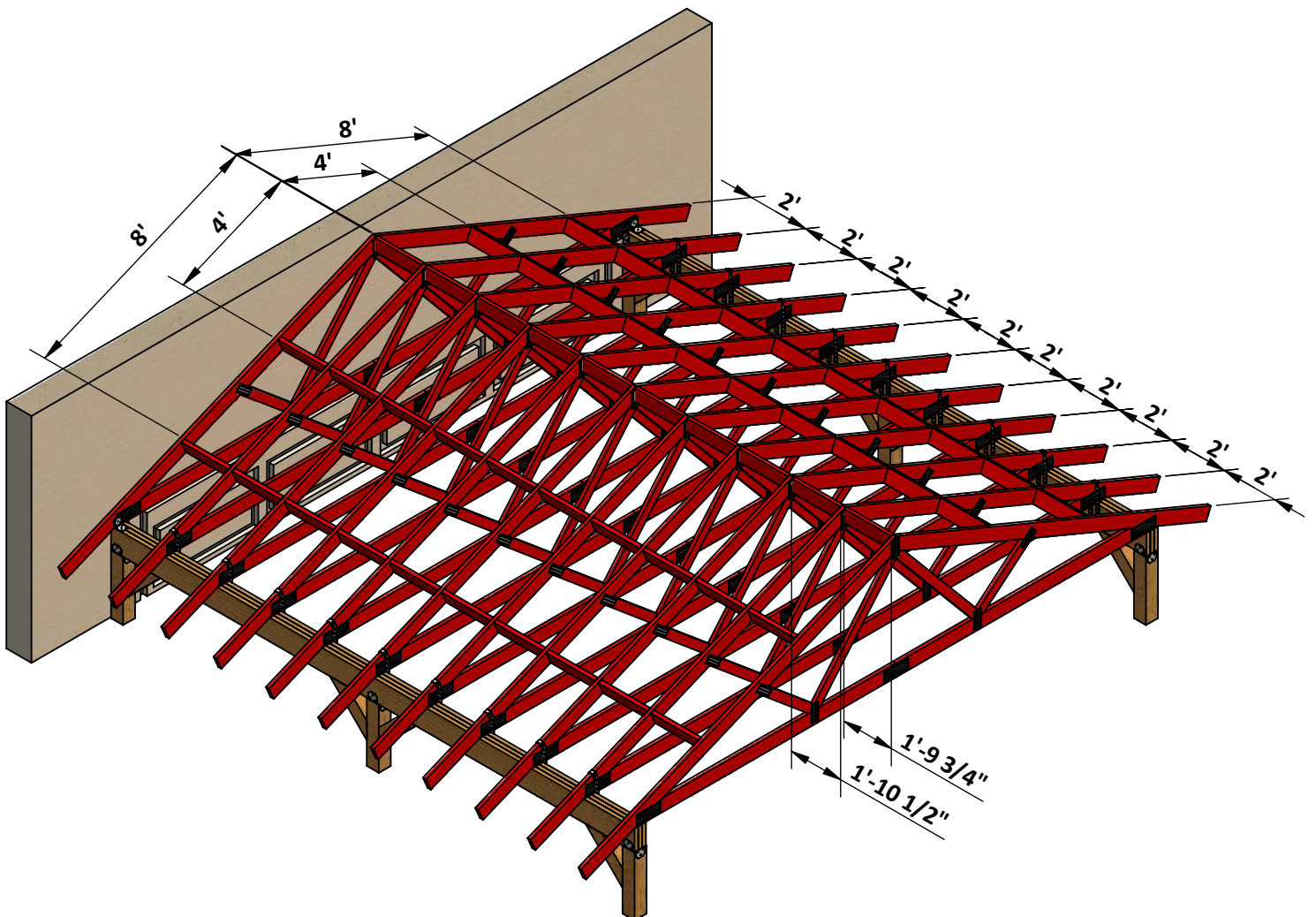


STEP 3

Roof Assembly

3.1 Assemble the 20' Residential common trusses and secure with corner bracer, H16 hurricane tie with 1" wood screw,

3.2 Secure all ridge board and blocking board with 2" wood screw

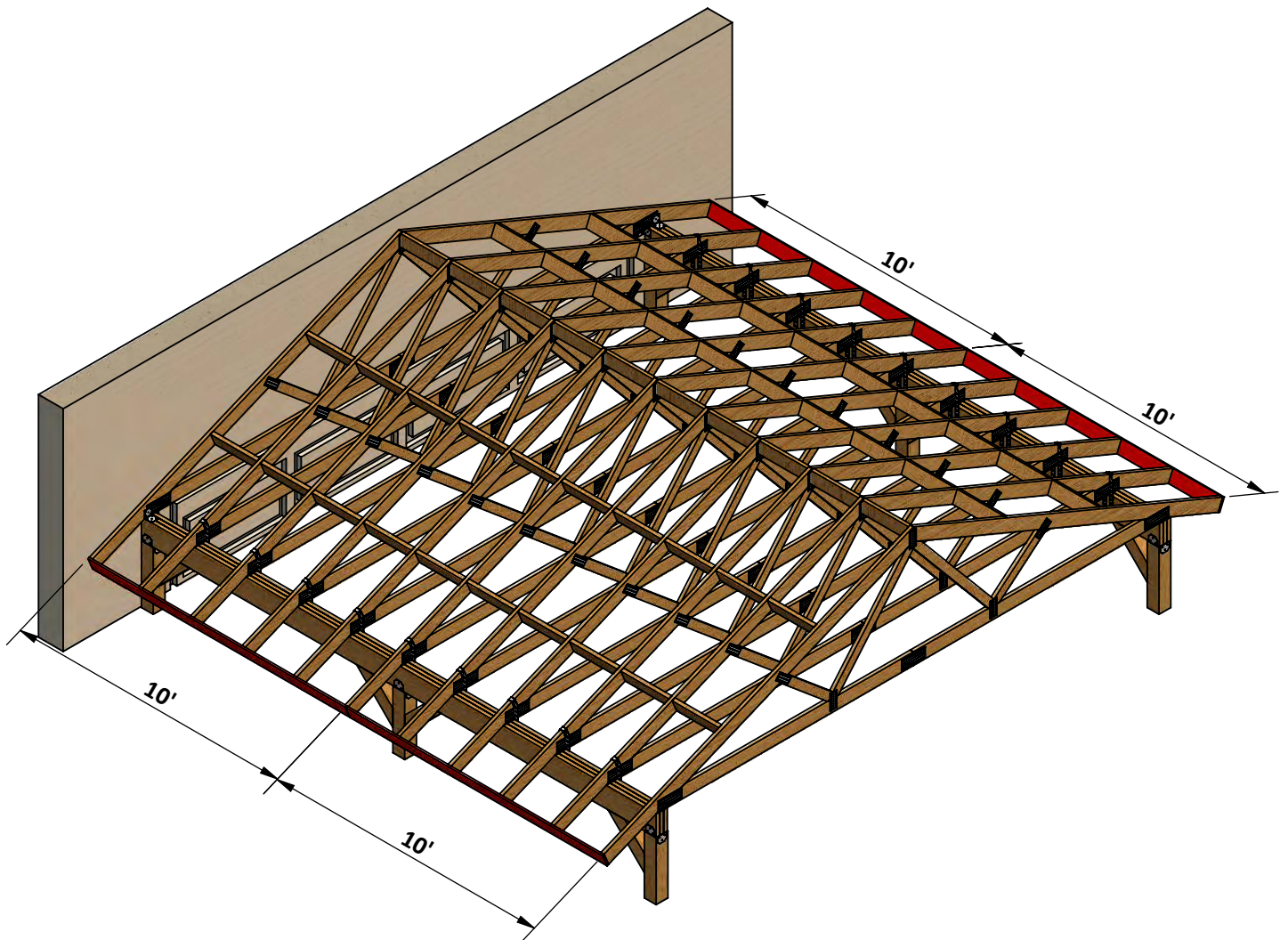


STEP 4

Fascias Assembly

4.1 Assemble the fascias using 1 x 6 lumber.

4.2 Secure the fascias with 2" wood screws.



STEP 5

Metal Roof Assembly

5.1 Assemble the corrugated metal roof panels in 26'-1/2" x 19'-11" roof area.

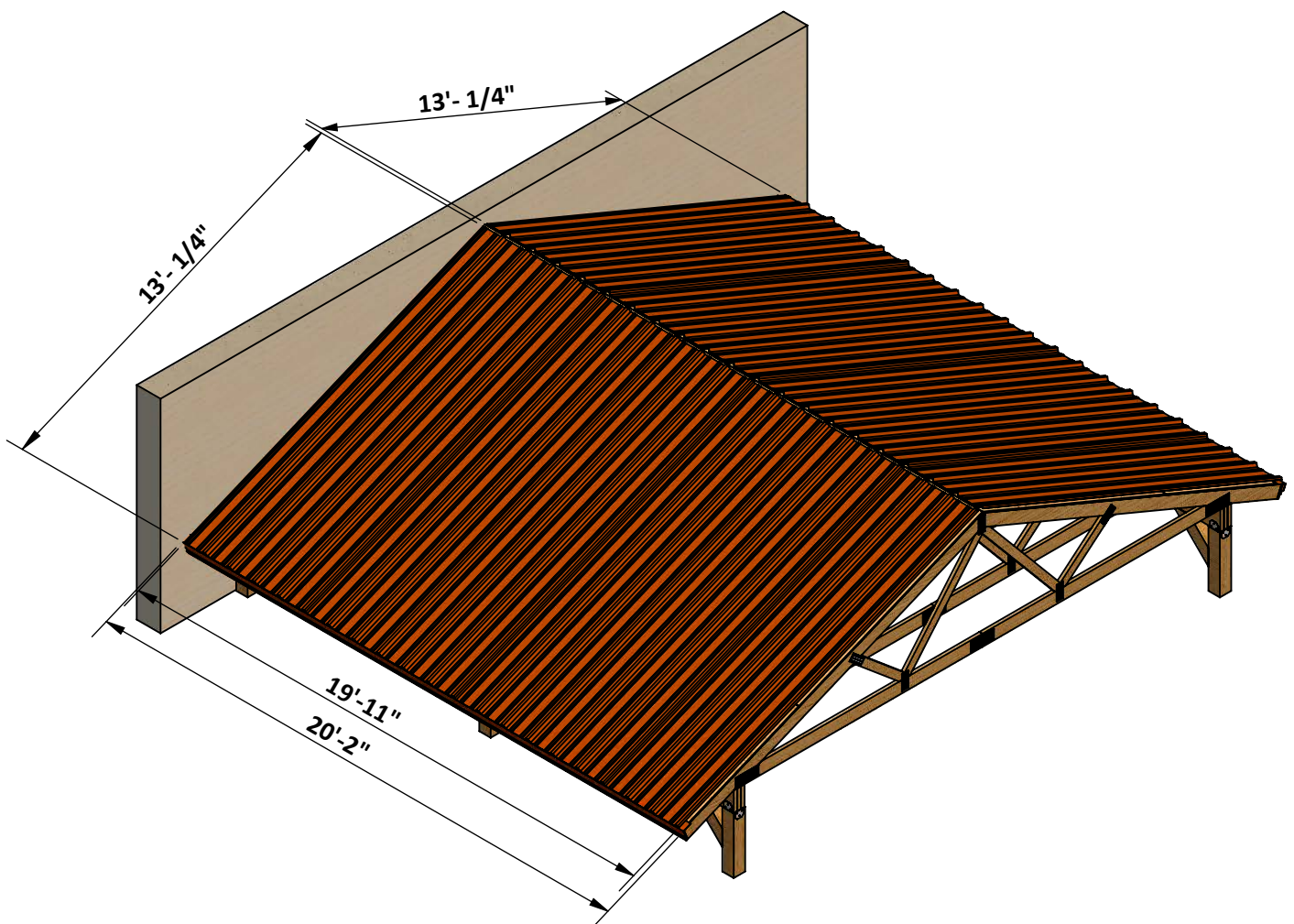
5.2 Assemble the eave flashing EF-3 according to node 1 below.

5.3 Assemble the gable rake GR-6 according to node 2 below.

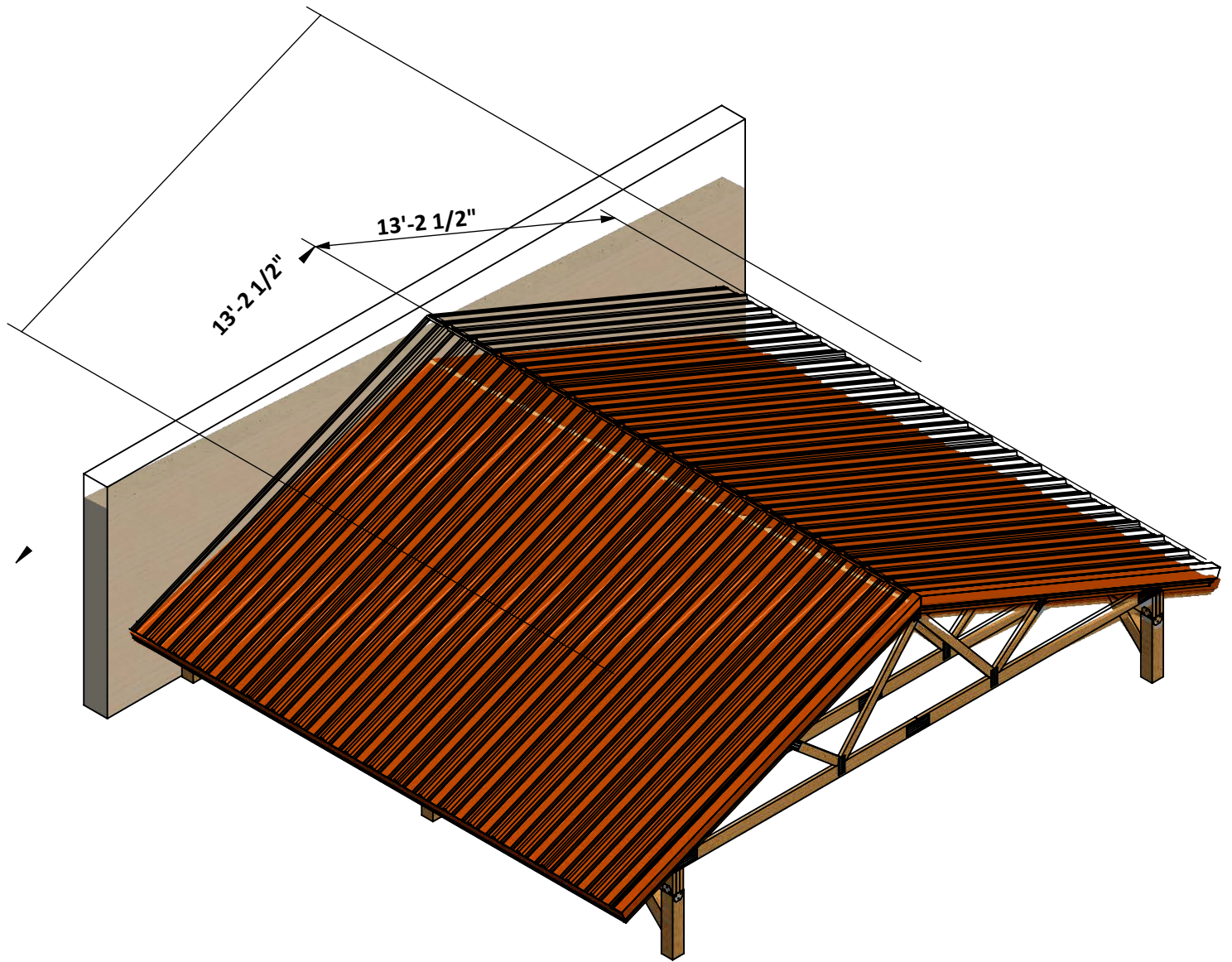
5.4 Assemble the end wall flashing EW-1 according to node 3 below.

5.5 Assemble the hip cap RC-8 according to node 4 below.

5.6 Secure the metal roof panels, eave flashing, gable rake and high side eave and end wall flashing with #9x1-1/2 screws



STEP 6



STEP 7

Final Touches

Now that your carport is all done, you are ready to decorate it any way you want using your favorite paint, stain, or preservative.



Free vs. Premium Plan: What's the Difference?

We offer both free and premium versions of our detailed shed plans, designed to fit your needs and budget. Check out the table below to see the key differences and choose the plan that's right for you:

Features	Free Plan	Premium Plan
Steps Count	10	20
Illustrations per Step	Limited	Every Step
Print Ready Format	X	✓
Step-by-Step Instructions	Basic	Comprehensive
Full Materials & Cutting List	X	✓
Additional Illustrations	X	✓
Additional Blueprints	X	✓
Tools List	X	✓
Fastening Elements List	X	✓
Technical Support	X	✓

Try Premium Risk-Free

30-day refund policy with no questions asked.



For more great **HOW-TO** plans please visit: <https://craft.camp>

Copyright

The text and illustrations that appear here are the exclusive property of craft.camp and are protected by federal copyright laws. The duplication, sale or distribution of any portion of these plans without prior written consent from the original designer will be subject to the appropriate penalties for copyright infringement. Sharing this plan on the web is only permitted with an indicated original source: <https://craft.camp>