



Free 14'x24' Garage Plan

Free vs. Premium Plan: What's the Difference?

We offer both free and premium versions of our detailed shed plans, designed to fit your needs and budget. Check out the table below to see the key differences and choose the plan that's right for you:

Features	Free Plan	Premium Plan
Steps Count	11	19
Illustrations per Step	Limited	Every Step
Print Ready Format	X	✓
Step-by-Step Instructions	Basic	Comprehensive
Full Materials & Cutting List	X	✓
Additional Illustrations	X	✓
Additional Blueprints	X	✓
Tools List	X	✓
Fastening Elements List	X	✓
Technical Support	X	✓

[Try Premium Risk-Free](#)

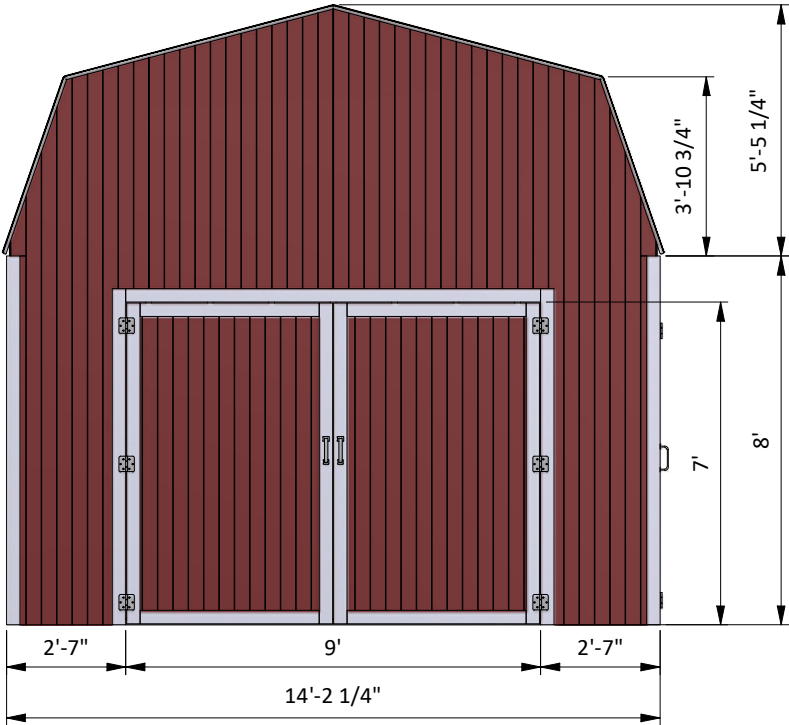
60-day refund policy with no questions asked.

14'x24' Garage shopping list

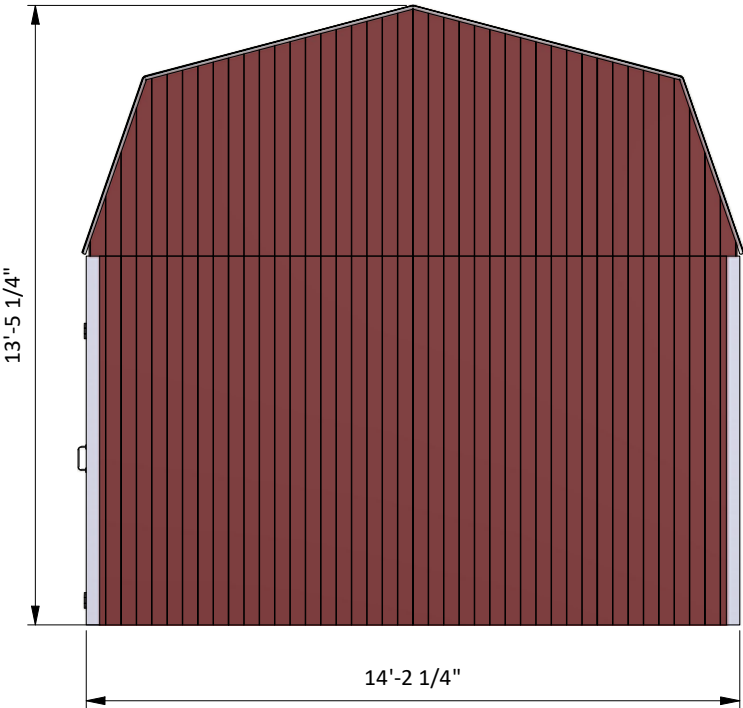
Item	Unit	Qty	Size
Lumber (1 x 4)	pcs	24	8'
Lumber (1 x 4)	pcs	1	10'
Lumber (2 x 2)	pcs	2	6'
Lumber (2 x 4)	pcs	28	6'
Lumber (2 x 4)	pcs	122	8'
Lumber (2 x 4)	pcs	7	12'
Lumber (2 x 4)	pcs	3	14'
Lumber (2 x 6)	pcs	2	8'
Lumber (2 x 8)	pcs	2	10'

Size & Dimensions

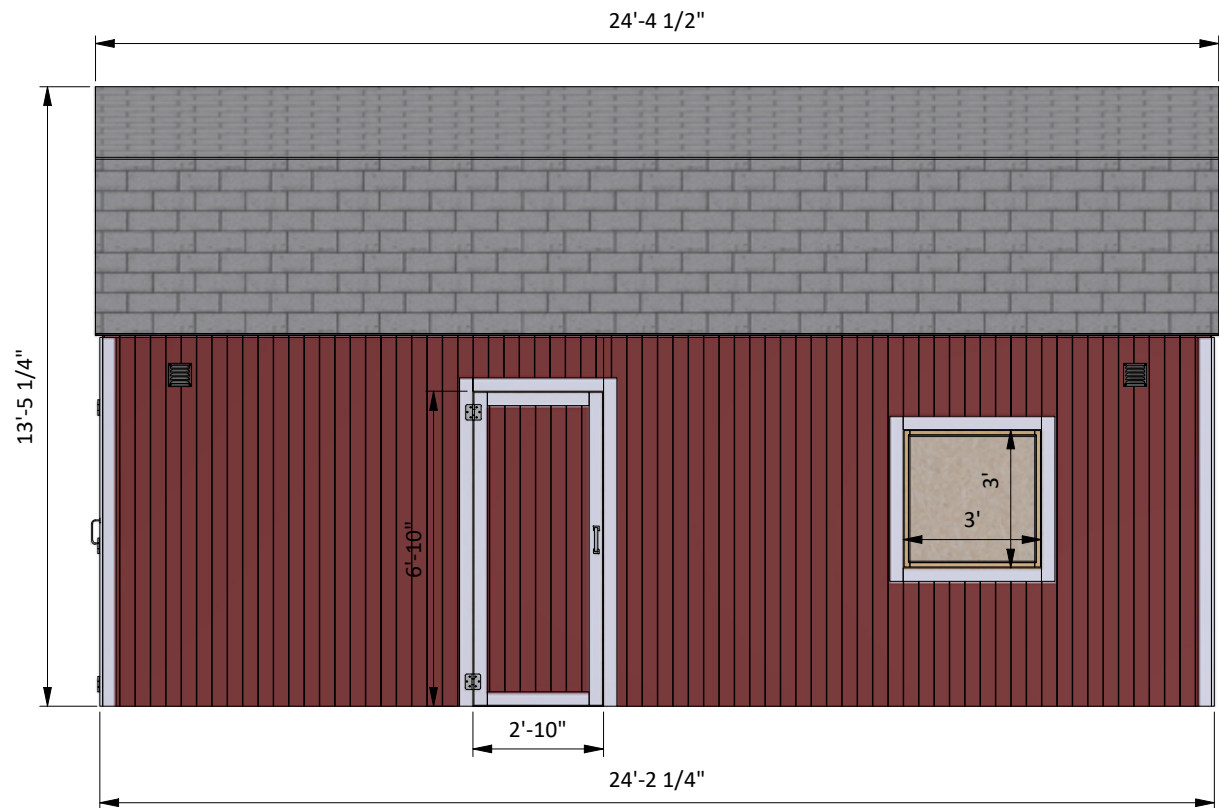
front



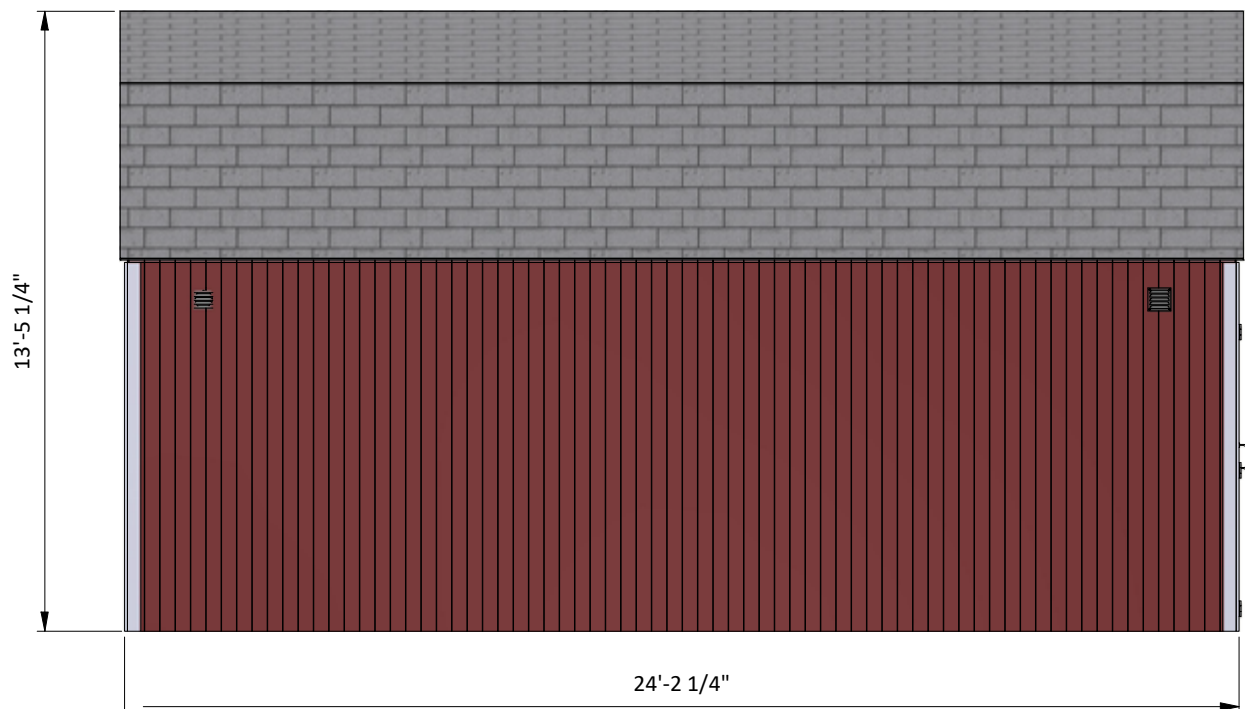
back



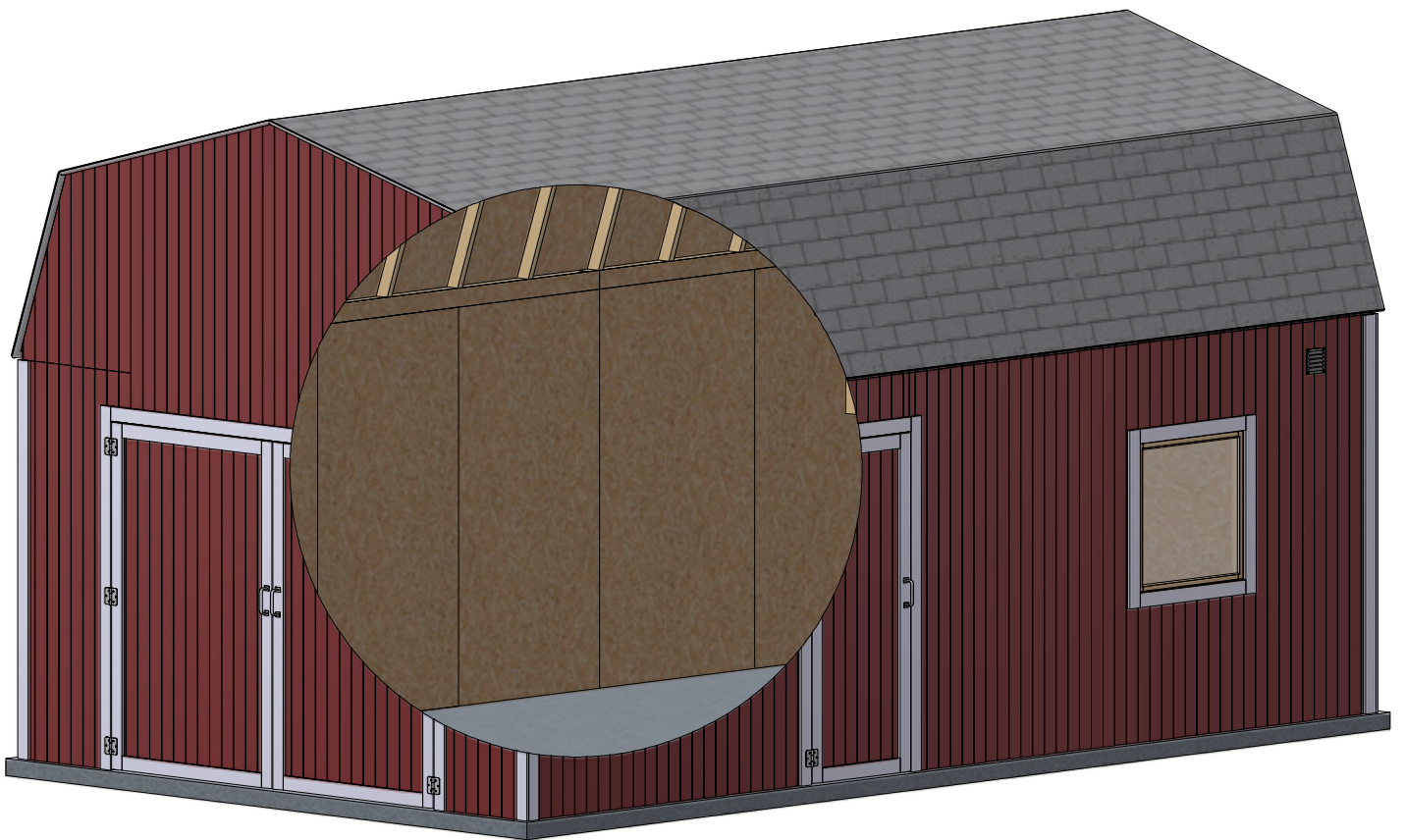
right



left



Interior view



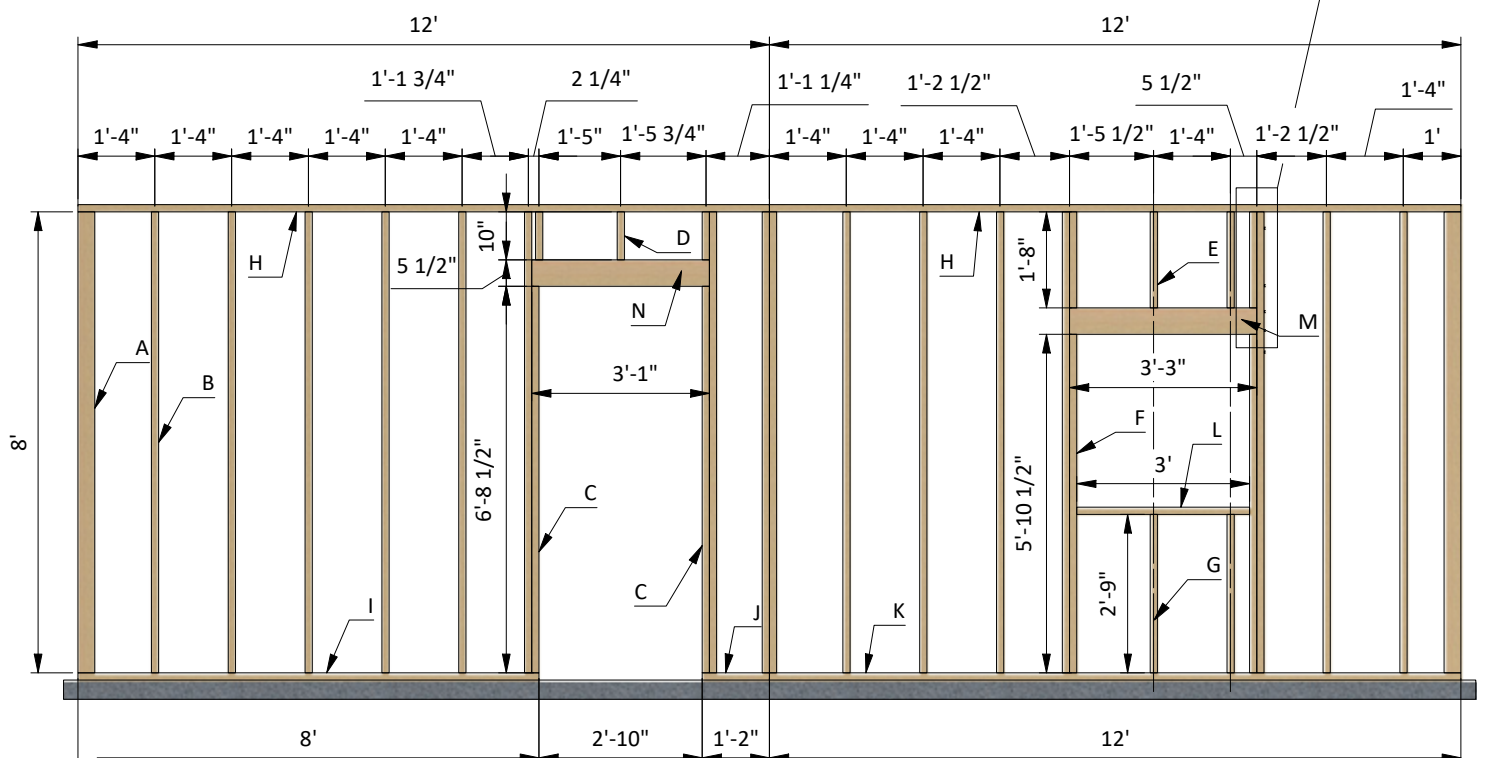
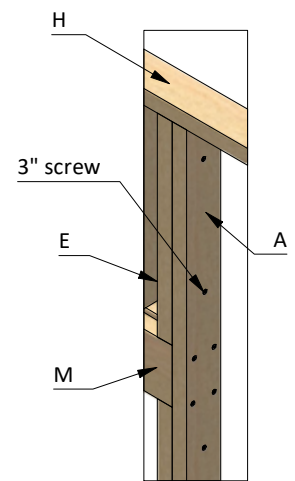
STEP 1

Assemble Right Wall Frame

1.1 Using 2x4, 2x6 and 4x4 lumber, construct right wall frame using the drawing below as a reference. It is divided into two parts for easy assembly. You will need to prepare beams in necessary quantity according to the cutting list below.

1.2 Connect the beams with 3" wood screws.

Pos	Description	Material	Dimension	Qty
A	Stud	4x4	8'	2
B	Stud	2x4	8'	16
C	Stud	2x4	6'-8 1/2"	2
D	Cripple stud	2x4	10"	3
E	Cripple stud	2x4	1'-8"	4
F	Stud	2x4	5'-10 1/2"	2
G	Stud	2x4	2'-9"	2
H	Top beam	2x4	12'	2
I	Bottom beam	2x4	8'	1
J	Bottom beam	2x4	1'-2"	1
K	Bottom beam	2x4	12'	1
L	Rough sill	2x4	3'	1
M	Window header	2x6	3'-3"	2
N	Door header	2x6	3'-1"	2



STEP 2

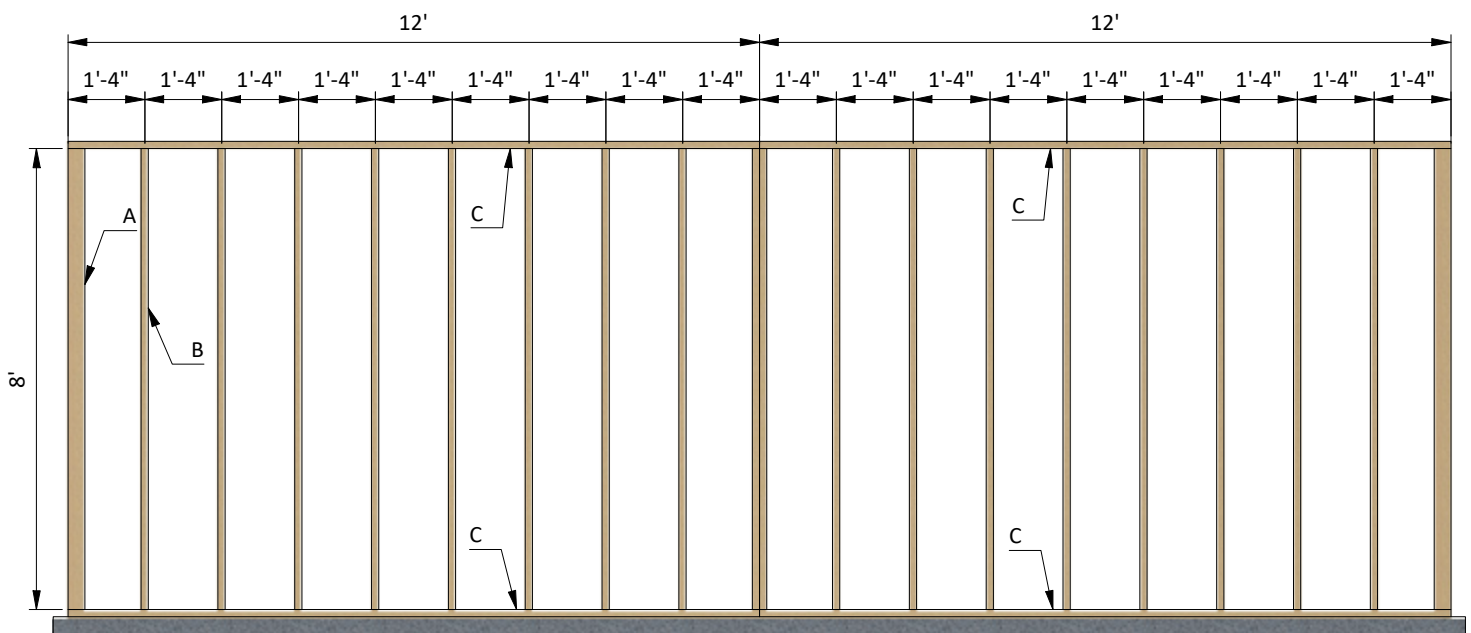
Assemble Left Wall Frame

2.1 Using 2x4 and 4x4 lumber, construct left wall frame using the drawing below as a reference. You will need to prepare beams in necessary quantity according to the cutting list below.

2.2 Connect the beams with 3" wood screws.

2.3 Using a speed square or carpenter's square, check the corners to make sure they are 90°.

Pos	Description	Material	Dimension	Qty
A	Stud	4x4	8'	2
B	Stud	2x4	8'	18
C	Top/bottom beam	2x4	12'	4



STEP 3

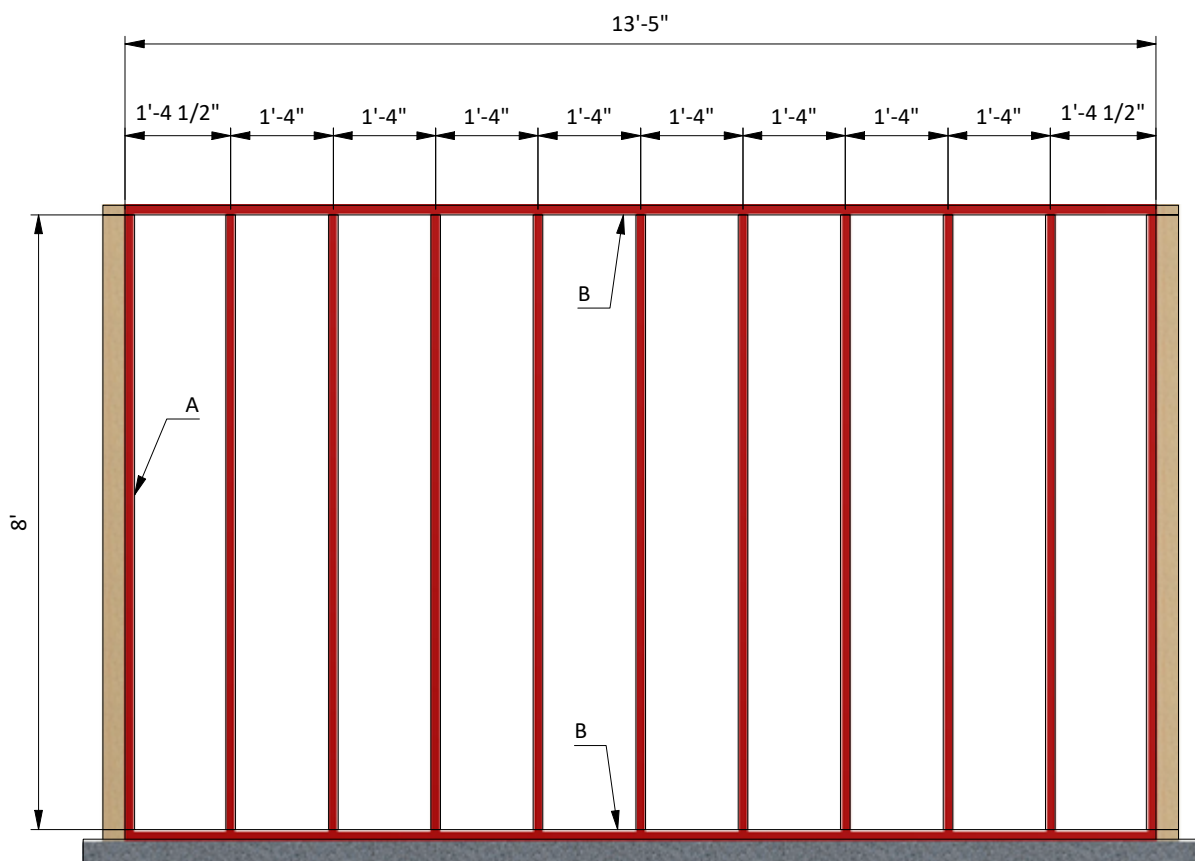
Assemble Back Wall Frame

3.1 Using 2x4 lumber, construct back wall frame using the drawing below as a reference. You will need to prepare beams in necessary quantity according to the cutting list below.

3.2 Connect the beams with 3" wood screws.

3.3 Using a speed square or carpenter's square, check the corners to make sure they are 90°.

Pos	Description	Material	Dimension	Qty
A	Stud	2x4	8'	11
B	Top/bottom beam	2x4	13'-5"	2



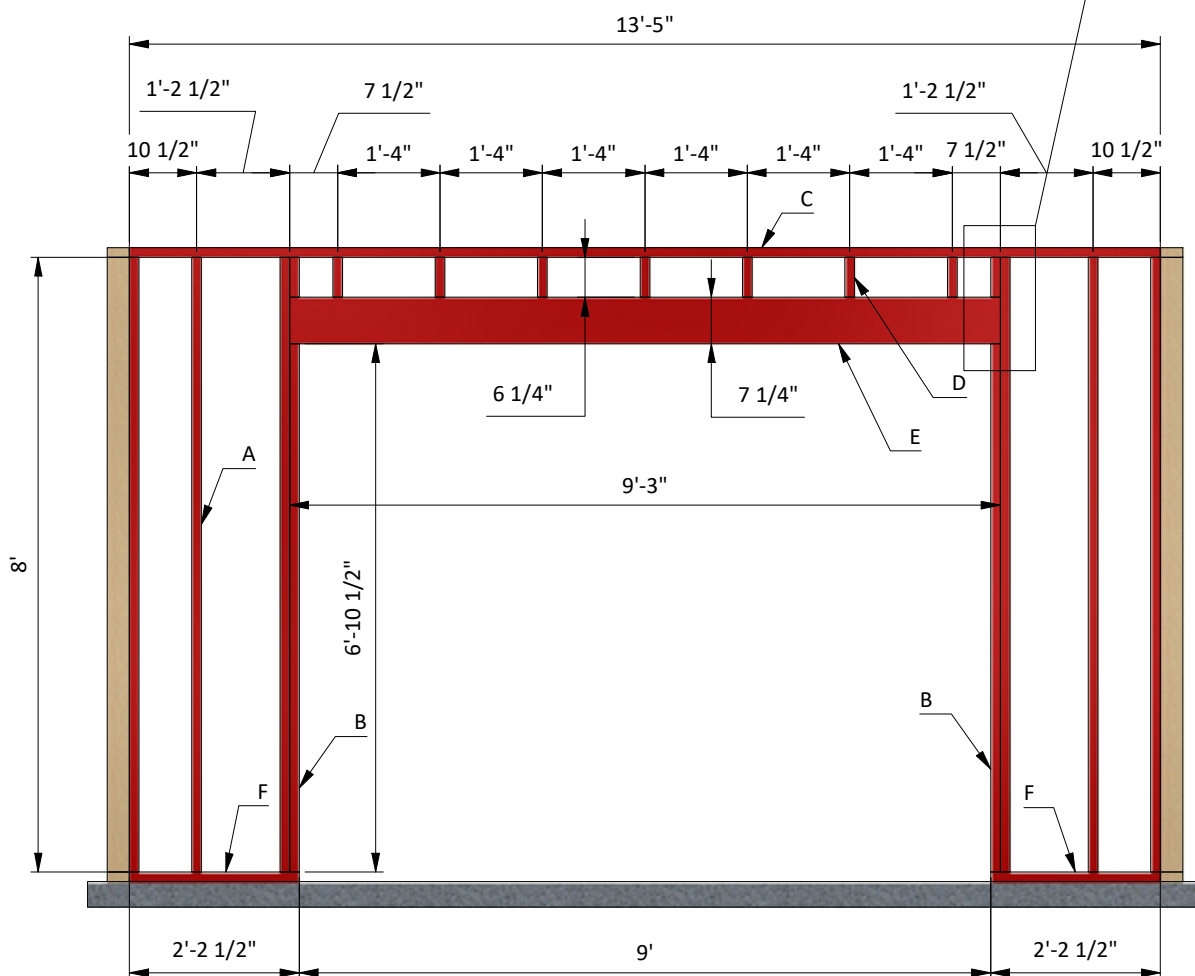
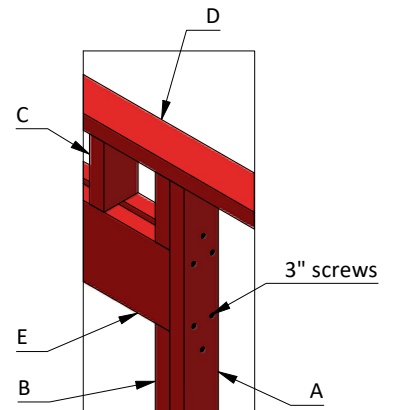
STEP 4

Assemble Front Wall Frame

4.1 Using 2x4 and 2x8 lumber, construct front wall frame using the drawing below as a reference. You will need to prepare beams in necessary quantity according to the cutting list below.

4.2 Connect the beams with 3" wood screws.

Pos	Description	Material	Dimension	Qty
A	Stud	2x4	8'	6
B	Stud	2x4	6'-10 1/2"	2
C	Top beam	2x4	13'-5"	1
D	Cripple stud	2x4	6'-1 1/4"	9
E	Door header	2x8	9'-3"	2
F	Bottom beam	2x4	2'-2 1/2"	2

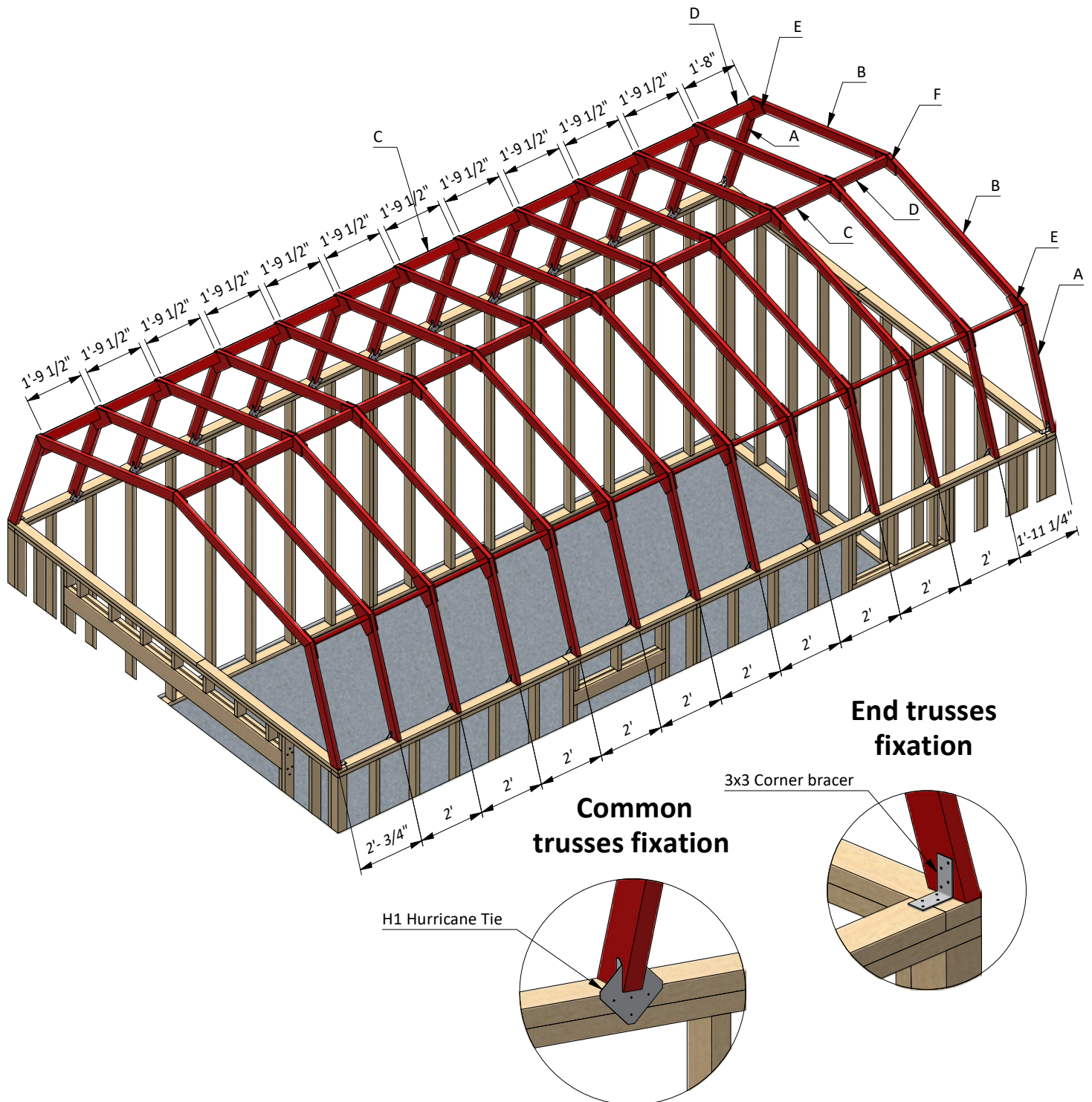


STEP 5

Assemble the Roof Frame

5.1 Using 2x4 lumber and 1/2" OSB prepare thirteen trusses according to the drawing and cutting list below. Connect trusses with blocking boards.

5.2 Fix the trusses to the top beams with 2" and 5" wood screws, H1 Hurricane Tie and 3x3 corner braces.



STEP 6

Garage's Roof Sheathing Installation

6.1 Prepare metal drip edge with 6" width. You will need 90' to cover all the perimeter.

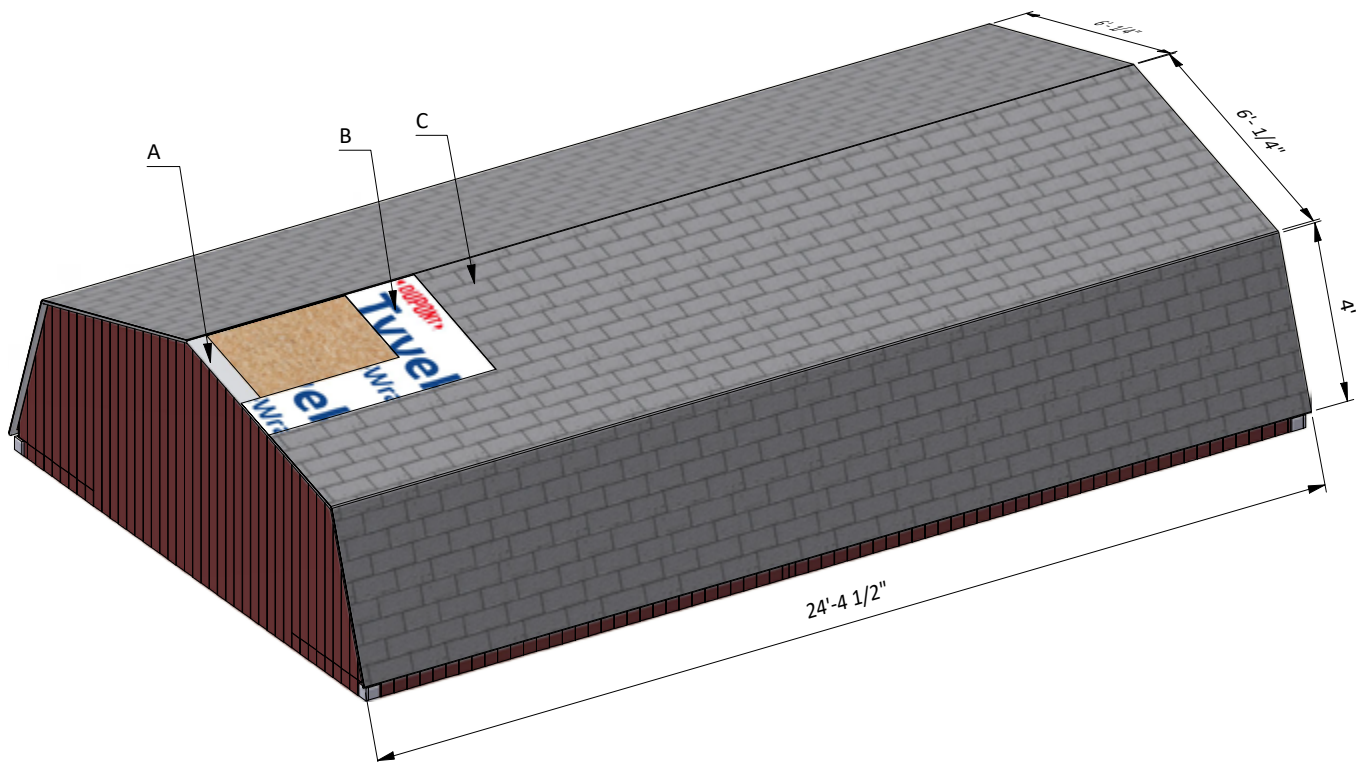
6.2 Place the drip edge down, aligning it to the OSB edge. Use 2" nails to secure the first drip edge. When you place the next drip edge piece, it should overlap the first by an inch.

6.3 You will need 500 Sq Ft of building paper and asphalt shingle roofing.

6.4 Cover the OSB and drip edge with building paper. Try to install sheets with 1" overlapping. Use 2" nails to secure the sheets.

6.5 Install asphalt shingle roofing using an industrial stapler.

Pos	Description	Material	Dimension	Qty
A	Metal drip edge	6"	-	90'
B	Roof sheathing	Building paper	-	500 square ft
C	Roof sheathing	Asphalt shingle roofing	-	500 square ft



STEP 7

Assemble and Install Garage Front Door

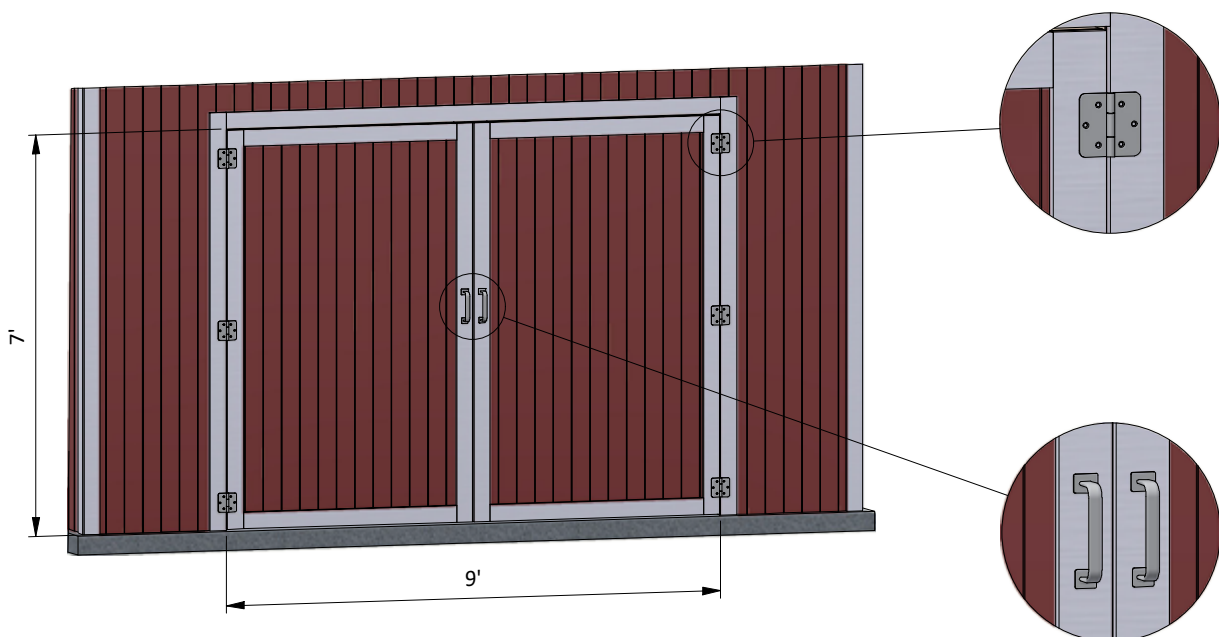
7.1 Build the door frame using 2x4 lumber. For each half-gate you will need two boards cut to 6'-11 1/2" that will be the vertical girts, two boards cut to 3'-10 3/4" that will be the horizontal girts and one board cut to 7'-5 1/2" that will be the cross brace.

7.2 Prepare the 11/32" plywood siding for outer sheathing. You will need to cut one 4' x 6'-11 1/2" sheet and one 5 3/4" x 6'-11 1/2" for the door according to the drawing.

7.3 Using 1x4 lumber, prepare trims and install with 2" wood screws to the walls. You will need to prepare boards in necessary quantity according to the cutting list below

7.4 Install six 4" door hinges using 1" wood screws .
Finish the door installation by attaching two 6" door pulls.

Pos	Description	Material	Dimension	Qty
A	Girt	2x4	6'-11 1/2"	4
B	Girt	2x4	3'-10 3/4"	4
C	Cross brace	2x4	7'-5 1/2"	2
D	Door sheathing	11/32" plywood	4' x 6'-11 1/2"	2
E	Door sheathing	11/32" plywood	5 3/4" x 6'-11 1/2"	2
F	Door trim	1x4	3'-10 3/4"	4
G	Door trim	1x4	6'-11 1/2"	4



STEP 8

Assemble and Install Garage Side Door

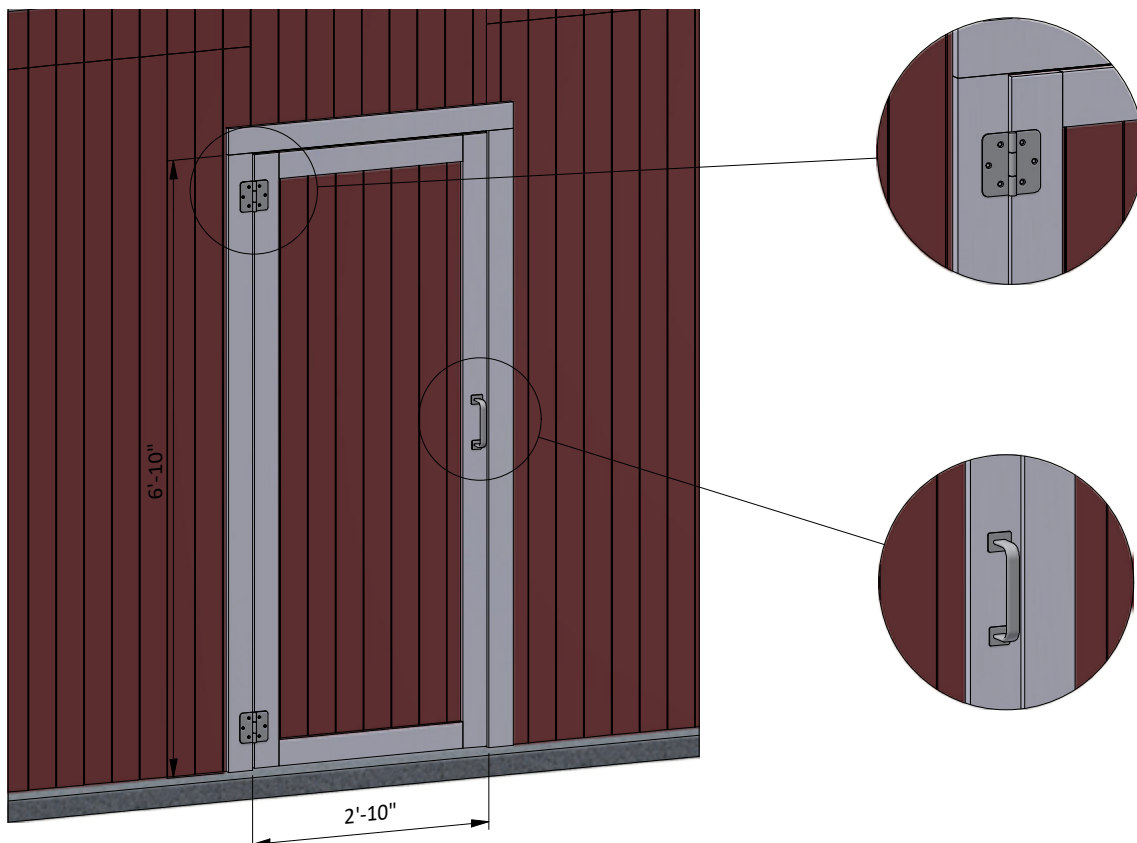
8.1 Build the door frame using 2x4 lumber. You will need two boards cut to 6'-9 1/2" that will be the vertical girts, two boards cut to 2'-2 1/2" that will be the horizontal girts and one board cut to 6'-7" that will be the cross brace.

8.2 Prepare the 11/32" plywood siding for outer sheathing.
You will need to cut one 2'-9 1/2" x 6'-9 1/2" sheet for the door according to the drawing.

8.3 Using 1x4 lumber, prepare trims and install with 2" wood screws to the walls.
You will need to prepare boards in necessary quantity according to the cutting list below

8.4 Install two 4" door hinges using 1" wood screws.
Finish the door installation by attaching two 6" door pull.

Pos	Description	Material	Dimension	Qty
A	Girt	2x4	6'-9 1/2"	2
B	Girt	2x4	2'-2 1/2"	2
C	Cross brace	2x4	6'-7"	1
D	Door sheathing	11/32" plywood	2'-9 1/2" x 6'-9 1/2"	1
E	Door trim	1x4	2'-2 1/2"	2
F	Door trim	1x4	6'-9 1/2"	2



STEP 9

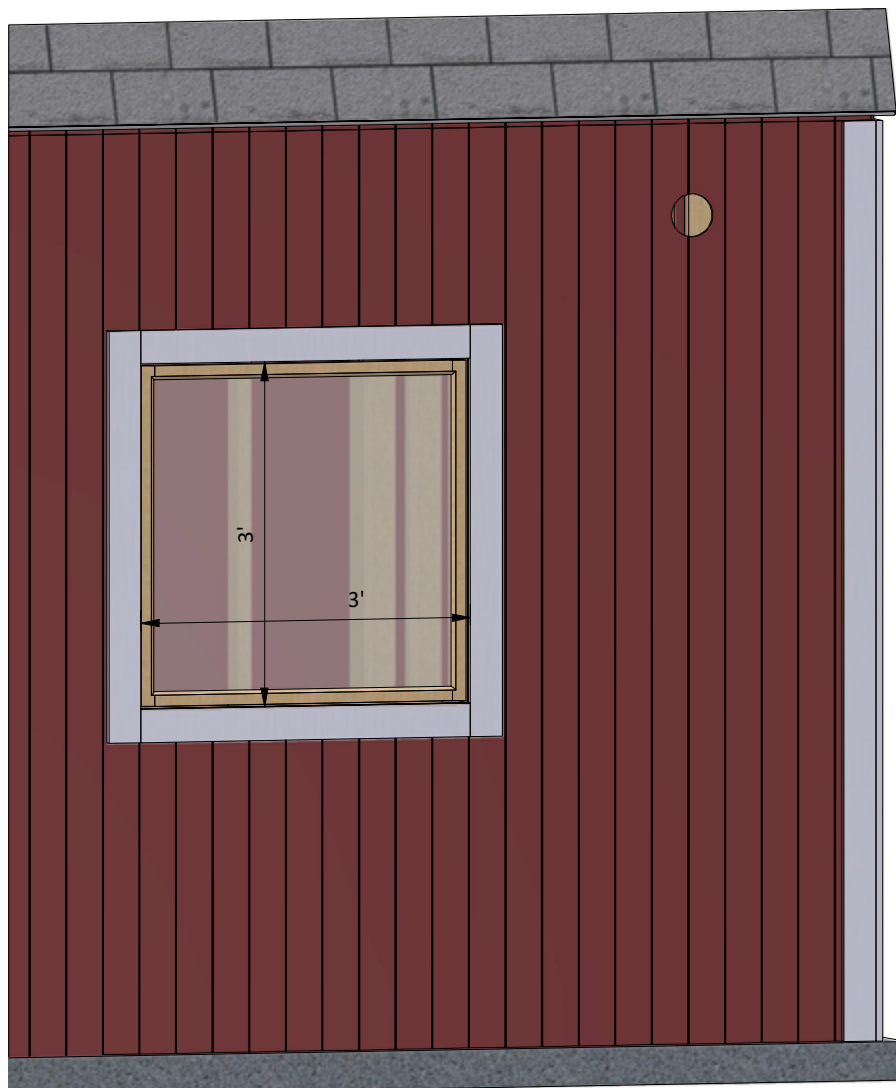
Window Installation for the Right Wall

9.1 Using 2x2 lumber, assemble the outer frame for the window as shown in the drawing below. You will need four boards cut to 2'-11 1/2" that will be the vertical and horizontal girts. Cut the recesses in each beam for splicing connection and mill a recess for the glass.

9.2 Prepare and install glass into inner frame groove and fasten it by window beading from four sides. Use 1/2" galvanized nails.

9.3 Insert window into side wall openings and connect them with 3" wood screws to the wall beams.

Pos	Description	Material	Dimension	Qty
A	Vertical girts	2x2	2'-11 1/2"	2
B	Top/bottom beam	2x2	2'-11 1/2"	2
C	Glass	1/8"	2'-9 1/4" x 2'-9 1/4"	1
D	Window beading			12ft



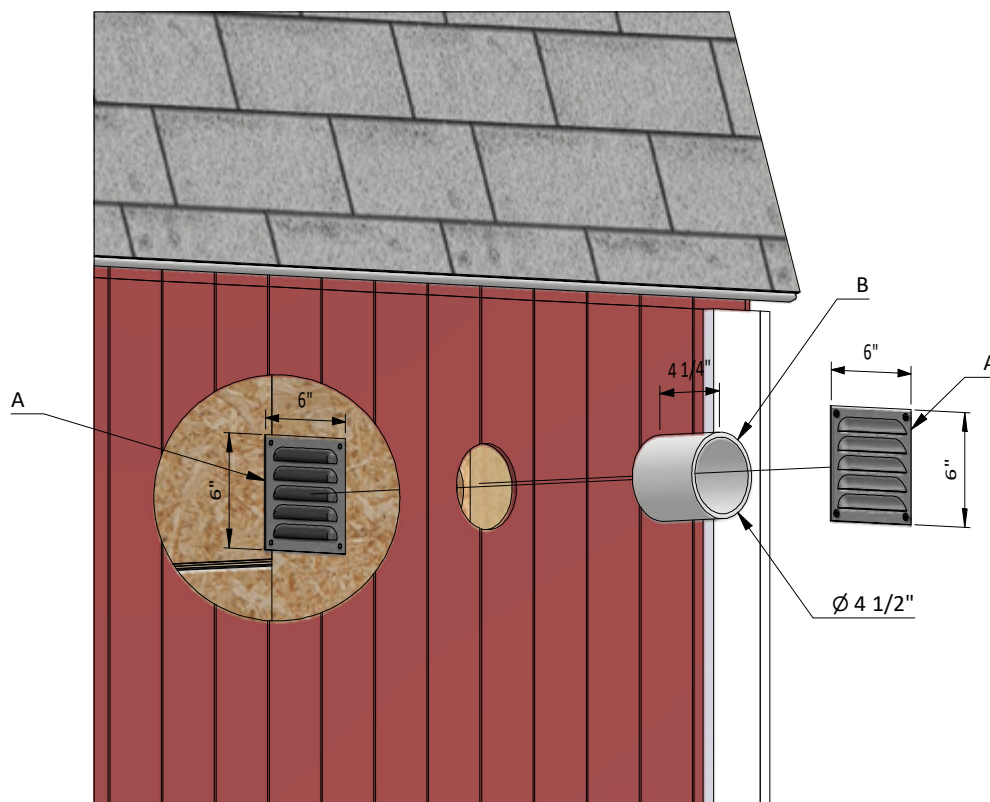
STEP 10

Install the Ventilation Louver

10.1 Insert the 4" ventilation pipe to isolate the inner space between walls.

10.2 Fix the louvers to the outer and inner walls, completely overlaying the opening.

Pos	Description	Material	Dimension	Qty
A	Ventilation louver	26 Gauge galvanized steel	6" x 6"	8
B	Ventilation pipe	4" pipe	4 1/4"	4



STEP 11

Final Touches

Now that your garage is all done, you are ready to decorate it any way you want using your favorite paint, stain, or preservative.



Free vs. Premium Plan: What's the Difference?

We offer both free and premium versions of our detailed shed plans, designed to fit your needs and budget. Check out the table below to see the key differences and choose the plan that's right for you:

Features	Free Plan	Premium Plan
Steps Count	11	19
Illustrations per Step	Limited	Every Step
Print Ready Format	X	✓
Step-by-Step Instructions	Basic	Comprehensive
Full Materials & Cutting List	X	✓
Additional Illustrations	X	✓
Additional Blueprints	X	✓
Tools List	X	✓
Fastening Elements List	X	✓
Technical Support	X	✓

[Try Premium Risk-Free](#)

60-day refund policy with no questions asked.



For more great **HOW-TO** plans please visit: <https://craft.camp>

Copyright

The text and illustrations that appear here are the exclusive property of craft.camp and are protected by federal copyright laws. The duplication, sale or distribution of any portion of these plans without prior written consent from the original designer will be subject to the appropriate penalties for copyright infringement. Sharing this plan on the web is only permitted with an indicated original source: <https://craft.camp>