



12' x 24' Lean to Carport Plan

Free vs. Premium Plan: What's the Difference?

We offer both free and premium versions of our detailed shed plans, designed to fit your needs and budget. Check out the table below to see the key differences and choose the plan that's right for you:

Features	Free Plan	Premium Plan
Steps Count	10	20
Illustrations per Step	Limited	Every Step
Print Ready Format	X	✓
Step-by-Step Instructions	Basic	Comprehensive
Full Materials & Cutting List	X	✓
Additional Illustrations	X	✓
Additional Blueprints	X	✓
Tools List	X	✓
Fastening Elements List	X	✓
Technical Support	X	✓

Try Premium Risk-Free

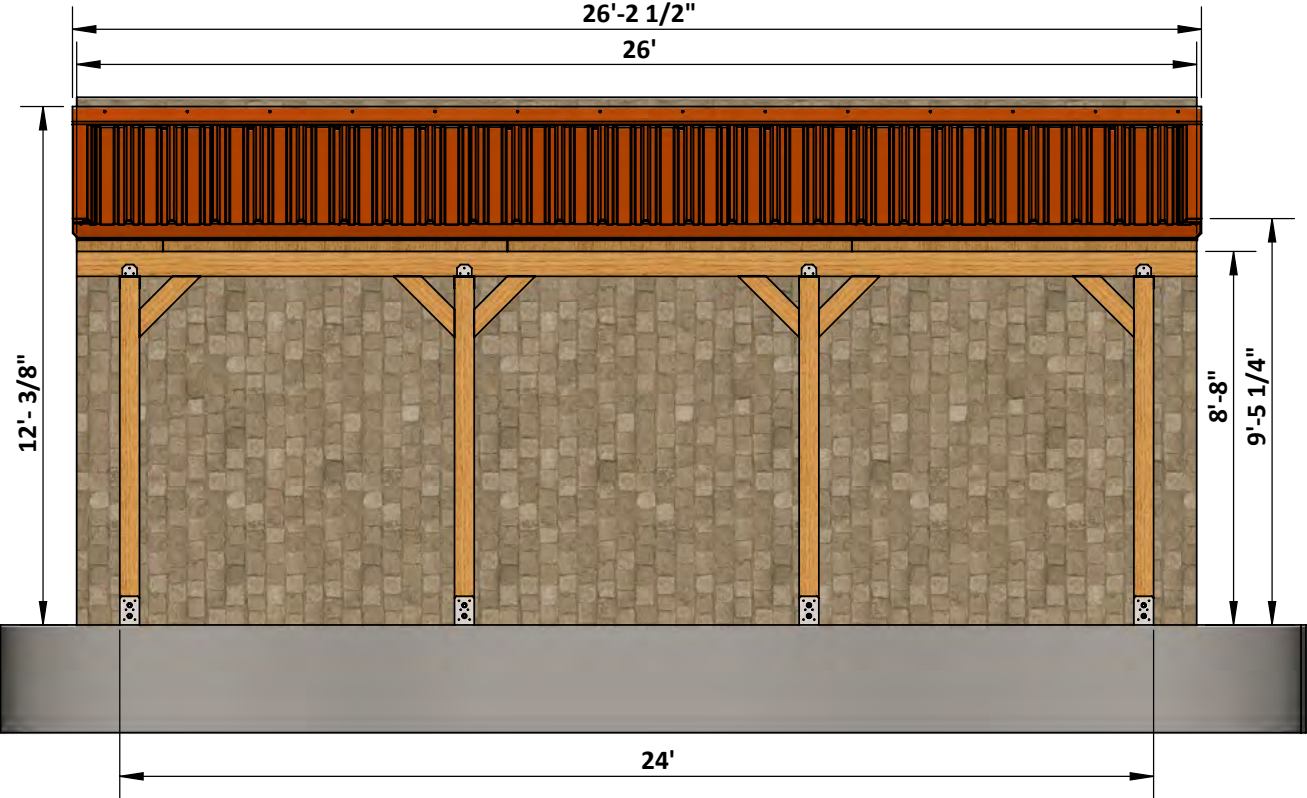
30-day refund policy with no questions asked.

12' x 24' Lean to Carport Shopping List

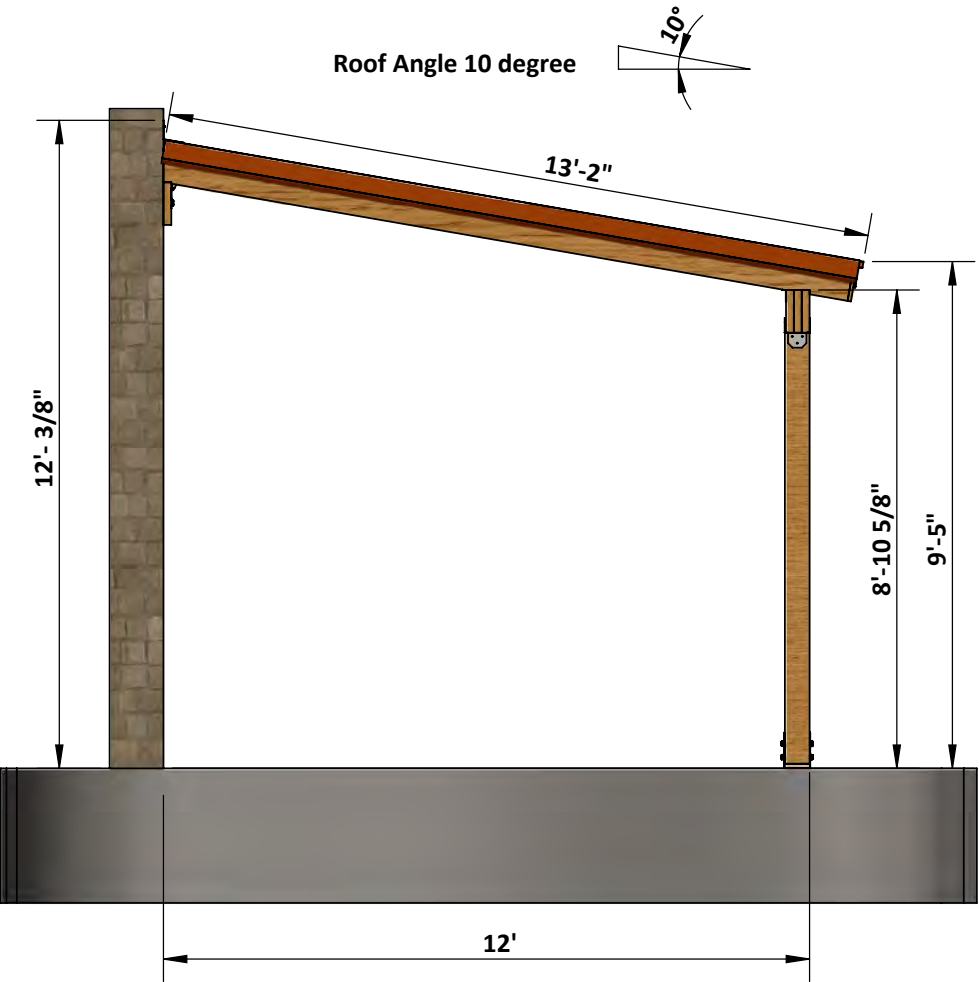
Lumber (6 x 6)	Pcs	4	8'
Lumber (6 x 6)	Pcs	2	6'
LVL (2 x 10)	Pcs	4	26'
Lumber (2 x 8)	Pcs	14	14'
Common Wood Board (1 x 8)	Pcs	4	8'
OSB 1/2"	Pcs	14	8' x 4'
Corrugated metal roof panel	Square ft	339	26' x 13'-2"

Size & Dimensions

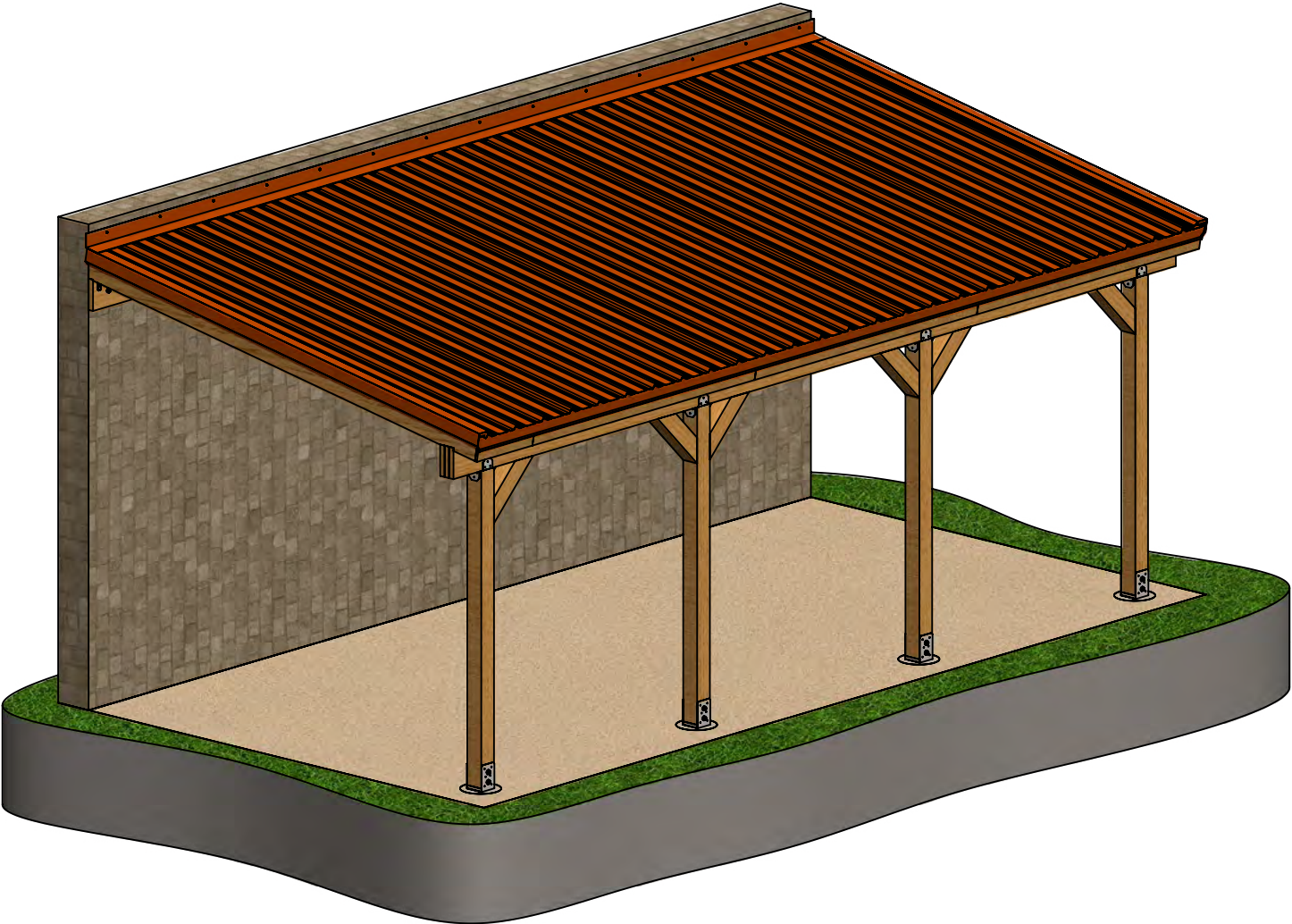
Front



Side



Model View



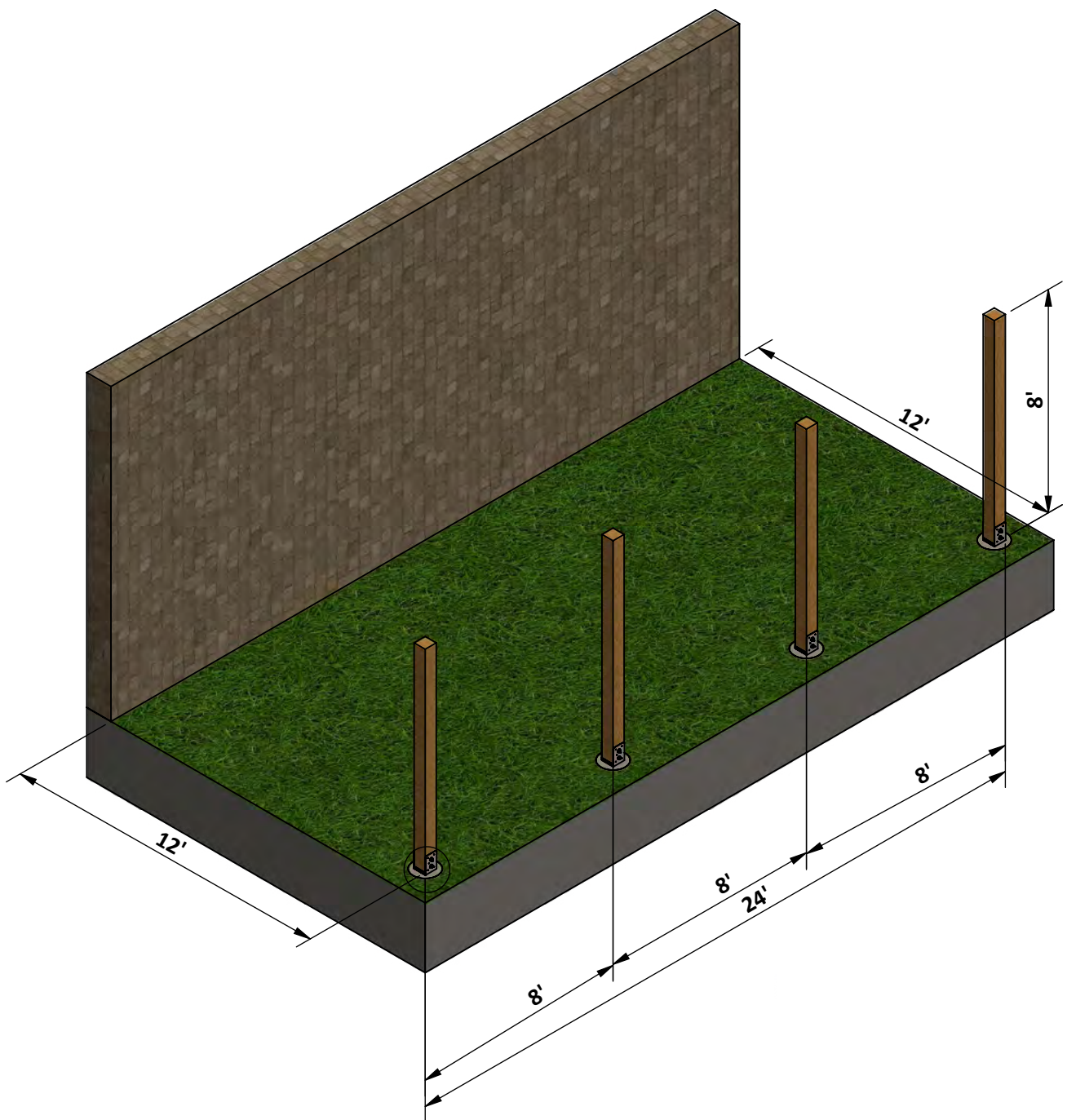
STEP 1

Post Installation

1.1 Install the posts using 6 x 6 lumber.

1.2 Secure the post with metal post base with 3" wood screws and Hexabolt

1-8x8x2.5,hexanut1-8,washer.



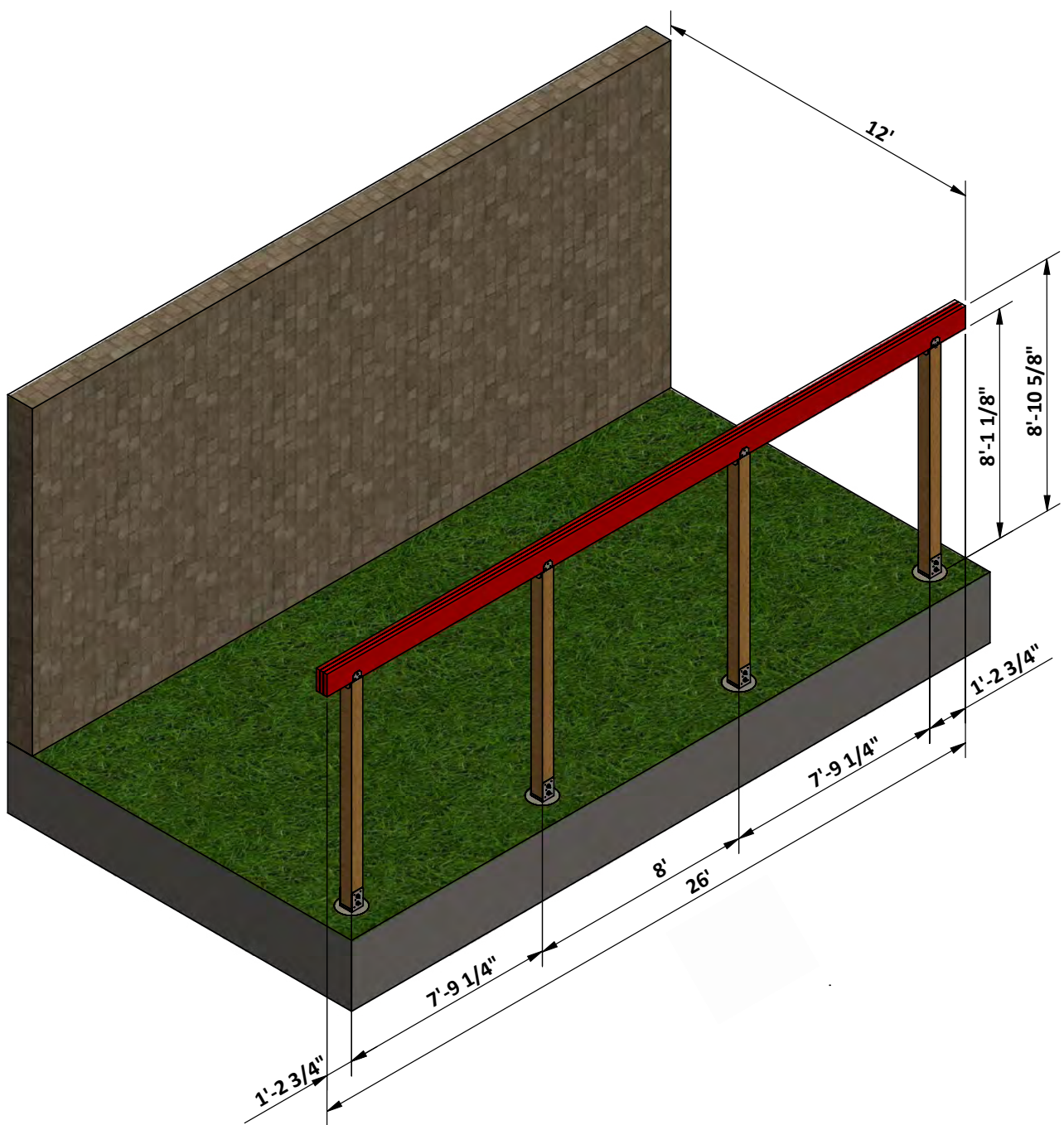
STEP 2

Headers on The Posts Assembly

2.1 Assemble the headers on the posts using 3 x 2 x 10 LVL secure with 5"

screws.

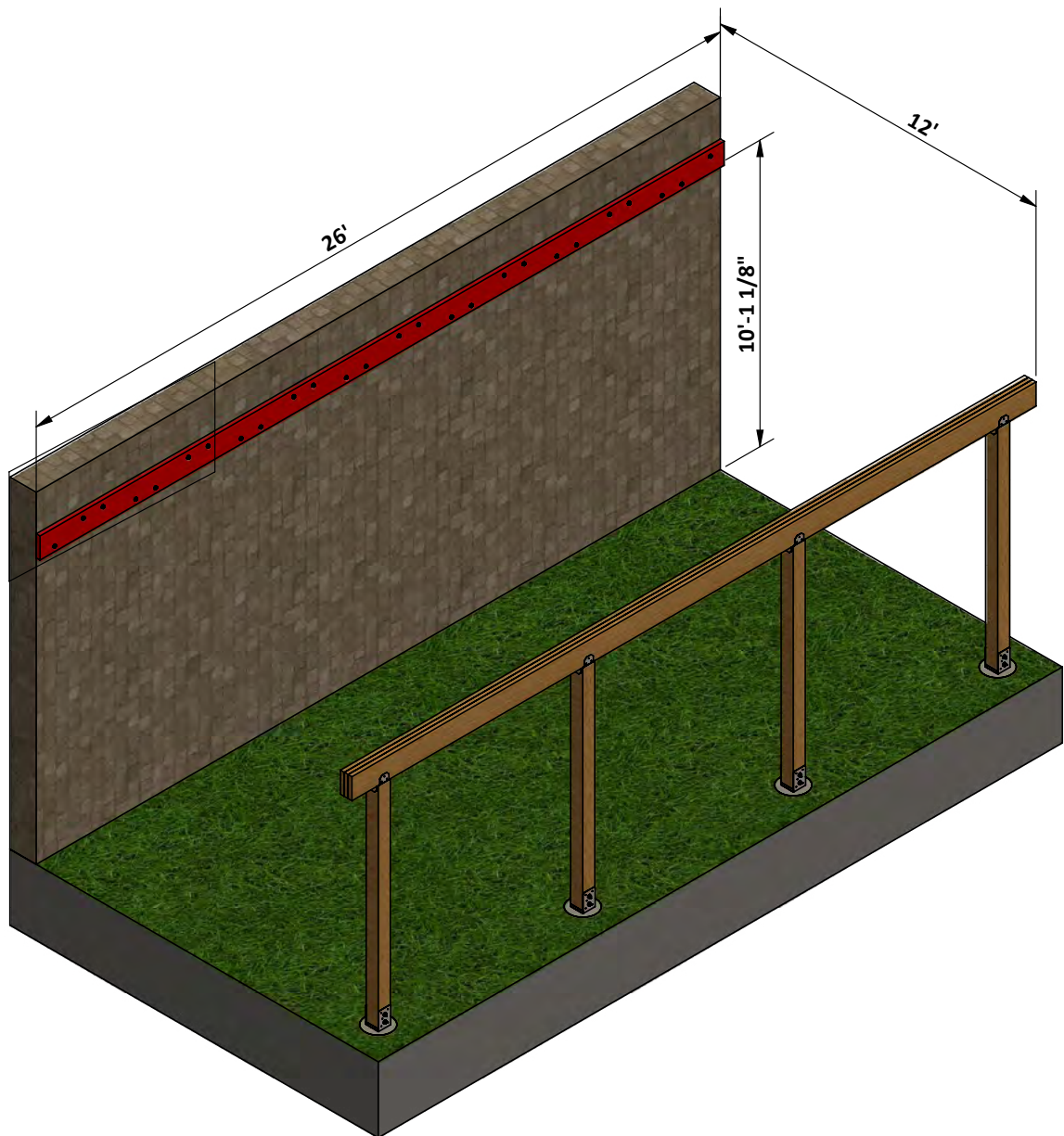
2.2 Secure all the Headers with post cap using 5" wood screws.



STEP 3

Wall Beam Assembly

3.1 Assemble wall beam using 2 x 10 LVL and secure with 1/2"x 5 1/2" hex nut wedge expansion anchors.

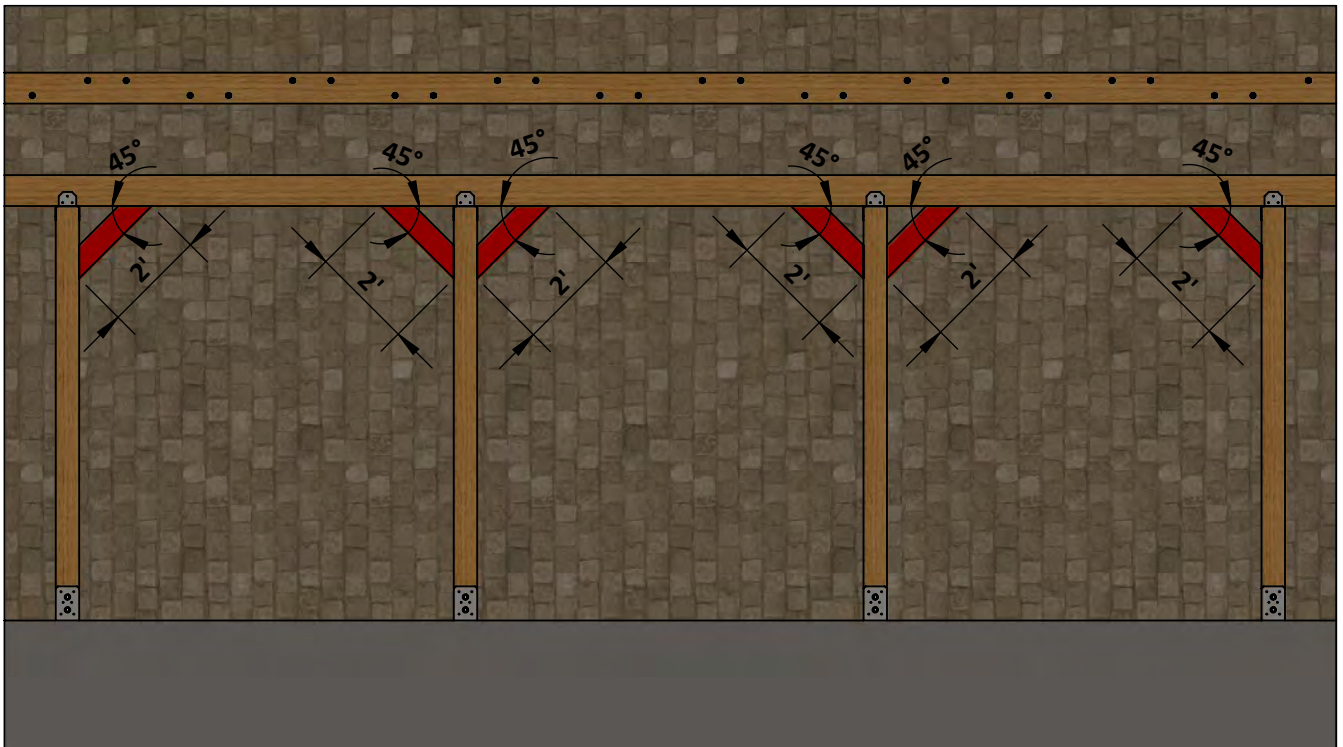


STEP 4

Cross Braces assembly

4.1 Assemble the cross braces using 6 x 6 lumber

4.2 Secure the cross braces with 5" wood screws.



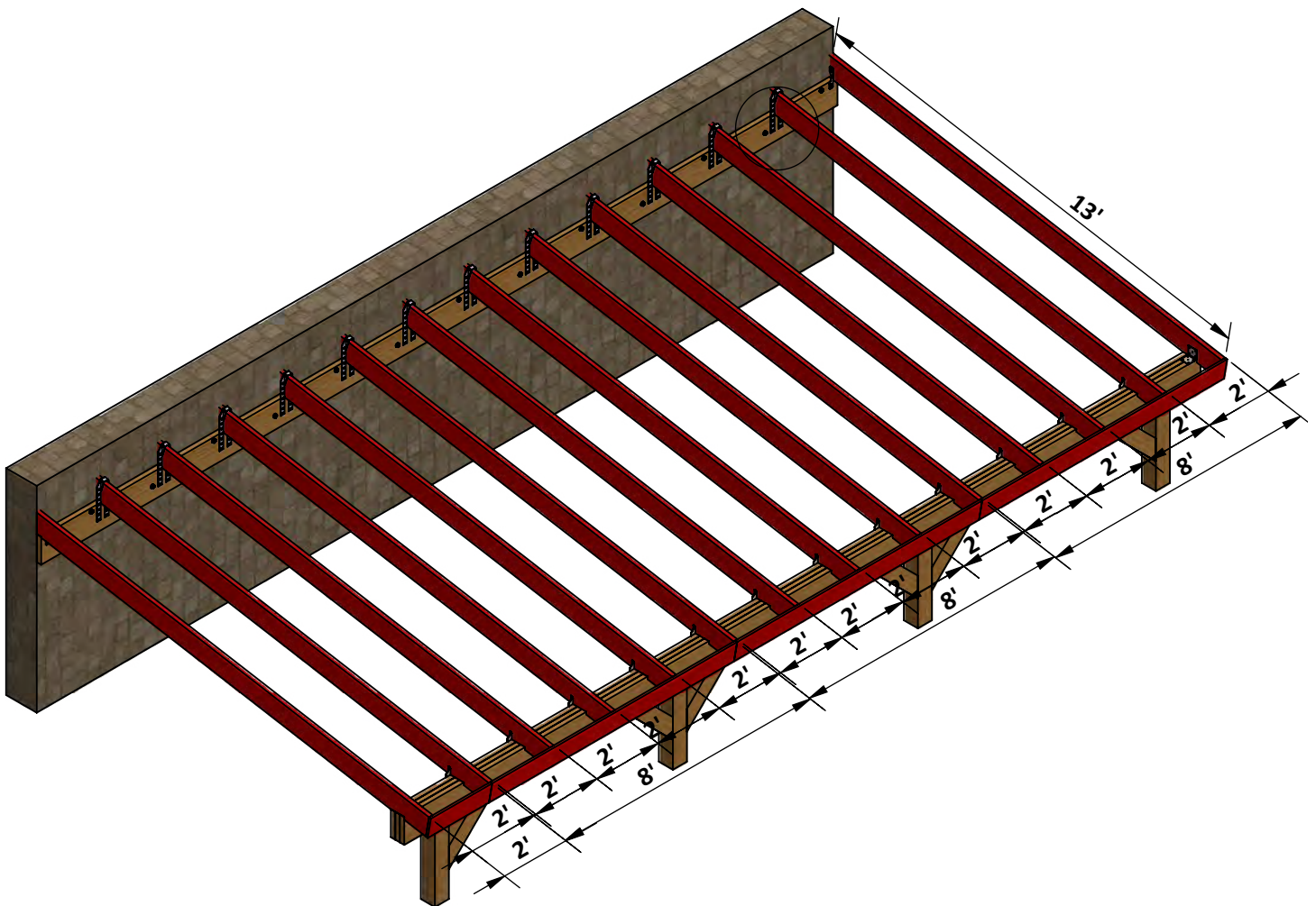
STEP 5

Roof Assembly

5.1 Assemble the rafters using 2 x 8 Lumber and fascias using 1 x 8 common wood board.

5.2 Secure rafters with hurricane tie H16, Hurricane tie 2.5A, Hurricane tie 1A and corner bracer LS50 with 1" wood screws.

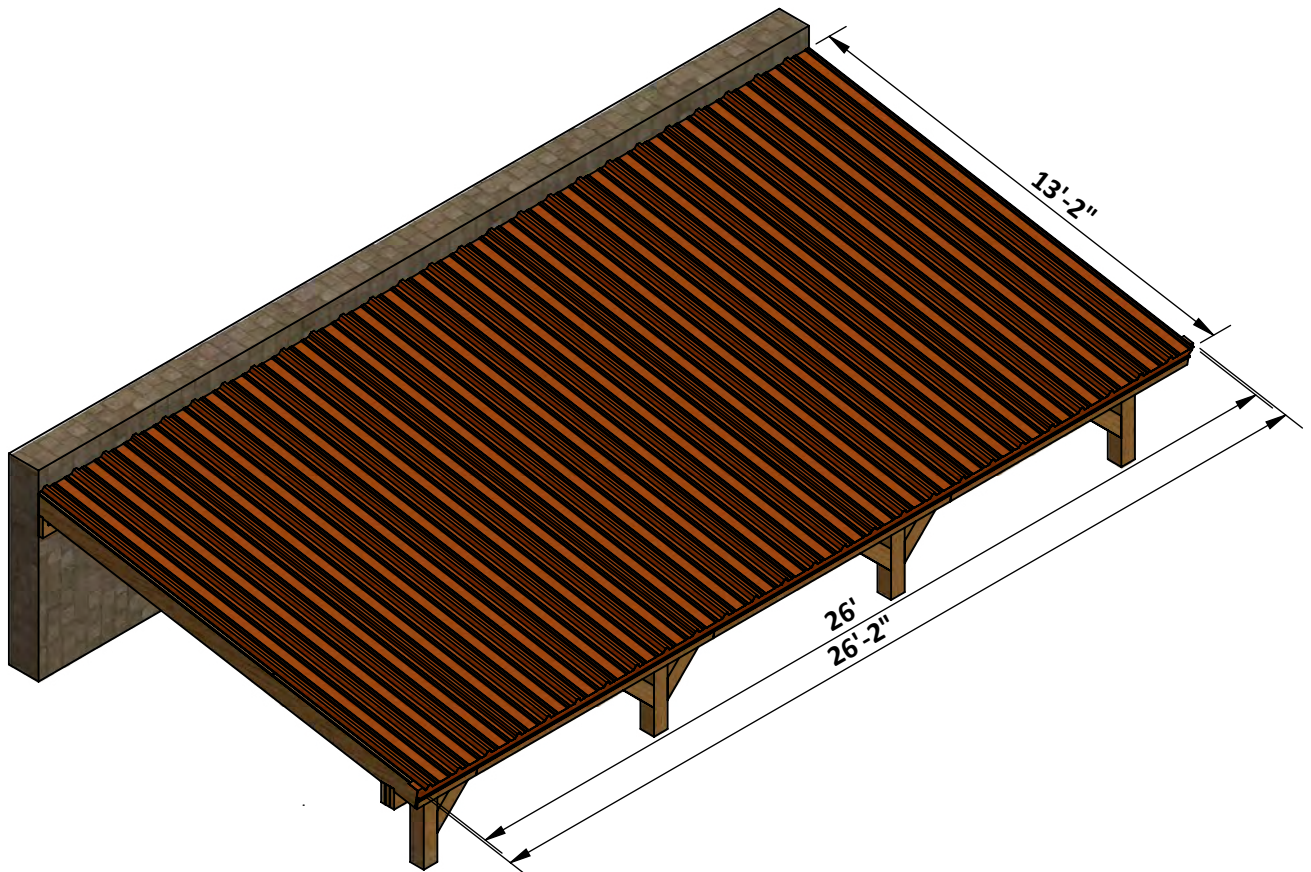
5.3 Secure the fascias with 2" wood screws.



STEP 6

Metal Roof Assembly

- 6.1 Assemble the Corrugated metal roof panel in 26' x 13'-2" roof area.
- 6.2 Assemble the eave flashing EF-3 according to node 1 below.
- 6.3 Assemble the gable rake GR-6 according to node 2 below.
- 6.4 Assemble the end wall flashing EW-1 according to node 3 below.
- 6.5 Secure the Corrugated metal roof panels, eave flashing, gable rake and end wall flashing with #9x1-1/2 screw and #12x1-1/2 screw
- 6.6 Add exterior sealant between wall and flashing.



STEP 7

Final Touches

Now that your carport is all done, you are ready to decorate it any way you want using your favorite paint, stain, or preservative.



Free vs. Premium Plan: What's the Difference?

We offer both free and premium versions of our detailed shed plans, designed to fit your needs and budget. Check out the table below to see the key differences and choose the plan that's right for you:

Features	Free Plan	Premium Plan
Steps Count	10	20
Illustrations per Step	Limited	Every Step
Print Ready Format	X	✓
Step-by-Step Instructions	Basic	Comprehensive
Full Materials & Cutting List	X	✓
Additional Illustrations	X	✓
Additional Blueprints	X	✓
Tools List	X	✓
Fastening Elements List	X	✓
Technical Support	X	✓

Try Premium Risk-Free

30-day refund policy with no questions asked.



For more great **HOW-TO** plans please visit: <https://craft.camp>

Copyright

The text and illustrations that appear here are the exclusive property of craft.camp and are protected by federal copyright laws. The duplication, sale or distribution of any portion of these plans without prior written consent from the original designer will be subject to the appropriate penalties for copyright infringement. Sharing this plan on the web is only permitted with an indicated original source: <https://craft.camp>