



Free 10'x12' Office Shed Plan

Free vs. Premium Plan: What's the Difference?

We offer both free and premium versions of our detailed shed plans, designed to fit your needs and budget. Check out the table below to see the key differences and choose the plan that's right for you:

Features	Free Plan	Premium Plan
Steps Count	13	33
Illustrations per Step	Limited	Every Step
Print Ready Format	X	✓
Step-by-Step Instructions	Basic	Comprehensive
Full Materials & Cutting List	X	✓
Additional Illustrations	X	✓
Additional Blueprints	X	✓
Tools List	X	✓
Fastening Elements List	X	✓
Technical Support	X	✓

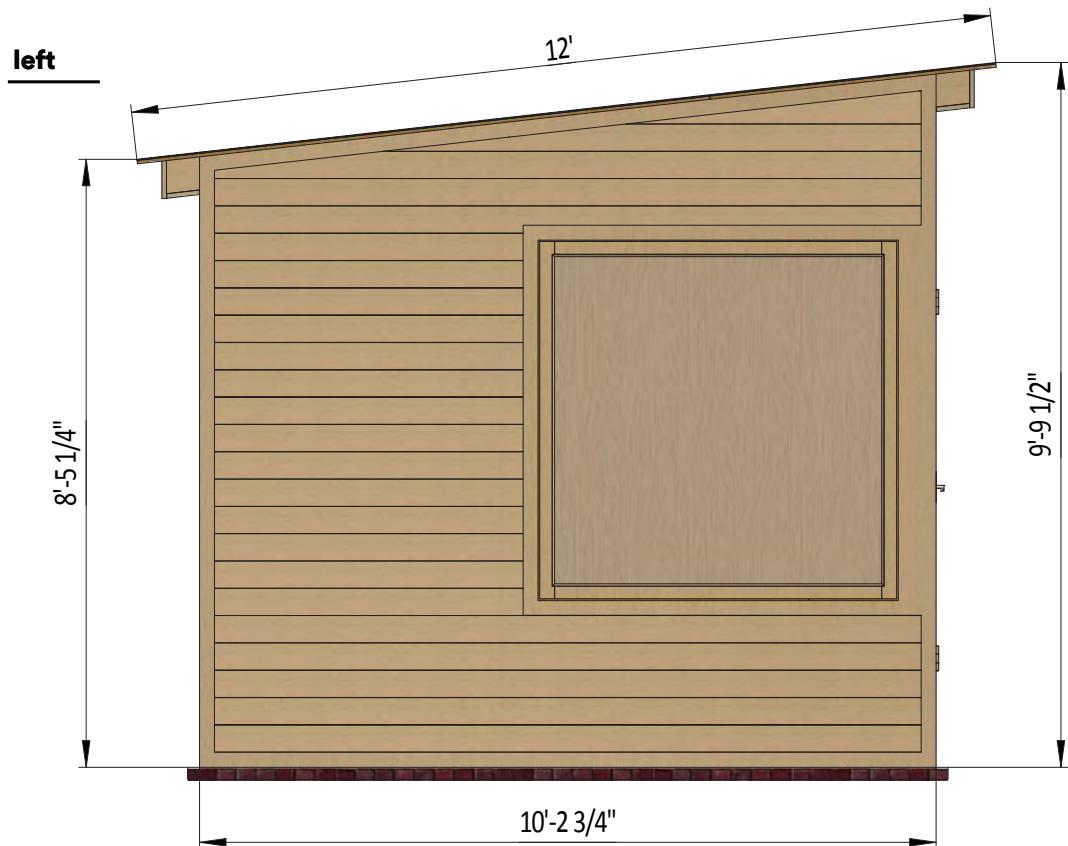
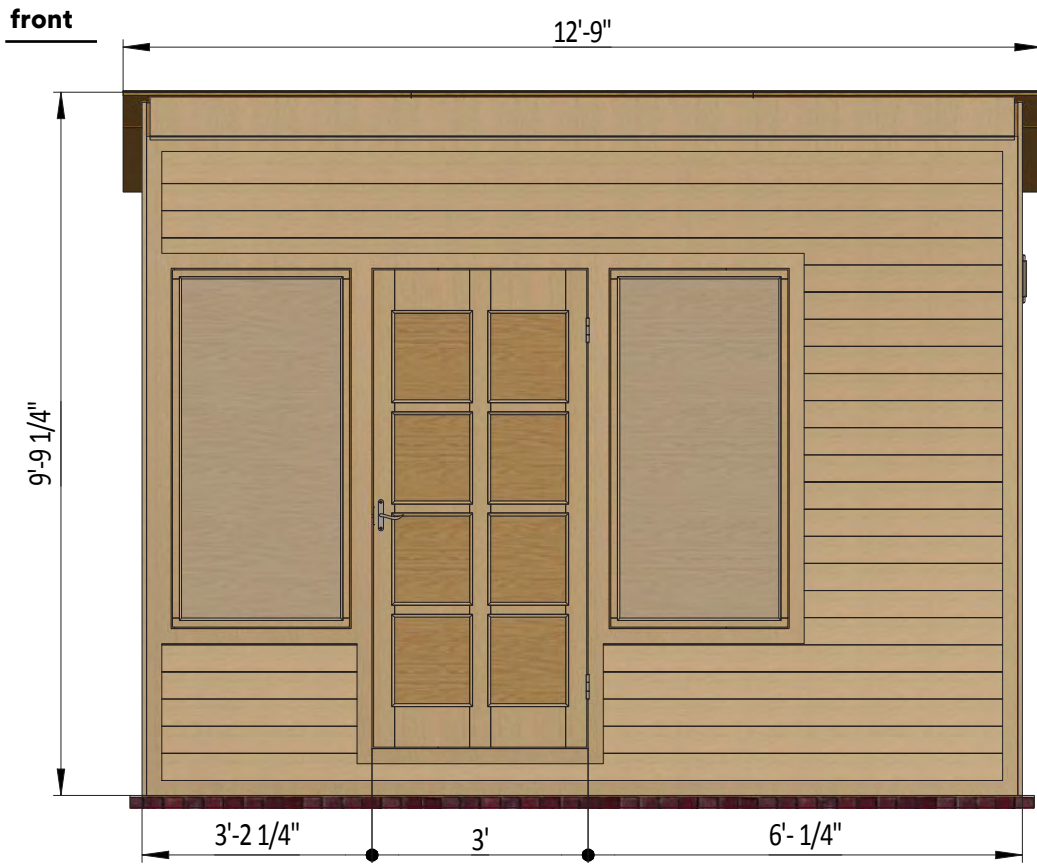
[Try Premium Risk-Free](#)

60-day refund policy with no questions asked.

10' x 12' office shed shopping list

Materials	Unit	Qty	Size
Lumber (1 x 4)	pcs	16	8'
Lumber (1 x 4)	pcs	6	10'
Lumber (1 x 4)	pcs	2	12'
Lumber (1 x 6)	pcs	3	10'
Lumber (2 x 4)	pcs	55	8'
Lumber (2 x 4)	pcs	5	10'
Lumber (2 x 4)	pcs	5	12
Lumber (2 x 6)	pcs	15	8'
Lumber (2 x 6)	pcs	9	12'
Lumber (2 x 8)	pcs	1	6'
Lumber (2 x 8)	pcs	10	10'
Lumber (2 x 8)	pcs	2	12'
Lumber (4 x 4)	pcs	4	8'
OSB (1/2")	pcs	7	4' x 8'
Plywood (3/4")	pcs	4	4' x 8'
Plywood siding plybead panel (11/32")	pcs	14	4' x 8'

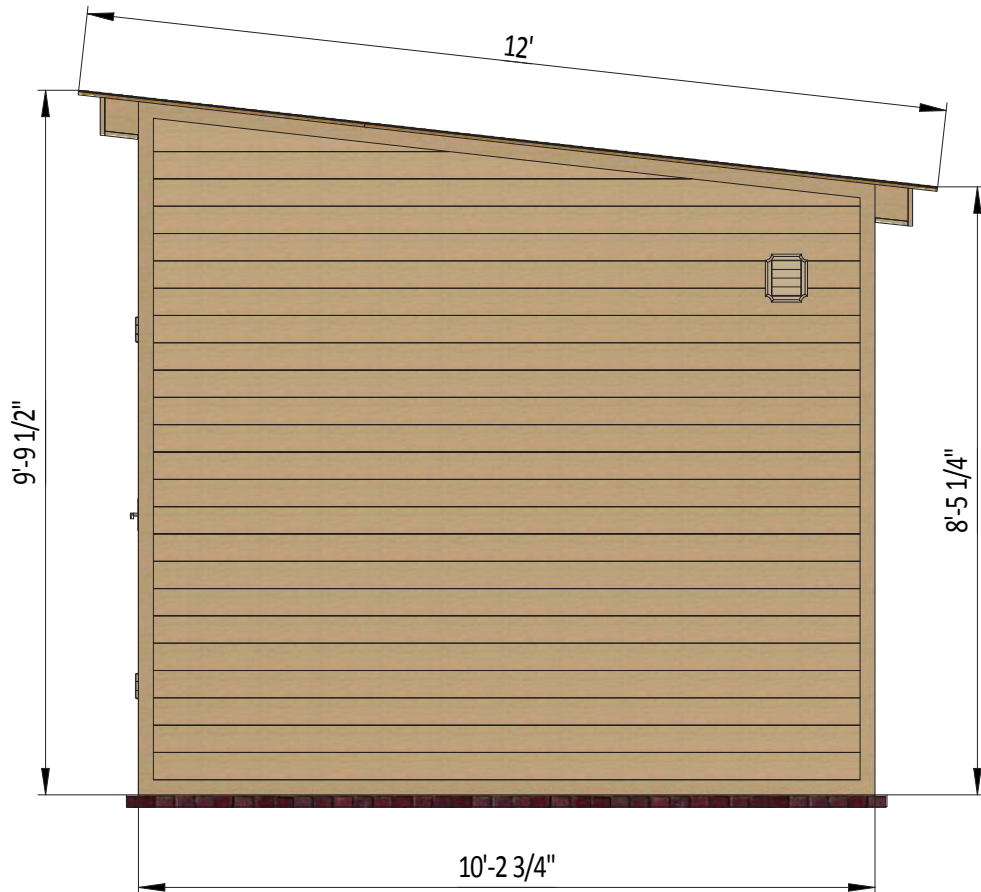
Size & Dimensions



back



right

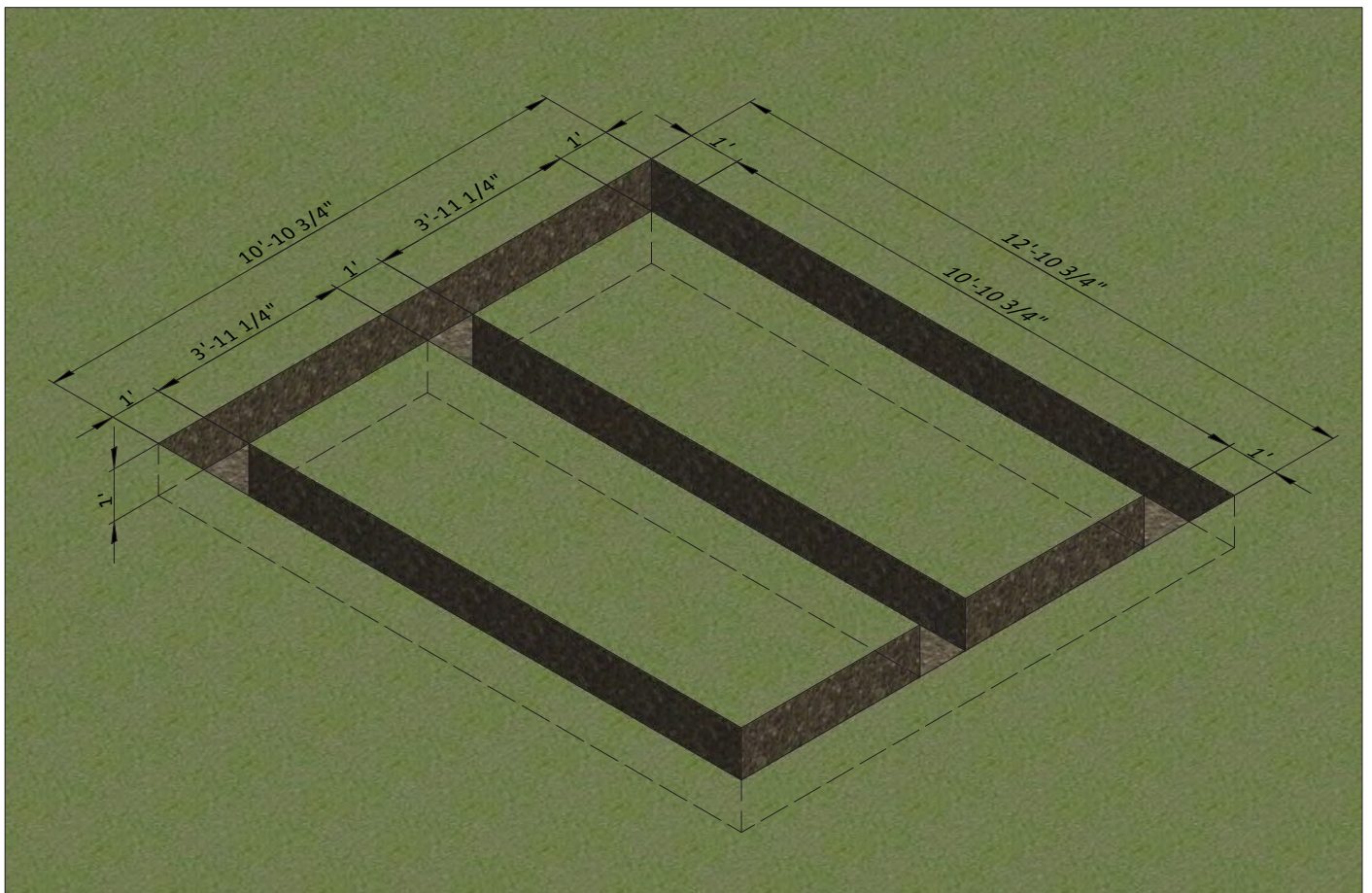


STEP 1

Ground Works

1.1 Clear the area where you want to build the shed and layout for the foundation. Use the below illustration as a guide.

1.2 For the foundation, dig the trenches at least 1' wide and 1' deep.

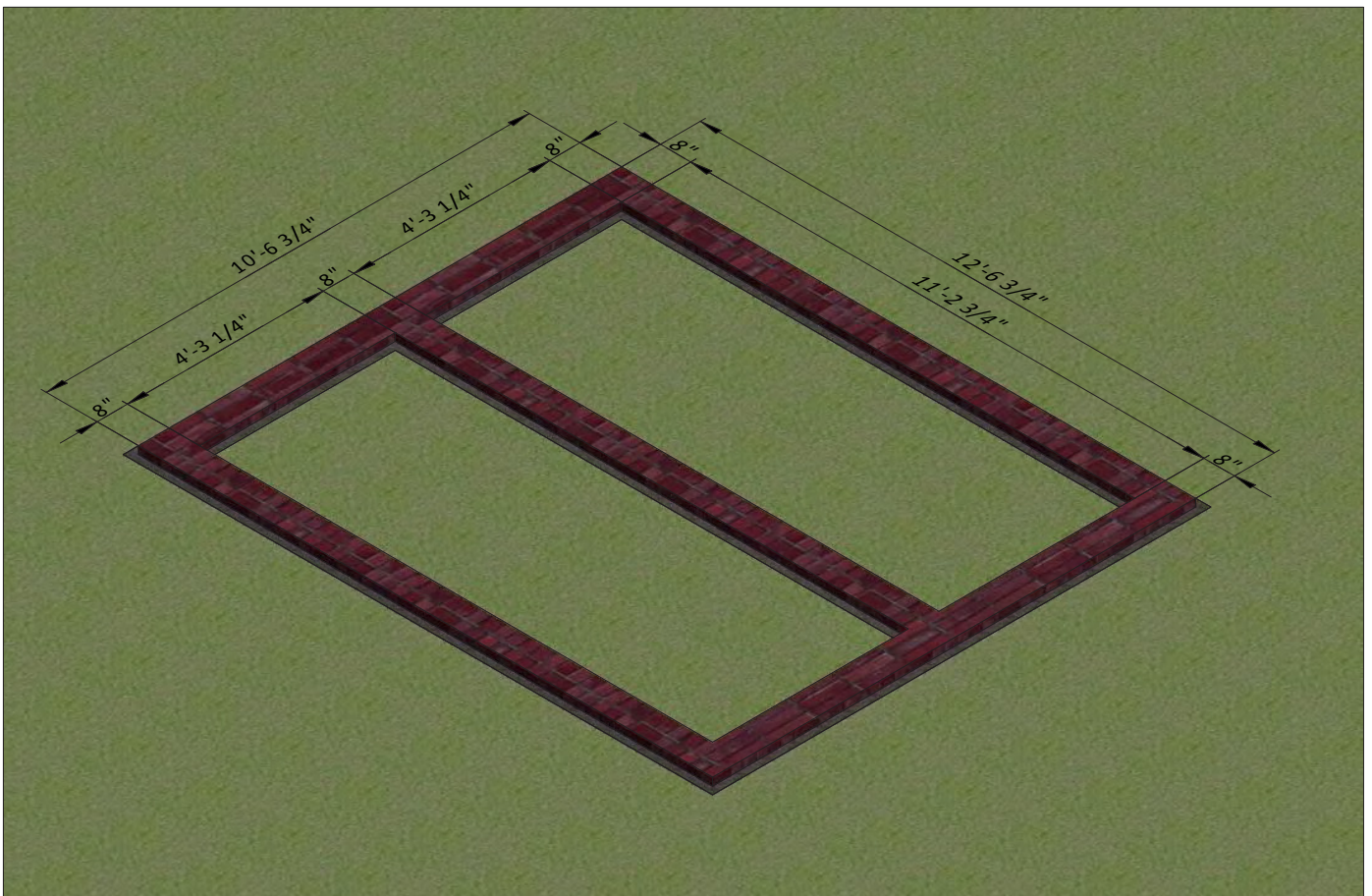
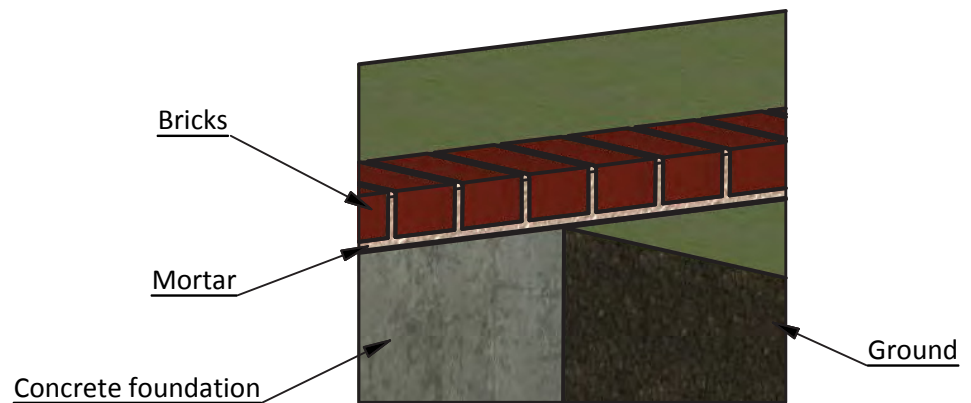


STEP 2

Foundation Preparation

2.1 Fill the trenches to ground level with concrete and let cure, or harden. Since curing times vary between brands, read the packaging for recommended curing times.

2.2 Once the concrete has cured, use standard-sized bricks and lay them across the foundation. You will need roughly 150 bricks for this step.



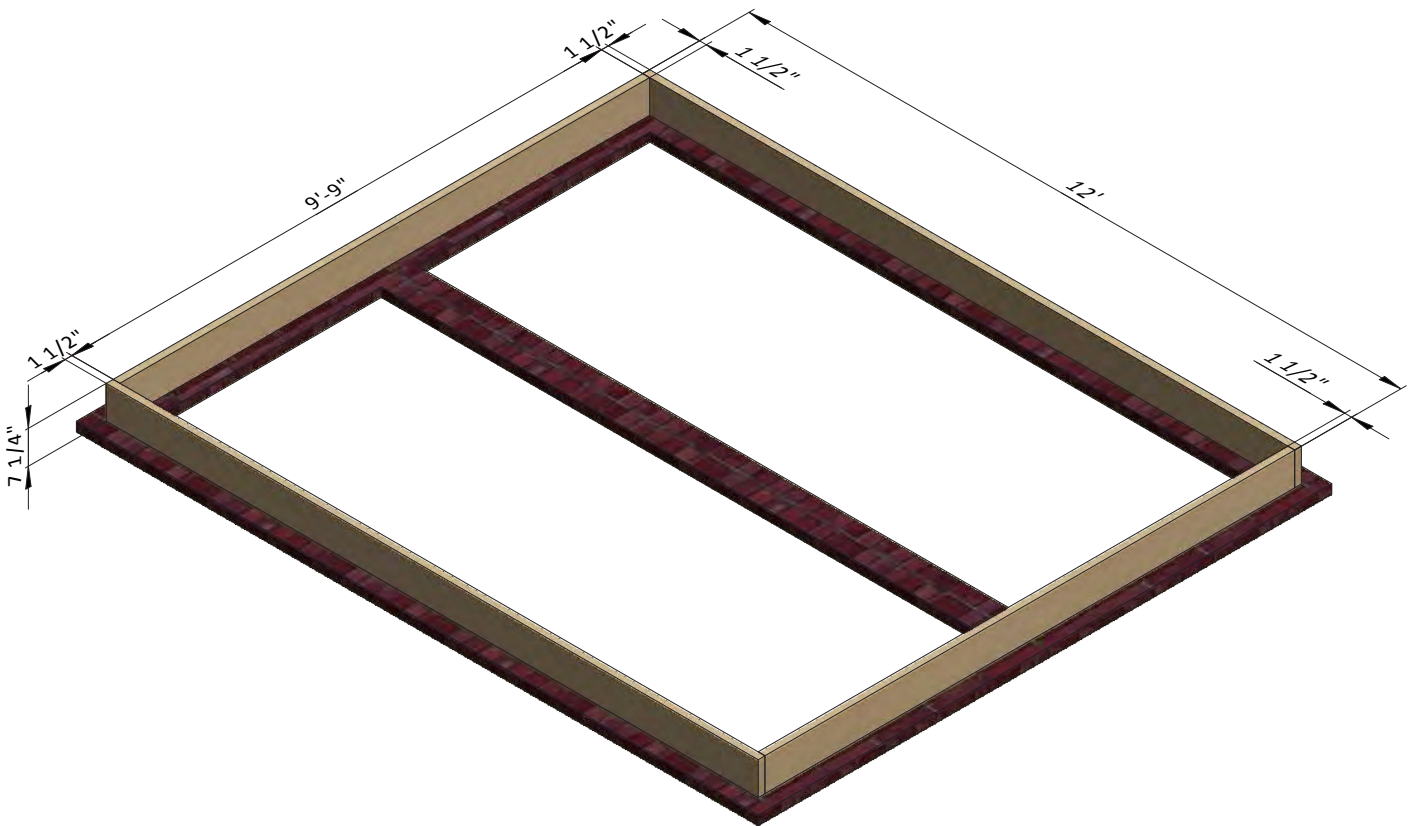
STEP 3

Framing the Floor

3.1 Assemble the frame using 1 1/2" x 7 1/4" pressure-treated lumber. You will need two boards cut to 12' that will be the rim joist and two boards cut to 9'-9" that will be the joist.

3.2 Secure the beams with 8x5" wood screws.

3.3 Using a speed square or carpenter's square, check the corners to make sure they are 90°.

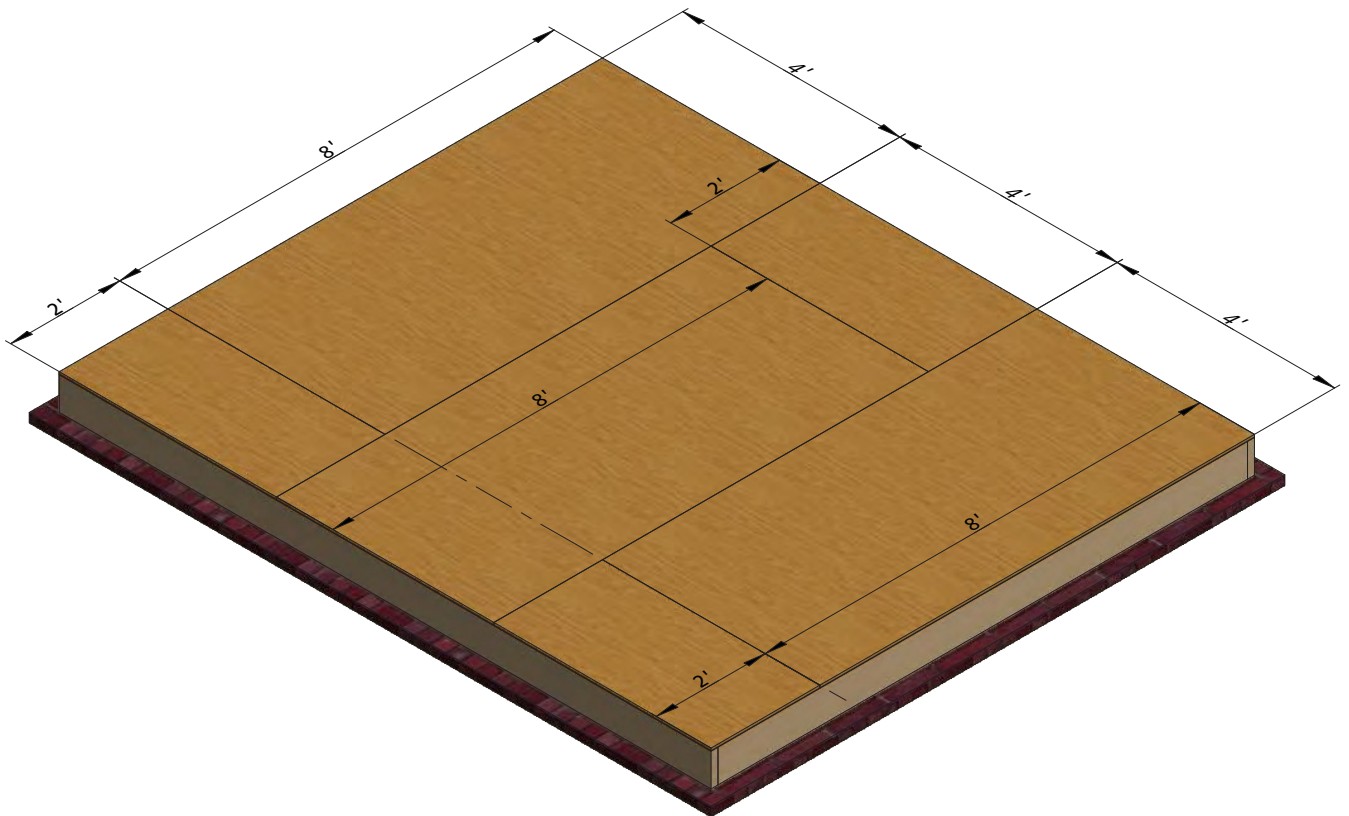


STEP 4

Install the Plywood Floor

4.1 Prepare the 9/16" plywood for the floor sheathing according to the drawing. You will need three 4' x 8' and three 2' x 4' sheets.

4.2 Secure the plywood with 2" wood screws.



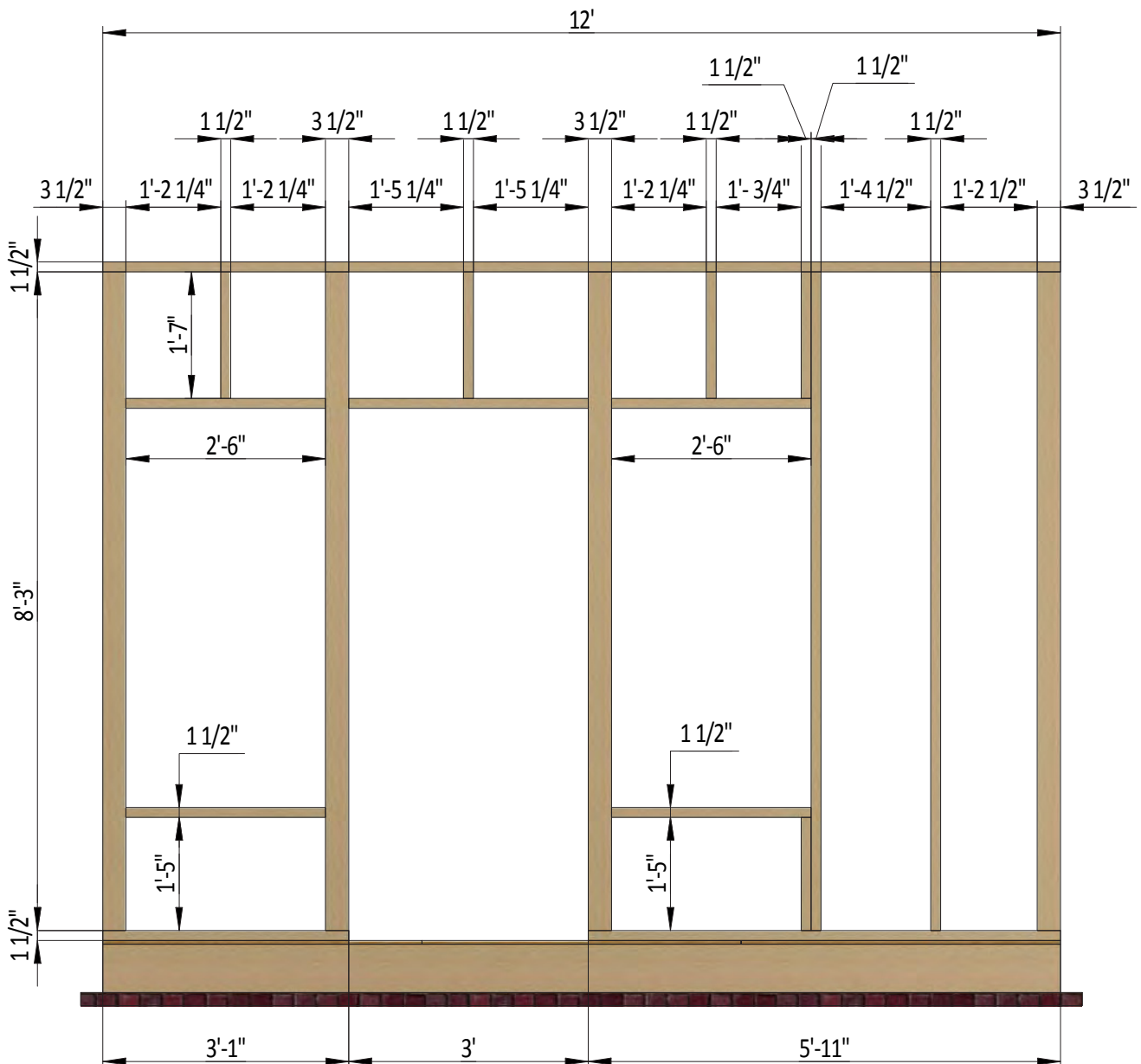
STEP 5

Assemble Front Wall Frame

5.1 Using 1 1/2" x 3 1/2" and 3 1/2" x 3 1/2" pressure-treated lumber, construct front wall frame using the drawing below as a reference. You will need six boards cut to 8'-3" and one board cut to 1'-5" that will be studs, one board cut to 3'-1" and one board cut to 5'-11" that will be the bottom beam, one board cut to 12' that will be the top beam, one board cut to 3' that will be the door header, four boards cut to 2'-6" that will be the window header and rough sill and four boards cut to 1'-7" that will be cripple studs.

5.2 Connect the beams with 2x3" and 2x5" wood screws.

5.3 Using a speed square or carpenter's square, check the corners to make sure they are 90°.



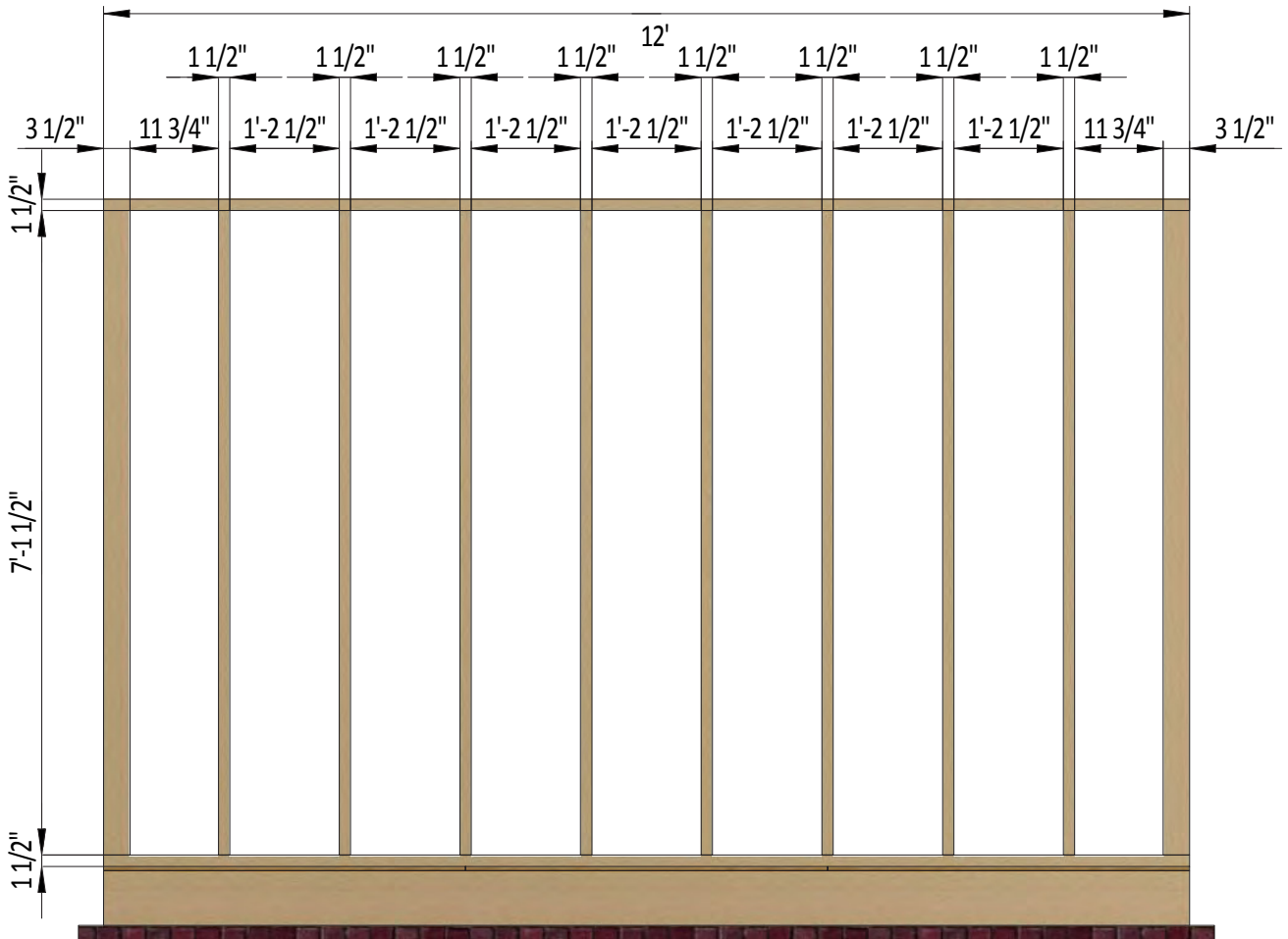
STEP 6

Assemble Back Wall Frame

6.1 Using 1 1/2" x 3 1/2" and 3 1/2" x 3 1/2" pressure-treated lumber, construct back wall frame using the drawing below as a reference. You will need ten boards cut to 7'-1 1/2" that will be the studs and two boards cut to 12' that will be the top and bottom plates.

6.2 Connect the beams with 2x3" wood screws.

6.3 Using a speed square or carpenter's square, check the corners to make sure they are 90°.



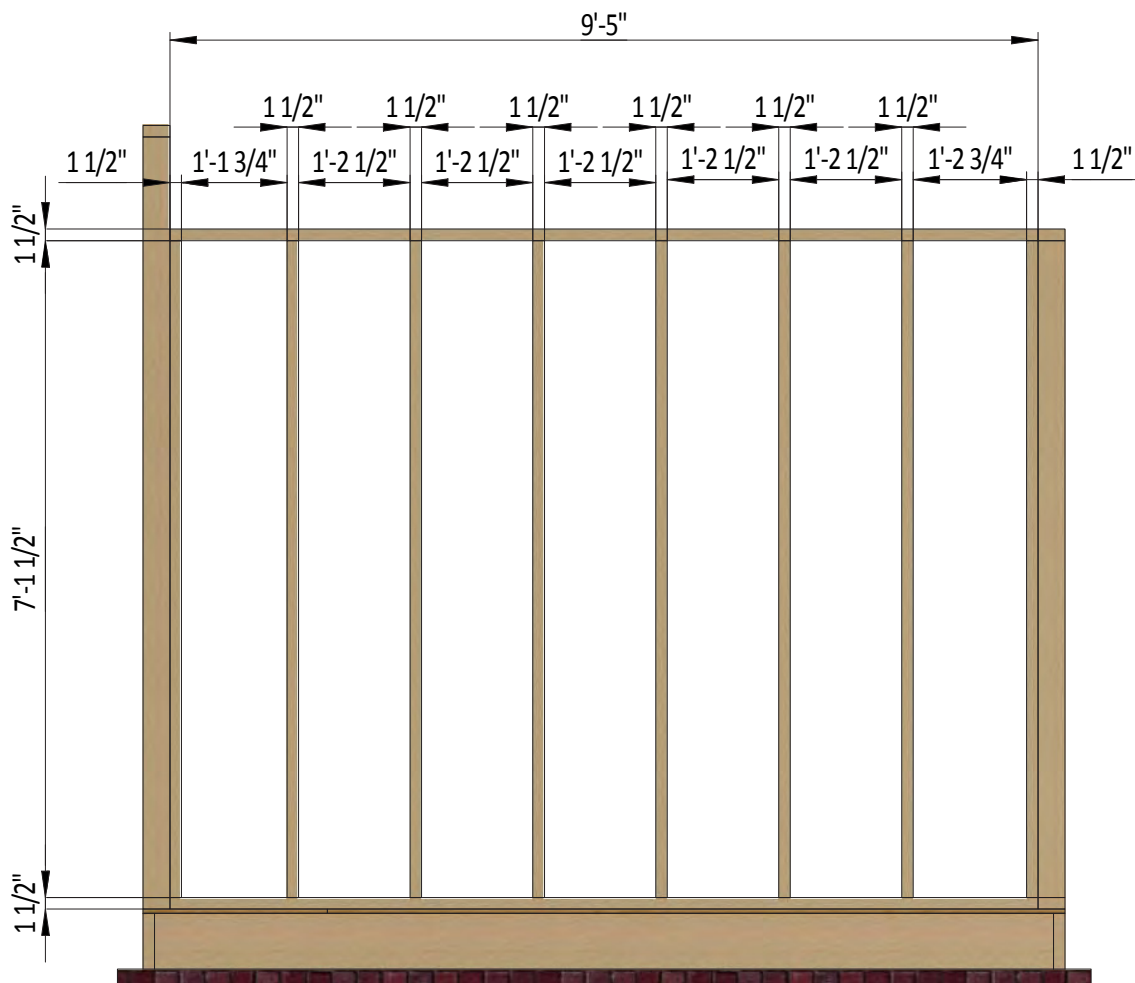
STEP 7

Assemble Right Wall Frame

7.1 Using 1 1/2" x 3 1/2" pressure-treated lumber, construct right wall frame using the drawing below as a reference. You will need eight boards cut to 7'-1 1/2" that will be the studs and two boards cut to 9'-5" that will be the top and bottom plates.

7.2 Connect the beams with 2x3" wood screws.

7.3 Using a speed square or carpenter's square, check the corners to make sure they are 90°.



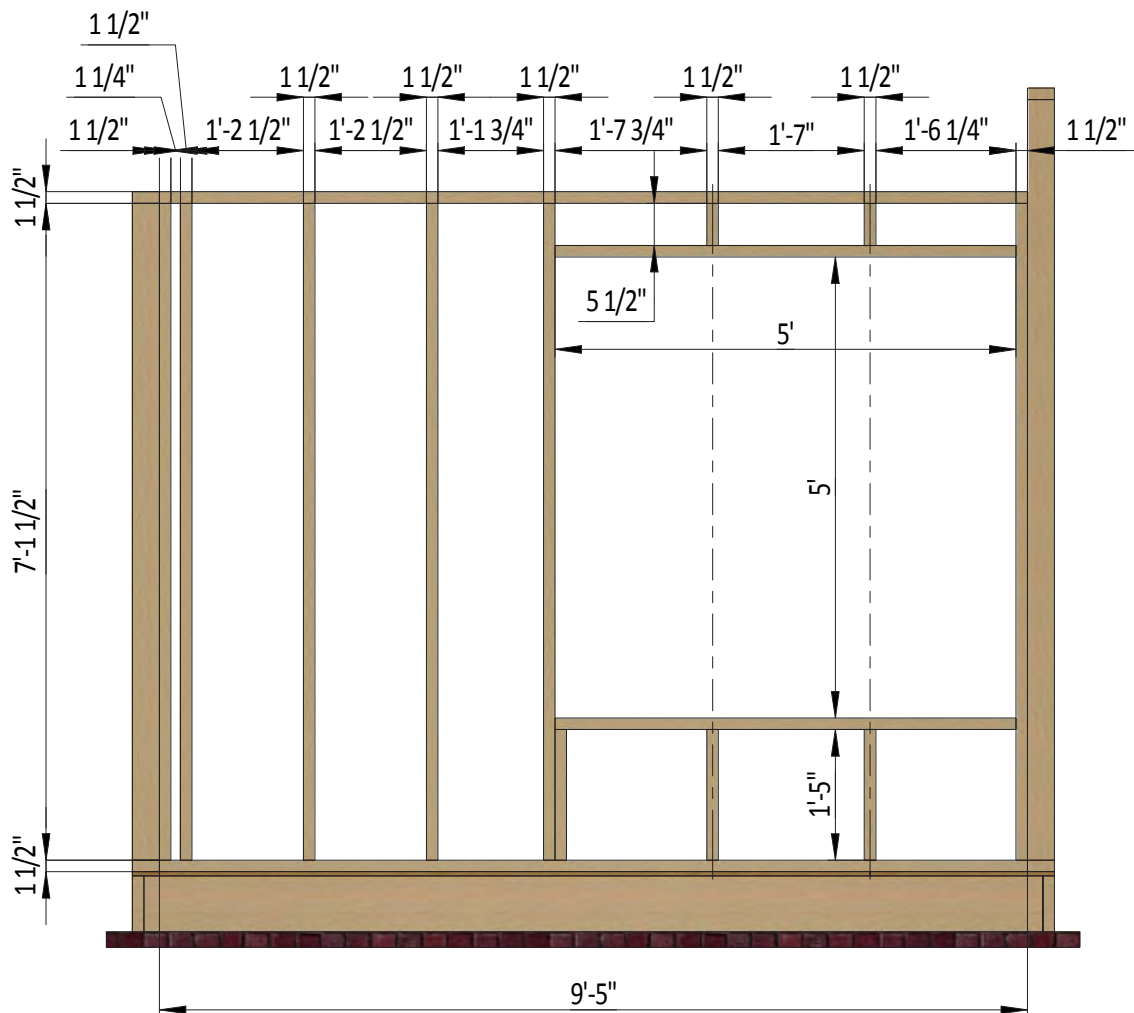
STEP 8

Assemble Left Wall Frame

8.1 Using 1 1/2" x 3 1/2" pressure-treated lumber, construct left wall frame using the drawing below as a reference. You will need six boards cut to 7'-1 1/2" and three boards cut to 1'-5" that will be studs, two boards cut to 9'-5" that will be the bottom and top plates, two boards cut to 5' that will be the window header and rough sill and two boards cut to 5 1/2" that will be cripple studs.

8.2 Connect the beams with 2x3" wood screws.

8.3 Using a speed square or carpenter's square, check the corners to make sure they are 90°.

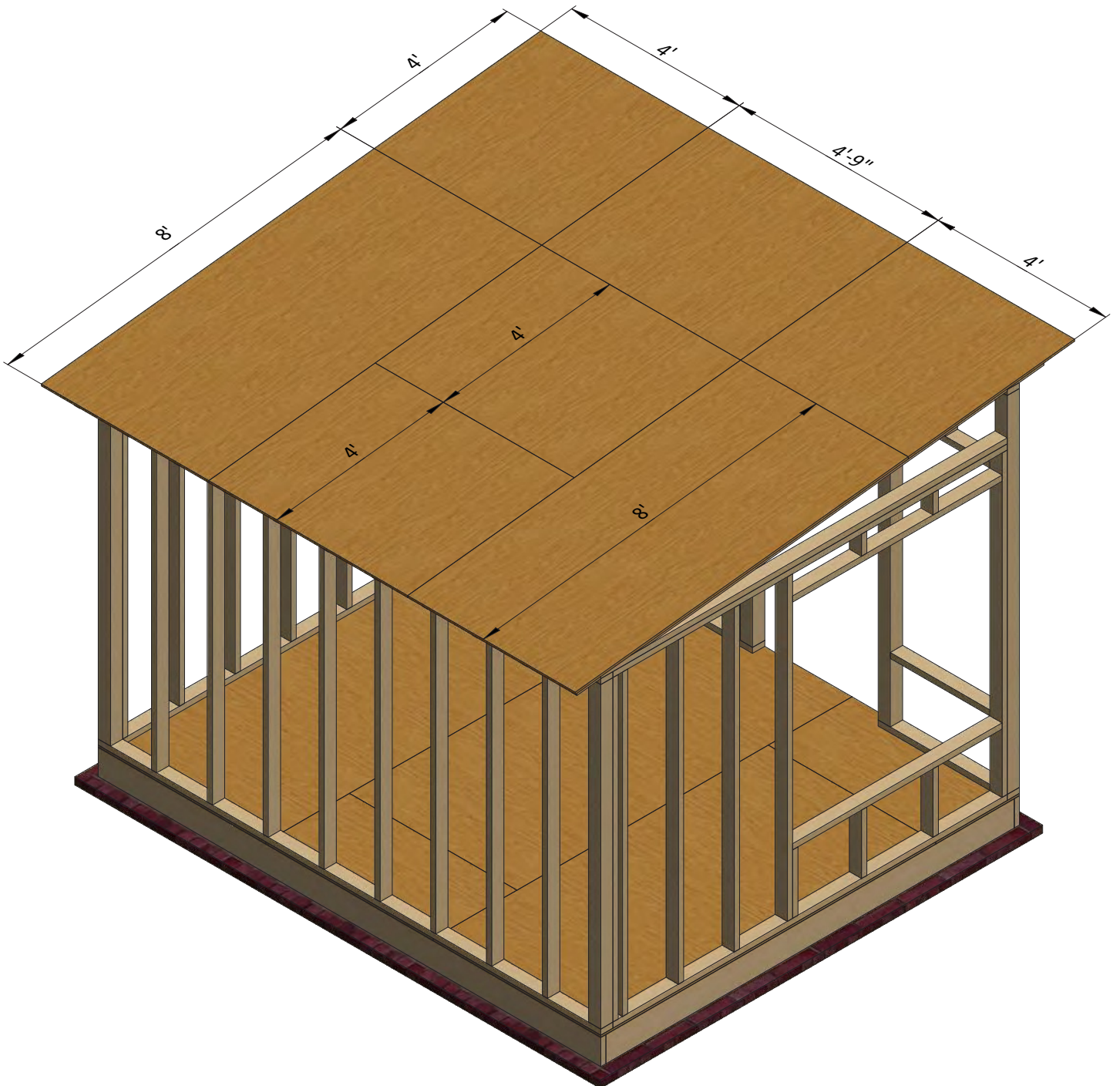


STEP 10

Install Plywood for the Roof

10.1 Cut sheets of 9/16" plywood for the roof sheathing using the drawing below as a guide. You will need two 8' x 4' sheets, three 4'-9" x 4' and two 4' x 4' sheets.

10.2 Secure the plywood with 2" wood screws.



STEP 11

Window Installation for Left Wall

It is necessary to prepare 1 window.

11.1 Using 1 1/2" x 2 1/2" pressure-treated lumber, assemble the outer frame for the window as shown in the drawing below. You will need four boards cut to 4'-11 1/2" that will be the vertical and horizontal girts. Cut the recesses in each beam for splicing connection and mill a recess for the glass.

11.2 Prepare and install 4'-7 1/4" x 4'-7 1/4" glass into inner frame groove and fasten it by window beading from four sides. Use 1/2" galvanized nails.

11.3 Insert window into side wall openings and connect them with 8x2" wood screws to the wall beams.



STEP 12

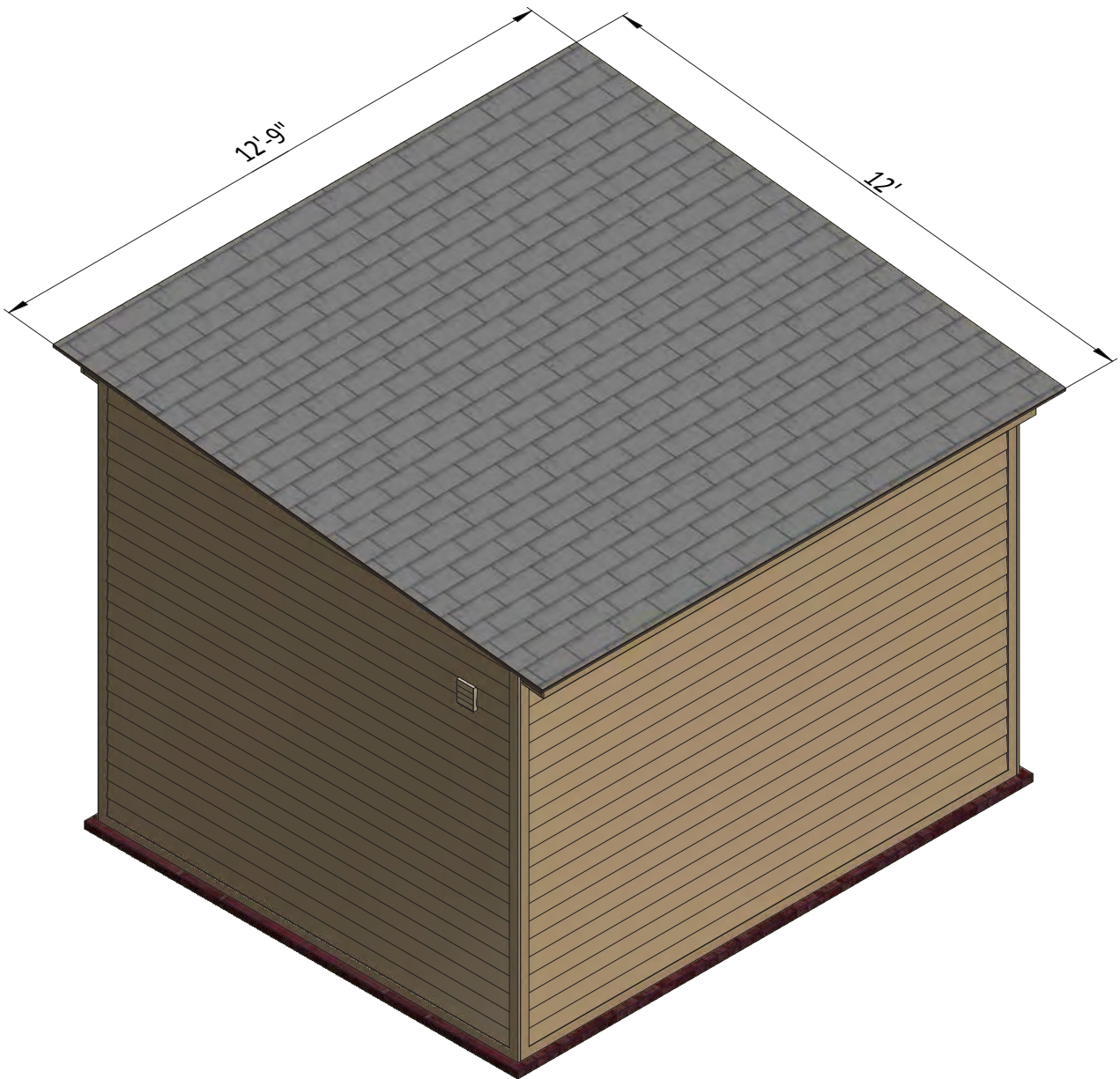
Roof Sheathing Installation

12.1 You will need 155 Sq Ft of asphalt shingle roofing. **27.2**

Add the metal drip edge to the fascias.

12.3 Cover the plywood with building paper.

12.4 Install asphalt shingle roofing using an industrial stapler.



STEP 13

Final Touches

Now that your shed is all done, you are ready to decorate it any way you want using your favorite paint, stain, or preservative.



Free vs. Premium Plan: What's the Difference?

We offer both free and premium versions of our detailed shed plans, designed to fit your needs and budget. Check out the table below to see the key differences and choose the plan that's right for you:

Features	Free Plan	Premium Plan
Steps Count	13	33
Illustrations per Step	Limited	Every Step
Print Ready Format	X	✓
Step-by-Step Instructions	Basic	Comprehensive
Full Materials & Cutting List	X	✓
Additional Illustrations	X	✓
Additional Blueprints	X	✓
Tools List	X	✓
Fastening Elements List	X	✓
Technical Support	X	✓

[Try Premium Risk-Free](#)

60-day refund policy with no questions asked.



For more great **HOW-TO** plans please visit: <https://craft.camp>

Copyright

The text and illustrations that appear here are the exclusive property of craft.camp and are protected by federal copyright laws. The duplication, sale or distribution of any portion of these plans without prior written consent from the original designer will be subject to the appropriate penalties for copyright infringement. Sharing this plan on the web is only permitted with an indicated original source: <https://craft.camp>