



Free 10'x10' Office Shed Plan

Free vs. Premium Plan: What's the Difference?

We offer both free and premium versions of our detailed shed plans, designed to fit your needs and budget. Check out the table below to see the key differences and choose the plan that's right for you:

Features	Free Plan	Premium Plan
Steps Count	12	22
Illustrations per Step	Limited	Every Step
Print Ready Format	X	✓
Step-by-Step Instructions	Basic	Comprehensive
Full Materials & Cutting List	X	✓
Additional Illustrations	X	✓
Additional Blueprints	X	✓
Tools List	X	✓
Fastening Elements List	X	✓
Technical Support	X	✓

[Try Premium Risk-Free](#)

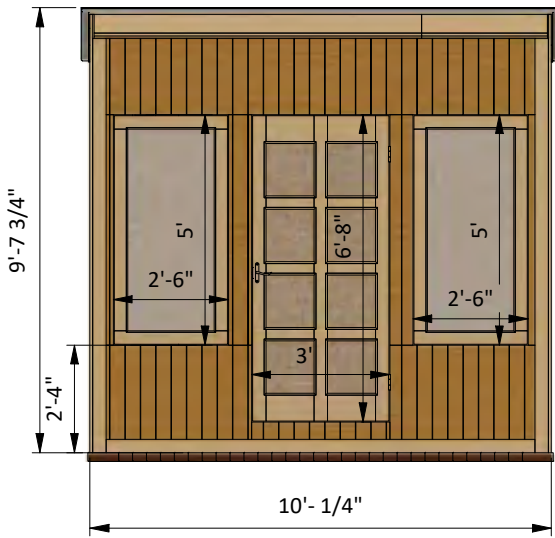
60-day refund policy with no questions asked.

10'x10' Office shed shopping list

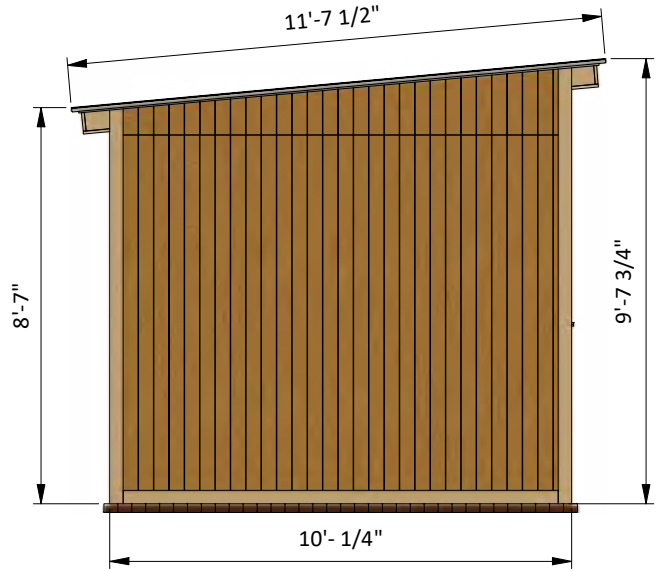
Material	Unit	Qty	Size
Lumber (1 x 6)	pcs	3	8'
Lumber (1 x 8)	pcs	3	8'
Lumber (2 x 4)	pcs	45	8'
Lumber (2 x 4)	pcs	11	10'
Lumber (2 x 6)	pcs	4	8'
Lumber (2 x 6)	pcs	9	12'
Lumber (2 x 8)	pcs	1	6'
Lumber (2 x 8)	pcs	11	10'
Lumber (4 x 4)	pcs	4	8'
OSB (1/2")	pcs	4	4' x 8'
Plywood (3/4")	pcs	4	4' x 8'
Plywood siding plybead panel (11/32")	pcs	13	4' x 8'

Size & Dimensions

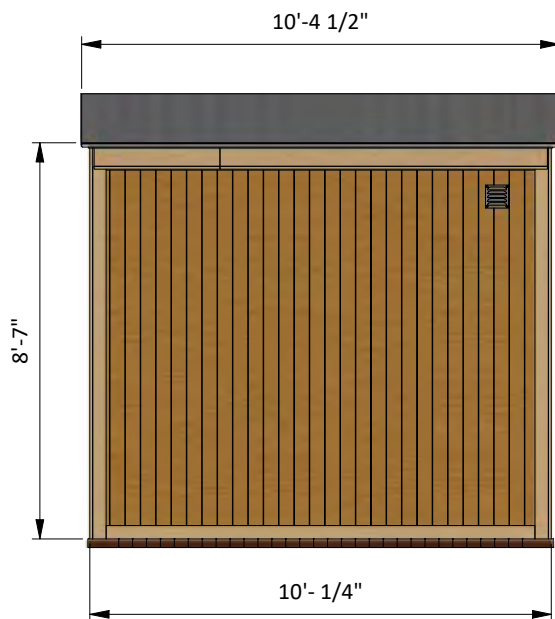
front



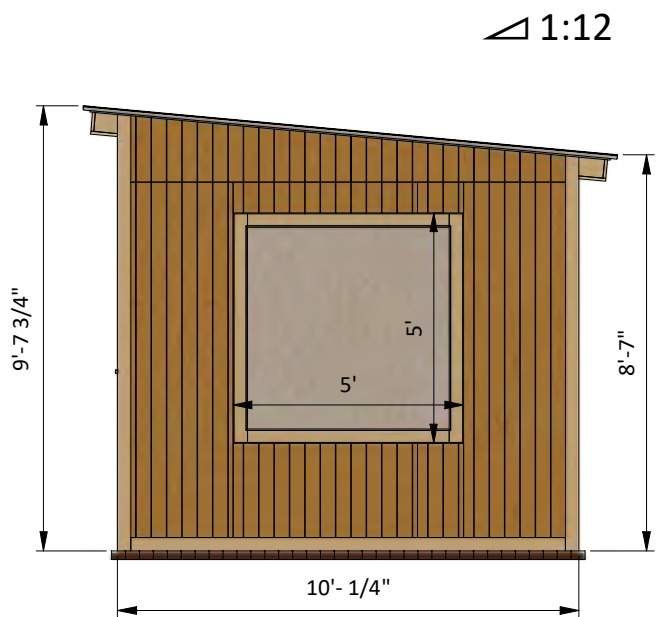
left



back

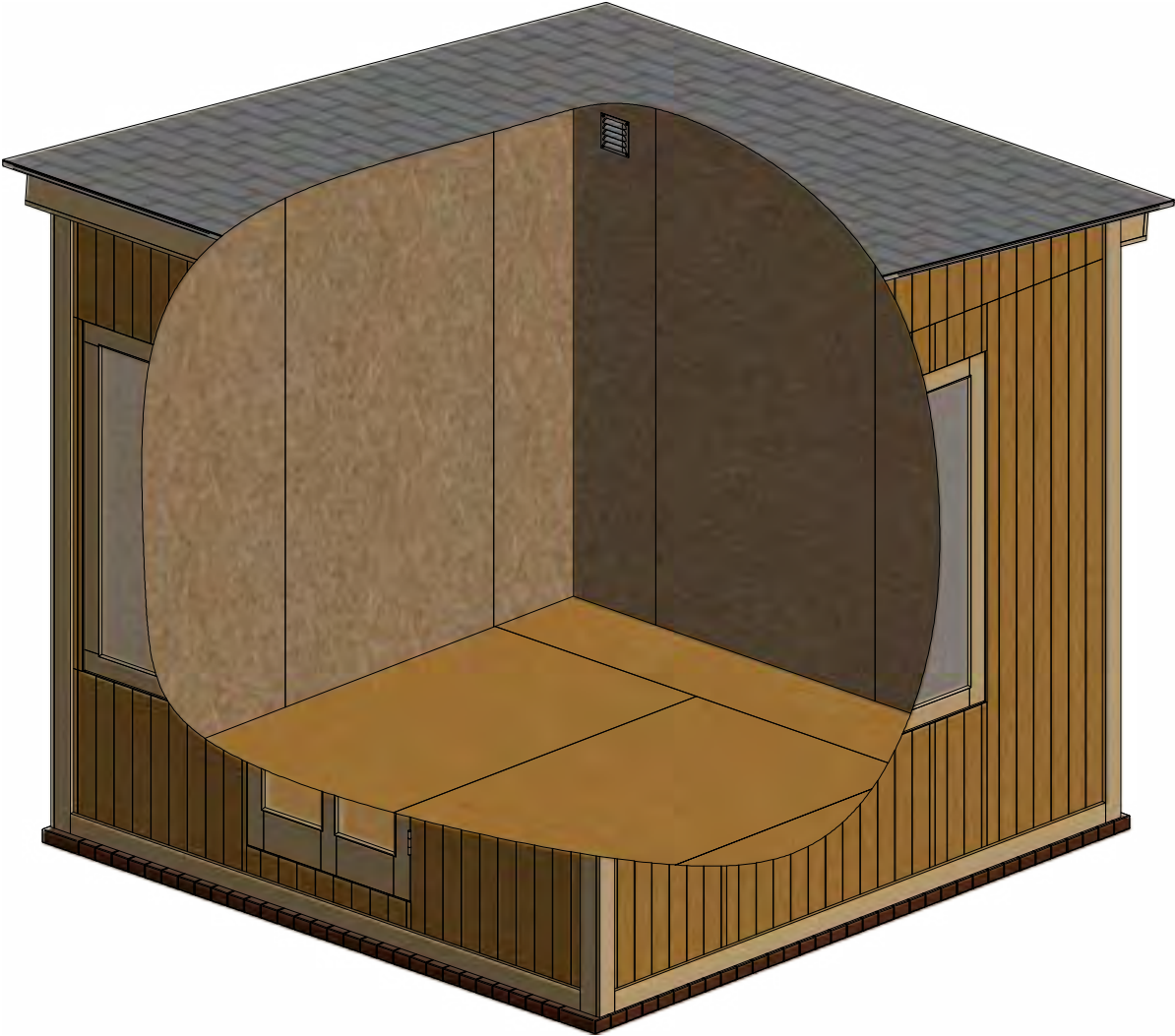


right



1:12

Interior view

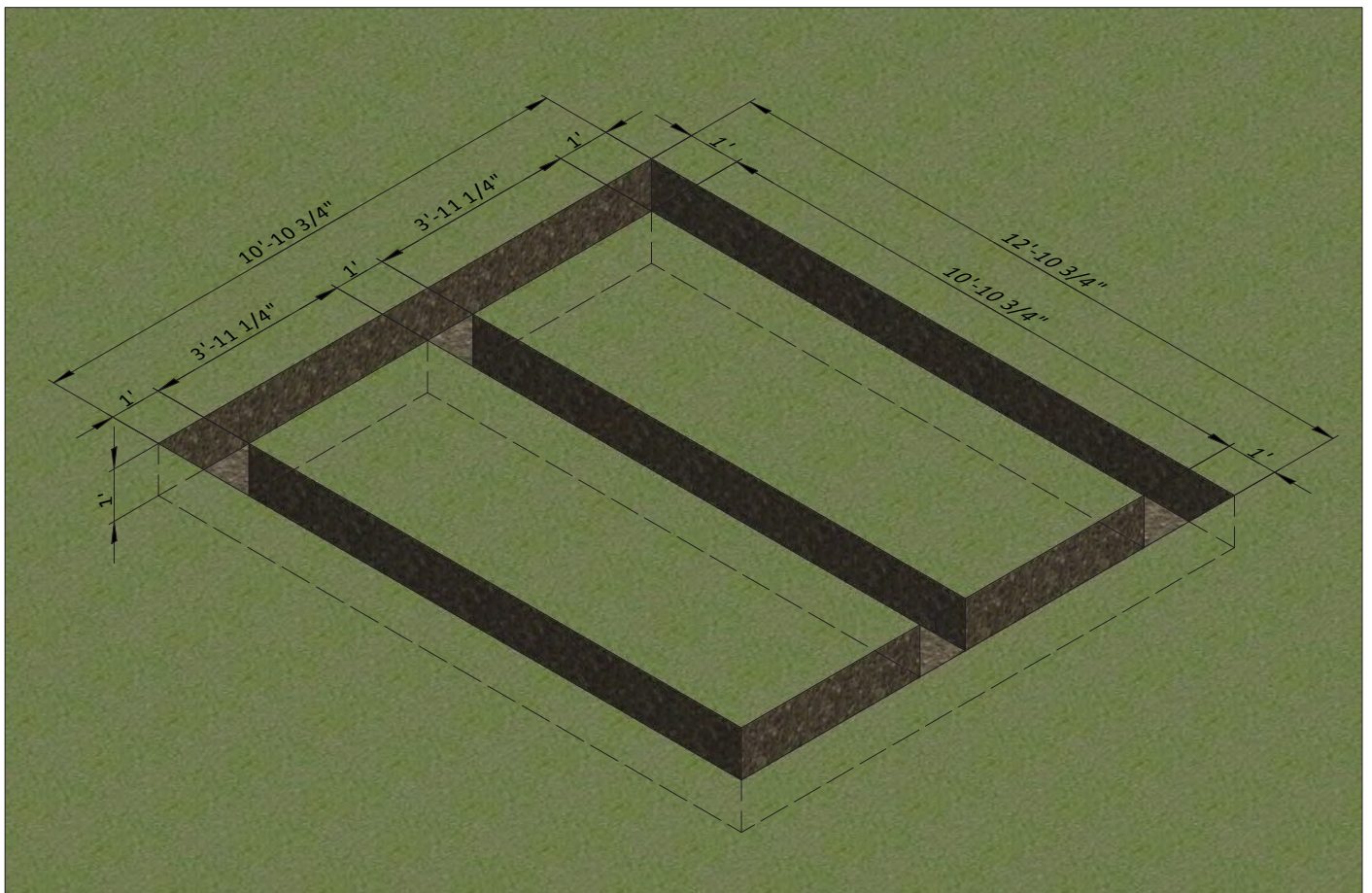


STEP 1

Ground Works

1.1 Clear the area where you want to build the shed and layout for the foundation. Use the below illustration as a guide.

1.2 For the foundation, dig the trenches at least 1' wide and 1' deep.

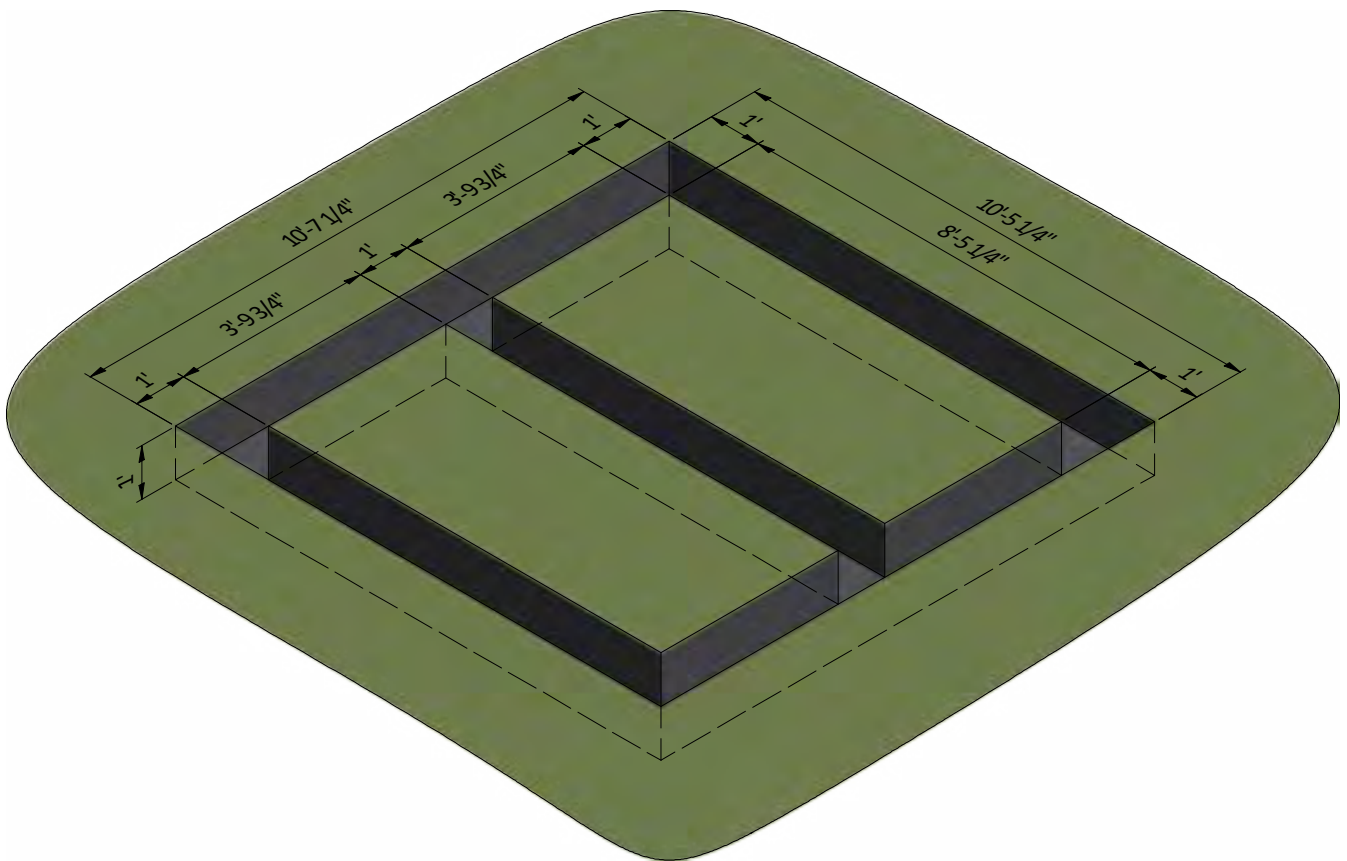


STEP 1

Ground Works

1.1 Clear the area where you want to build the shed and layout for the foundation. Use the below illustration as a guide.

1.2 For the foundation, dig the trenches at least 1' wide and 1' deep.

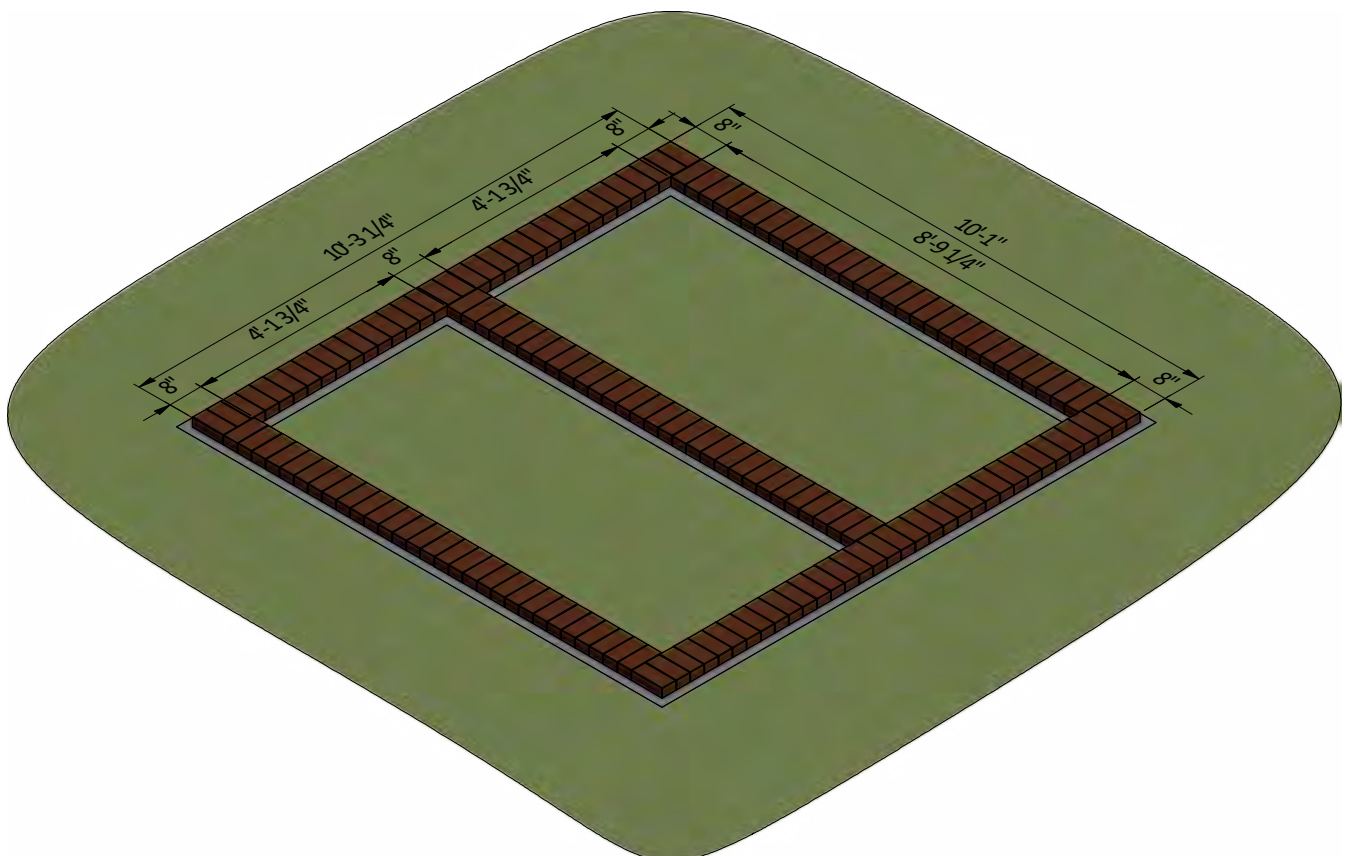
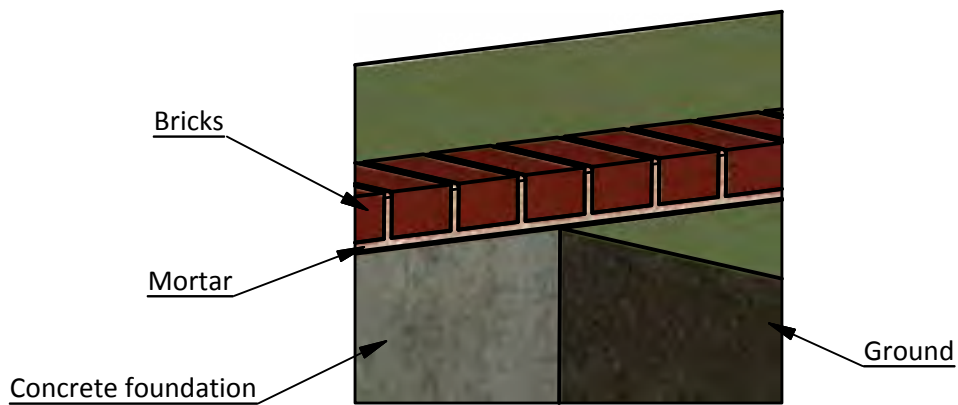


STEP 2

Foundation Preparation

2.1 Fill the trenches to ground level with concrete and let cure, or harden. Since curing times vary between brands, read the packaging for recommended curing times.

2.2 Once the concrete has cured, use standard-sized bricks and lay them across the foundation. You will need roughly 160 bricks for this step.



STEP 3

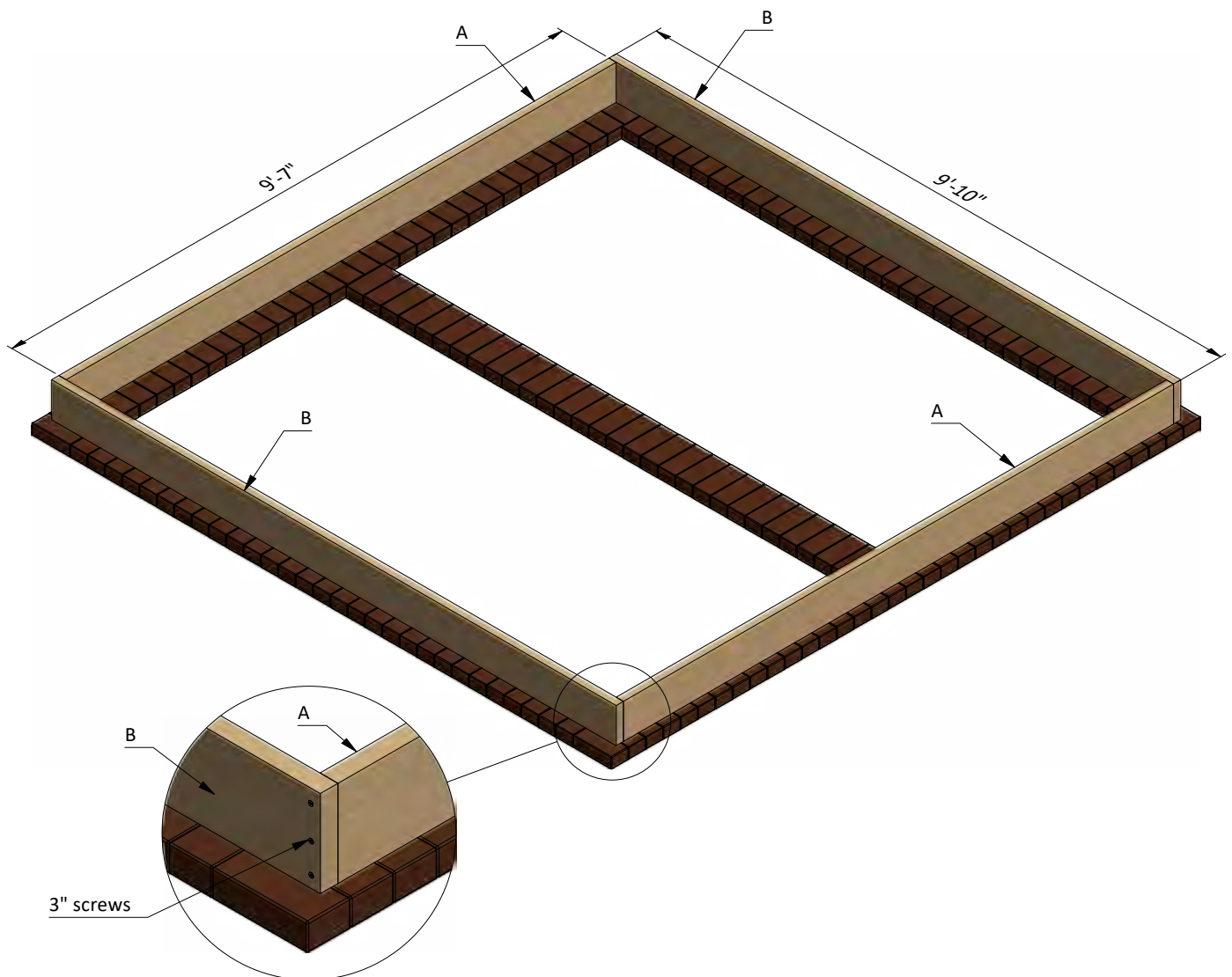
Framing the Floor

3.1 Assemble the frame using 2x8 lumber. You will need to prepare two rim joists and two joists.

3.2 Secure the beams with 3" wood screws.

3.3 Using a speed square or carpenter's square, check the corners to make sure they are 90°.

Pos	Description	Material	Dimension	Qty
A	Joist	2x8	9'-7"	2
B	Rim Joist	2x8	9'-10"	2



STEP 4

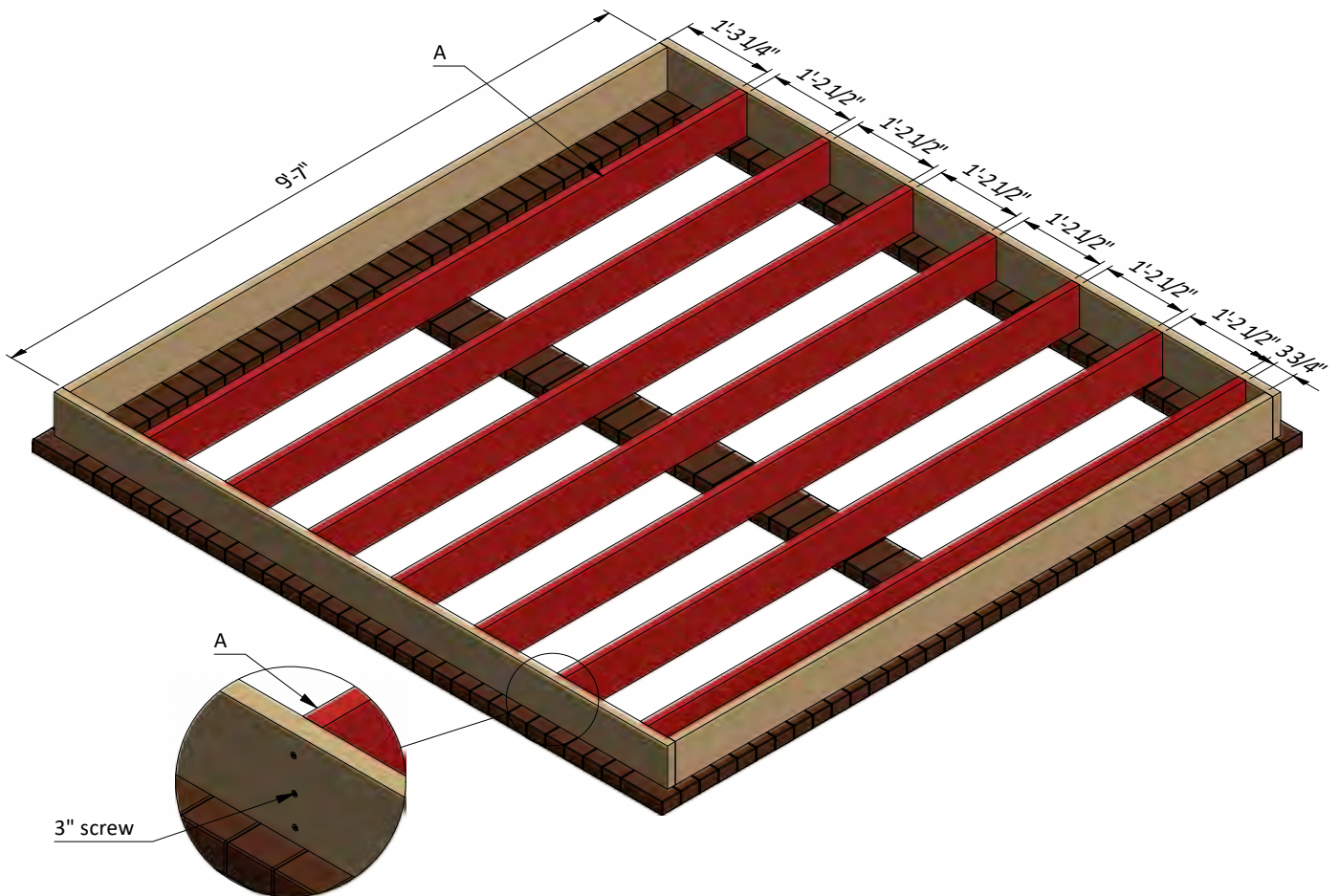
Framing the Floor

4.1 Assemble the frame using 2x8 lumber. You will need to prepare seven joists.

4.2 Secure the beams with 3" wood screws.

4.3 Using a speed square or carpenter's square, check the corners to make sure they are 90°.

Pos	Description	Material	Dimension	Qty
A	Joist	2x8	9'-7"	7



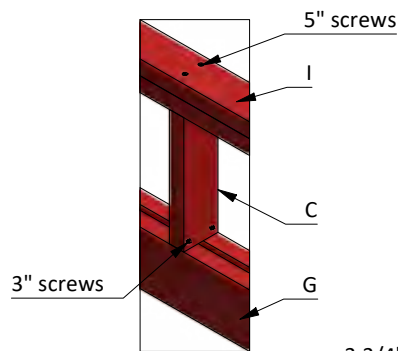
STEP 5

Assemble Front Wall Frame

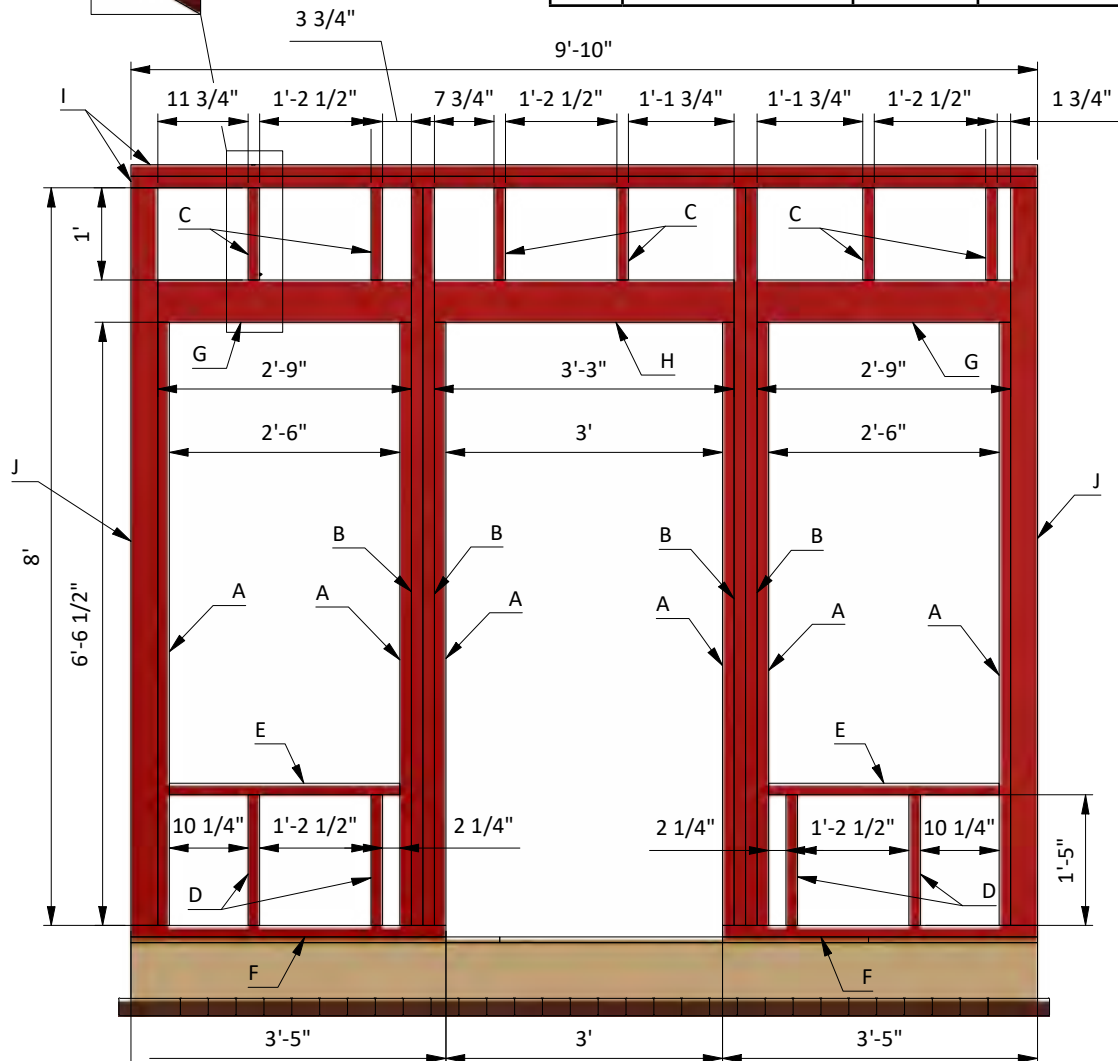
5.1 Using 2x4, 2x6 and 4x4 lumber, construct front wall frame using the drawing below as a reference. You will need to prepare beams in necessary quantity according to the cutting list below.

5.2 Connect the beams with 3" and 5" wood screws.

5.3 Using a speed square or carpenter's square, check the corners to make sure they are 90°.



Pos	Description	Material	Dimension	Qty
A	Stud	2x4	6'-6 1/2"	6
B	Stud	2x4	8'	4
C	Cripple stud	2x4	1'	6
D	Stud	2x4	1'-5"	4
E	Rough sill	2x4	2'-6"	2
F	Bottom beam	2x4	3'-5"	2
G	Window header	2x6	2'-9"	4
H	Door header	2x6	3'-3"	2
I	Top beam	2x4	9'-10"	2
J	Stud	4x4	8'	2



STEP 6

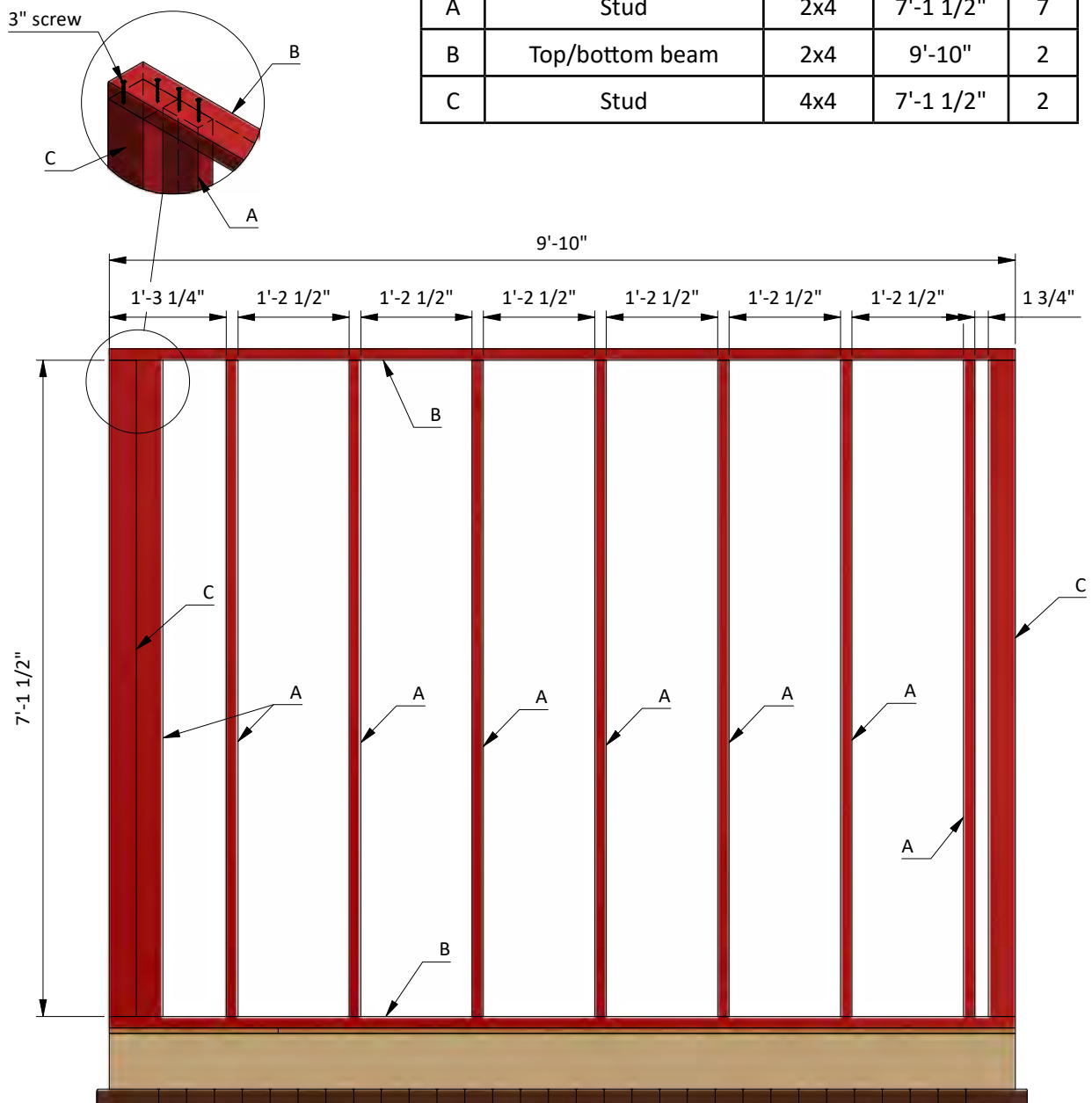
Assemble Back Wall Frame

6.1 Using 2x4 and 4x4 lumber, construct back wall frame using the drawing below as a reference. You will need to prepare beams in necessary quantity according to the cutting list below.

6.2 Connect the beams with 3" wood screws.

6.3 Using a speed square or carpenter's square, check the corners to make sure they are 90°.

Pos	Description	Material	Dimension	Qty
A	Stud	2x4	7'-1 1/2"	7
B	Top/bottom beam	2x4	9'-10"	2
C	Stud	4x4	7'-1 1/2"	2



STEP 7

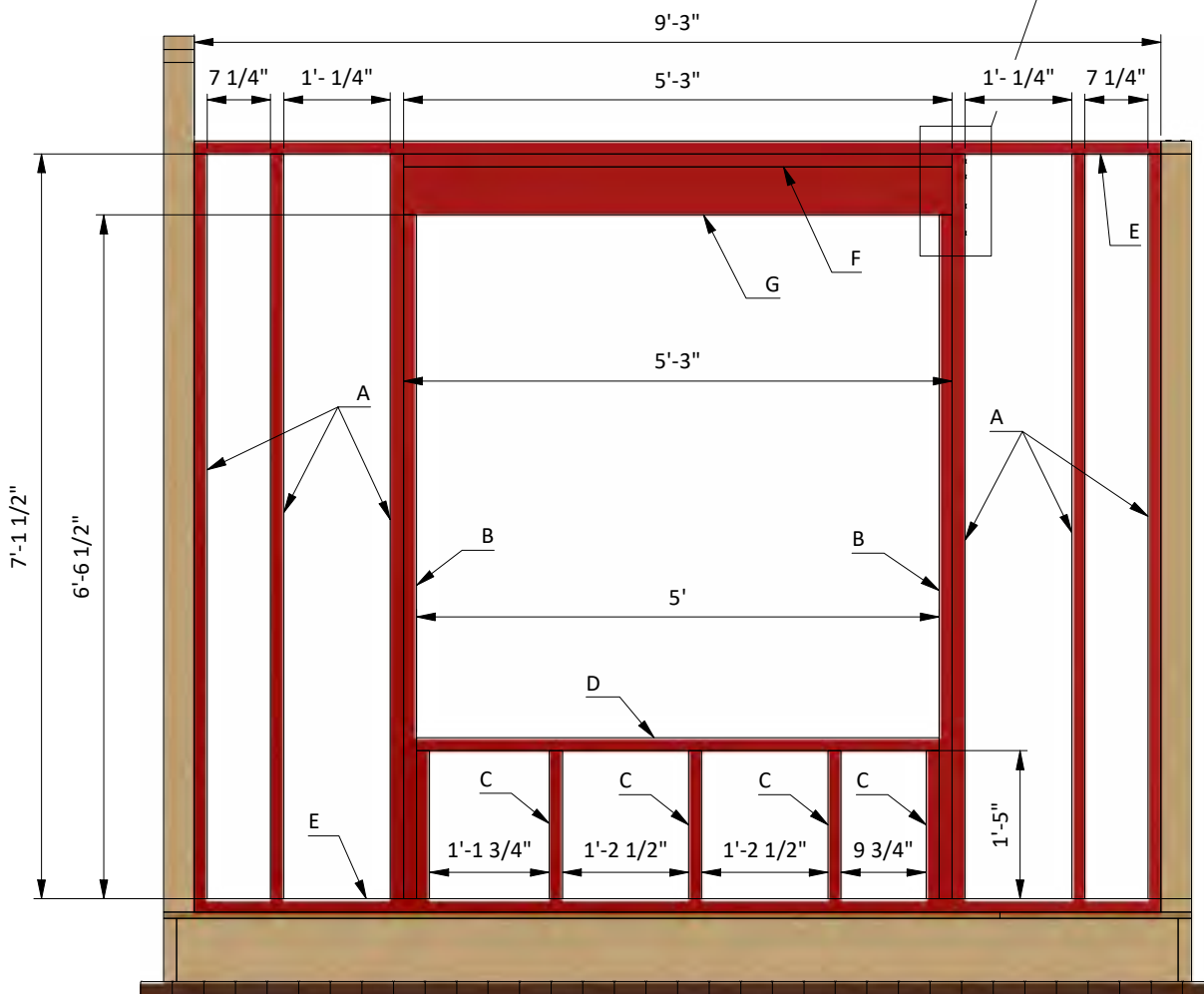
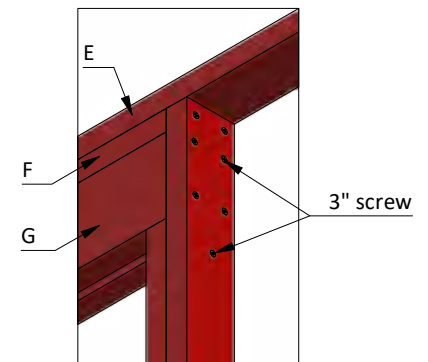
Assemble Right Wall Frame

7.1 Using 2x4 and 2x6 lumber, construct right wall frame using the drawing below as a reference. You will need to prepare beams in necessary quantity according to the cutting list below.

7.2 Connect the beams with 3" wood screws.

7.3 Using a speed square or carpenter's square, check the corners to make sure they are 90°.

Pos	Description	Material	Dimension	Qty
A	Stud	2x4	7'-1 1/2"	6
B	Stud	2x4	6'-6 1/2"	2
C	Stud	2x4	1'-5"	5
D	Rough sill	2x4	5'	1
E	Top/bottom beam	2x4	9'-3"	2
F	Top beam	2x4	5'-3"	1
G	Window header	2x6	5'-3"	2



STEP 8

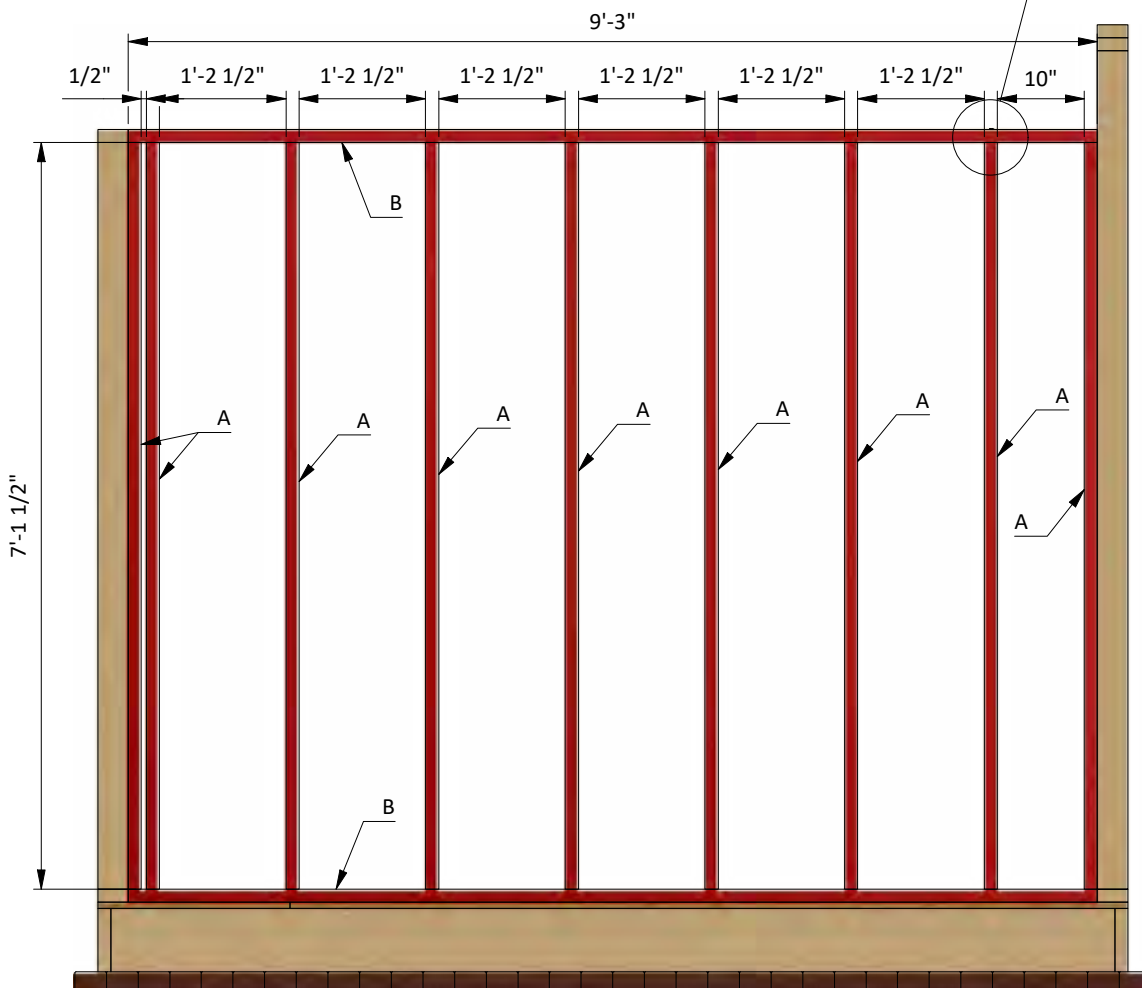
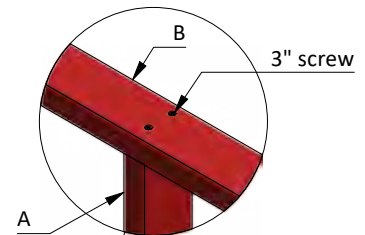
Assemble Left Wall Frame

8.1 Using 2x4 lumber, construct left wall frame using the drawing below as a reference. You will need to prepare beams in necessary quantity according to the cutting list below.

8.2 Connect the beams with 3" wood screws.

8.3 Using a speed square or carpenter's square, check the corners to make sure they are 90°.

Pos	Description	Material	Dimension	Qty
A	Stud	2x4	7'-1 1/2"	9
B	Top/bottom beam	2x4	9'-3"	2



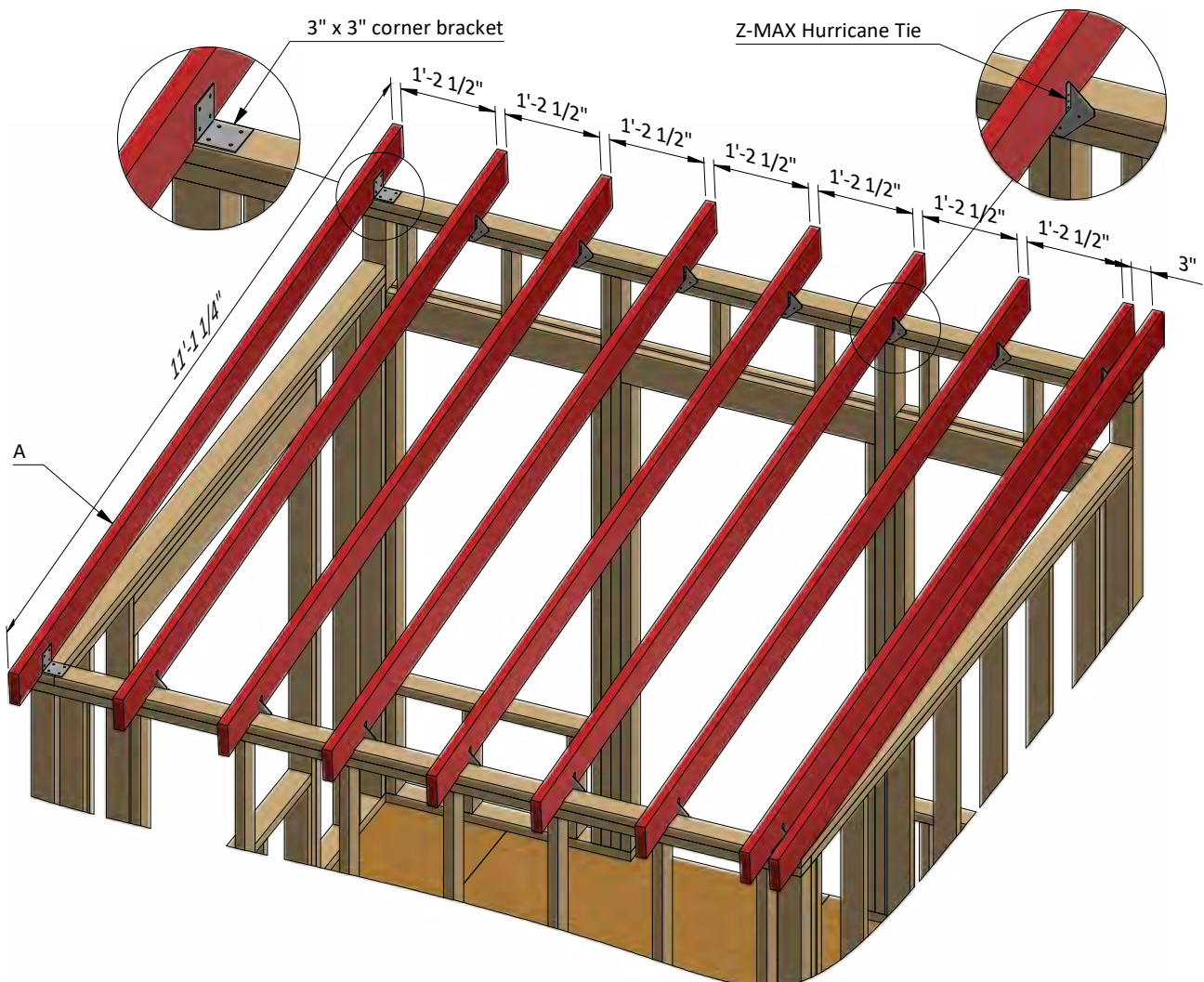
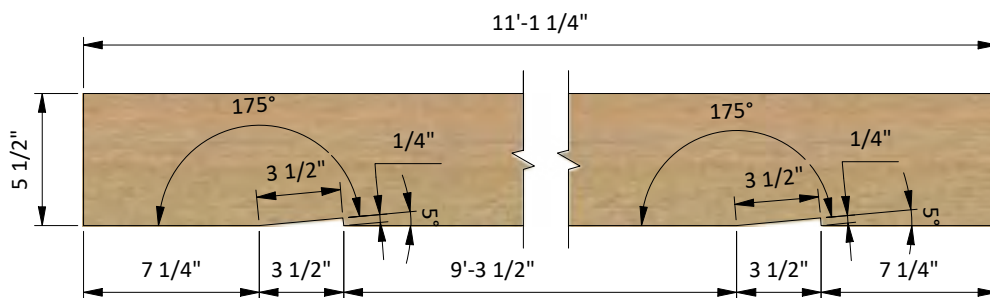
STEP 9

Assemble the Roof Frame

9.1 Using 2x6 lumber, construct roof frame using the drawing below as a reference. You will need nine boards cut to 11'-1 1/4" that will be rafters. Provide cuttings to fit the top beams.

9.2 Connect the rafters with Z-MAX Hurricane Tie and 3x3x3 corner bracer to the top beams.

Pos	Description	Material	Dimension	Qty
A	Rafters	2x6	11'-1 1/4"	9



STEP 10

Shed's Roof Sheathing Installation

10.1 Prepare metal drip edge with 6" width. You will need 44' to cover all the perimeter.

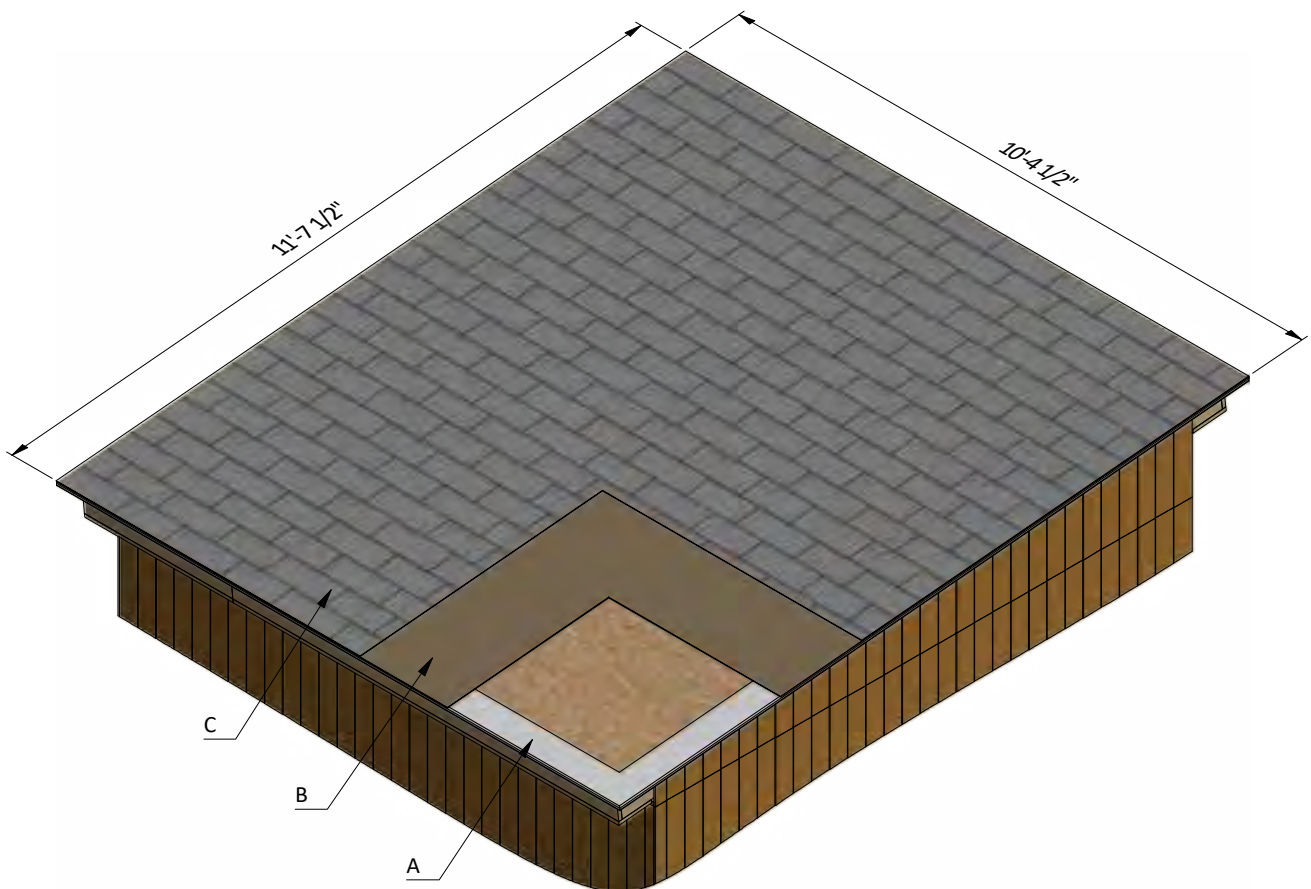
10.2 Place the drip edge down, aligning it to the plywood edge. Use 2" nails to secure the first drip edge. When you place the next drip edge piece, it should overlap the first by an inch.

10.3 You will need 121 Sq Ft of building paper and asphalt shingle roofing.

10.4 Cover the plywood and drip edge with building paper. Try to install sheets with 1" overlapping. Use 2" nails to secure the sheets.

10.5 Install asphalt shingle roofing using an industrial stapler.

Pos	Description	Material	Dimension	Qty
A	Metal drip edge	6"	-	44'
B	Roof sheathing	Building paper	-	121 square ft
C	Roof sheathing	Asphalt shingle roofing	-	121 square ft



STEP 11

Windows Installation for the Front Wall

It is necessary to prepare 2 windows.

11.1 Using 2x4 lumber, assemble the outer frame for the window as shown in the drawing below. You will need two boards cut to 4'-11 1/2" that will be the vertical girts and two boards cut to 2'-5 1/2" that will be the horizontal girts. Cut the recesses in each beam for splicing connection and mill a recess for the glass.

11.2 Prepare and install glass into inner frame groove and fasten it by window beading from four sides. Use 1/2" galvanized nails.

11.3 Insert window into side wall openings and connect them with 8x2" wood screws to the wall beams.

Pos	Description	Material	Dimension	Qty
A	Vertical studs	2x4	4'-11 1/2"	4
B	Top/bottom beam	2x4	2'-5 1/2"	4
C	Glass	1/8"	1'-11" x 4'-5"	2
D	Window beading			26ft



STEP 12

Final Touches

Now that your shed is all done, you are ready to decorate it any way you want using your favorite paint, stain, or preservative.



Free vs. Premium Plan: What's the Difference?

We offer both free and premium versions of our detailed shed plans, designed to fit your needs and budget. Check out the table below to see the key differences and choose the plan that's right for you:

Features	Free Plan	Premium Plan
Steps Count	12	22
Illustrations per Step	Limited	Every Step
Print Ready Format	X	✓
Step-by-Step Instructions	Basic	Comprehensive
Full Materials & Cutting List	X	✓
Additional Illustrations	X	✓
Additional Blueprints	X	✓
Tools List	X	✓
Fastening Elements List	X	✓
Technical Support	X	✓

[Try Premium Risk-Free](#)

60-day refund policy with no questions asked.



For more great **HOW-TO** plans please visit: <https://craft.camp>

Copyright

The text and illustrations that appear here are the exclusive property of craft.camp and are protected by federal copyright laws. The duplication, sale or distribution of any portion of these plans without prior written consent from the original designer will be subject to the appropriate penalties for copyright infringement. Sharing this plan on the web is only permitted with an indicated original source: <https://craft.camp>