



Free 5'x6' Chicken Coop Plan

Up to 10 chickens

Free vs. Premium Plan: What's the Difference?

We offer both free and premium versions of our detailed shed plans, designed to fit your needs and budget. Check out the table below to see the key differences and choose the plan that's right for you:

Features	Free Plan	Premium Plan
Steps Count	13	23
Illustrations per Step	Limited	Every Step
Print Ready Format	X	✓
Step-by-Step Instructions	Basic	Comprehensive
Full Materials & Cutting List	X	✓
Additional Illustrations	X	✓
Additional Blueprints	X	✓
Tools List	X	✓
Fastening Elements List	X	✓
Technical Support	X	✓

[Try Premium Risk-Free](#)

60-day refund policy with no questions asked.

5'x6' chicken coop material list

Site Preparation

- Concrete
- Bricks

Bottom Frame

- Pressure-Treated Lumber
- Plywood

Walls Frames

- Pressure-Treated Lumber

Shed's Roof

- Pressure-Treated Lumber
- Pressure-Treated Board
- Plywood
- Building paper
- Asphalt shingles
- Metal drip edge

Front/Side Shed's Window

- Pressure-Treated Lumber
- Window beading
- Glass

Walls Exterior Siding

- Pressure-Treated Lumber
- Wood siding boards

Top Frame

- Pressure-Treated Lumber

Fasteners & Hardware

- Corner braces
- Galvanized nails
- Wood screws

STEP 1

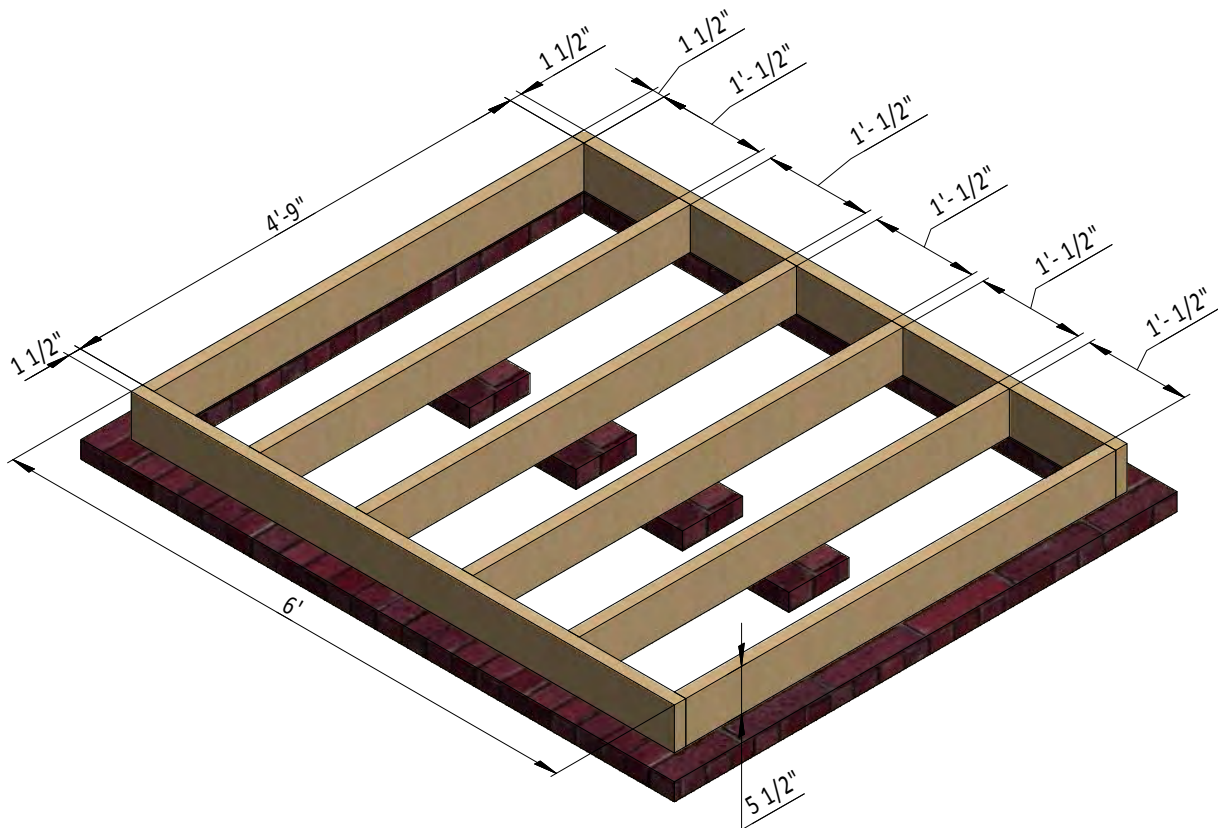
Framing The Floor

1.1 Assemble the frame using 1 1/2" x 5 1/2" pressure-treated material. You will need two boards cut to 6' that will be the rim joist and two boards cut to 4'9" that will be the joist.

1.2 Provide 4 joists from the pressure-treated lumber with cross-section 1 1/2 x 5 1/2 inch and install them into the frame according to the drawing.

1.3 Secure the beams with 3x5" screws.

1.4 Using a speed square or carpenter's square, check the corners to make sure the corners are 90 degrees.



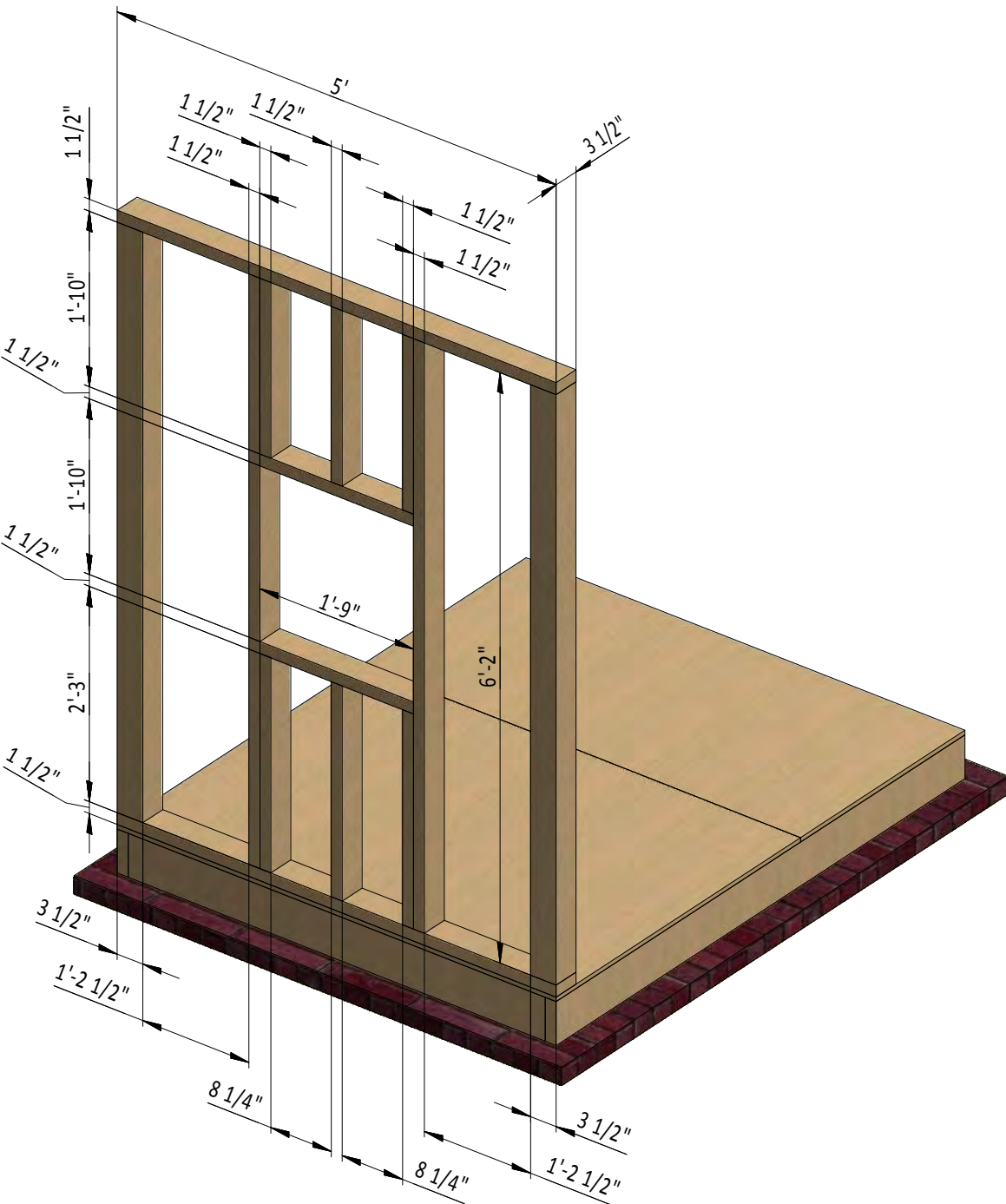
STEP 2

Assemble Left Side Wall Frame

2.1 Using 1 1/2 " x 3 1/2 " and 3 1/2" x 3 1/2" pressure-treated material, construct left wall frame using the drawing below as a reference.

2.2 Connect the beams with 2x4" wood screws.

2.3 Using a speed square or carpenter's square, check the corners to make sure the corners are 90 degrees.



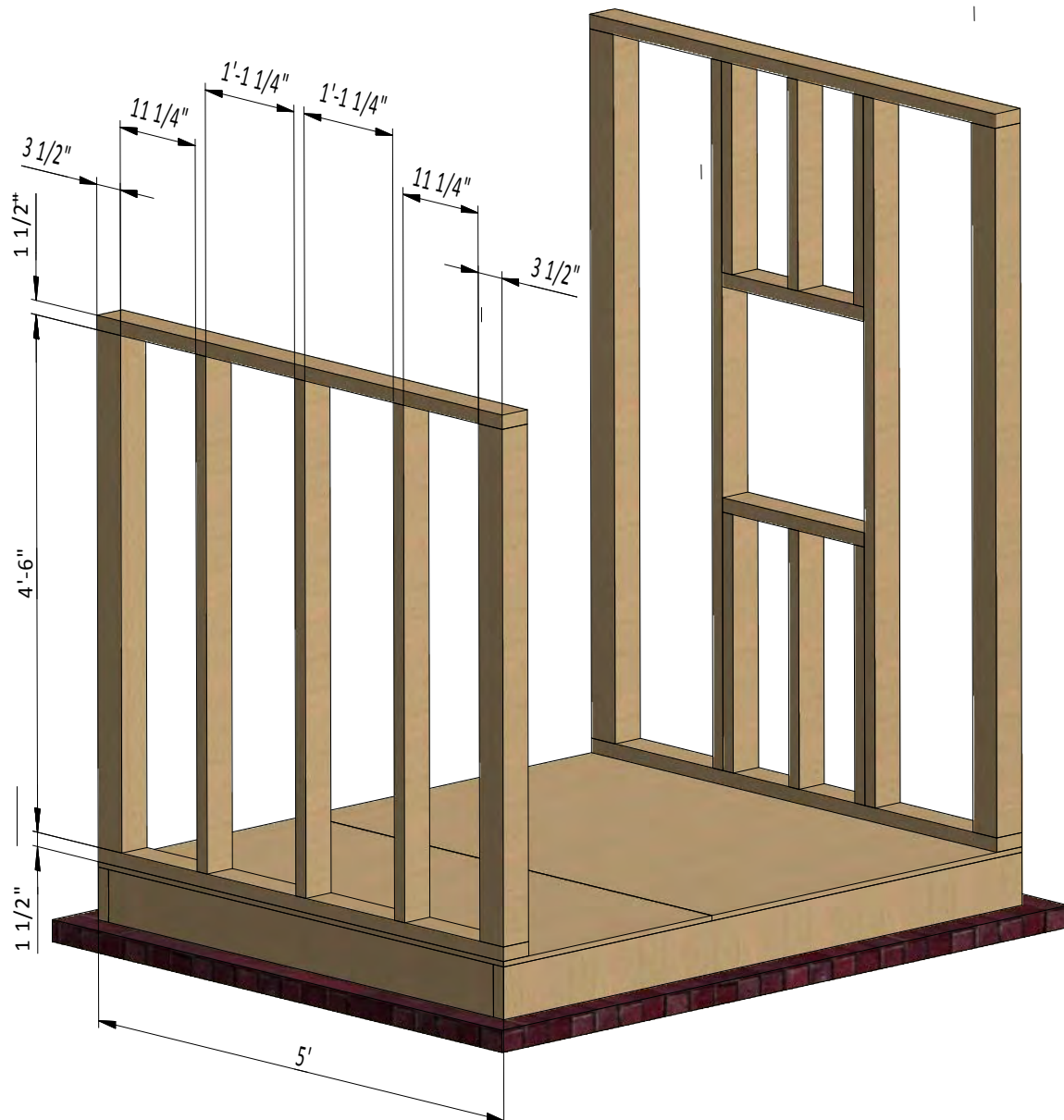
STEP 3

Assemble Right Side Wall Frame

3.1 Using 1 1/2 " x 3 1/2 " and 3 1/2" x 3 1/2" pressure-treated material, construct right wall frame using the drawing below as a reference.

3.2 Connect the beams with 2x4" wood screws.

3.3 Using a speed square or carpenter's square, check the corners to make sure the corners are 90 degrees.



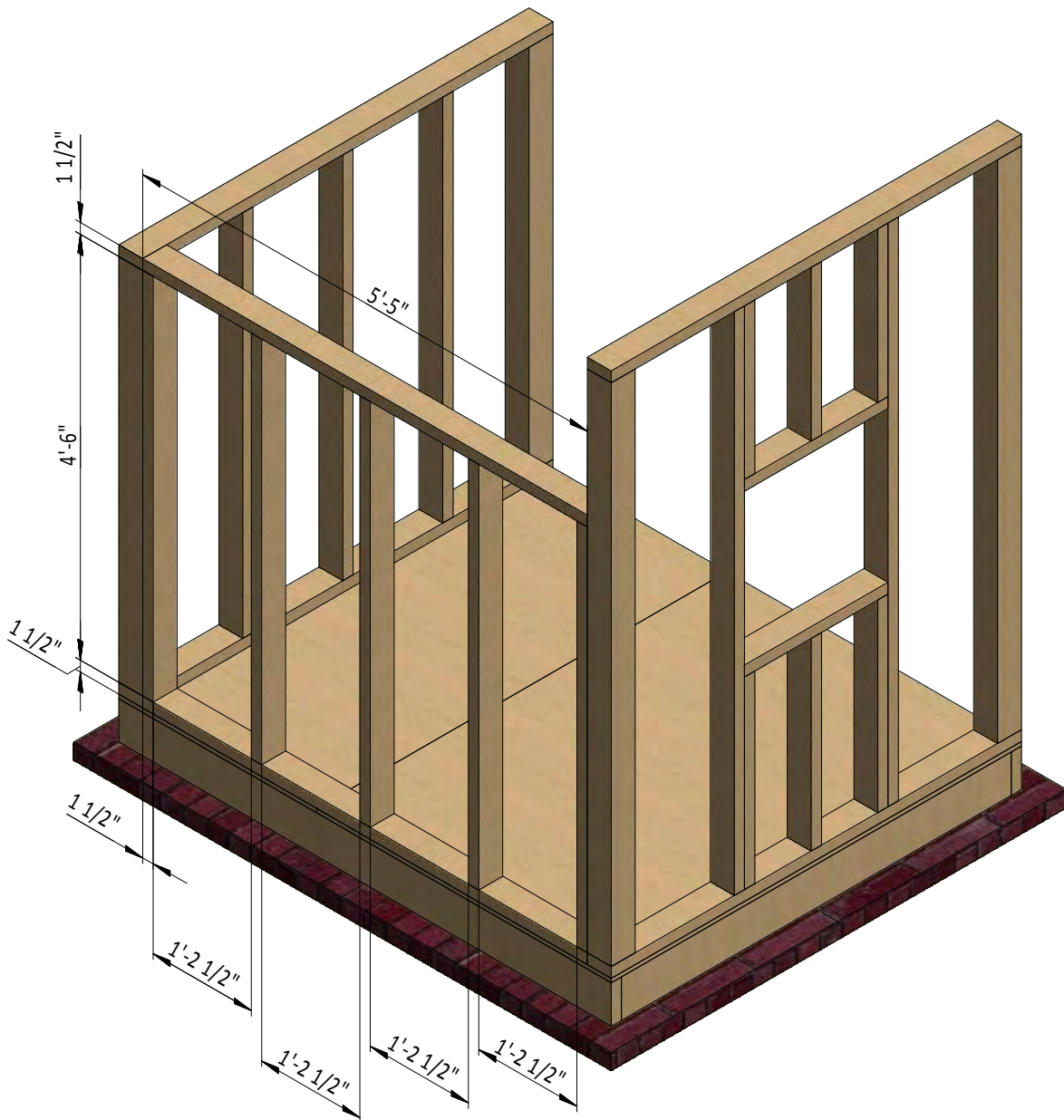
STEP 4

Assemble Back Wall Frame

4.1 Using 1 1/2 " x 3 1/2 " pressure-treated material, construct back wall frame using the drawing below as a reference.

4.2 Connect the beams with 2x4" wood screws.

4.3 Using a speed square or carpenter's square, check the corners to make sure the corners are 90 degrees.



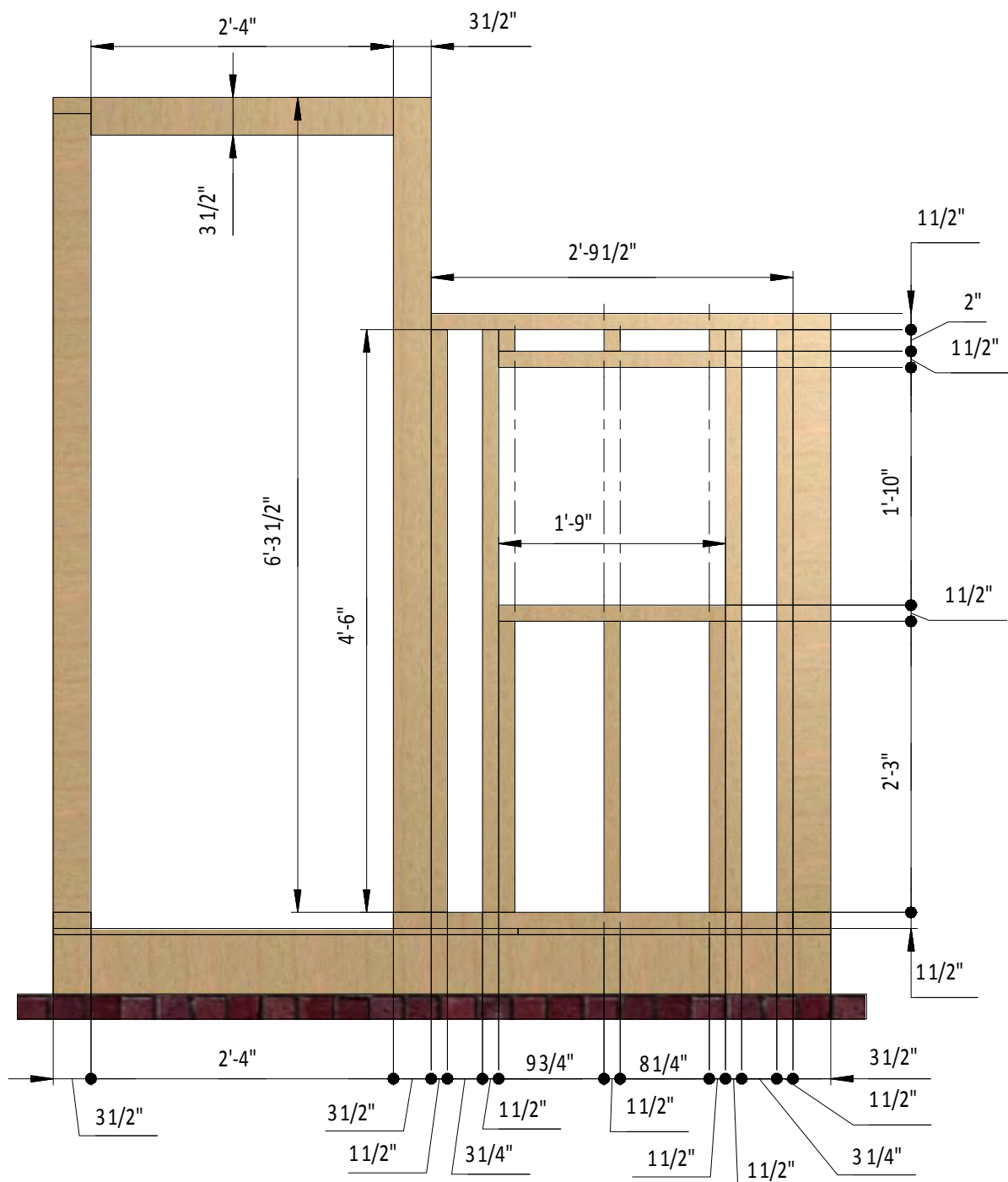
STEP 5

Assemble Front Wall Frame

5.1 Using 1 1/2 " x 3 1/2 " and 3 1/2" x 3 1/2" pressure-treated material, construct right wall frame using the drawing below as a reference.

5.2 Connect the beams with 2x4" and 2x5" wood screws.

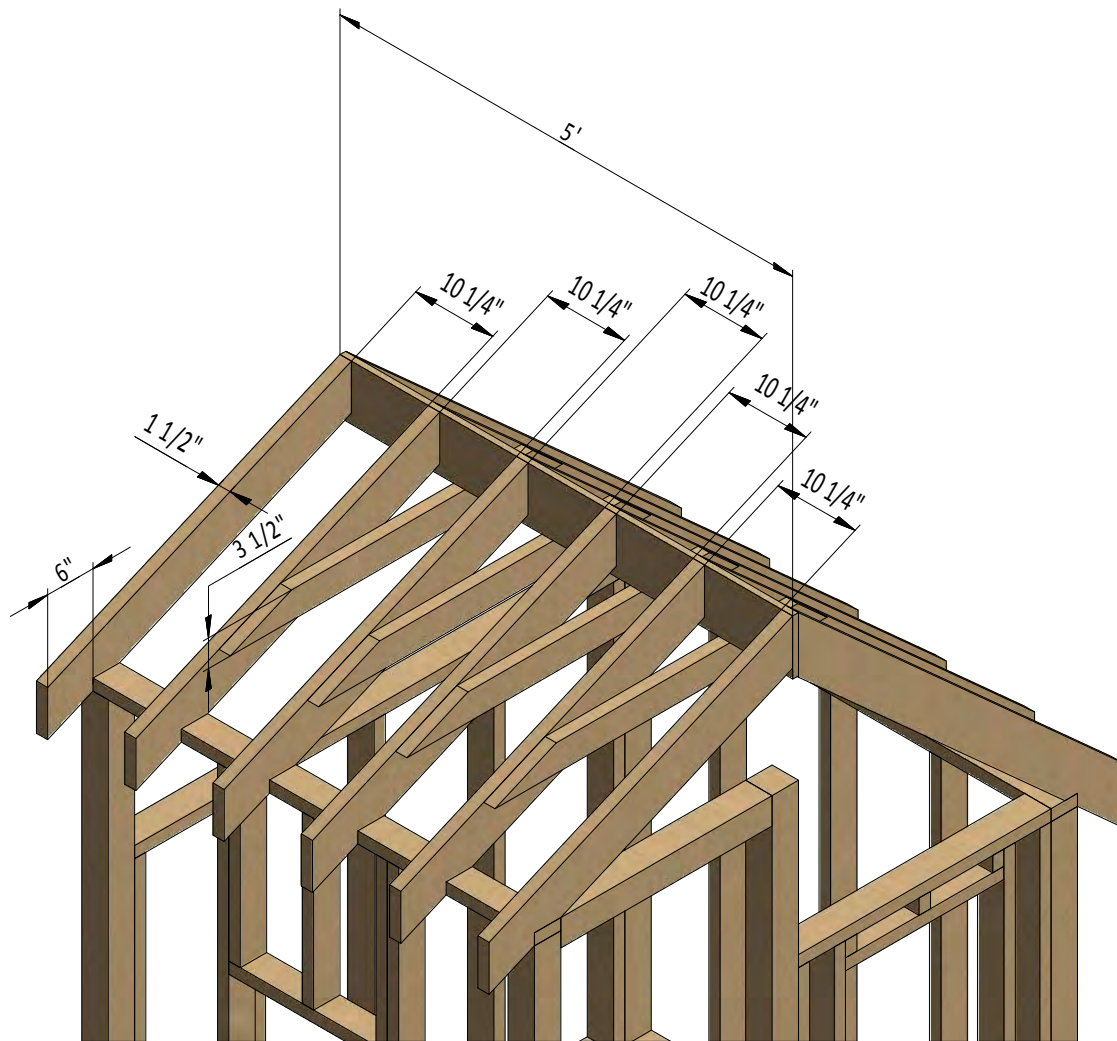
5.3 Using a speed square or carpenter's square, check the corners to make sure the corners are 90 degrees.



STEP 6

Assemble The Roof Frame

- 6.1 Prepare 12 rafters with cross-section $1\frac{1}{2} \times 5\frac{1}{2}$ inch.
- 6.2 Prepare 4 collar ties with cross-section $1\frac{1}{2} \times 3\frac{1}{2}$ inch.
- 6.3 Prepare the ridge board with cross-section $\frac{3}{4} \times 7\frac{1}{4}$ inch.
- 6.4 Connect the beams with 2x3" wood screws.

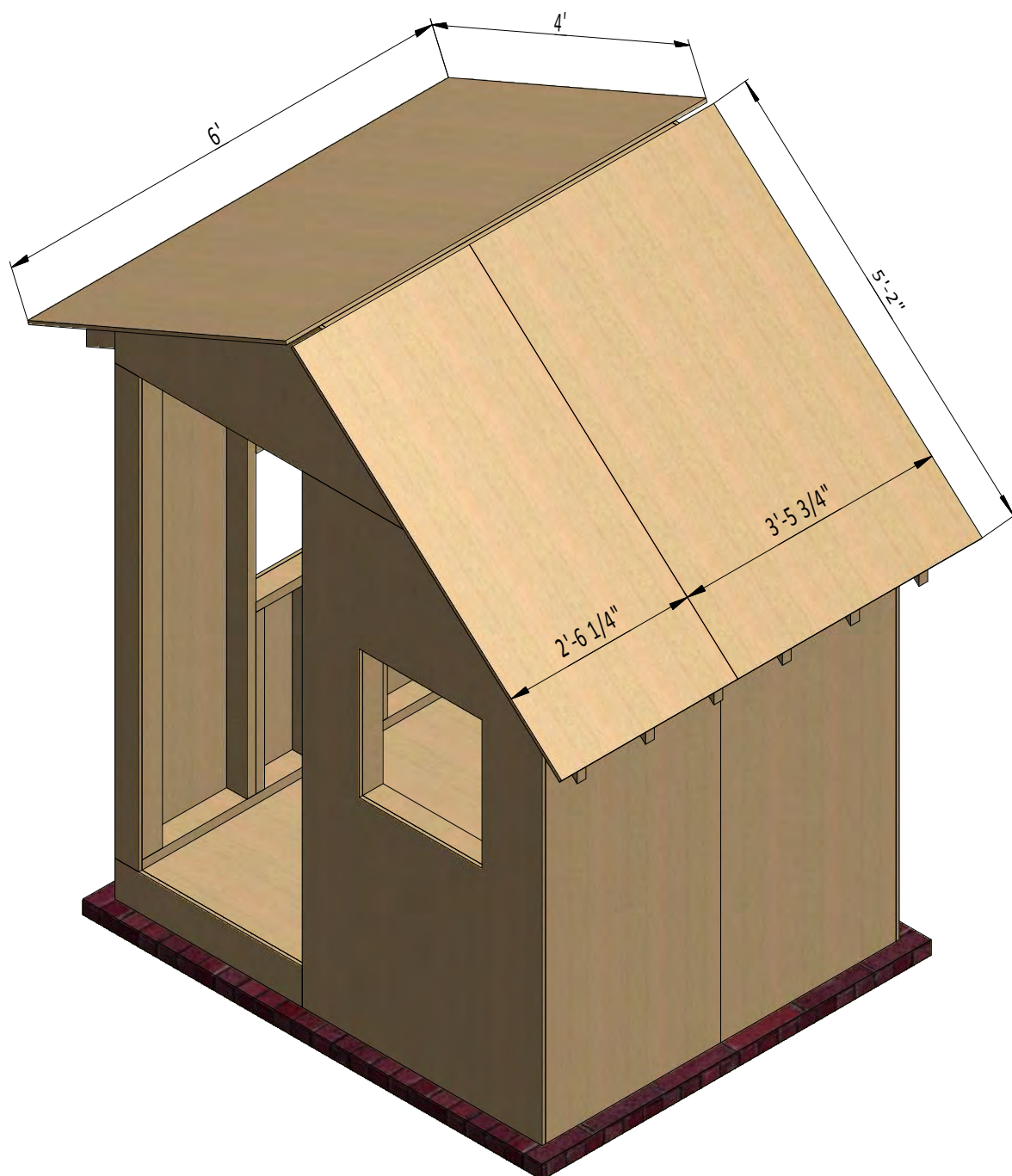


STEP 7

Install Plywood For The Roof

7.1 Cut sheets of 9/16" plywood for sheathing the roof using the drawing below as a guide.

7.2 Secure the plywood with 2" wood screws.



STEP 8

Window Installation for Left and Front Walls

It is necessary to prepare 2 windows.

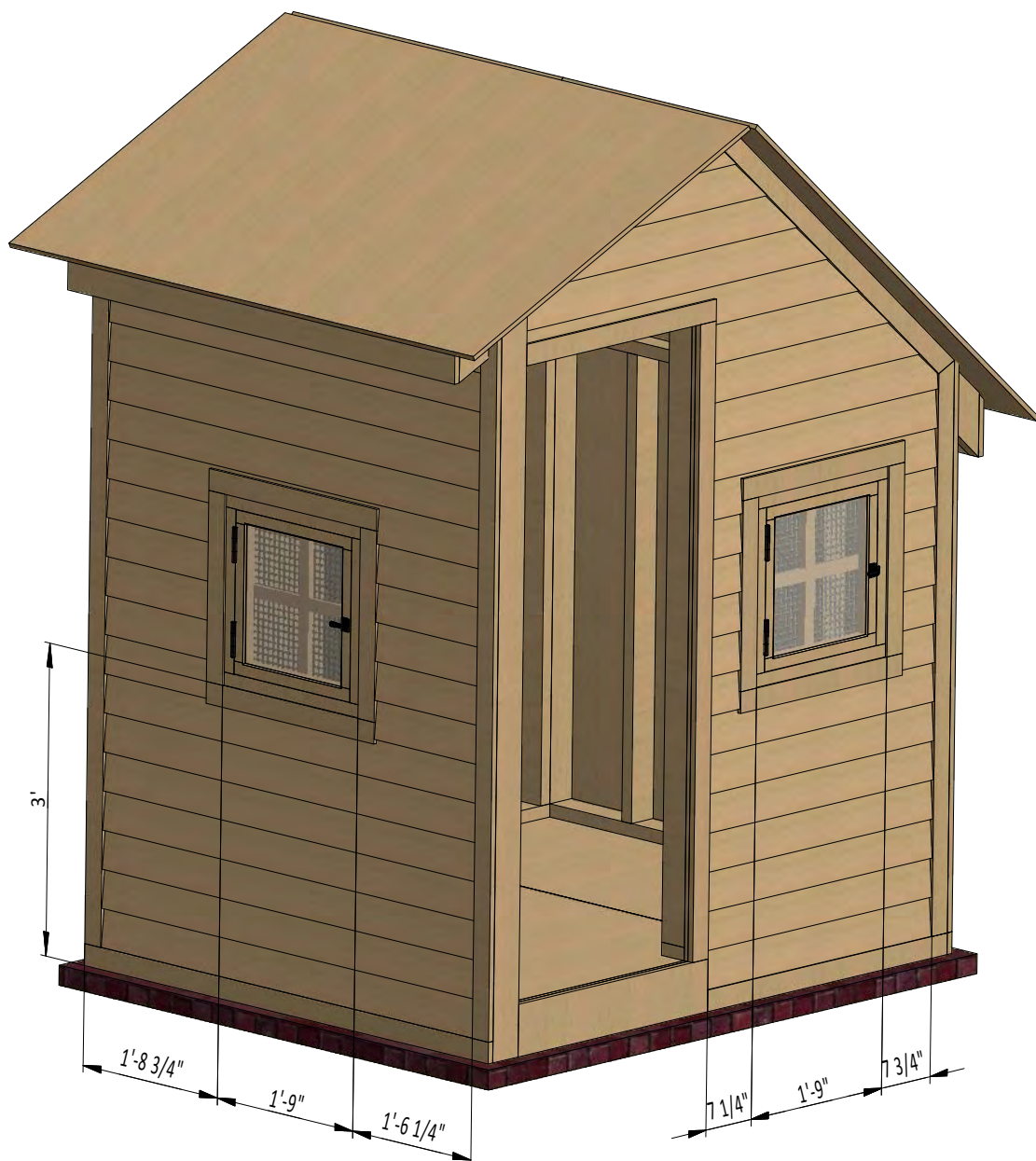
8.1 Using 1 1/2 " x 2 1/2 " pressure-treated material, cut the outer frame for the window as shown in the drawing below. Additionally, add vertical and horizontal supports using 3/4 " x 1 1/2 " material and cut the recesses for the window hinges .

8.2 Prepare 1/4" wire mesh for window according to the dimensions.

8.3 Make the inner frame from the pressure-treated lumber with a cross section 1 1/2 x 1 1/2 inch with 2x3" wood screws. On the inner side, it is necessary to mill the groove for glass. On the outer left side, it is necessary to mill the grooves for hinges.

8.4 Prepare and install glass into inner frame groove and fasten it by window beading from four sides. Use for this 1/2" galvanized nails.

8.5 Install hinges (4") with 3x1" wood screws and assemble the window.



STEP 9

Assemble and Install Coop Door

9.1 Assemble the frame from the pressure-treated lumber with cross section $2\frac{1}{2} \times 1\frac{1}{2}$ " with 2x5" wood screws according to the drawing.

9.2 Install door trims from the pressure-treated lumber with cross section $1\frac{1}{2} \times \frac{3}{4}$ " with 2" wood screws according to the drawing.

9.3 Prepare and install starter courser from the pressure-treated lumber with cross section $\frac{1}{4} \times \frac{3}{4}$ inch.

9.4 Prepare the $\frac{1}{2} \times 6$ inch wood siding boards in the required amount according to the drawing.

9.5 Assemble siding shields with 2" galvanized nails.

9.6 Install three 6" door hinges using 2x1" wood screws. Finish the door installation by attaching 4" surface bolt and 6" door pull (see nodes **O**, **P**).



STEP 10

Installing Corrugated Roofing

10.1 To cover the roof will need 60 ft² of corrugated roof panel.

10.2 Fasten the panels with 1 1/2" sheet metal screw with neoprene washer.

10.3 Prepare and install metal roof ridge caps according to the drawing.



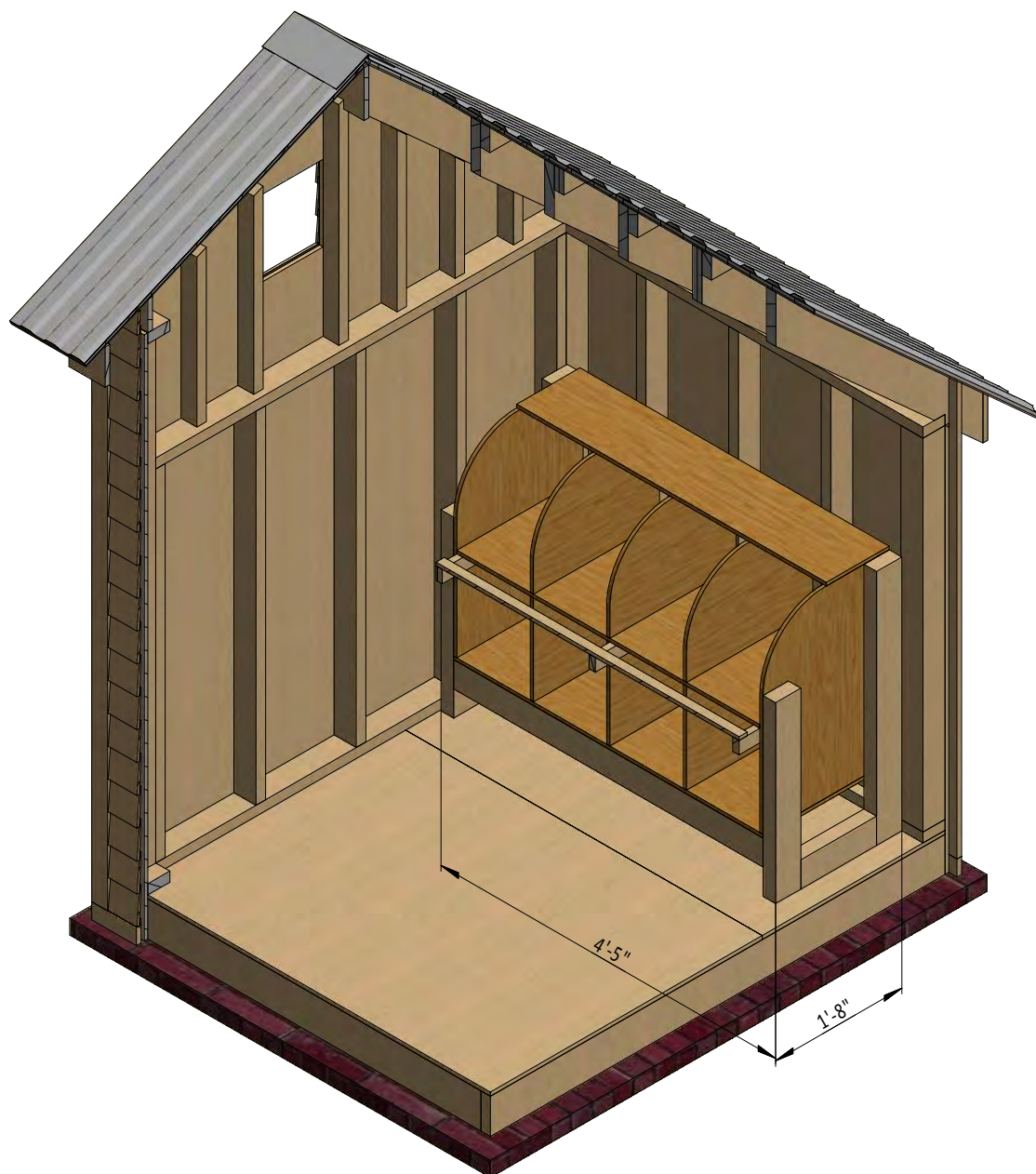
STEP 11

Nesting Box Assembly

11.1 Use 1 1/2 " x 3 1/2" and 3/4 " x 3 1/2 " pressure-treated material for building the nesting boxes and secure with 4" and 5" wood screws.

11.2 Prepare the 1/2" plywood for horizontal and vertical walls and install them with 2" wood screws.

11.3 Provide and install nest's roost from the pressure-treated lumber with cross section 3/4 x 1 1/2 and 1 1/2 x 1/2 inch with 2x2" wood screws.



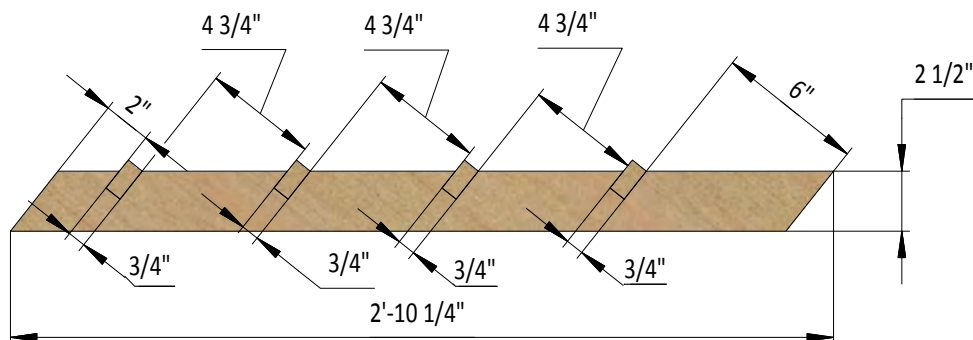
STEP 12

Coop's Roost Assembly

12.1 Assemble the roost from the pressure-treated lumber with cross section $2\frac{1}{2} \times \frac{3}{4}$ " with 2x2" wood screws according to the drawing.

12.2 Fasten the stairs to the walls inside the coop with 4x2" wood screws.

12.3 Fasten the roost's corner to the rafter with the pressure-treated lumber with cross section $1\frac{1}{2} \times 1\frac{1}{2}$ " with 2x3" wood screws.



STEP 13

Final Touches

Now that your chicken coop is all done, you are ready to decorate it any way you want using your favorite paint, stain, or preservative.



Free vs. Premium Plan: What's the Difference?

We offer both free and premium versions of our detailed shed plans, designed to fit your needs and budget. Check out the table below to see the key differences and choose the plan that's right for you:

Features	Free Plan	Premium Plan
Steps Count	13	23
Illustrations per Step	Limited	Every Step
Print Ready Format	X	✓
Step-by-Step Instructions	Basic	Comprehensive
Full Materials & Cutting List	X	✓
Additional Illustrations	X	✓
Additional Blueprints	X	✓
Tools List	X	✓
Fastening Elements List	X	✓
Technical Support	X	✓

[Try Premium Risk-Free](#)

60-day refund policy with no questions asked.



For more great **HOW-TO** plans please visit: <https://craft.camp>

Copyright

The text and illustrations that appear here are the exclusive property of craft.camp and are protected by federal copyright laws. The duplication, sale or distribution of any portion of these plans without prior written consent from the original designer will be subject to the appropriate penalties for copyright infringement. Sharing this plan on the web is only permitted with an indicated original source: <https://craft.camp>