

10'x16' Greenhouse Plan

Free vs. Premium Plan: What's the Difference?

We offer both free and premium versions of our detailed shed plans, designed to fit your needs and budget. Check out the table below to see the key differences and choose the plan that's right for you:

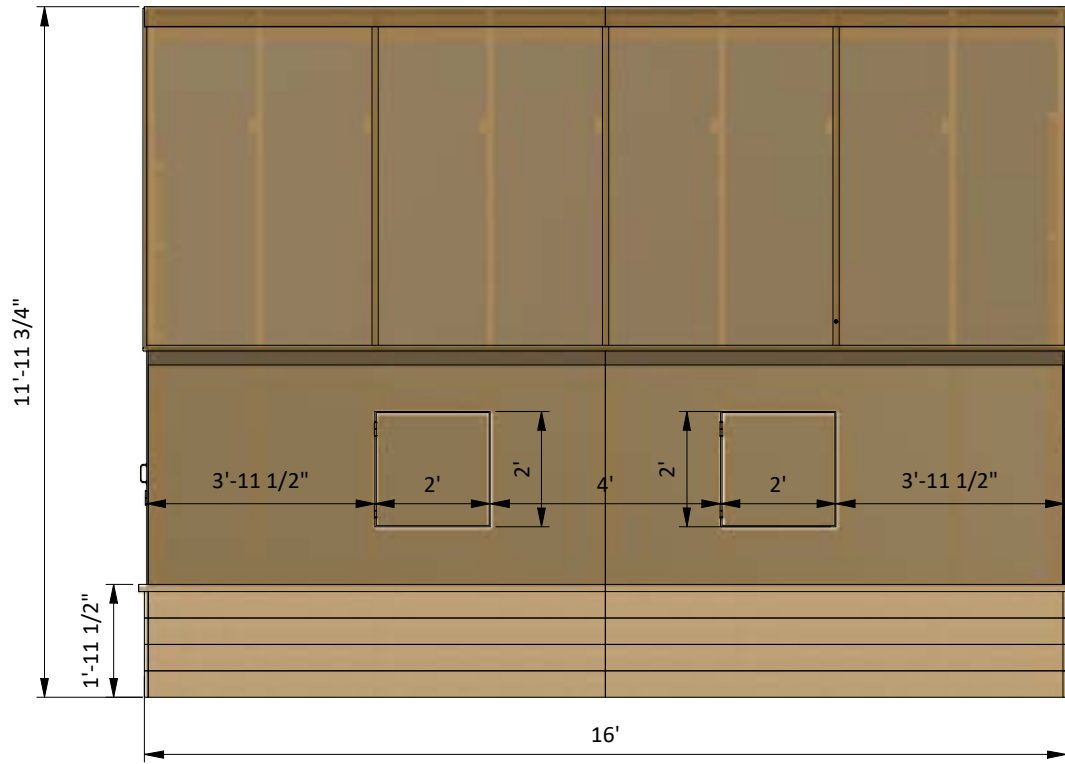
Features	Free Plan	Premium Plan
Steps Count	10	20
Illustrations per Step	Limited	Every Step
Print Ready Format	X	✓
Step-by-Step Instructions	Basic	Comprehensive
Full Materials & Cutting List	X	✓
Additional Illustrations	X	✓
Additional Blueprints	X	✓
Tools List	X	✓
Fastening Elements List	X	✓
Technical Support	X	✓

Try Premium Risk-Free

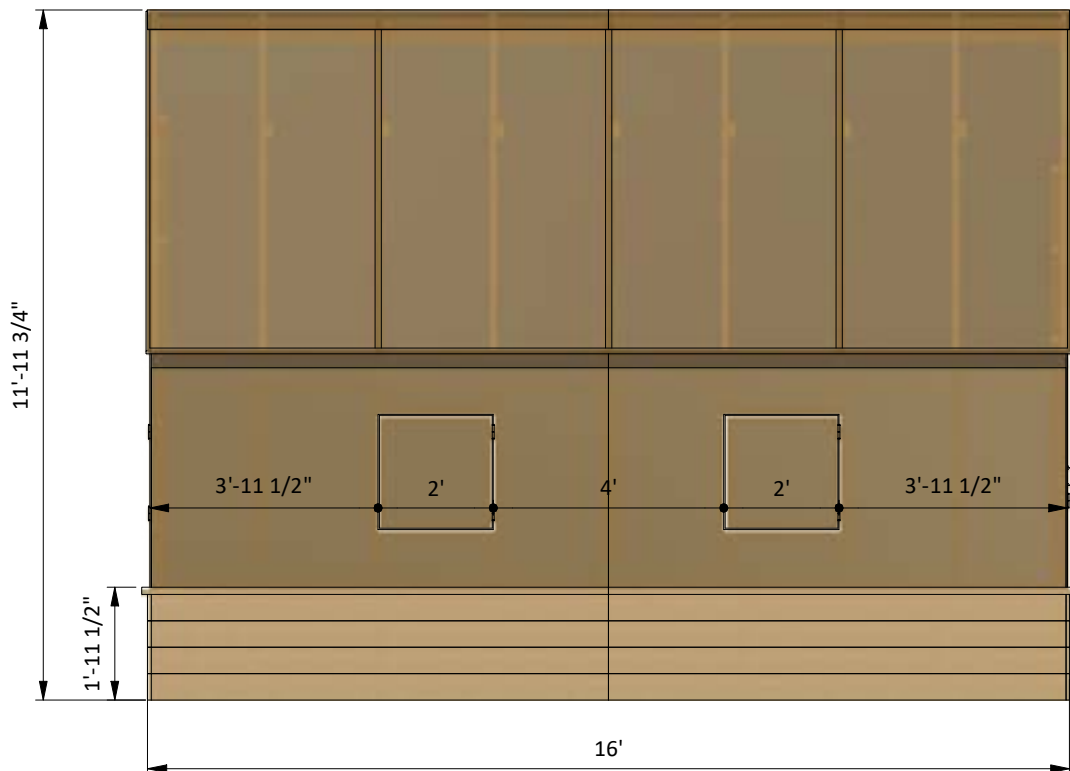
30-day refund policy with no questions asked.

Size & Dimensions

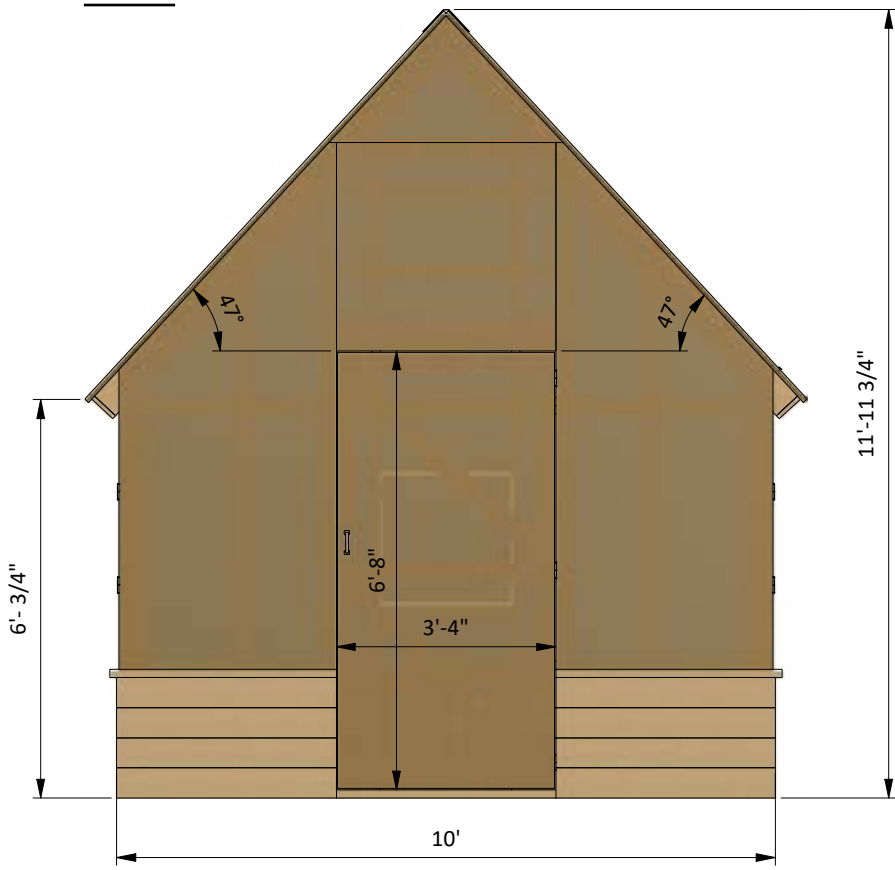
right



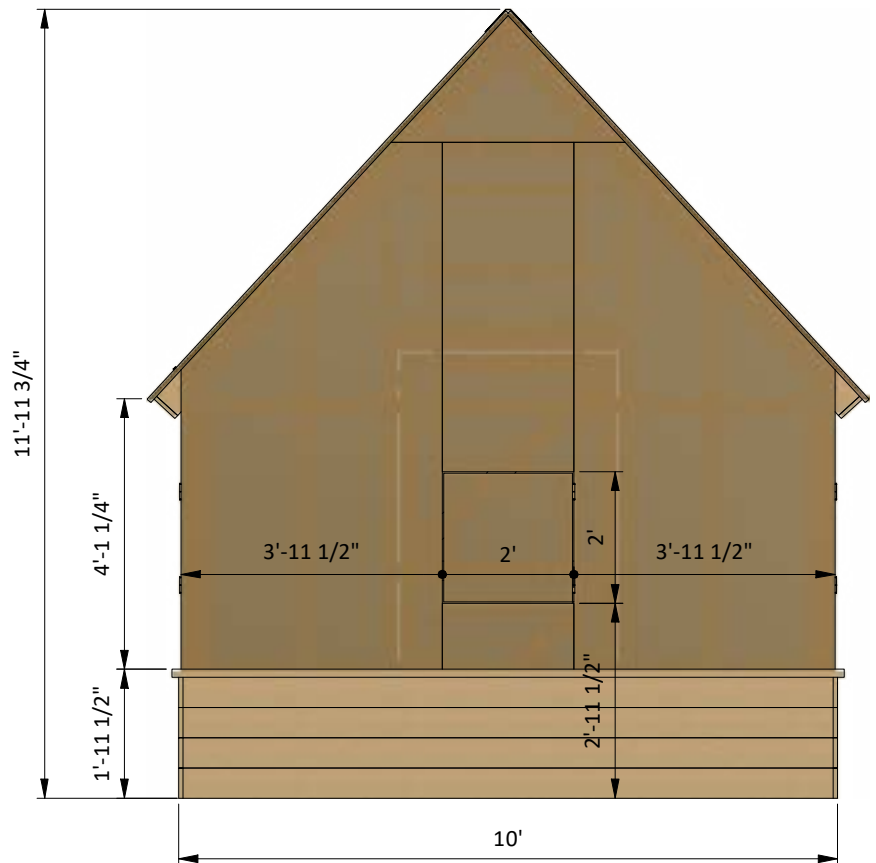
left



front



back



Interior view



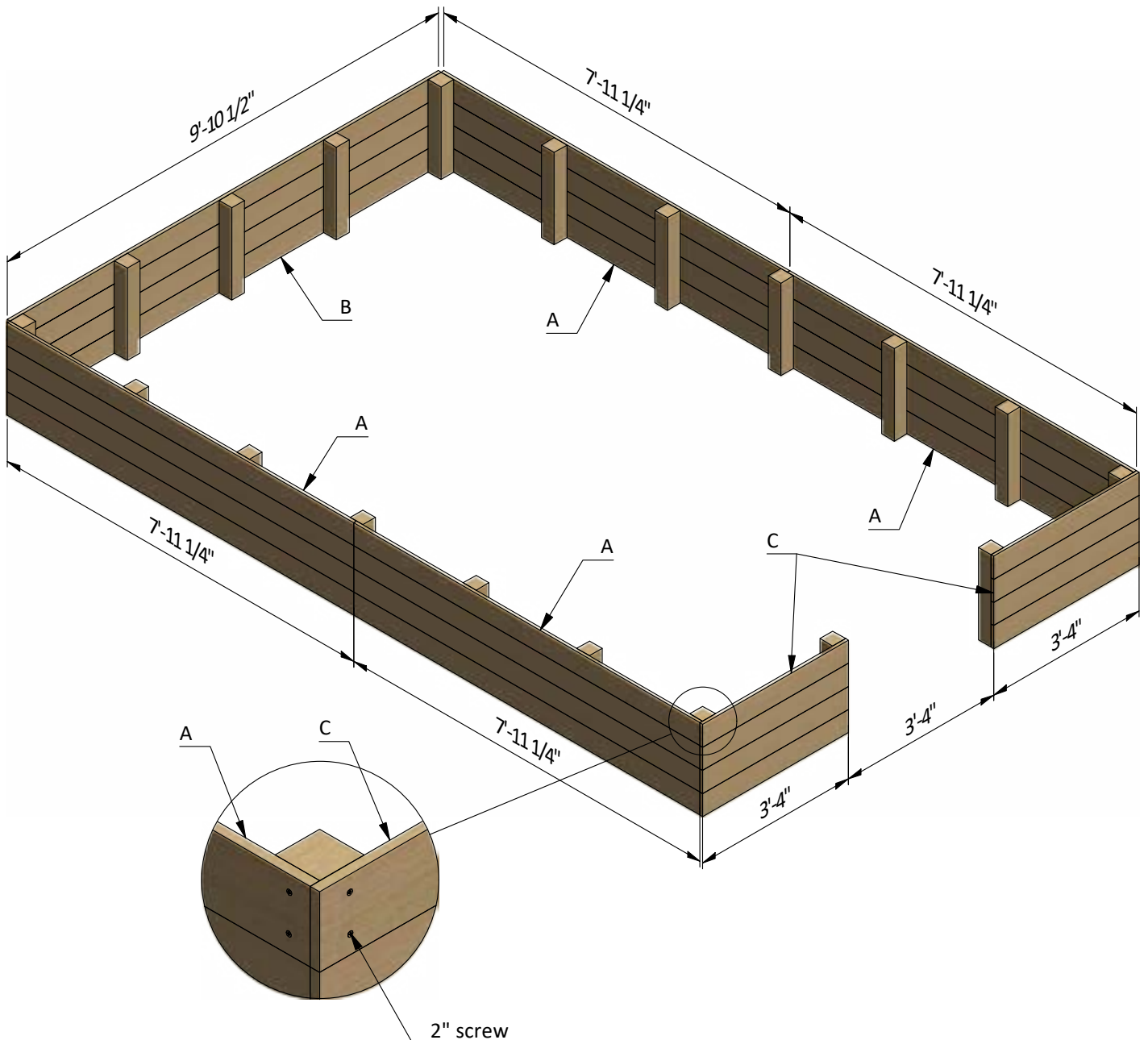
STEP 2

Installing the Exterior Siding Boards

2.1 Use 1 x 6 pressure-treated lumber to cut and install the bottom siding. Use the illustration below as a reference. You will need sixteen boards cut to 7'-11 1/4", four boards cut to 9'-10 1/2" and eight boards cut to 3'-4".

2.2 Secure the beams with 2" wood screws.

Pos	Description	Material	Dimension	Qty
A	Siding board	1x6	7'-11 1/4"	16
B	Siding board	1x6	9'-10 1/2"	4
C	Siding board	1x6	3'-4"	8



STEP 3

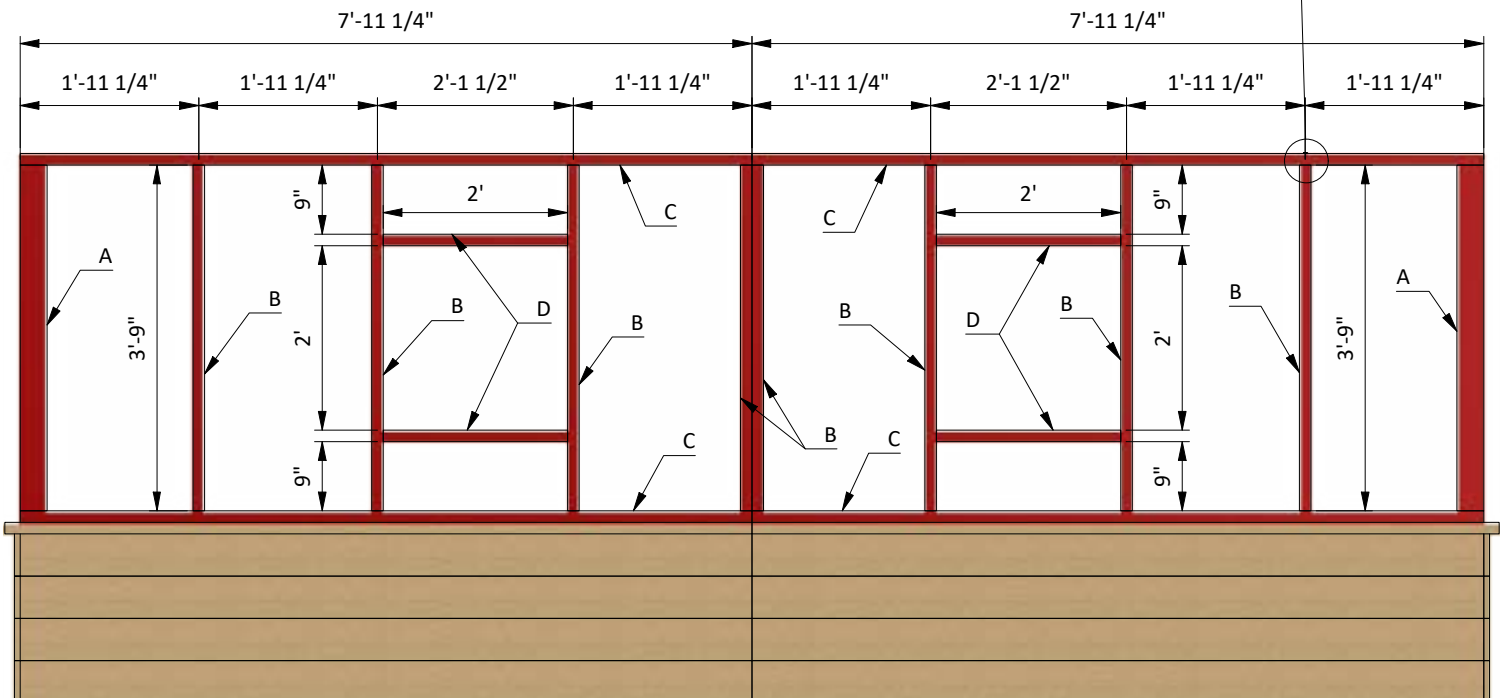
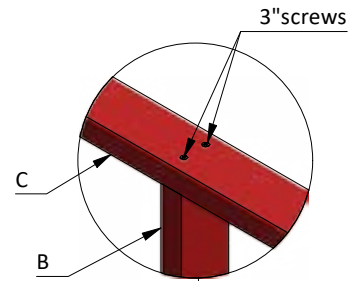
Assemble Side Wall Frames

3.1 Using 2 x 4 and 4 x 4 pressure-treated lumber, construct side wall frames using the drawing below as a reference. For each wall you will need ten boards cut to 3'-9" that will be studs, four boards cut to 7'-11 1/4" that will be top and bottom beams and four boards cut to 2' that will be the window header and rough sill.

3.2 Connect the beams with 3" wood screws.

3.3 Using a speed square or carpenter's square, check the corners to make sure they are 90°.

Pos	Description	Material	Dimension	Qty
A	Stud	4x4	3'-9"	4
B	Stud	2x4	3'-9"	16
C	Top/bottom beam	2x4	7'-11 1/4"	8
D	Window header/ rough sill	2x4	2'	8



STEP 4

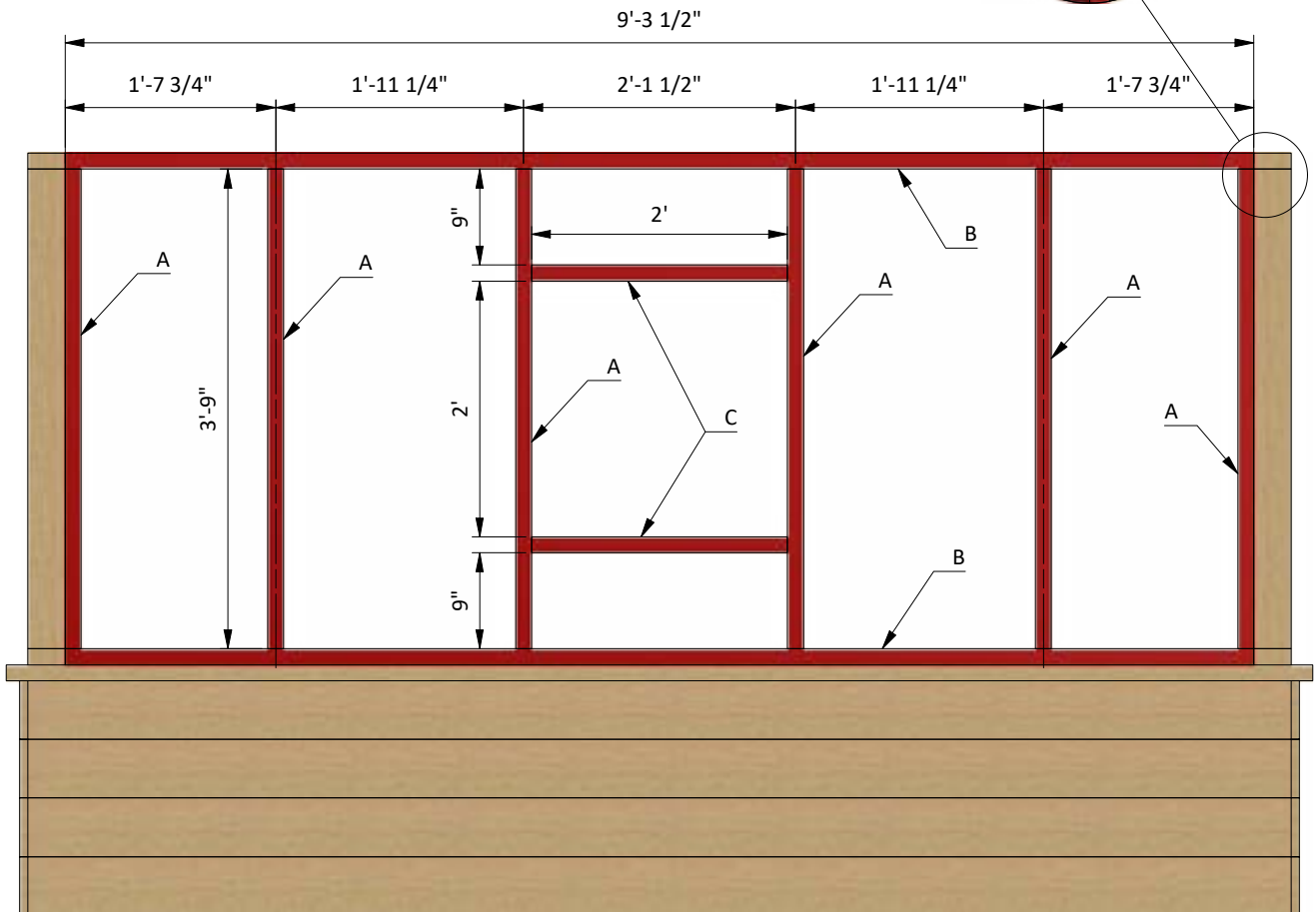
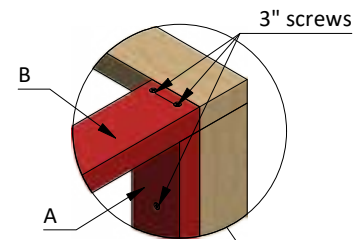
Assemble Back Wall Frame

4.1 Using 2 x 4 pressure-treated lumber, construct back wall frame using the drawing below as a reference. You will need six boards cut to 3'-9" that will be studs, two boards cut to 9'-3 1/2" that will be top and bottom beams and two boards cut to 2' that will be the window header and rough sill.

4.2 Connect the beams with 3" wood screws.

4.3 Using a speed square or carpenter's square, check the corners to make sure they are 90°.

Pos	Description	Material	Dimension	Qty
A	Stud	2x4	3'-9"	6
B	Top/bottom beam	2x4	9'-3 1/2"	2
C	Window header/ rough sill	2x4	2'	2



STEP 5

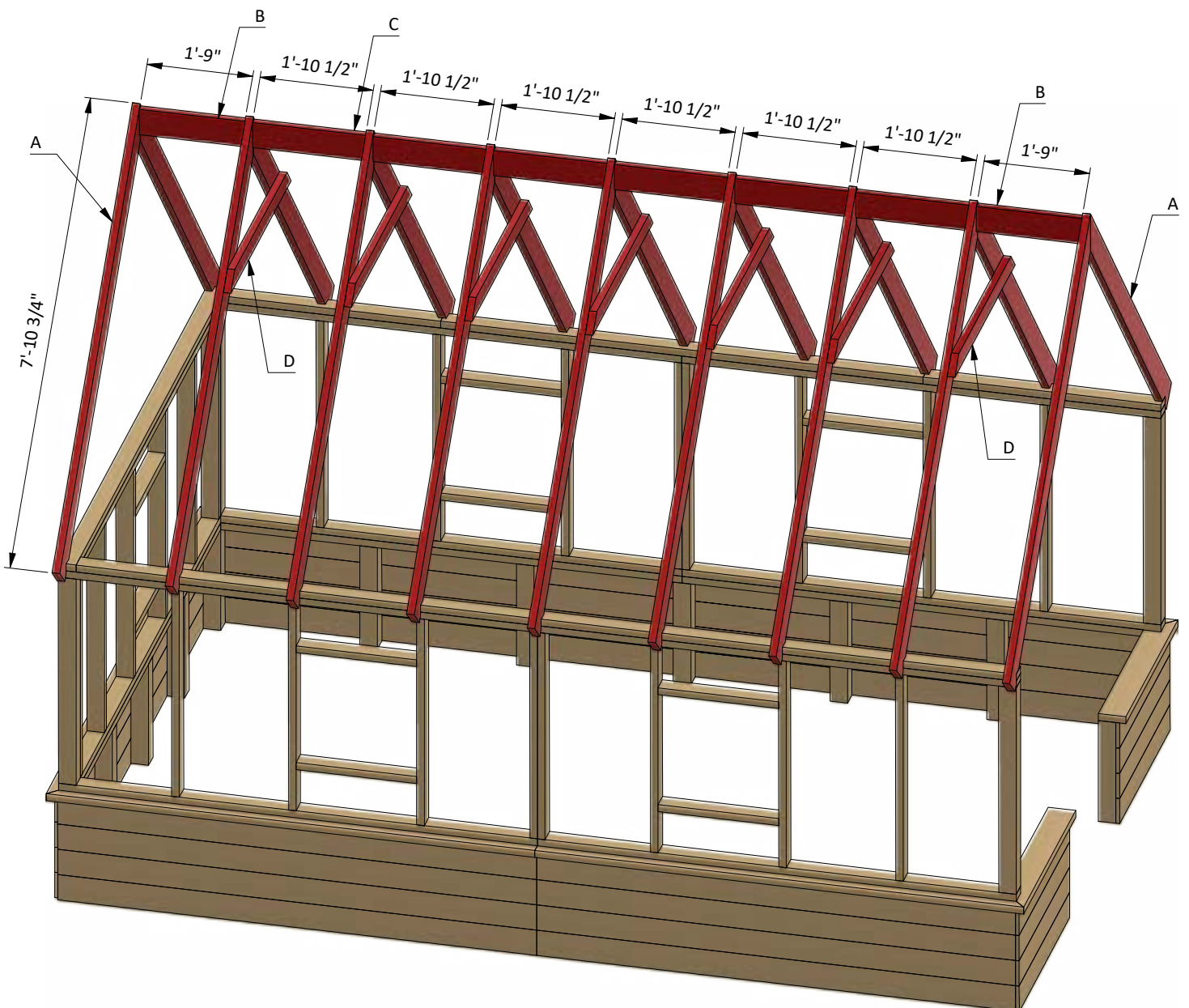
Assemble the Roof Frame

5.1 Using 2 x 6 pressure-treated lumber, cut eighteen rafters 7'-10 3/4" long according to the dimensions in drawings below.

5.2 Using 2 x 4 pressure-treated lumber, cut seven collar ties 4' long according to the dimensions in drawings below.

5.3 Using 2 x 6 pressure-treated board cut two boards 1'-9" long and six boards cut to 1'-10 1/2" long that will be ridge boards according the illustration below.

5.4 Connect the beams with 3" and 5" wood screws.



STEP 6

Assemble and Install Windows

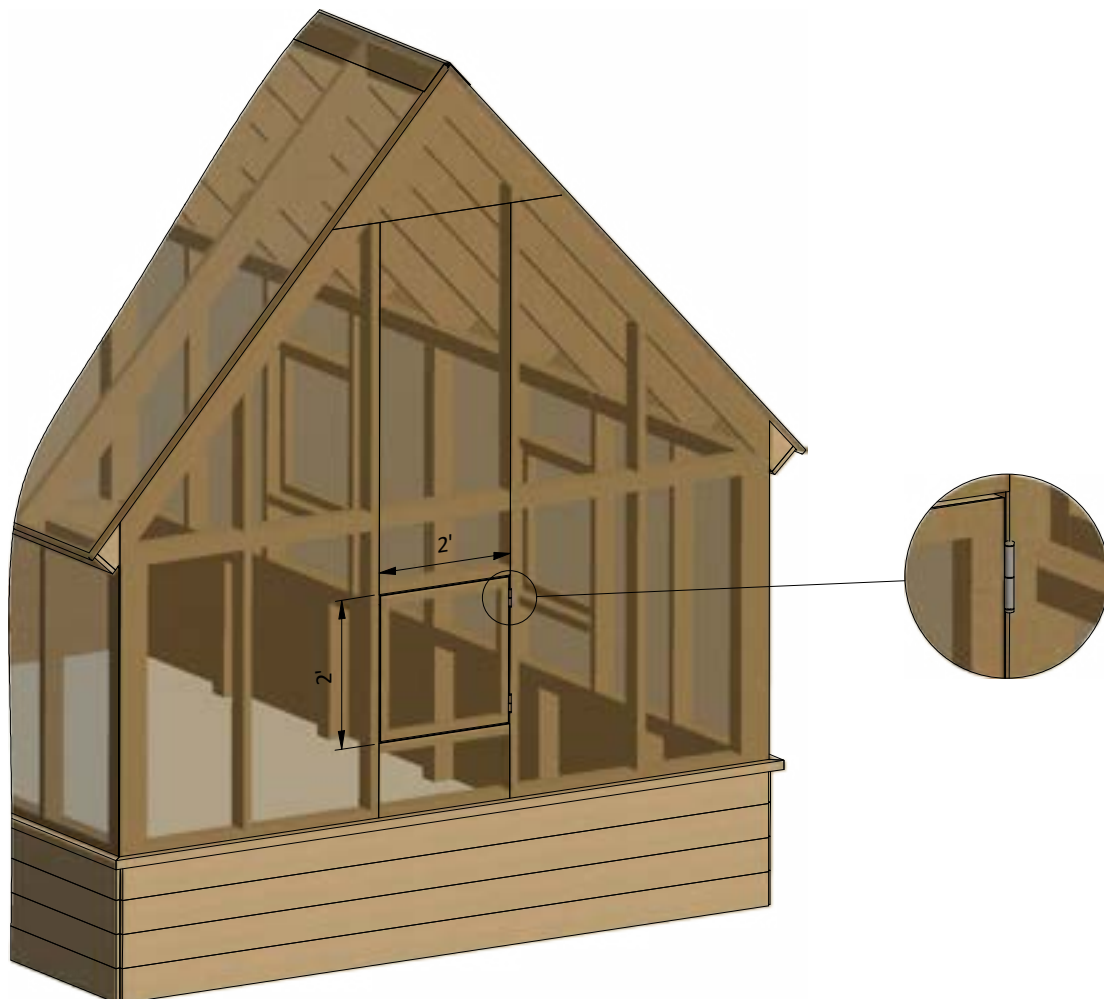
You will need to prepare three windows.

6.1 Using 2 x 2 pressure-treated lumber, assemble the frame for the window as shown in the drawing below. For each window you will need four boards cut to 1'-11 1/2" that will be the vertical and horizontal girts. Cut the recesses in each beam for splicing connection.

6.2 Prepare and install 1'-11 1/2" x 1'-11 1/2" polycarbonate sheet and fasten it by 1" zinc-plated galvanized steel hex screws.

6.3 Insert window into wall openings and fix it with two 2" hinges to the wall studs. Finish the door installation by attaching 6" pull.

Pos	Description	Material	Dimension	Qty
A	Girt	2x2	1'-11 1/2"	12
B	Window plane	0.3125" Polycarbonate	1'-11 1/2" x 1'-11 1/2"	3



STEP 7

Assemble and Install Front Door

7.1 Build the door frame using 2 x 4 pressure-treated lumber.

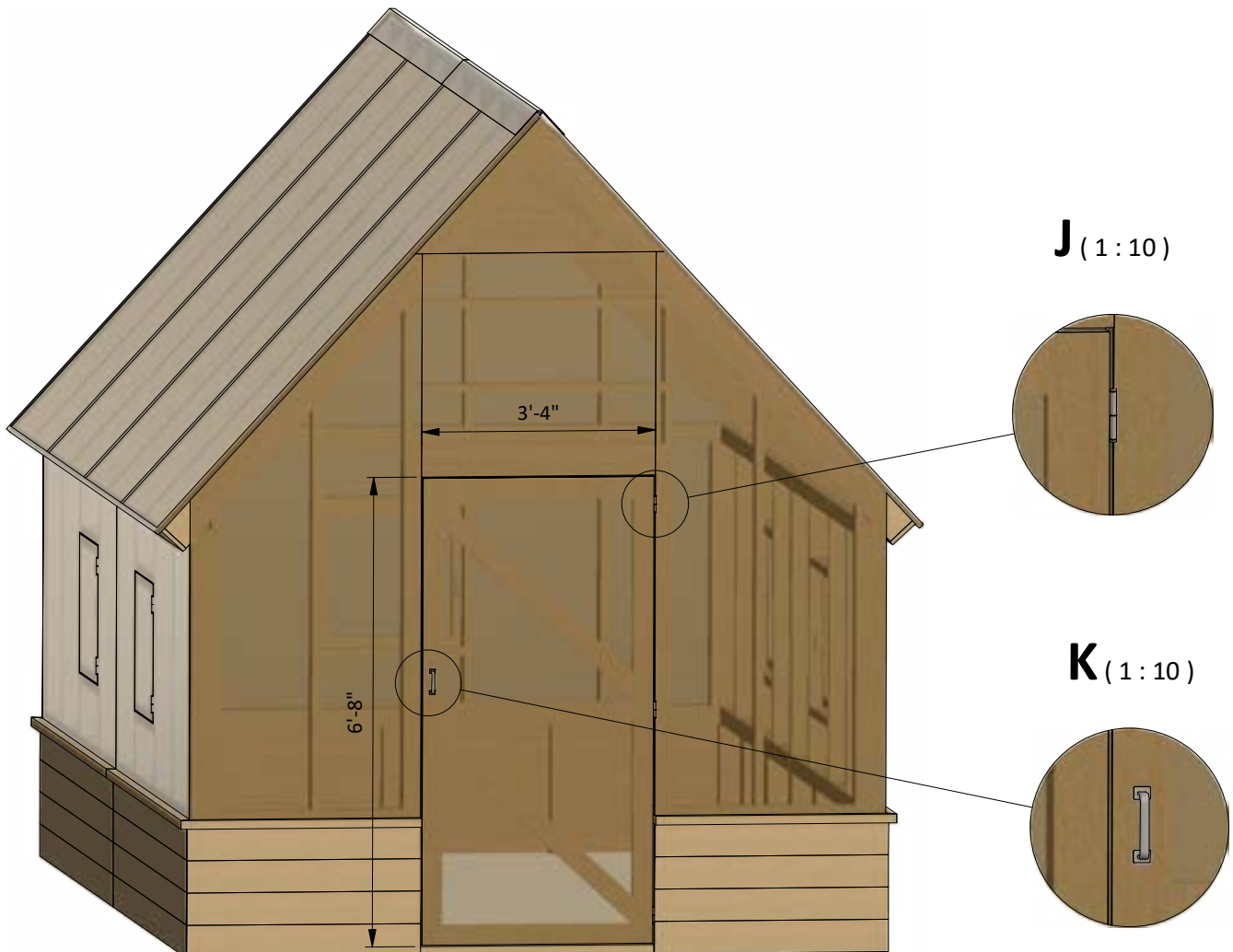
You will need two boards cut to 6'-7 1/2" that will be the vertical girts, three boards cut to 2'-8 1/2" that will be the horizontal girts and two boards cut to 3'-11 1/4" that will be cross braces.

7.2 Prepare the 0.3125" polycarbonate sheet with dimensions 3'-3 1/2" x 6'-7 1/2" for the door according to the drawing.

7.3 Install two 3" door hinges using 6x1" wood screws.

Finish the door installation by attaching 6" door pull (see nodes **J**, **K**).

Pos	Description	Material	Dimension	Qty
A	Girt	2x4	6'-7 1/2"	2
B	Girt	2x4	2'-8 1/2"	3
C	Cross brace	2x4	3'-11 1/4"	2
D	Door plane	0.3125" Polycarbonate	3'-3 1/2" x 6'-7 1/2"	1



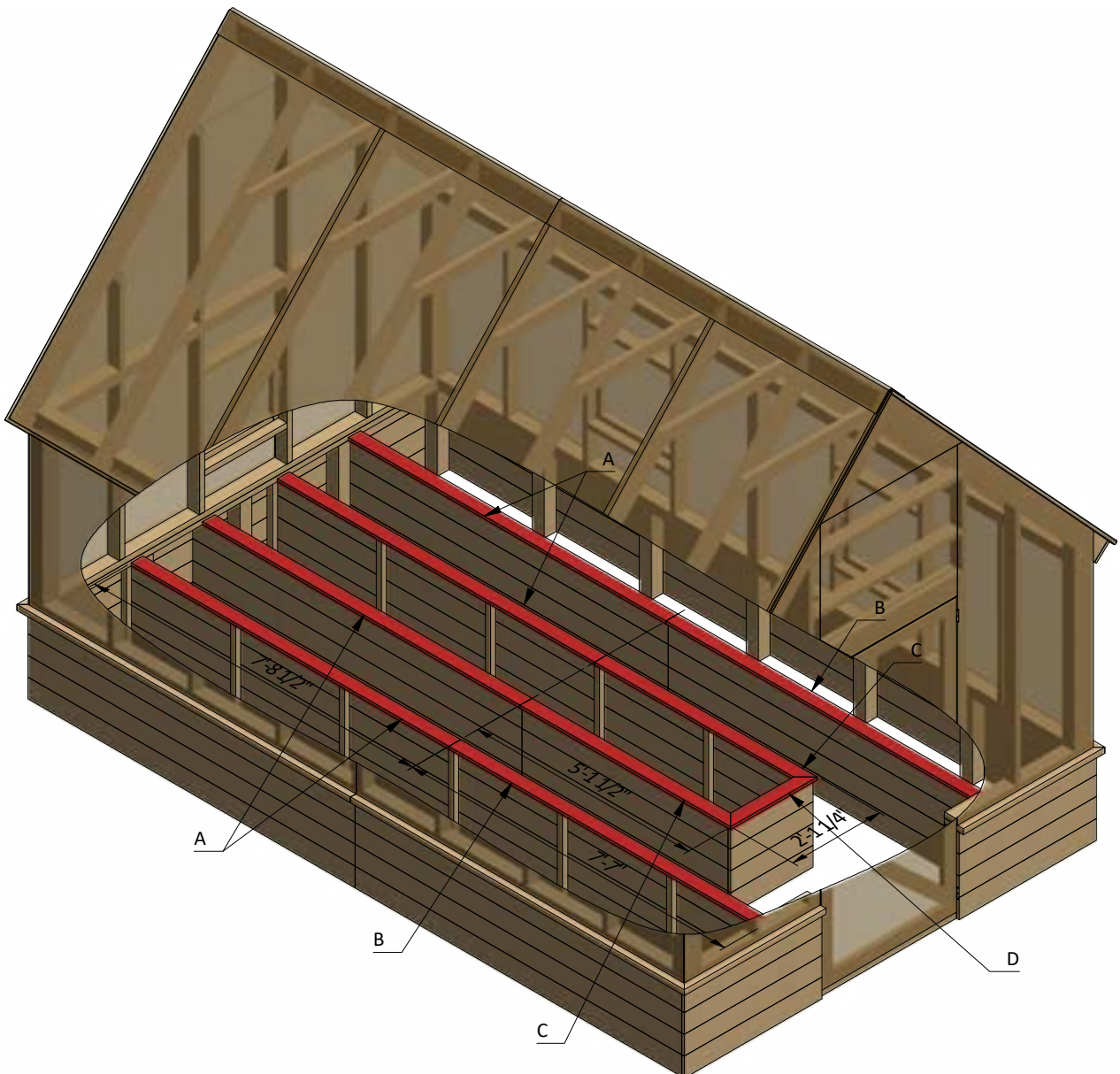
STEP 8

Assemble Garden Bed's Top Frame

8.1 Build the garden bed's walls using 1 x 4 pressure-treated lumber and secure with 2" wood screws to the studs. You will need four boards cut to 7'-8 1/2", two boards cut to 7'-7", two boards cut to 5'-1 1/2" and one board cut to 2'-1 1/4".

8.2 Fill the entire volume with earth.

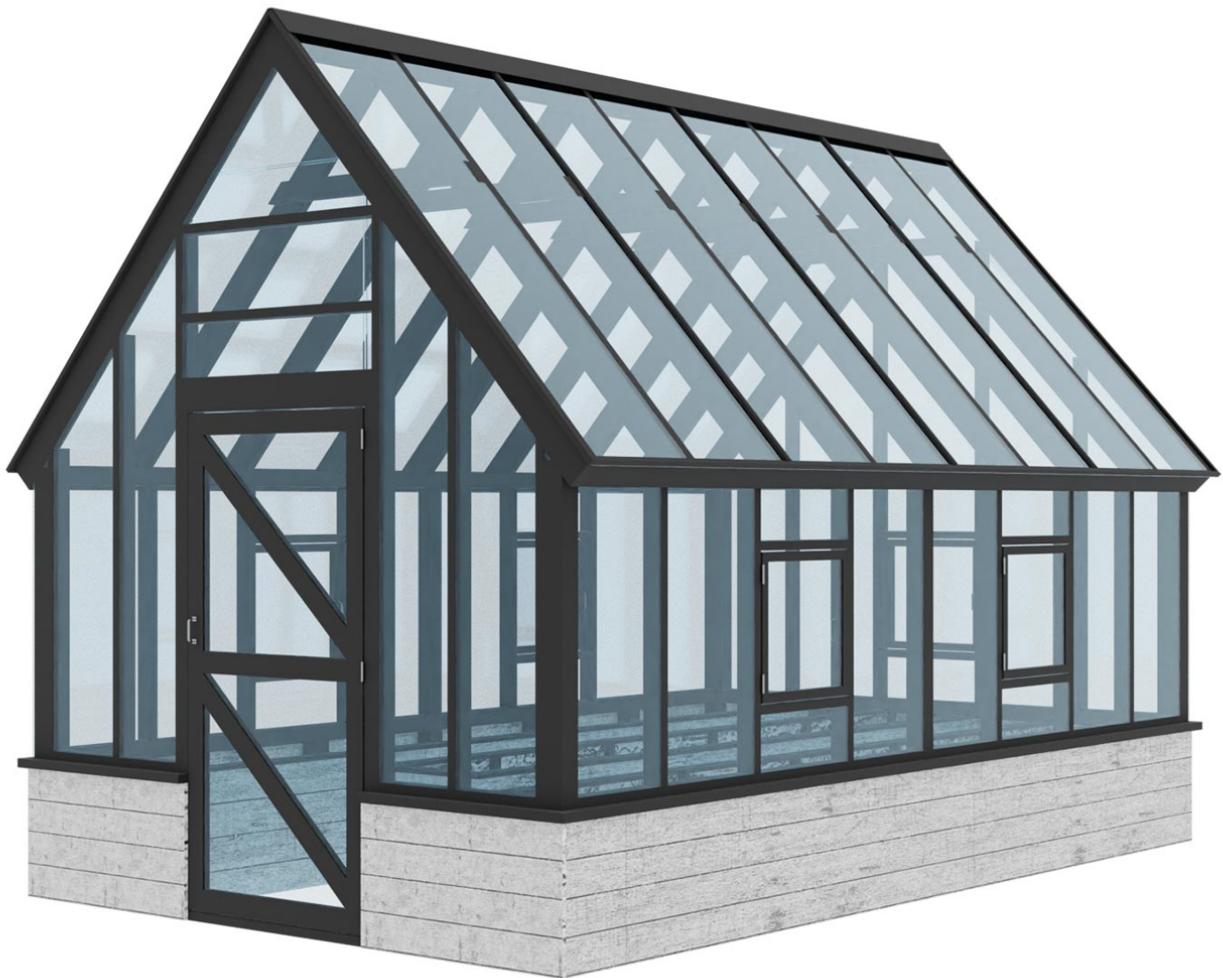
Pos	Description	Material	Dimension	Qty
A	Top beam	1x4	7'-8 1/2"	4
B	Top beam	1x4	7'-7"	8
C	Top beam	1x4	5'-1 1/2"	8
D	Top beam	1x4	2'-1 1/4"	4



STEP 9

Final touches

Now that your greenhouse is all done, you are ready to plant your favorite seedlings for organic, natural vegetables.



Get Support

If you have any questions or want to share the feedback, please do not hesitate contacting us:<https://craft.camp/support/>

Free vs. Premium Plan: What's the Difference?

We offer both free and premium versions of our detailed shed plans, designed to fit your needs and budget. Check out the table below to see the key differences and choose the plan that's right for you:

Features	Free Plan	Premium Plan
Steps Count	10	20
Illustrations per Step	Limited	Every Step
Print Ready Format	X	✓
Step-by-Step Instructions	Basic	Comprehensive
Full Materials & Cutting List	X	✓
Additional Illustrations	X	✓
Additional Blueprints	X	✓
Tools List	X	✓
Fastening Elements List	X	✓
Technical Support	X	✓

Try Premium Risk-Free

30-day refund policy with no questions asked.



For more great **HOW-TO** plans please visit: <https://craft.camp>

Copyright

The text and illustrations that appear here are the exclusive property of craft.camp and are protected by federal copyright laws. The duplication, sale or distribution of any portion of these plans without prior written consent from the original designer will be subject to the appropriate penalties for copyright infringement. Sharing this plan on the web is only permitted with an indicated original source: <https://craft.camp>